

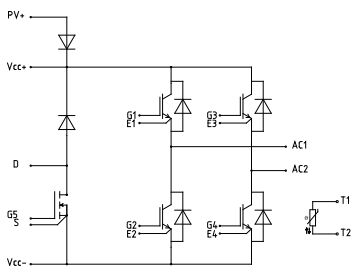
Product Brief

Modules

for Photovoltaic String and Multi-String Inverters

We introduce an all-new family of tailor-made modules for photovoltaic (PV) string and multi-string inverters. Now, optimised inverters offering optimized inverter efficiency and performance. Fast and solderless assembly is possible using the proven PressFIT technology. Reliability at the highest level was a clear focus during development. Solutions are available for single-phase and three-phase photovoltaic inverters.

Single-phase Photovoltaic Modules



Key features

- > Modular solution tailored for most inverter designs
- > Excellent efficiency and performance
- > High max. DC voltages achievable
- > Wide input voltage range, as boosters are included
- > Reactive power capability is supported
- > Simple assembly due to PressFIT pins (solderable)

Applications

- > Single-phase photovoltaic inverters
- > Three-phase photovoltaic inverters

An entire PV inverter can be realized by using a single Easy 2B module. The modules incorporate an H bridge as well as a booster and a bypass diode. These modules are suitable for PV inverters with:

- > High max. DC voltages, as 650V chips are used
- > Wide input voltage range, as a booster is included
- > Efficiency: approx. 97%
- > Reactive power capability

Advantages:

- > Excellent price/performance ratio
- > Single standard topology
- > Same mechanical layout for 50 A and 75 A module
- > 650 V IGBTs/diodes/MOSFET/SiC Schottky diode



Sales name	Sales product number	Package	Description
F4-50R07W2H3_B51	SP000908430	Easy2B PressFIT	Integrated Booster / Inverter Module (1-4 kVA)
F4-75R07W2H3_B51	SP000908422	Easy2B PressFIT	Integrated Booster / Inverter Module (3-8 kVA)

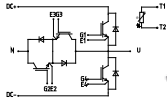


Three-phase photovoltaic modules

Booster modules and converter modules are available. These modules are suitable for PV inverters with:

- > Max. DC input voltage: 1000 V
- > Max. efficiency: 98 % + x
- > Output power up to: 50 kVA

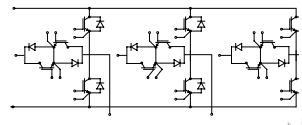
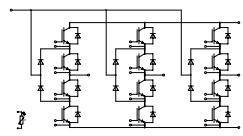
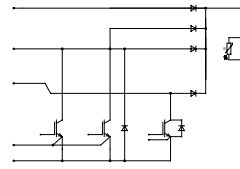
Inverter modules



Advantages:

- > Excellent efficiency and performance
- > Reactive power capability of PV inverter is supported
- > Phase leg module for applications up to 50 kVA

Booster modules



Advantages:

- > Excellent efficiency and performance
- > Reactive power capability
- > Fully integrated module for 3-phase applications up to 9 kVA
- > Improved switching losses vs. existing NPC1 modules

Advantages:

- > Excellent efficiency and performance
- > 3 module types with SiC diodes available (F version)
- > Up to four MPP trackers possible using one module

Sales name	Sales product number	Package	Description
Inverter modules	F3L15R12W2H3_B27	SP001055068	Easy 2B PressFIT Inverter Full Bridge Module (9 kVA)
	FS3L25R12W2H3_B11	SP001196096	Easy 2B PressFIT Inverter Full Bridge Module (12 kVA)
	FS3L30R07W2H3F_B11	SP000944592	Easy 2B PressFIT Inverter Full Bridge Module (7 kVA)
	FS3L50R07W2H3F_B11	SP000944582	Easy 2B PressFIT Inverter Full Bridge Module (9 kVA)
	FS3L50R07W2H3_B11	SP001208666	Easy 2B PressFIT Inverter Full Bridge Module (9 kVA)
	F3L75R12W1H3_B27	SP001056132	Easy 1B PressFIT Inverter Phase Leg Module (20 kVA)
	F3L75R12W1H3_B11	SP001355698	Easy 1B PressFIT Inverter Phase Leg Module (25 kVA)
	F3L100R12W2H3_B11	SP001197100	Easy 2B PressFIT Inverter Phase Leg Module (30 kVA)
	F3L150R12W2H3_B11	SP001197148	Easy 2B PressFIT Inverter Phase Leg Module (40 kVA)
F3L200R12W2H3_B11	SP001197126	Easy 2B PressFIT Inverter Phase Leg Module (50 kVA)	
Booster modules	DF75R12W1H4F_B11	SP001080544	Easy 1B PressFIT Booster Module (10 kVA fast)
	DF80R12W2H3_B11	SP000948772	Easy 2B PressFIT Booster Module (10 kVA)
	DF80R12W2H3F_B11	SP000908732	Easy 2B PressFIT Booster Module (10 kVA fast)
	DF120R12W2H3_B27	SP001025032	Easy 2B PressFIT Booster Module (9 kVA)
	DF160R12W2H3_B11	SP000944548	Easy 2B PressFIT Booster Module (20 kVA)
	DF160R12W2H3F_B11	SP000908738	Easy 2B PressFIT Booster Module (20 kVA fast)
	DF200R12W1H3_B27	SP001056182	Easy 1B PressFIT Booster Module (20 kVA)
	DF200R12W1H3F_B11	SP001355692	Easy 1B PressFIT Booster Module (20 kVA fast)

Published by
Infineon Technologies AG
85579 Neubiberg, Germany

© 2016 Infineon Technologies AG.
All Rights Reserved.

Please note!

THIS DOCUMENT IS FOR INFORMATION PURPOSES ONLY AND ANY INFORMATION GIVEN HEREIN SHALL IN NO EVENT BE REGARDED AS A WARRANTY, GUARANTEE OR DESCRIPTION OF ANY FUNCTIONALITY, CONDITIONS AND/OR QUALITY OF OUR PRODUCTS OR ANY SUITABILITY FOR A PARTICULAR PURPOSE. WITH REGARD TO THE TECHNICAL SPECIFICATIONS OF OUR PRODUCTS, WE KINDLY ASK YOU TO REFER TO THE RELEVANT PRODUCT DATA SHEETS PROVIDED BY US. OUR CUSTOMERS AND THEIR TECHNICAL DEPARTMENTS ARE REQUIRED TO EVALUATE THE SUITABILITY OF OUR PRODUCTS FOR THE INTENDED APPLICATION.

WE RESERVE THE RIGHT TO CHANGE THIS DOCUMENT AND/OR THE INFORMATION GIVEN HEREIN AT ANY TIME.

Additional information

For further information on technologies, our products, the application of our products, delivery terms and conditions and/or prices, please contact your nearest Infineon Technologies office (www.infineon.com).

Warnings

Due to technical requirements, our products may contain dangerous substances. For information on the types in question, please contact your nearest Infineon Technologies office.

Except as otherwise explicitly approved by us in a written document signed by authorized representatives of Infineon Technologies, our products may not be used in any life-endangering applications, including but not limited to medical, nuclear, military, life-critical or any other applications where a failure of the product or any consequences of the use thereof can result in personal injury.

X-ON Electronics

Largest Supplier of Electrical and Electronic Components

Click to view similar products for [IGBT Modules category](#):

Click to view products by [Infineon manufacturer](#):

Other Similar products are found below :

[F3L400R07ME4_B22](#) [F4-50R07W2H3_B51](#) [FB15R06W1E3](#) [FB20R06W1E3_B11](#) [FD1000R33HE3-K](#) [FD400R33KF2C-K](#)
[FD401R17KF6C_B2](#) [FD-DF80R12W1H3_B52](#) [FF200R06YE3](#) [FF300R12KE4_E](#) [FF450R12ME4P](#) [FF600R12IP4V](#) [FP10R06W1E3_B11](#)
[FP20R06W1E3](#) [FP50R12KT3](#) [FP75R07N2E4_B11](#) [FS10R12YE3](#) [FS150R07PE4](#) [FS150R12PT4](#) [FS50R07N2E4_B11](#) [FZ1000R33HE3](#)
[FZ1800R17KF4](#) [DD250S65K3](#) [DF1000R17IE4](#) [DF1000R17IE4D_B2](#) [DF1400R12IP4D](#) [DF200R12PT4_B6](#) [DF400R07PE4R_B6](#)
[BSM75GB120DN2_E3223c-Se](#) [F3L300R12ME4_B22](#) [F3L75R07W2E3_B11](#) [F4-50R12KS4_B11](#) [F475R07W1H3B11ABOMA1](#)
[FD1400R12IP4D](#) [FD200R12PT4_B6](#) [FD800R33KF2C-K](#) [FF1200R17KP4_B2](#) [FF300R17KE3_S4](#) [FF300R17ME4_B11](#) [FF401R17KF6C_B2](#)
[FF650R17IE4D_B2](#) [FF900R12IP4D](#) [FF900R12IP4DV](#) [STGIF7CH60TS-L](#) [FP50R07N2E4_B11](#) [FS100R07PE4](#) [FS150R07N3E4_B11](#)
[FS150R17N3E4](#) [FS150R17PE4](#) [FS225R12KE4](#)