

TLE5501 Eval Kit

Scope and purpose

This document describes the Evaluation Kit for the TLE5501 TMR based angle sensor.

The purpose of this manual is to describe the software installation process and how to use the TLE5501 angle sensor Evaluation Kit.

Intended audience

This document is intended for anyone who wants to use the TLE5501 Evaluation Kit

Table of contents

	Table of contents	2
1	General description	3
2	Installation	5
3	Evaluation Kit for Angle Sensors	6
3.1	Connection to PC	6
3.2	Sensor readout	7
3.3	How to calibrate	8
3.4	Safety features	9
3.5	Output buffer	10
4	Revision history	11

General description

1 General description

The Eval Kit consists of:

- an Infineon XMC1100 Boot Kit (microcontroller)
- the TLE5501 Angle Shield which can be plugged onto the Boot Kit
- a “magnetic knob” that can be mounted on top of the shield

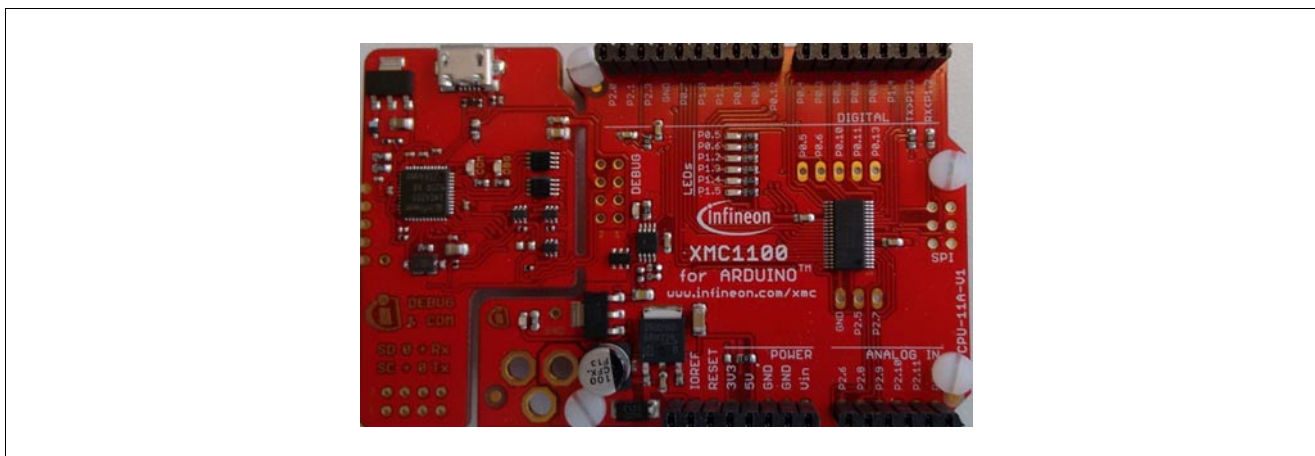


Figure 1 Infineon XMC1100 Boot Kit

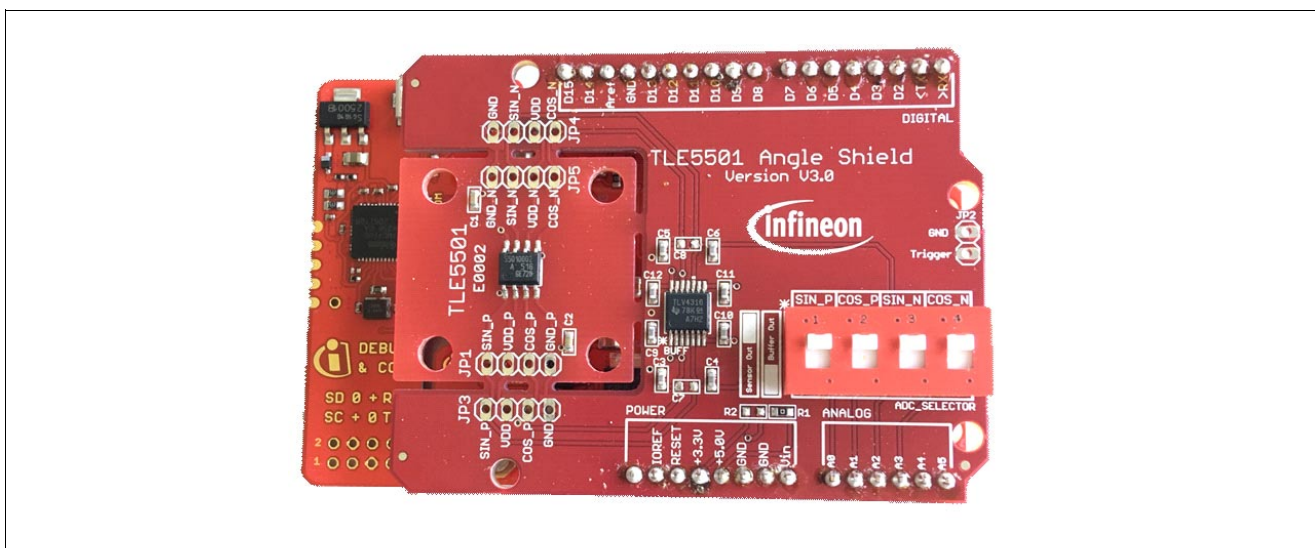


Figure 2 TLE5501 Angle Shield

The Eval Kit is complemented by the TLE5501 Eval Kit GUI (Evaluation Kit for Angle Sensors window, see [Figure 3](#)).

For connection to the PC a micro USB cable is required.

Notes

1. The Eval Kit assumes that the sensor gets 5 V via USB and the integrated regulator on the XMC Boot Kit.
2. All calculations are made with the above assumption! If you create your own setup please also take into account VDD monitoring. Please respect the instructions in the TLE5501 E0002 Safety Manual.

General description

TLE5501 Angle Shield description

The TLE5501 Angle Shield has to be plugged onto the Boot Kit. Care has to be taken that the pins are correctly aligned.

The TLE5501 sensor is soldered on the shield in a “breakout” area that can be easily broken off the shield and used in another application if needed.

The shield has mounting holes for a magnetic knob that can be used to demonstrate the functionality of the sensor.

The shield has also a voltage buffer available on board, and the output of the sensor can be optionally buffered by selecting the correct DIP switch settings.

Installation

2 Installation

1. Connect the Eval Kit with an USB cable to an USB port on your computer.
2. Install the programmer software by double-clicking on the file: **TLE5501_EvalKit_vx.msi**.
3. If you do not have installed Segger Driver & .NET 3.5 included with this installer, install them.
4. Start the installed software TLE5501 – Eval Kit.

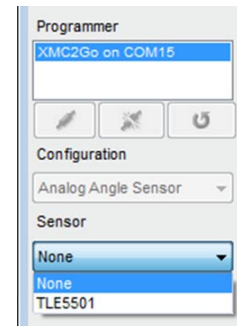
3 Evaluation Kit for Angle Sensors

3.1 Connection to PC

After starting the software, a device should appear in the Programmer list, click the **Connect** button to connect the Eval Kit.



In the **Sensor** drop-down list select the sensor **TLE5501** and click **Start**.



The Evaluation Kit for Angle Sensors window shows the real time angle read-out of the sensor and other related information (see [Figure 3](#)).

Evaluation Kit for Angle Sensors

3.2 Sensor readout

The Evaluation Kit for Angle Sensors window displays the uncalibrated differential angle with the angle gauge. It also reports the voltage for each output (SinP, CosP, SinN, CosN).

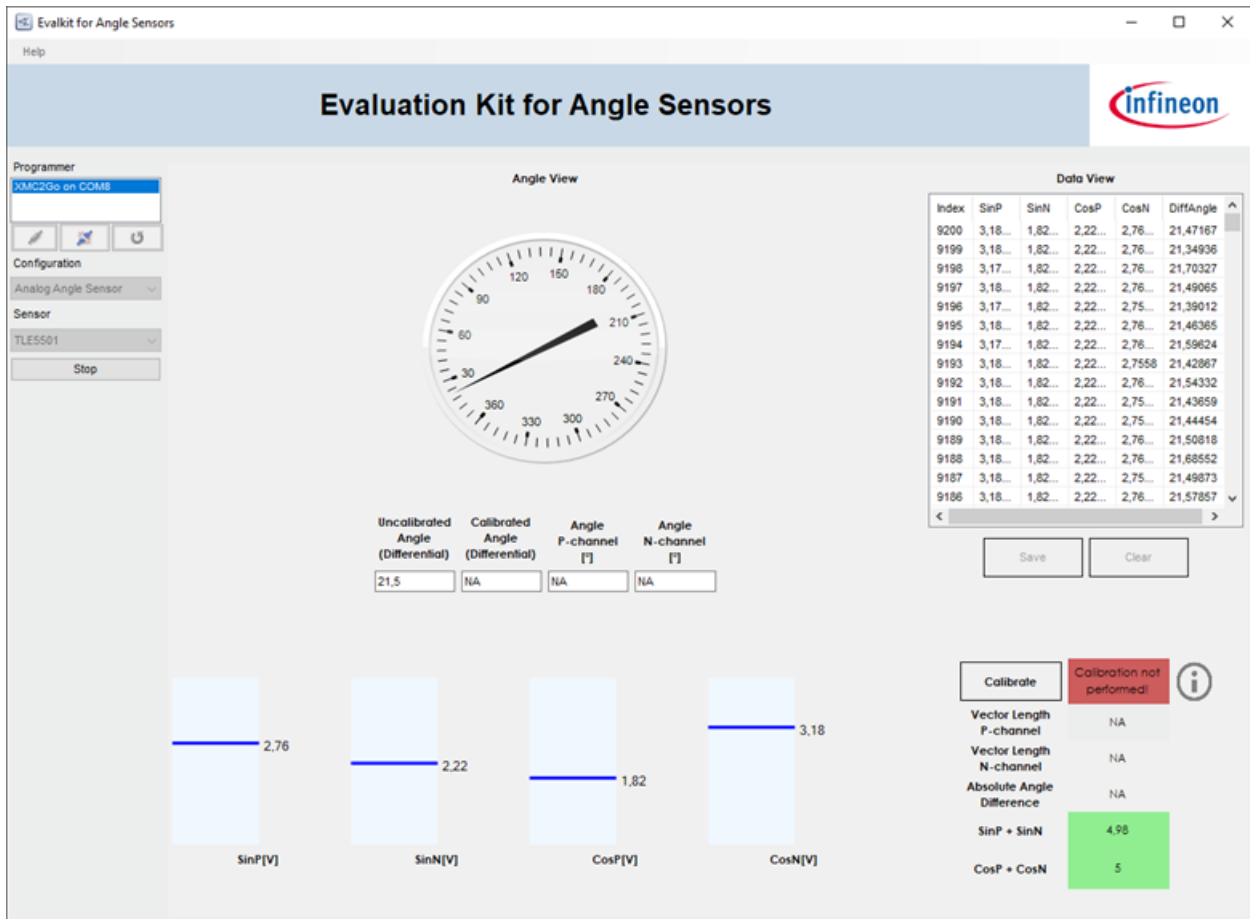


Figure 3 Evaluation Kit for Angle Sensors window

Evaluation Kit for Angle Sensors

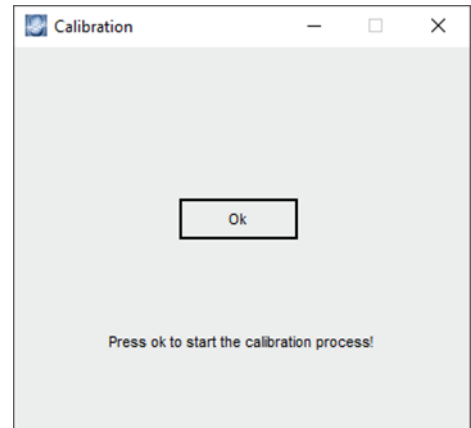
3.3 How to calibrate

For analog angle sensors, the offset, amplitude and orthogonality of the raw signals sin and cos has to be calibrated to achieve high angular accuracy. This calibration procedure can be performed as described below:

Click **Calibrate**. The calibration window appears.



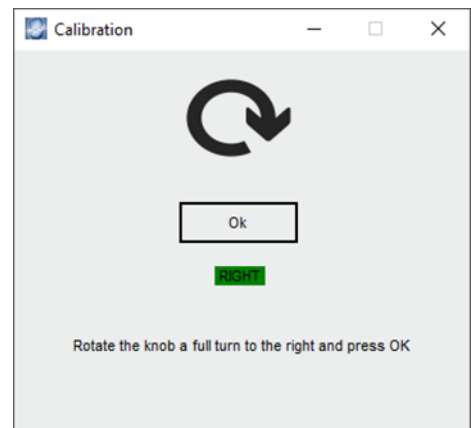
In the calibration window click **Ok**.



Rotate the magnet 360° in the direction shown in the calibration window. If the red label turns green, press **Ok**.



Repeat the process for the other direction, press **Ok**.



Evaluation Kit for Angle Sensors

3.4 Safety features

- The right-down area of the Evaluation Kit for Angle Sensors window displays information that is related to the safety concept for TLE5501 described in the Product Safety Manual.
- To get all the safety fields populated a calibration is required.
- The external safety mechanisms were implemented in the Eval Kit and violations of the expected values are presented in red.

Calibrate	Calibration performed!	
Vector Length P-channel	1	
Vector Length N-channel	,99	
Absolute Angle Difference	4,17	
SinP + SinN	5	
CosP + CosN	5,01	

- If you hover with the mouse over the I icon after performing a calibration you will see more information about the calibration parameters.

Calibrate	Calibration performed!	
Vector P-ch		
Vector N-ch		
Absolute Differ		
SinP + SinN	5,02	
CosP + CosN	5	

Calibration values found

- Mean amplitude CosP = ,73
- Mean amplitude SinP = ,76
- Mean offset CosP = 2,51
- Mean offset SinP = 2,51
- Mean orthogonality error P channel = ,21

3.5 Output buffer

On the sensor shield, there are 4 DIP switches which allow to select an output buffer for the analog raw signal sin and cos. With this buffer enabled, a low output impedance is provided.

For special application, e.g. which high capacitive load, this option is preferred as it avoids the high impedance of the TMR bridge.

Revision history**4 Revision history**

Revision	Date	Changes
Rev. 1.0	2018-08-01	Initial creation.

Trademarks

All referenced product or service names and trademarks are the property of their respective owners.

Edition 2018-08-01
Published by
Infineon Technologies AG
81726 Munich, Germany

© 2018 Infineon Technologies AG.
All Rights Reserved.

Do you have a question about any aspect of this document?
Email: erratum@infineon.com

Document reference

IMPORTANT NOTICE

The information given in this document shall in no event be regarded as a guarantee of conditions or characteristics ("Beschaffheitsgarantie").

With respect to any examples, hints or any typical values stated herein and/or any information regarding the application of the product, Infineon Technologies hereby disclaims any and all warranties and liabilities of any kind, including without limitation warranties of non-infringement of intellectual property rights of any third party.

In addition, any information given in this document is subject to customer's compliance with its obligations stated in this document and any applicable legal requirements, norms and standards concerning customer's products and any use of the product of Infineon Technologies in customer's applications.

The data contained in this document is exclusively intended for technically trained staff. It is the responsibility of customer's technical departments to evaluate the suitability of the product for the intended application and the completeness of the product information given in this document with respect to such application.

For further information on technology, delivery terms and conditions and prices, please contact the nearest Infineon Technologies Office (www.infineon.com).

WARNINGS

Due to technical requirements products may contain dangerous substances. For information on the types in question please contact your nearest Infineon Technologies office.

Except as otherwise explicitly approved by Infineon Technologies in a written document signed by authorized representatives of Infineon Technologies, Infineon Technologies' products may not be used in any applications where a failure of the product or any consequences of the use thereof can reasonably be expected to result in personal injury.

X-ON Electronics

Largest Supplier of Electrical and Electronic Components

Click to view similar products for [Magnetic Sensor Development Tools](#) category:

Click to view products by [Infineon](#) manufacturer:

Other Similar products are found below :

[AS5134 AB](#) [MMC5633NJL-B](#) [MIKROE-1647](#) [MIKROE-1646](#) [EVAL-CN0332-PMDZ](#) [AS5510-WL_EK_DB](#) [ADA4571R-EBZ](#) [AS5170A-SO_EK_AB](#) [4366](#) [AS5013-QF_EK_AB](#) [AS5040 DB V2](#) [AS5045 AB](#) [AS5047D-TS_EK_AB](#) [AS5048A-EK-AB-STM1.1](#) [AS5048-TS_EK_DB](#) [AS5050A-QF_EK_AB](#) [AS5132 AB](#) [AS5132 DB](#) [AS5132-PB](#) [AS5145B-EK-AB-STM1.0](#) [AS5147P-TS_EK_AB](#) [AS5162-EK-AB](#) [AS5172B-TS_EK_AB](#) [AS5247-MF_EK_SB](#) [AS5247U-TQ_EK_SB](#) [AS5306-TS_EK_AB](#) [AS5311-TS_EK_AB](#) [AS5510-SOIC8-AB](#) [AS5600-SO_EK_AB](#) [AS5600-SO_EK_ST](#) [AS5601-SO_EK_ST](#) [AS5601-SO_RD_ST](#) [AS5X47U-TS_EK_AB](#) [SD4Y-EK-XX](#) [USB I&P BOX](#) [EVAL-CN0323-SDPZ](#) [EVAL-CN0368-SDPZ](#) [DFR0033](#) [S2GO3DSENSETLV493DTOBO1](#) [S2GOCURSENSETLI4970TOBO1](#) [TLE5012BE5000MS2GOTOB01](#) [TLE5014PROGKITTOBO1](#) [EVB90316-DC](#) [EVB90316-GO](#) [EVB90333-DC](#) [EVB90393](#) [EVB922xx](#) [MMC5983-B](#) [EXTENSION BOARD V.4.0](#) [HAL USB PROGRAMMER TOOL V.1.0](#)