



Current Sensor 2 Go

– Quick Instruction Guide

Scope:

The following instruction gives a quick overview about the Current Sensor 2 Go GUI. The GUI can also be used for the PGSISI-2 based TLI4970050 PROG-KIT.

SW Installation:

Start the *Infineon-V2.0 GUI for Current Sensor 2GO-FW-V2.0-EN* Windows Installer Package (make sure you have at least local admin rights).

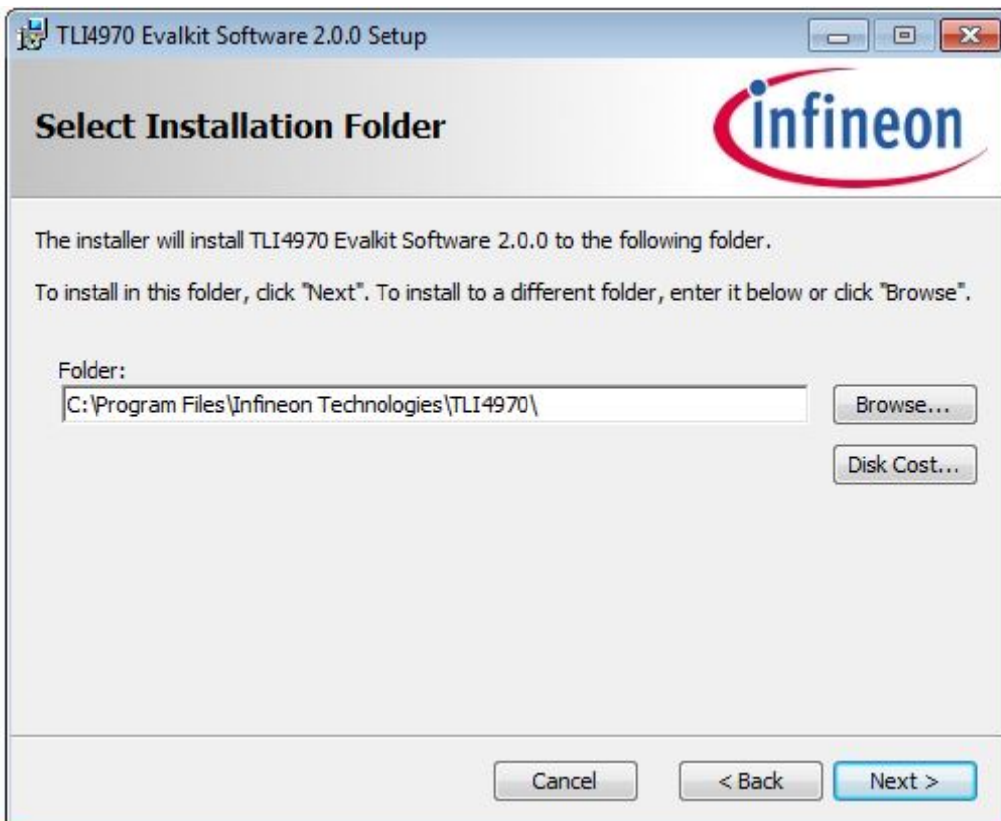




To start the installation process, you have to accept the license agreement:



The installation folder dialog is used to allow the user to choose the folder where application files will be installed:

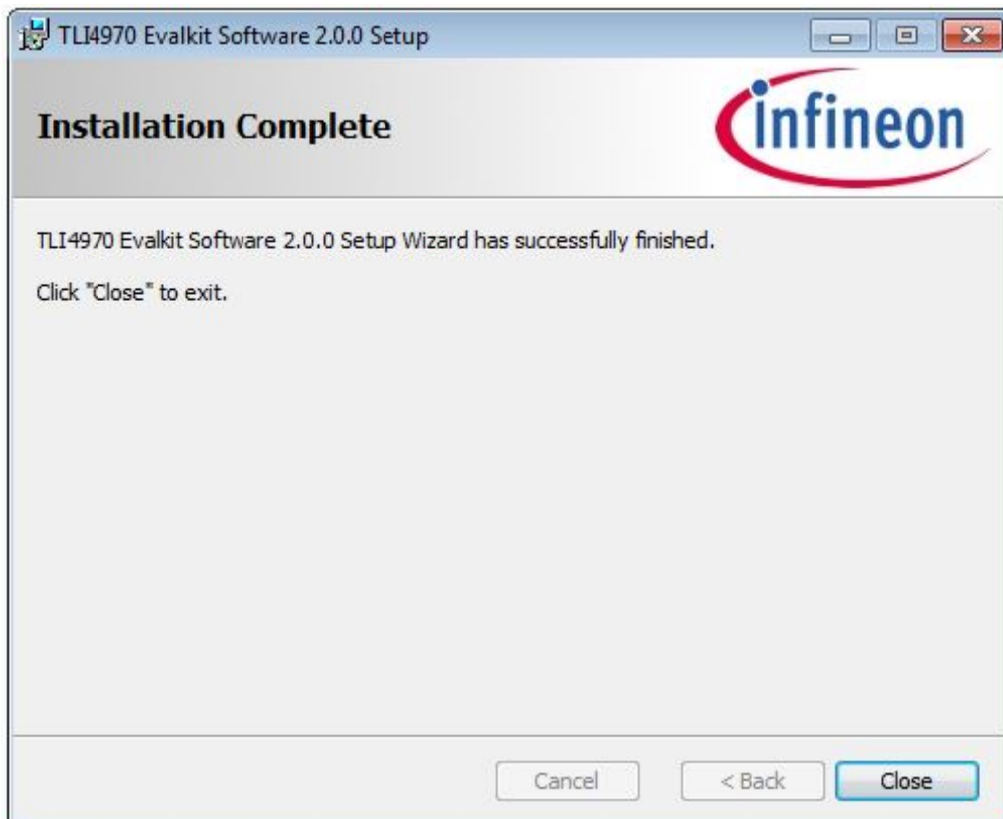




Confirm the installation process:



Following dialog box will be shown after successfully installation of the Current Sensor 2 Go GUI:



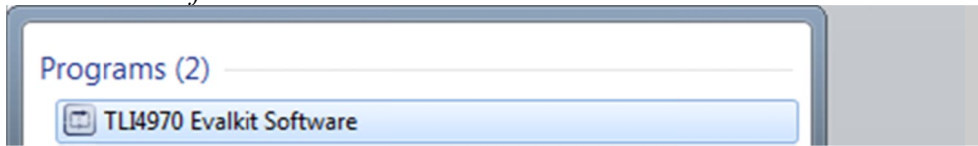
In case the SEGGER / J-Link software package has not been installed before, please follow the SEGGER installer:



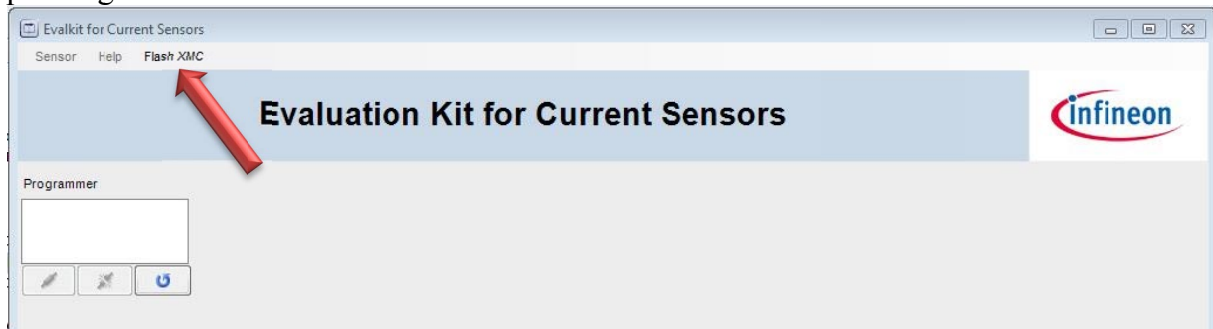


Use of the Current Sensor 2 Go GUI


After successfully installation of the SW, you will find the *TLI4970 Evalkit Software Program* in the *Microsoft Start Menu*.

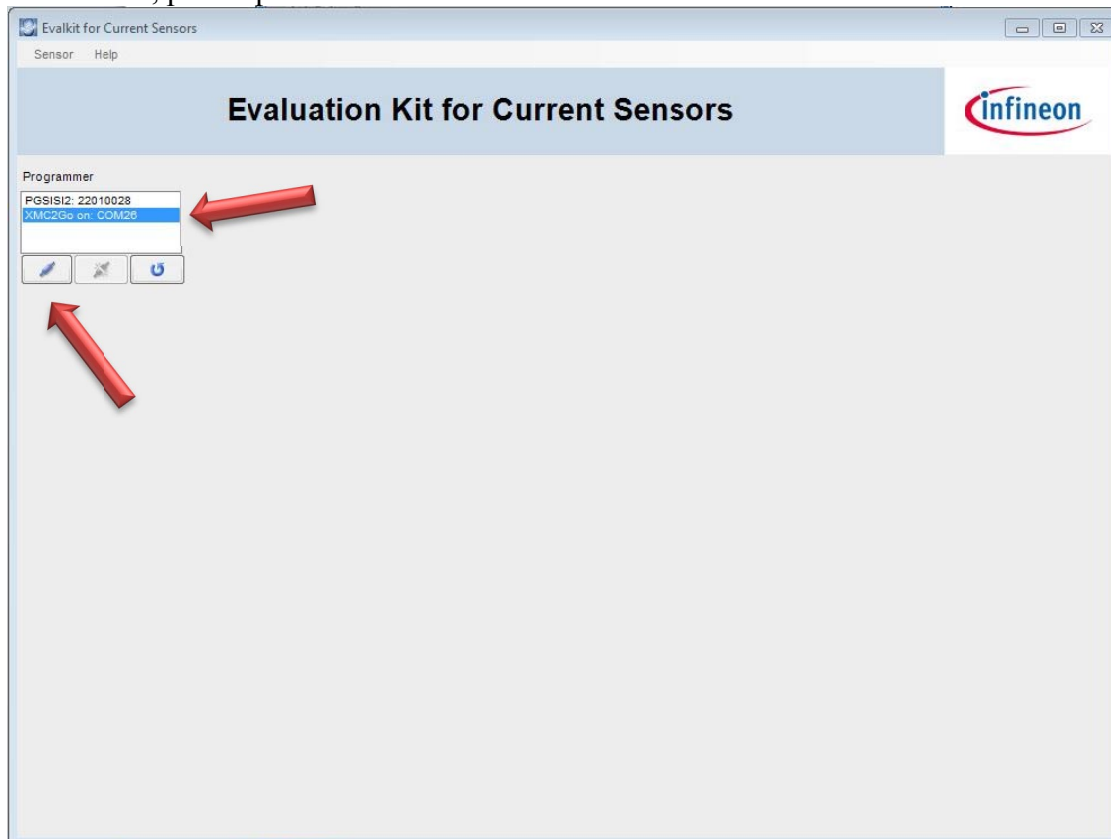


After connecting the Current Sensor 2 Go Kit with your PC (please uses a USB connection cable; not included in the kit) and starting the SW, you first might have to flash the μ C by pressing the *Flash XMC* button:



Note: If the correct firmware version is flashed, the Flash XMC button is not visible.

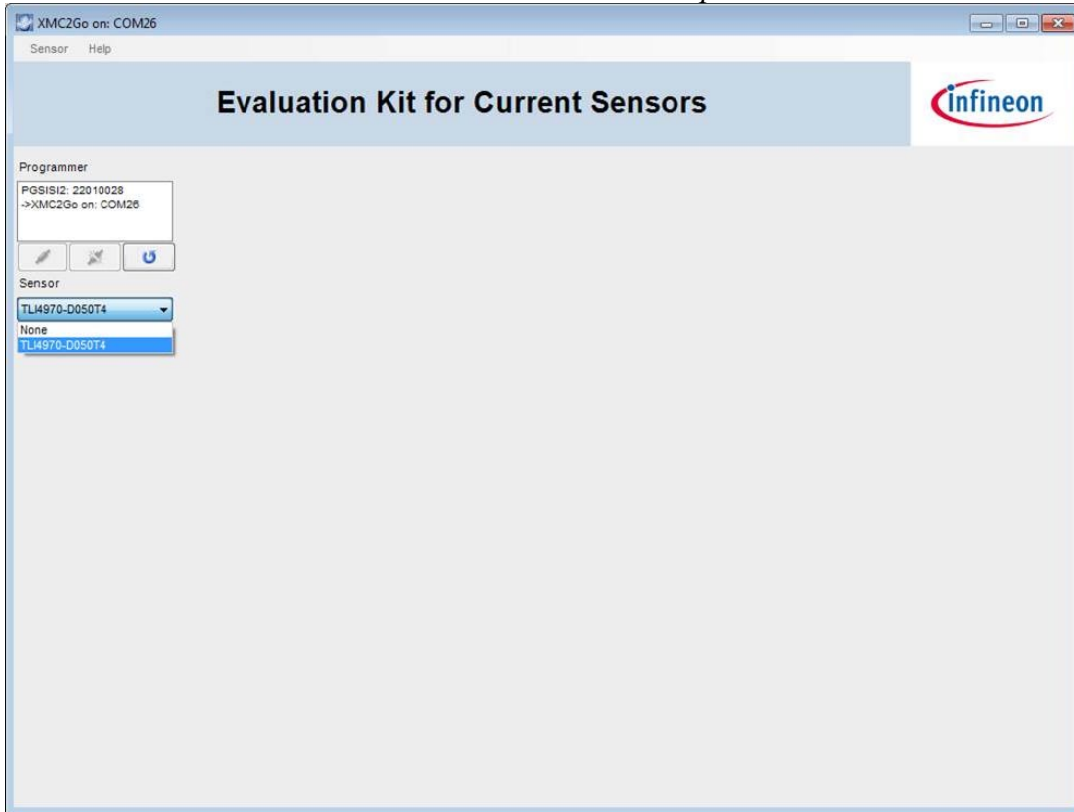
Please select the connected kit (in case no kit is listed, use the refresh button ). Afterwards, please press the connection icon.



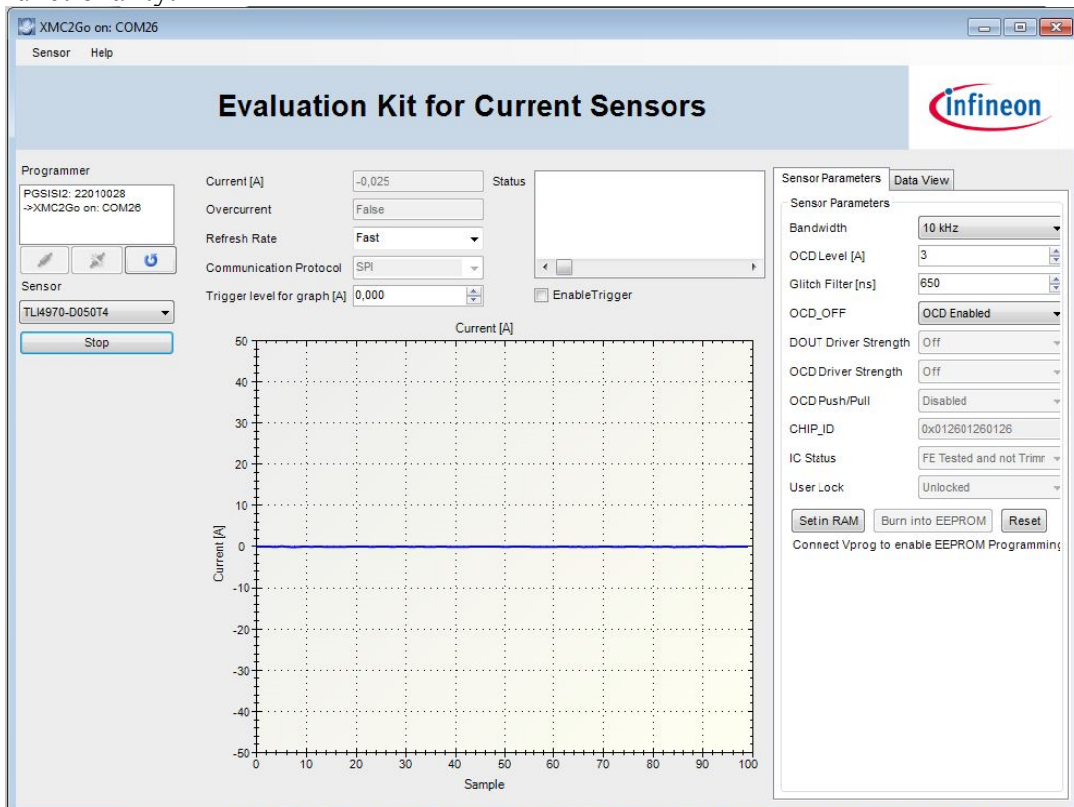
Note: The use of the TLI4970050 PROG-KIT together with this GUI version is also possible!



Now the sensor has to be selected from the *Sensor drop-down menu*:



By pressing the start button, the GUI will show the current value as a kind of oscilloscope functionality:



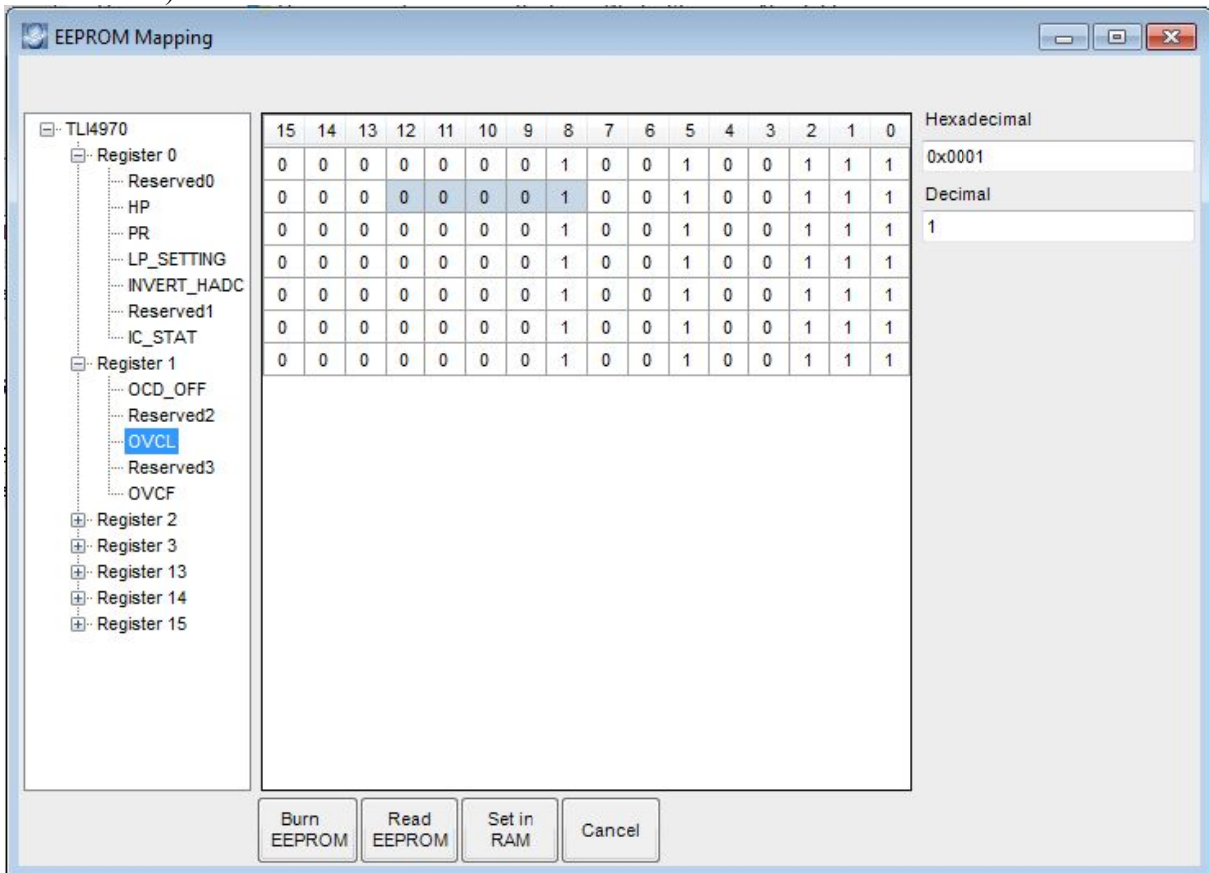
SENSOR Menu

Inside the *Sensor Menu*, you will find three submenus

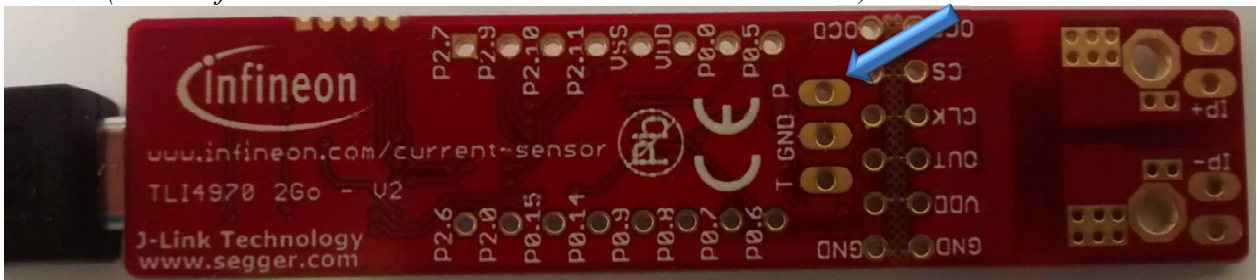
- EEPROM Register
- Interfaces
- Set EEPROM Timing

EEPROM Register

The *EEPROM Register* menu item shows the content of the current sensor EEPROM content. Also this functionality can be used for EEPROM programming (e.g. modification of the over current level):

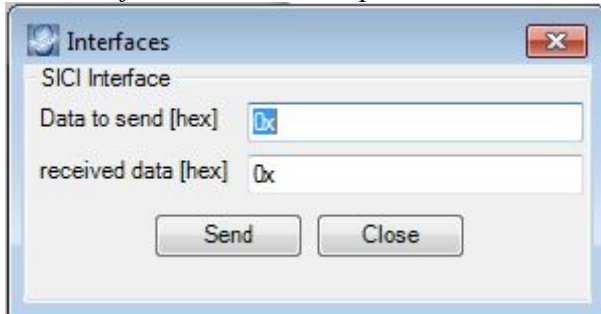


Note: To program the EEPROM, you have to provide a 20.6V voltage supply to the “P” contact (GND reference has to be connected with the GND contact):



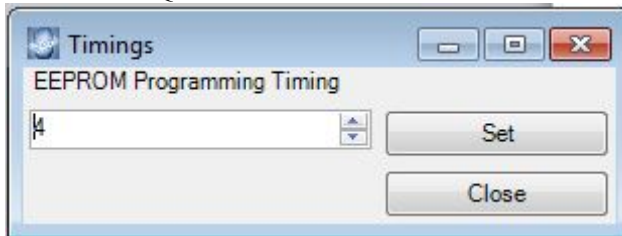
Interfaces

The *Interfaces* menu item opens a window for a single command based SICI communication:



Set EEPROM Timing

The *Set EEPROM Timing* menu item gives the possibility to influence the time of the internal programming pulse. For further information please reference to the “How to Program TLI4970 – Quick Instruction Guide”.





Edition 2015-12-07

Published by

Infineon Technologies AG

81726 Munich, Germany

© 2015 Infineon Technologies AG

All Rights Reserved.

Legal Disclaimer

The information given in this document shall in no event be regarded as a guarantee of conditions or characteristics. With respect to any examples or hints given herein, any typical values stated herein and/or any information regarding the application of the device, Infineon Technologies hereby disclaims any and all warranties and liabilities of any kind, including without limitation, warranties of non-infringement of intellectual property rights of any third party.

Information

For further information on technology, delivery terms and conditions and prices, please contact the nearest Infineon Technologies Office (www.infineon.com).

Warnings

Due to technical requirements, components may contain dangerous substances. For information on the types in question, please contact the nearest Infineon Technologies Office.

Infineon Technologies components may be used in life-support devices or systems only with the express written approval of Infineon Technologies, if a failure of such components can reasonably be expected to cause the failure of that life-support device or system or to affect the safety or effectiveness of that device or system. Life support devices or systems are intended to be implanted in the human body or to support and/or maintain and sustain and/or protect human life. If they fail, it is reasonable to assume that the health of the user or other persons may be endangered.

X-ON Electronics

Largest Supplier of Electrical and Electronic Components

Click to view similar products for [Current Sensor Development Tools](#) category:

Click to view products by [Infineon](#) manufacturer:

Other Similar products are found below :

[BM14270AMUV-EVK-001](#) [S2GOCURSENSETLI4971TOBO1](#) [SEN0098](#) [1164](#) [904](#) [TLI4970050MS2GOTOBO1](#) [DVK91205](#) [DVK91206](#)
[MIKROE-3308](#) [MIKROE-3393](#) [MIKROE-4203](#) [MIKROE-1578](#) [MIKROE-2987](#) [SEN0211](#) [9040740-94 REV B4](#) [SEN0287](#) [SEN0288](#) [410-](#)
[325](#) [101020616](#) [101020652](#) [SEN-12040](#) [SEN-13679](#) [SEN-14544](#) [2120](#)