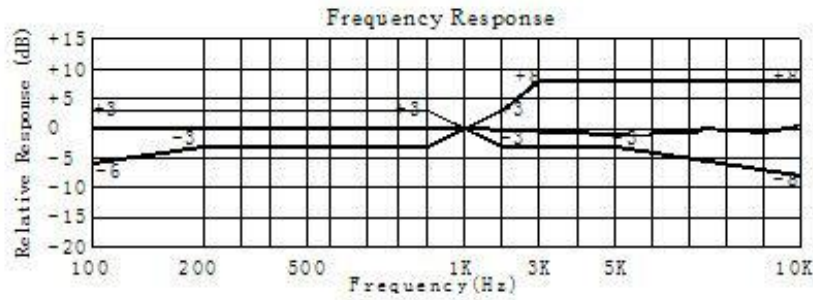


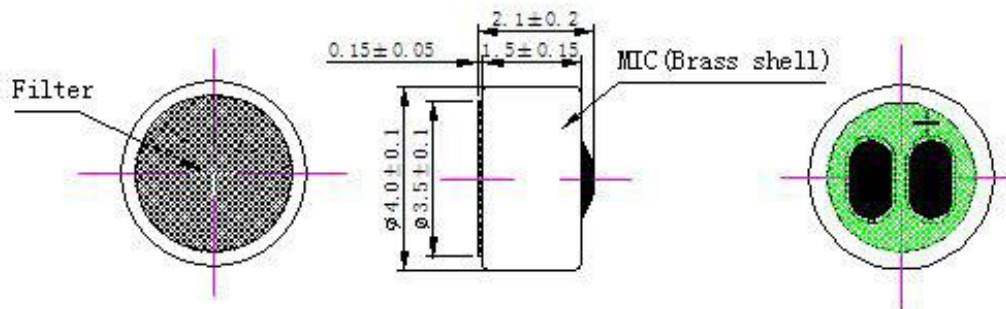
## GMI4015-2C 全指向驻积体咪头

详情说明

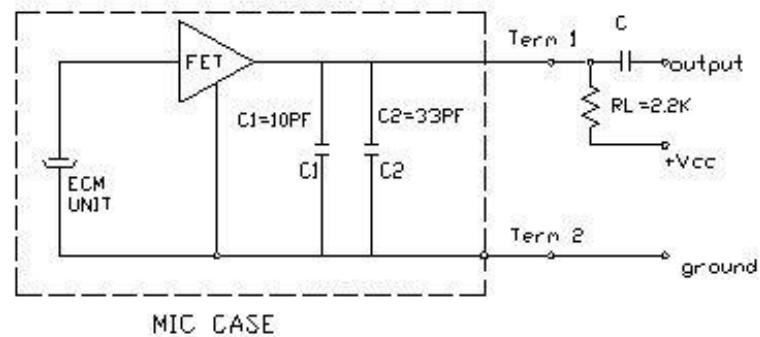
全指向性



### D. APPEARANCE DRAWING



### E. MEASUREMENT CIRCUIT



| No. | Item                       | Symbol | Unit | Specification   | Condition                        |
|-----|----------------------------|--------|------|-----------------|----------------------------------|
| 1   | Directivity                |        |      | Omnidirectional |                                  |
| 2   | Sensitivity                | S      | dB   | -34~-44±3       | f=1KHz, 1Pa<br>0dB=1V/ Pa        |
| 3   | Standard operating voltage | Vs     | V    | 2.0             |                                  |
| 4   | Output impedance           | Zout   | KΩ   | ≤2.2            | f=1KHz, 1Pa                      |
| 5   | Frequency                  |        | Hz   | 100-10,000      |                                  |
| 6   | Max operating voltage      |        | V.   | 10              |                                  |
| 7   | Sensitivity reduction      | Δ S-Vs | dB   | -3              | f=1KHz, 1Pa<br>Vs=1.5VDC to 3VDC |
| 8   | Max. current consumption   | IDSS   | mA   | ≤0.5            |                                  |
| 9   | Signal to noise ration     | S/N    | dBA  | ≥58             | f=1KHz, P in=1Pa                 |
| 10  | Max input sound level      | SPL    | dB   | 110             |                                  |
| 11  | Operation temp.            |        | ℃    | -30 ~+70        |                                  |
| 12  | Storage temp.              |        | ℃    | -40 ~+80        |                                  |
| 13  | Dimension                  |        | mm   | φ 4.0 x H1.5    | See appearance drawing           |
| 14  | Terminal                   |        |      | Terminal        | See appearance drawing           |
| 15  | Approvals                  |        |      | RoHs FCC        |                                  |

We use "Pascal(Pa)" indication of sensitivity as per the recommendation of I.E.C.(International Electro technical Commission)

TheSensitivity of "Pa" will increase 20dB comparing with "ubar" indication

Example: -60dB(0dB=1V/ubar) =-40dB(1V/Pa)

## X-ON Electronics

Largest Supplier of Electrical and Electronic Components

*Click to view similar products for [Microphones](#) category:*

*Click to view products by [INGHAI](#) manufacturer:*

Other Similar products are found below :

[BCM4013OLFC-42-JST-ZHR-2](#) [FG-23329-P142](#) [FB-EI-31809-000](#) [SPM04C-38/1186-T/R](#) [BCM4013OSBC-42 LF](#) [TOW-1242P-R](#)  
[BCM9765](#) [BCM9767P](#) [LD-MC-0905P](#) [LD-MC-6035](#) [LD-MC-9765](#) [CMC-4015-40P](#) [PMO-6022SN-42UQ](#) [PMOF-6027WN-44KDQ](#) [PMO-](#)  
[4015PN-42KDQ](#) [CMC-6027-42L100](#) [PMO-6027P-40KDQ](#) [PMOF-6050S-44UQ](#) [PMO-4530PN-47UQ](#) [PMO-4015MN-42HXQ](#) [CMC-6036-](#)  
[40T](#) [PMOF-9767NP-46DQ](#) [PMOF-9745W-42UQ](#) [PMOF-9745P-39UQ](#) [CMC-6015-42P](#) [CMC-4015-40T](#) [PMO-6022PN-48KDQ](#) [PMOF-](#)  
[9745S-42UQ](#) [PMOF-9767NS-40DQ](#) [PMOF-6027NSN-36KDQ](#) [AOM-5024L-HD-R](#) [ROM-2235P-HD-R](#) [CMC-6010-42T](#) [1007089-1](#) [CMC-](#)  
[9745-130T](#) [BJ-28471-000](#) [POM-2730L-HD-R](#) [TOM-1537L-HD-R](#) [ROM-2235L-HD-R](#) [DUM-4546L-C3310-R](#) [CMC-4015-130T](#) [CMC-6050-](#)  
[40T](#) [CMC-6035-130T](#) [CMC-6015-47P](#) [BCM9745P-44](#) [BCM9767-42](#) [LD-MC-4011](#) [LD-MC-6027](#) [LD-MC-6035P](#) [LD-MC-6035W](#)