

規格承認書

PECIFICATION FOR APPROVAL

客戶

CUSTOMER :

項目

ITEM : 腔体喇叭 側出音

型號

TYPE : GSPK3611053BOXR-8R1W-L200S-1.25T

描述

DESCRIPTION : L36*W10.8*H5.3mm L200mm 8ohm 1.0W S.P.L: 89dB+/- 3dB

客戶料號

CUSTOMER NO. :

規格書號

SPECIFICATION NO. :

版本

EDITION NO. : V1.0

日期

DATE : 2023-9-20

客戶承認

CUSTOMER CONFIRM AND SIGN

檢查 TESTED BY	審核 CHECKED BY	承認 APPROVED BY

東莞市贏海電子有限公司

DONGUAN INGHAI ELECTRONICS CO.,LTD

製作 ISSUED BY	審查 CHECKED BY	確認 APPROVED BY
周明	陈铭	

地址：廣東省東莞市長安鎮廈邊元灶頭工業區 16-6 號

電話 / TEL: 0769-83060958 傳真 / FAX: 0769-81608993

網址: [HTTP://WWW.INGHAI.COM](http://www.inghai.com)

		MODEL NO.	8 Ω 1W-Pin350 -1.25 红黑端子绞线	P1/6
SPECIFICATION				
ISSUED DATE	2020-06-06			
REVERSION	005A	UPDATE	0	
<p>1. SCOPE This specification covers our product of dynamic speaker unit for mobile telephone use.</p> <p>2. MECHANICAL LAYOUT & DIMENSIONS Shown in Fig.5</p> <p>3. GENERAL REQUIREMENTS</p> <p>3.1 OPERATING TEMPERATURE RANGE: -20°C ~ +60°C</p> <p>3.2 STANDARD TEST CONDITIONS:</p> <p>Temperature: 17~25°C</p> <p>Relative Humidity: 45%~80%(RH)</p> <p>Air Pressure: 860~1060 hPa</p> <p>3.3 JUDGEMENT CONDITIONS:</p> <p>Temperature: 20±2°C</p> <p>Relative Humidity: 60%~70%(RH)</p> <p>Air Pressure: 860~1060 hPa</p> <p>4. SPEAKER MODE</p> <p>4.1 SOUND PRESSURE LEVEL</p> <p>89±3dB SPL @1.0,1.2,1.5,2.0KHz in average (0dB SPL=20μPa)</p> <p>Measuring condition: 0.1W (Sine wave) 10cm measured with baffler shown in Fig.1.</p> <p>4.2 IMPEDANCE: 8±15%Ω (@2KHz 1V) without baffler.</p> <p>4.3 MEASURING DIAGRAM: Shown in Fig.1.</p> <p>4.4 TYPICAL FREQUENCY RESPONSE CURVE: Shown in Fig.2.</p> <p>4.5 RATED POWER: 0.8W. MAX POWER: 1.0W</p> <p>4.6 RESONANCE FREQUENCY (F0): 800±20%Hz @ Fo ~ 10KHz (By Output S.P.L. -10dB)</p> <p>4.7 DISTORTION: Less than 5%, At 1.6KHz ,2.0 Vrms</p> <p>4.8 BUZZ RATTLE: Sine wave between at 2.83 Vrms / 50~5000Hz</p>				
NO	DATE	DUE TO	NEW STATUS	
			REVISION	UPDATE
			SIGNATURE	

1					
2					
3					
SPECIFICATION		MODEL NO.	8 Ω 1W-Pin350		P2/6
ISSUED DATE	2020-06-06		-1.25 红黑端子绞线		
REVERSION	005A	UPDATE	0		

■ **FREQUENCY MEASURING CIRCUIT (SPEAKER MODE) (Fig.1)**

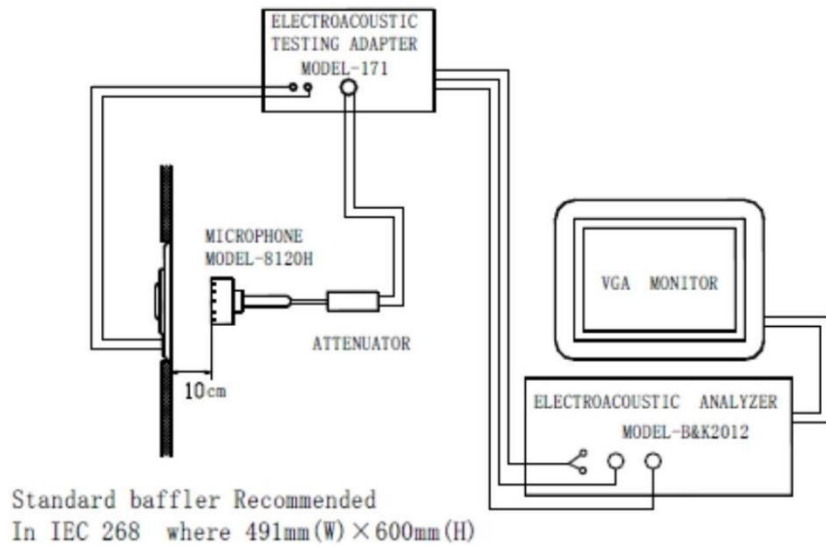


Fig.1 Illustration of measuring diagram (speaker mode)

■ **TYPICAL FREQUENCY RESPONSE CURVE (SPEAKER MODE) (Fig.2)**

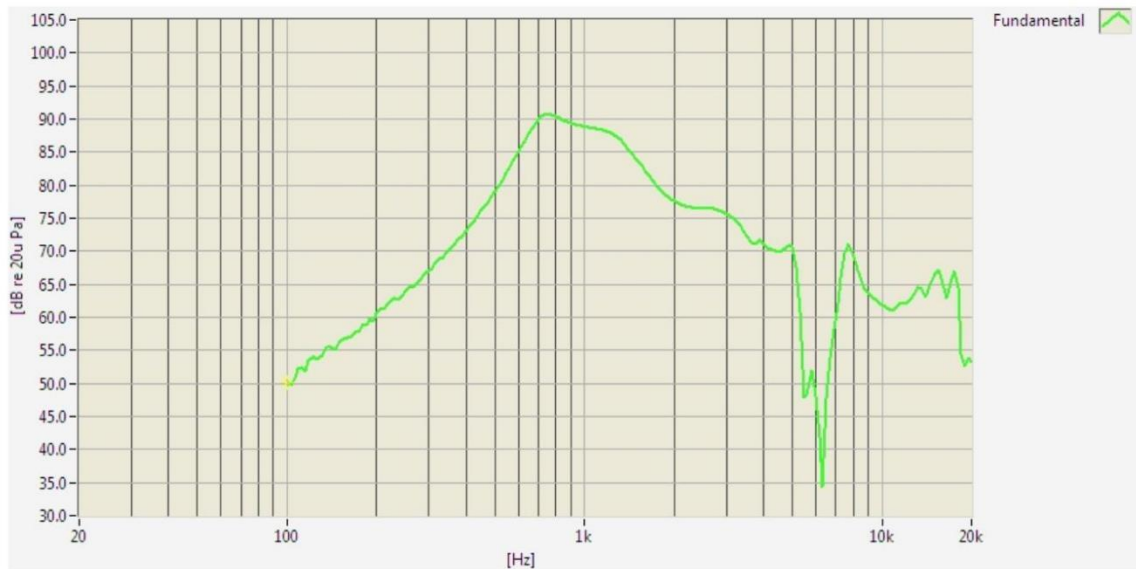


Fig.2 Typical frequency response curve (speaker mode)

N O	DATE	DUE TO	NEW STATUS		SIGNATURE
			REVISION	UPDATE	
1					

3					
SPECIFICATION		MODEL NO.	8 Ω 1W-Pin350		P3/6
ISSUED DATE	2020-06-06		-1.25 红黑端子绞线		
REVERSION	005A	UPDATE	0		
5. RELIABILITY TESTS					
<p>The sound pressure as specified shall neither deviate more than $\pm 3\text{dB}$ from the initial value, nor any significant damage after any of following testing.</p>					
5.1 HIGH TEMPERATURE TEST					
High temperature:	+70\pm2°C		Duration:	96 hours	
5.2 LOW TEMPERATURE TEST					
Low temperature :	-40\pm2°C		Duration:	96 hours	
5.3 HEAT SHOCK TEST (See in Fig.3)					
High temperature:	+70\pm2°C		Low temperature:	-30\pm2°C	
Changeover time:	< 30 minutes		Duration:	1 hour	
Cycle:	50				
5.4 HUMIDITY TEST					
Temperature:	+40\pm2°C		Relative humidity:	90~95%	
Duration:	96 hours				
5.5 TEMPERATURE CYCLE TEST (See in Fig.4)					
Temperature:	-40°C		+70°C		
Duration:	45 minutes		45 minutes		
Temperature gradient:	1~3°C/min.		Cycle:	25	
5.6 DROP TEST					
Mounted with dummy set mass:	100 g		Height:	1.52 m	
Cycle:	6 (1 each plain)		onto the concrete board		
5.7 LOAD TEST					
White Noise Without Weighted Filter 2.83Volts.(RMS) 96 Hrs.					
NO	DATE	DUE TO	NEW STATUS		SIGNATURE
			REVISION	UPDATE	
1					
2					

SPECIFICATION		MODEL NO.	8 Ω 1W-Pin350	P4/6
ISSUED DATE	2020-06-06		-1.25 红黑端子绞线	

REVERSION	005A	UPDATE	0
-----------	------	--------	---

■ **HEAT SHOCK TEST (Fig.3)**

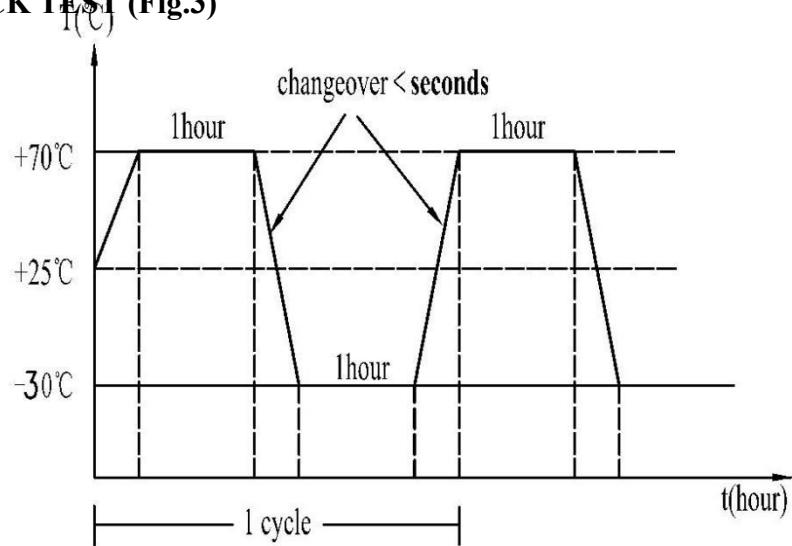


Fig.3 Illustration of heat shock test

■ **TEMP. CYCLE TEST (Fig.4)**

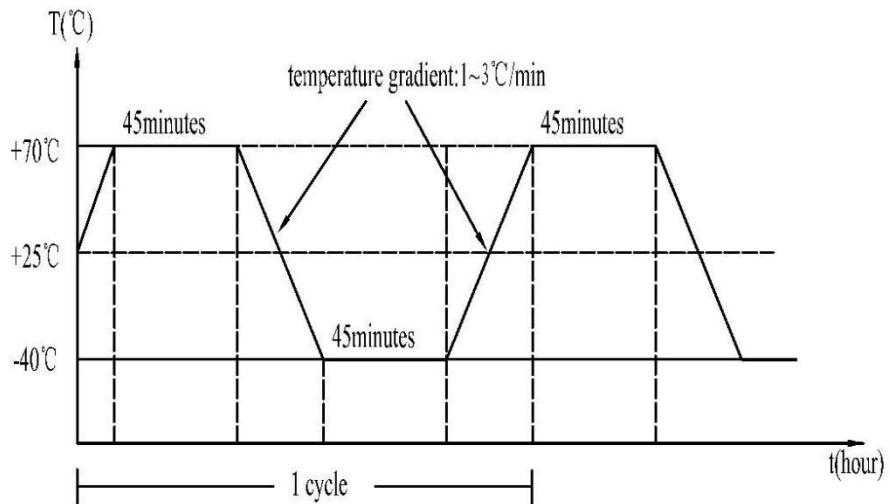
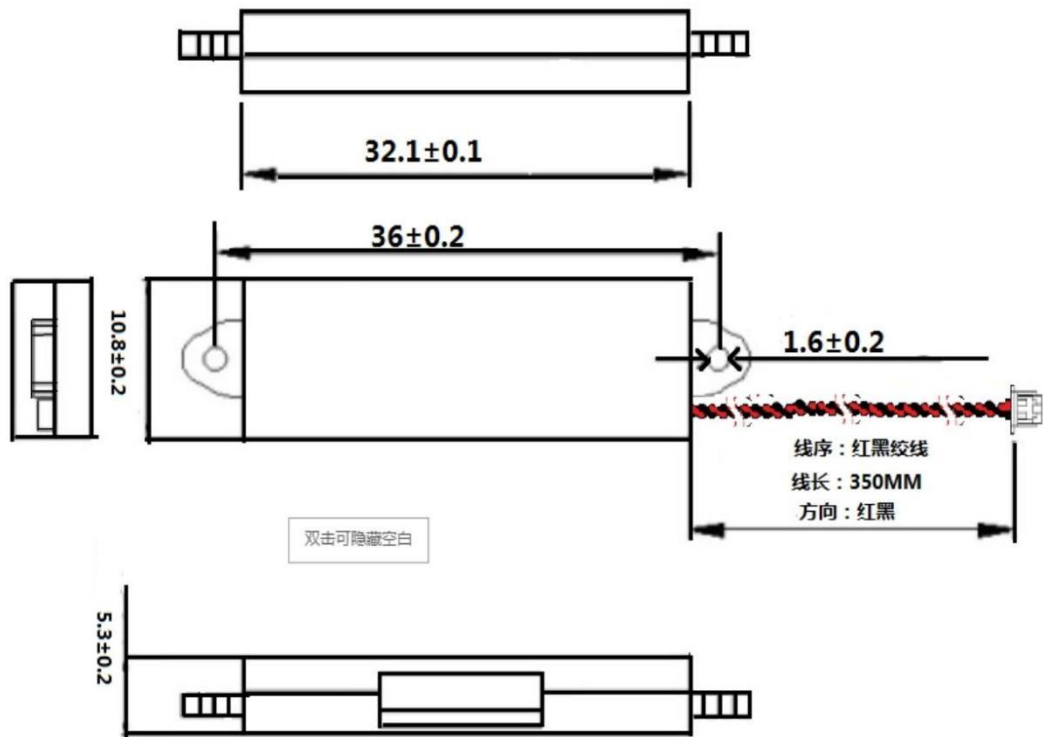


Fig.4 Illustration of temp. cycle test

		NEW STATUS		
NO	DATE	DUE TO	REVISION	UPDATE
				SIGNATURE
1				

SPECIFICATION		MODEL NO.	8 Ω 1W-Pin350 -1.25 红黑端子绞线	P5/6
SSUED DATE	2020-06-06			
REVERSION	005A	UPDATE	0	

6. DIMENSIONS (Fig.5) Unless otherwise specified, tolerance: ± 0.2 (unit: mm)



BOM

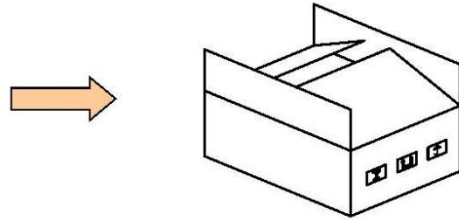
ITEM	DESCRIPTIONS	SPEC.	SUPPLIER	QTY	REMARK
1	Front cover	/		1	
2	Diaphragm	/		1	
3	Voice coil	/		1	
4	Inner pole plate	/		1	
5	Magnet	/		1	
6	Outer pole shoe	/		1	
7	Yoke assembly	/		1	
8	Lead wire	/		1	
9	Adhesive foam ring incl. mesh screen	/		1	
10	Dust screen	/		1	

NO	DATE	DUE TO	NEW STATUS		SIGNATURE
			REVISION	UPDATE	
1					
2					

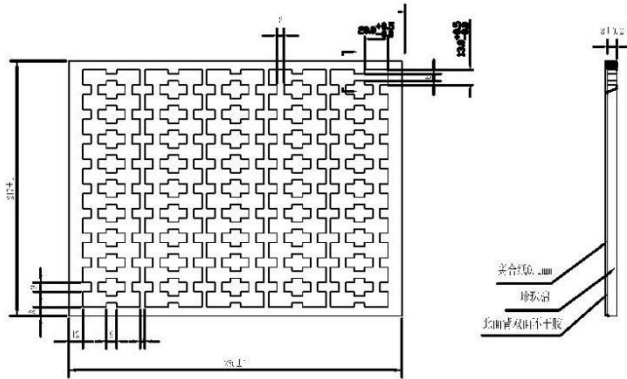
SPECIFICATION		MODEL NO.	8 Ω 1W-Pin350 -1.25 红黑端子绞线	P6/6
ISSUED DATE	2020-06-06			
REVERSION	005A	UPDATE	0	

7. PACKING DETAILS (Fig.6)

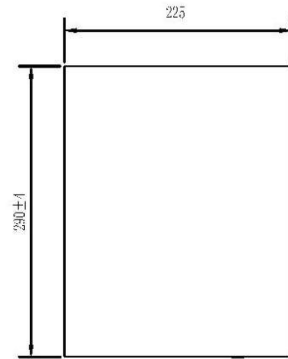
DYNAMIC SPEAKER	
TYPE:QUANTITY:	GROSS WT: KG
NET WT:	KG
VOLUME:	× × CM



DRAWING OF PS (POLYSTYRENE) TRAY (BOTTOM) (TOP)



DRAWING OF PS (POLYSTYRENE) COVER (TOP)



(unit: mm)

【NOTE】

1. 100pcs of receiver in each tray;
2. 10trays in one paper box.

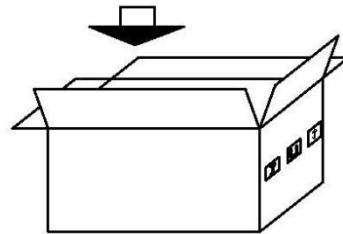


Fig.6 Illustration of packaging & marking

NO	DATE	DUE TO	NEW STATUS		SIGNATURE
			REVISION	UPDATE	
1					
2					
3					

..... **THE END**

X-ON Electronics

Largest Supplier of Electrical and Electronic Components

Click to view similar products for [Speakers & Transducers](#) category:

Click to view products by [INGHAI](#) manufacturer:

Other Similar products are found below :

[FC-30814-P127](#) [AS02832MR-2-R](#) [PB-1220PE](#) [PB-2015PQ](#) [SWFK-31736-000](#) [PT-2065FW](#) [PT-4175W](#) [PB-0927PQ](#) [BF-9778-000](#) [MBS](#)
[3000-1811-A1AB08-0](#) [SMS2020-08H4.5 LF](#) [BDT1717-08H6.5W56MLF](#) [AS03608MR-LW100-R](#) [SP570445-4](#) [FS7833NB0830-H19.0-R01](#)
[FS77DS0850-H24-R01](#) [GSPK5010TN-4R2W](#) [GSPK5010TN-4R3W](#) [KLJ-1504R8W0.5-L44](#) [FS7423NB0430-H10.0](#) [FS50DS0430-H12.7 PEI](#)
[FS3511NB0808-H6.7-R01](#) [FS4020NB0410-H6.0-R01](#) [FS66W04100-H31](#) [FS45DS0880-H24.8-R02](#) [FS32NS0820-H5.8-R01](#) [FS2112NB0807-](#)
[H7.0-R01](#) [FS3520NS0820-H7.9-P1.25-L60](#) [FS50DS0430-H13.3-R24](#) [FS3411P08-H4.0](#) [FS26NS0820-H4.9-R01](#) [FS14430NB0880-H30-R01](#)
[FS5835DS0850-H19.4-R01](#) [FS2011NB0807-H3.9-R01](#) [FS28DS0820-H9.4-R01](#) [FS66W0830-H27](#) [FS66W0850-H22](#) [FS40DS0830-H11.2-](#)
[P2.0-L100](#) [FS28DS0830-H15.3](#) [FS102W0480-H35](#) [FS3525NS0820-H5.5-R01](#) [FS5035NB0820-H26.8-R01](#) [FS27DS0830-H10.8-R01](#)
[FS3915NB0808-H11.5-R01](#) [FS3020NB0808-H4.0-R01](#) [FS3616NB0808-H10-R01](#) [FS3514NB0808-H6.0-R01](#) [FS40DS0450-H18.3](#)
[FS77W0450-H23.5](#) [FS77W0850-H25.5](#)