

規格承認書

PECIFICATION FOR APPROVAL

客戶

CUSTOMER :

項目

ITEM :

超声波传感器 (货车专用)

型號

TYPE :

GU16A01L05-A043

描述

DESCRIPTION : \varnothing 34/30 x H40.5mm 40KHz 线长 200+2300mm 收发一体 双角度

客戶料號

CUSTOMER NO. :

規格書號

SPECIFICATION NO. :

版本

EDITION NO. :

V1.0

日期

DATE :

2024-1-3

客戶承認

CUSTOMER CONFIRM AND SIGN

檢查 TESTED BY	審核 CHECKED BY	承認 APPROVED BY

東莞市贏海電子有限公司

DONGUAN INGHAI ELECTRONICS CO.,LTD

製作 ISSUED BY	審查 CHECKED BY	確認 APPROVED BY
周明	刘承成	

地址：廣東省東莞市虎門鎮懷德社區雅瑤工業區

電話 / TEL : 0769-83060958 傳真 / FAX : 0769-81608993

網址 : [HTTP://WWW.INGHAI.COM](http://www.inghai.com)

A. Scope

This specification applies Ultrasonic sensor GU16A01L05-A043

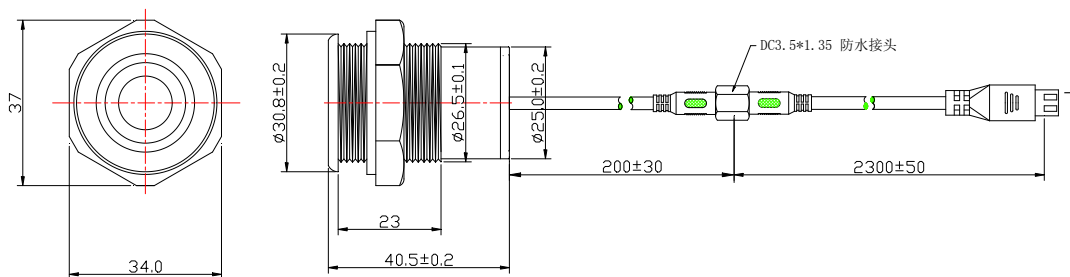
B. Characteristics

- 1.1) Open structure and separate use
- 1.2) Compact and light weight
- 1.3) High sensitivity and sound pressure
- 1.4) Less power consumption
- 1.5) High reliability

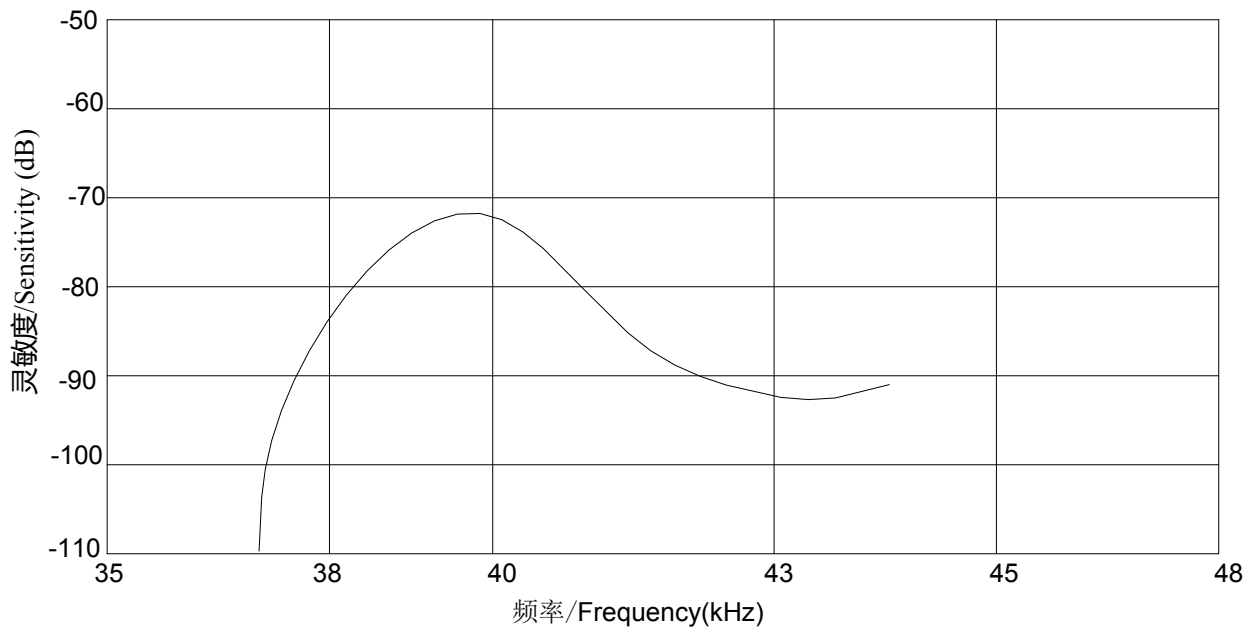
C. Technical terms

1	Center frequency(KHz)	40 ± 1.0 KHz
2	Echo Sensitivity	≥ 300 mV
3	Decay Time	≤ 1.5 ms
4	Directivity (deg) X-axis	40 ± 15
5	Directivity (deg) Y-axis	40 ± 15
6	Capacitance (pF)	$2200 \pm 15\%$
7	Allowable Maximum Input Voltage(Vp-p)	140(40KHz) Pulse width 0.5ms, interval 20ms
8	Operating Temperature($^{\circ}$ C)	-30~+80
9	Storage temperature($^{\circ}$ C)	-40~+85

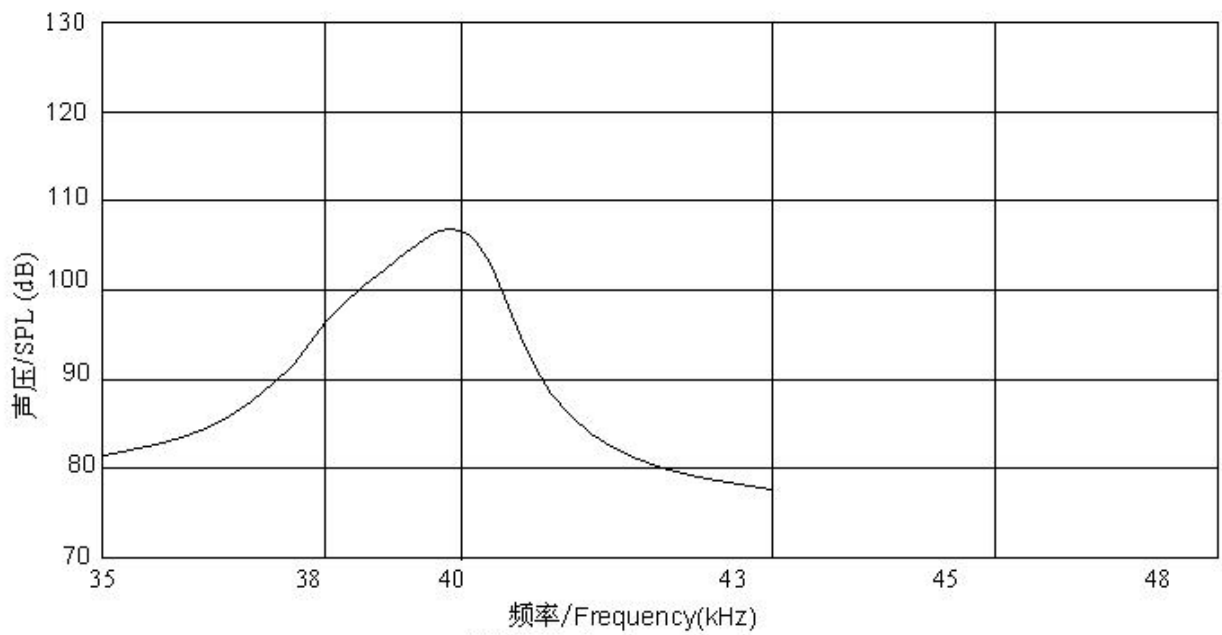
D .Drawing



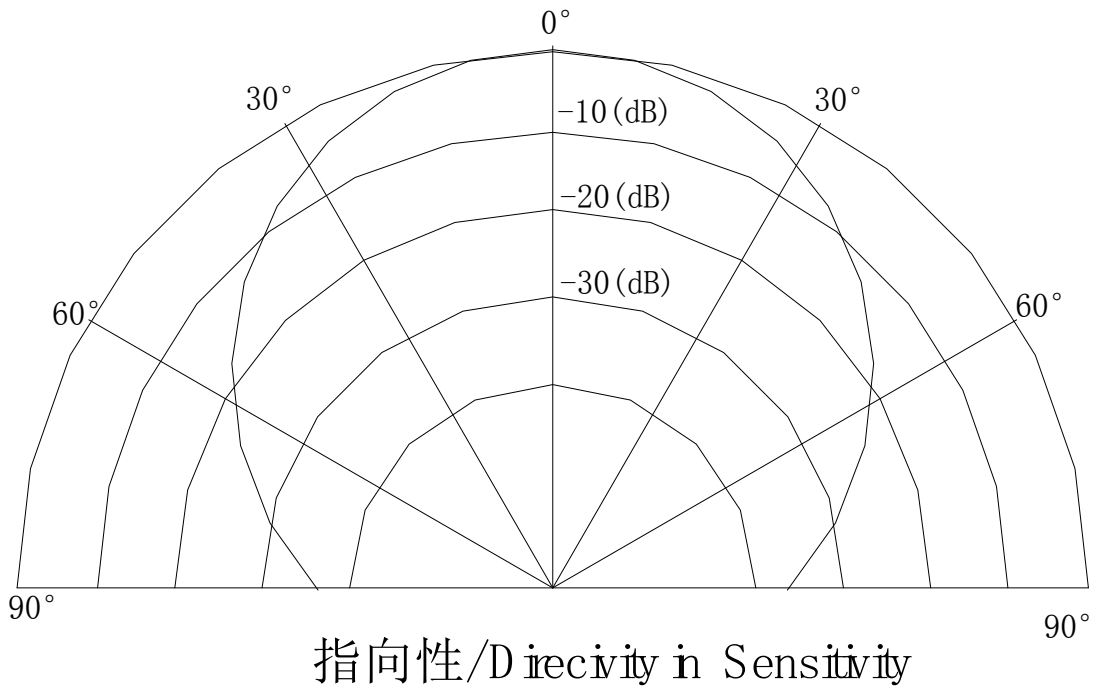
E. Beam Pattern



灵敏度-频率特性图/Sensitivity-Freq.Characteristics

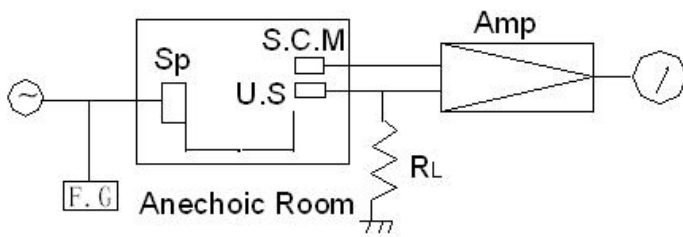


声压-频率特性图/SPL-Freq.Characteristics



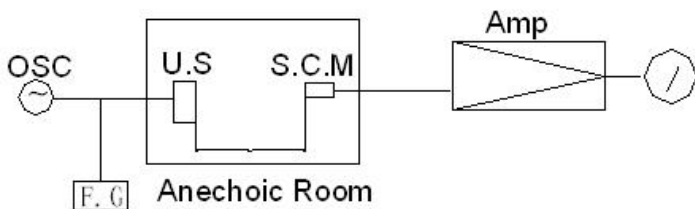
F. Test Circuit

Receiver



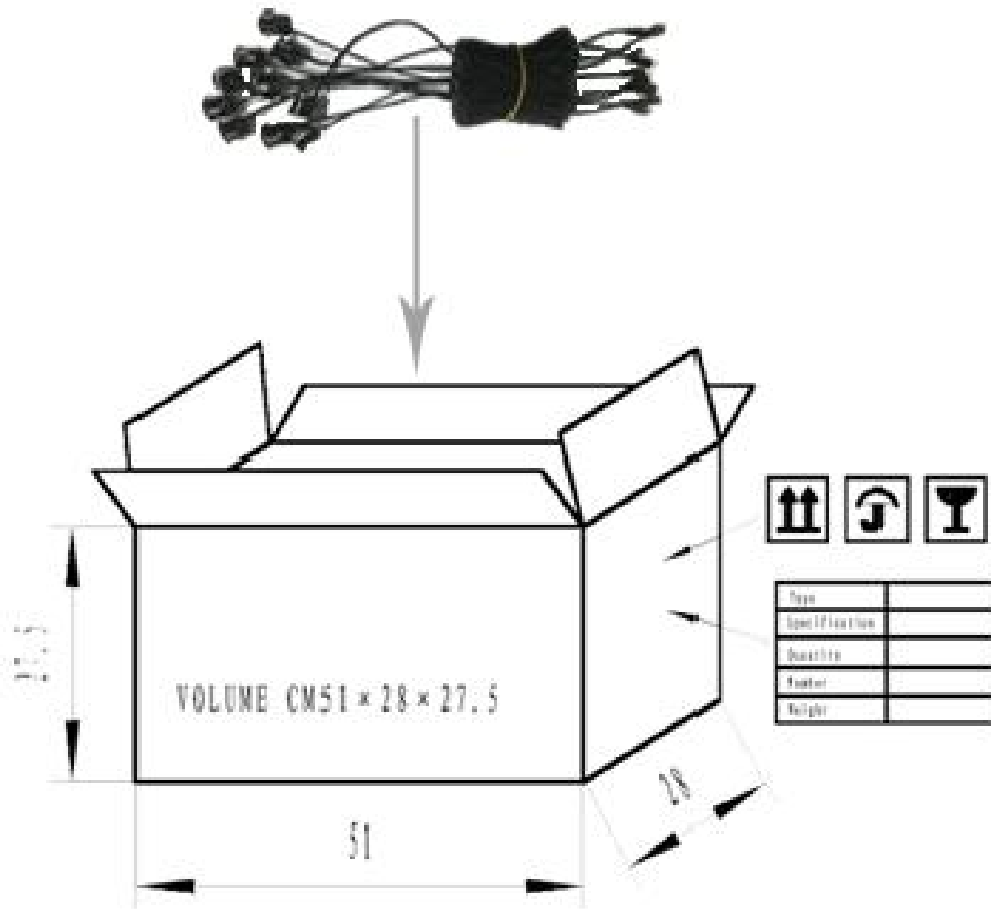
RL: $3.9K\Omega$
 U.S. :Ultrasonic Sensor
 S.C.M:Standard Cappacitor Microphone
 Amp. :Amplifier
 OSC. :Oscillator
 Sp :Tweeter
 F.C :Frequency Counter

Transmitter



U.S :Ultrasonic Sensor
 S.C.M:Standard Cappacitor Microphone
 Amp. :Amplifier
 Input voltage:10Vrms
 F.C :Frequency Counter

G. Packing



NOTES:

1. 10 PCS per box
2. Total 30 boxes per carton
3. Total 300 PCS carton
4. Volume: $51 \times 28 \times 27.5$ cm

X-ON Electronics

Largest Supplier of Electrical and Electronic Components

Click to view similar products for [Proximity Sensors](#) category:

Click to view products by [INGHAI](#) manufacturer:

Other Similar products are found below :

[70.340.1028.0](#) [70.360.2428.0](#) [8027AL20NL2CPXX](#) [9221350022](#) [922AA2W-A9P-L](#) [GL-12F-C2.5X10\(LOT3\)](#) [972AB3XM-A3P-L](#) [PS3251](#)
[980659-1](#) [E2E2-X5M41-M4](#) [E2E-X14MD1-G](#) [E2E-X2D1-G](#) [E2E-X4MD1-G](#) [E2E-X5E1-5M-N](#) [E2E-X5Y2-N](#) [EH-302](#) [EI3010TBOP](#)
[MS605AU](#) [EP175-32000](#) [IC08ANC15PO-K](#) [IFRM04P1513/S35L](#) [IFRM06P1703/S35L](#) [IFRM08P1501/S35L](#) [IFRM12N17G3/L](#)
[IFRM12P3502/L](#) [IFRM12P37G1/S14L](#) [ILFK12E9189/I02](#) [ILFK12E9193/I02](#) [OISN-013](#) [25.332.0653.1](#) [25.352.0653.0](#) [25.352.0753.0](#)
[25.523.3253.0](#) [9151710023](#) [922AA1HI-A4P-L](#) [922AA2XM-B9P-L](#) [922FS0.8-H4P-G-020](#) [922FS1.5C-A4P-Z774](#) [SC606ABV0S30](#)
[SM851A1200FP](#) [F3S-A162-U](#) [GL-12F-C2X10\(LOT10\)](#) [GL-8HIBX10](#) [QT-08L](#) [RDS-DIN3-PA-D1](#) [34.110.0010.0](#) [3U02](#) [TL-C2MF1-M3-E4](#)
[TLX5C1GE](#) [TL-X5Y1-52](#)