

inspired LED 10mm iDea Series Panels on Demand



The **iDea Series LED System** offers a variety of quick convenient solutions for designing, installing, and modifying LED systems in field. Simply cut LED flex strips to length, add connectors, lay the LEDs along an aluminum channel, and snap your choice of covers in to place. Creating custom LED fixtures has never been easier than with the innovative iDea Series LED system from Inspired LED.

Product Features:

- CSA listed (C22.2 No. 250.0-08), sleek , lightweight design
 - Compatible with range of flexible LED colors & brightness levels
 - Simple connectors allow flex to be cut & built to custom lengths
 - Frosted white or clear lens covers
 - Clip, screw, or adhesive mounting options
 - Can be weatherproofed in-field with addition of GE Lifetime Rated Silicone
- To be installed in accordance with NEC, using Class 2 power supply only**

Step 1: Cut

Select Inspired LED flex strips in the brightness level and color of your choosing, then cut to length on copper solder pads!

Mega Bright (240 ohm) 24V-MB240-XX
best for subtle accent or task lighting

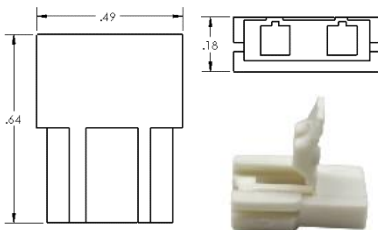
Mega Bright (100 ohm) 24V-MB100-XX
best value accent or task lighting

Mega Bright (75 ohm) 24V-MB75-XX
the very brightest task light



Step 2: Connect

Attach iDea series **end-connectors** to connect to wire



Size: 0.49" x 0.64" x 0.18"
Screw Terminal Size: Fits 18-22 AWG
SKU#: 3636 (single) 3683 (bag of 25)
Compatible with Inspired LED 24V Flex Only

1 Open connector locking cap and peel adhesive liner from flexible LED strip.



2 Insert flexible LED strip into LED input channel of connector.



3 Close locking cap until the snap of the connector is heard. The snapping sound indicates the locking cap has been properly terminated.



4 Identify polarity on LED strip. Polarity is marked throughout the length of the flexible LED strip. Use a red sharpie to mark polarity on connector.



5 Strip 18-22AWG cable and match polarity between LED connector and cable.



6 Poke cable leads into wire holes of connector making sure the positive polarity matches the positive input hole of connector.



NOTE: Connectors are not assigned polarity. Polarity must be defined by user. Look throughout the length of the strip to identify polarity, it may not be indicated exactly at each cut point. Check termination by tugging on the cable leads and LED flex to insure tight connections. Cable should be difficult to remove when properly terminated.



inspiredled.com



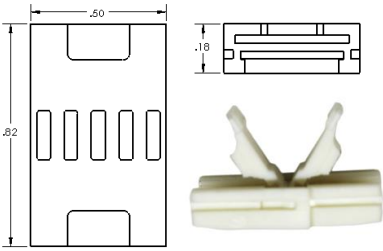
orders@inspiredled.com



(480) 941-4286

Step 2: Connect (Part II)

Attach iDea series flex-extenders to connect LED flex strips end to



Size: 0.82" x 0.5" x 0.18"
 Screw Terminal Size: Fits 18-22 AWG
 SKU#: 3637 (single) 3684 (bag of 5)
 Compatible with Inspired LED 24V Flex Only

1 To connect LED flex strips end-to-end, begin by matching polarity between joining LED strips



3 Assign polarity on flex-extender using a red pen



2 Open locking caps on each side of flex-extender



4 Insert LED flex into either side of flex-extender, matching polarity, then firmly snap each end shut, using pliers if needed

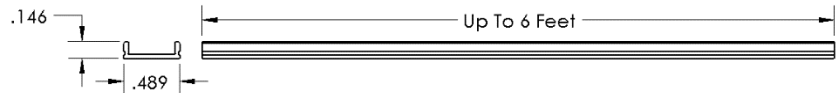


Step 3: Panelize

Create an on-demand fixture in just minutes using aluminum extrusion and snap-on lenses

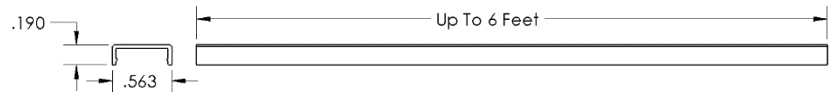
1 Aluminum Channel (6'): 3606

Lay flex along aluminum channel with end connectors hanging over edge & cut to length



2 Polycarbonate Covers (6'): 3633

Snap cover over aluminum & end connectors, cut to length

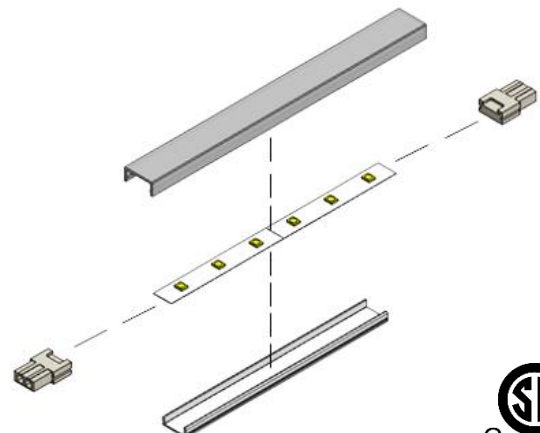
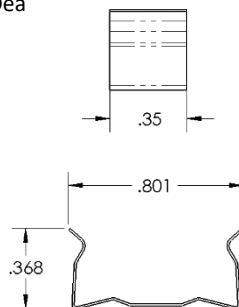


White 3633-W

Clear 3633-C

3 Mounting Clips/Screws (10/bag): 3687

Screw into desired location, then secure iDea series panel in place



CSA®
 C US
 265216



inspiredled.com



orders@inspiredled.com



(480) 941-4286

X-ON Electronics

Largest Supplier of Electrical and Electronic Components

Click to view similar products for [LED Lighting Mounting Accessories](#) category:

Click to view products by [Inspired LED](#) manufacturer:

Other Similar products are found below :

[C16142_HEKLA-SOCKET-K](#) [3SU1401-1BG20-1AA0](#) [3SU1401-1BH60-1AA0](#) [3SU1900-0BC31-0NB0](#) [ES16-RT](#) [1SFA616921R2042](#)
[1SFA616921R2131](#) [1SFA616921R2133](#) [1SFA616921R2143](#) [1SFA611621R1093](#) [B8910020](#) [D3980022](#) [E3990022](#) [E3990040](#) [CABI12 E BK](#)
[1M SET PRM](#) [FLAT8 H/U BK 1M SET PRM](#) [BEGTIN12 J/S BK 1M SET PRM](#) [1-2213678-6](#) [C16791_CLAMP-Z45-A](#) [F17250_SOLDER-](#)
[CLIP-A](#) [2213831-3](#) [CM22-4-20MA](#) [CM22-R10K-MT](#) [CM22-R1K](#) [CM22-R50K](#) [CM22-R5K-MT](#) [10465](#) [M22-A](#) [M22-CK11](#) [M22-CK20](#)
[M22G-XGPV](#) [M22-K01](#) [M22-LCH-W](#) [M22-LC-R](#) [M22-LED230-R](#) [M22-LED230-W](#) [M22-LEDC230-G](#) [M22-LEDC-G](#) [M22-LEDC-W](#)
[M22-LED-G](#) [M22-LED-W](#) [M22-L-G](#) [M22-LH-G](#) [M22-LH-R](#) [M22-LH-W](#) [M22-L-R](#) [M22-L-W](#) [M22-L-X](#) [M22-MS](#) [M22-R10K](#)