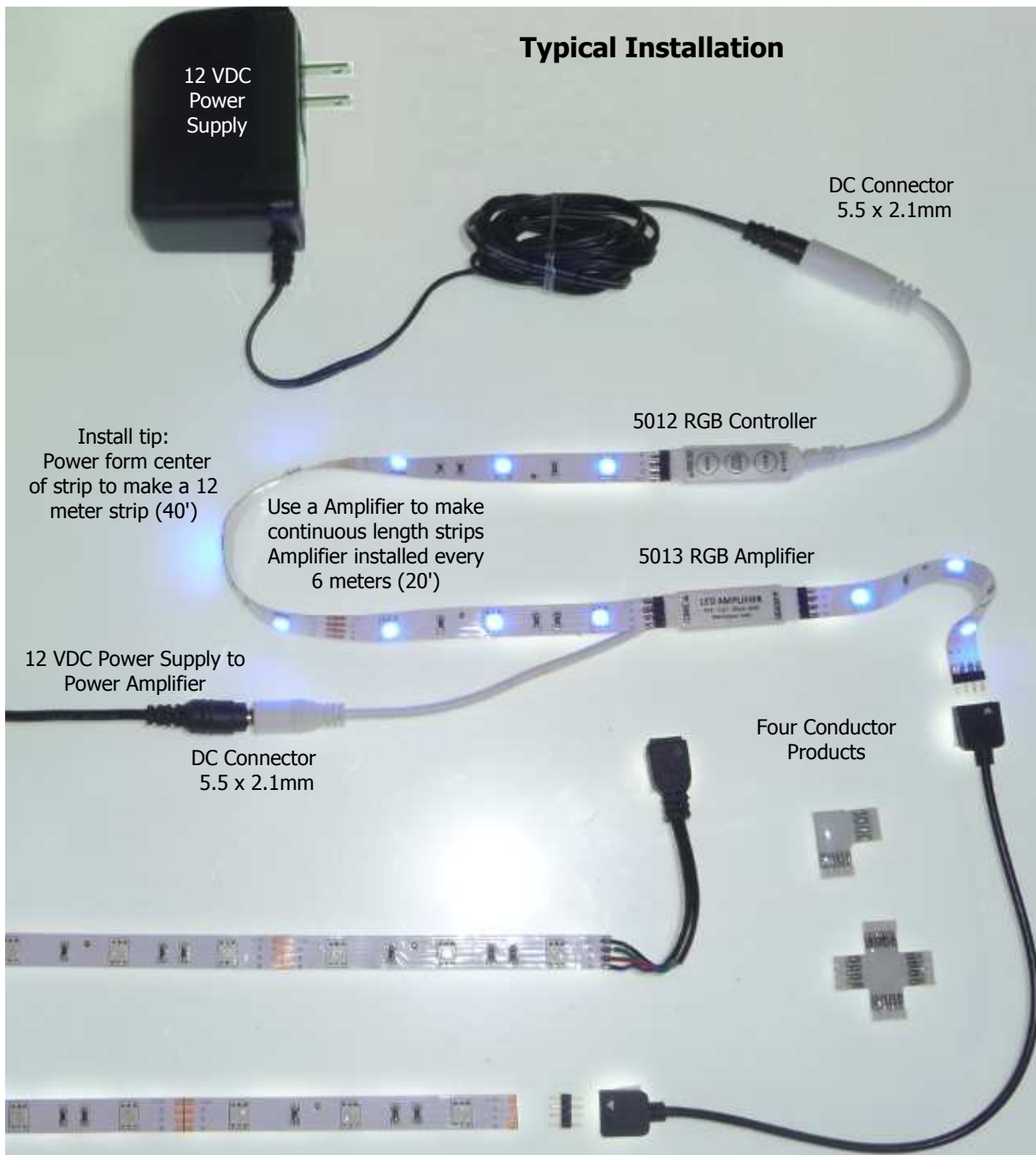


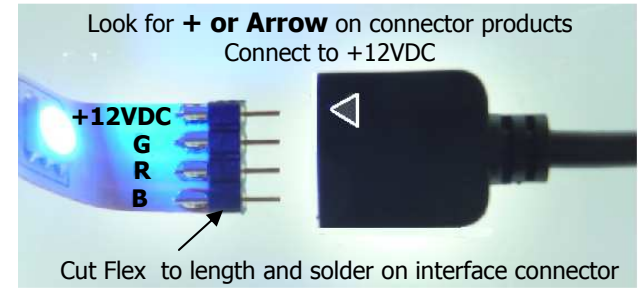
Typical Installation



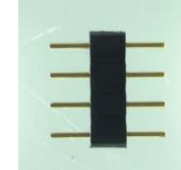
Install tip:
Power form center
of strip to make a 12
meter strip (40')

Use a Amplifier to make
continuous length strips
Amplifier installed every
6 meters (20')

Four Conductor Cable Options



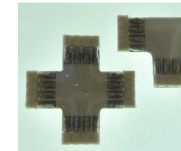
Interface Connector



Solder to Flex Strip or use to connect
Interconnect Cables and Controllers

5001- Bag of 100
5002- Bag of 6

Junction Blocks



5003- Right Angle Block
5004- four way angle Block

Four Conductor Interconnect Cables



5005- 20 cm 26AWG
5006- 100 cm 26AWG
5007- 250 cm 26AWG

5008- 20 cm 22AWG
5009- 100 cm 22AWG
5010- 250 cm 22AWG



Controller Cable

Solder to Flex Strip or use connect
to Controller products

5011- 20 cm 22AWG

X-ON Electronics

Largest Supplier of Electrical and Electronic Components

Click to view similar products for [Lighting Connectors](#) category:

Click to view products by [Inspired LED](#) manufacturer:

Other Similar products are found below :

[293300-7](#) [293660-5](#) [CNX_H03_NTP](#) [30-9767-BU](#) [3605](#) [3-21030-1](#) [ZCH-110-RGB-I](#) [503471-0290](#) [ZCH-110-RGB-J](#) [217-0716-200](#)
[1954563-1](#) [1-293657-2](#) [2834036-1](#) [2834037-1](#) [1-2213222-4](#) [2-2213222-4](#) [2213222-4](#) [2834122-3](#) [2834122-5](#) [2834135-2](#) [FLA-R4142-30](#)
[FLA-R4162-30](#) [FLA-R2142-30](#) [FLA-R2162-30](#) [FLA-R2161-30](#) [FLA-R0161-30](#) [FLA-R0141-30](#) [FLA-R0142-30](#) [FLA-R0162-30](#) [FLA-C00-](#)
[00](#) [DGA00010553](#) [CNXV04NTP](#) [104128-0610](#) [503485-0000 \(Cut Strip\)](#) [503485-0000 \(Loose Piece\)](#) [503485-0000 \(MINI Reel\)](#) [1-2834074-2](#)
[1-2834074-3](#) [1357-AC PLUG W2C \(CHINA\)](#) [1357-AC PLUG W2 \(USA\)](#) [104266-0110](#) [CNXV02NTP](#) [2106212-1](#) [2-2834074-2](#) [104266-](#)
[0210](#) [293470-1](#) [293651-2](#) [293651-4](#) [1-2834006-2](#) [293651-1](#)