



Inspired LED's **Clear Mounting Clips** pair with our Infinity Series Weather Resistant LED Dura-flex, allowing it to be securely installed in a variety of locations. The clear mounting clips screw into flat surfaces, providing additional support for the Infinity Dura-flex.

SKU #CLEAR

Product Features:

Clear plastic bridge clips over Infinity Dura-flex, serrated underside to prevent slippage, screw hole on either side for mounting

Sold in packs of 10, includes 20 screws

Specifications:

External Dimensions-

0.40" x 0.40" x 1.36"

Internal Dimensions-

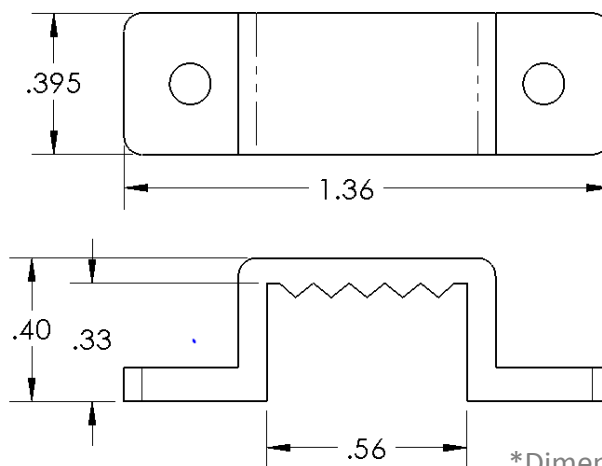
0.55" x 0.32"

Screw Hole- 0.1"

Net Weight- 1g (ea)

Instructions:

1. Assemble Infinity Series LED system according to its instructions. Temporarily mount in place using masking or painter's tape.
2. Once satisfied with the placement of LEDs, use a bead of outdoor rated adhesive or silicone along the backside of Infinity Dura-flex to mount permanently in place, leaving tape up for support until glue has dried.
3. Install clear mounting clips over Infinity Dura-flex by screwing into place every few feet as needed for additional support.



*Dimensions shown in inches

X-ON Electronics

Largest Supplier of Electrical and Electronic Components

Click to view similar products for [LED Lighting Mounting Accessories](#) category:

Click to view products by [Inspired LED](#) manufacturer:

Other Similar products are found below :

[C16142_HEKLA-SOCKET-K](#) [3SU1401-1BG20-1AA0](#) [3SU1401-1BH60-1AA0](#) [3SU1900-0BC31-0NB0](#) [ES16-RT](#) [1SFA616921R2042](#)
[1SFA616921R2131](#) [1SFA616921R2133](#) [1SFA616921R2143](#) [1SFA611621R1093](#) [B8910020](#) [D3980022](#) [E3990022](#) [E3990040](#) [CABI12 E BK](#)
[1M SET PRM](#) [FLAT8 H/U BK 1M SET PRM](#) [BEGTIN12 J/S BK 1M SET PRM](#) [1-2213678-6](#) [C16791_CLAMP-Z45-A](#) [F17250_SOLDER-](#)
[CLIP-A](#) [2213831-3](#) [CM22-4-20MA](#) [CM22-R10K-MT](#) [CM22-R1K](#) [CM22-R50K](#) [CM22-R5K-MT](#) [10465](#) [M22-A](#) [M22-CK11](#) [M22-CK20](#)
[M22G-XGPV](#) [M22-K01](#) [M22-LCH-W](#) [M22-LC-R](#) [M22-LED230-R](#) [M22-LED230-W](#) [M22-LEDC230-G](#) [M22-LEDC-G](#) [M22-LEDC-W](#)
[M22-LED-G](#) [M22-LED-W](#) [M22-L-G](#) [M22-LH-G](#) [M22-LH-R](#) [M22-LH-W](#) [M22-L-R](#) [M22-L-W](#) [M22-L-X](#) [M22-MS](#) [M22-R10K](#)