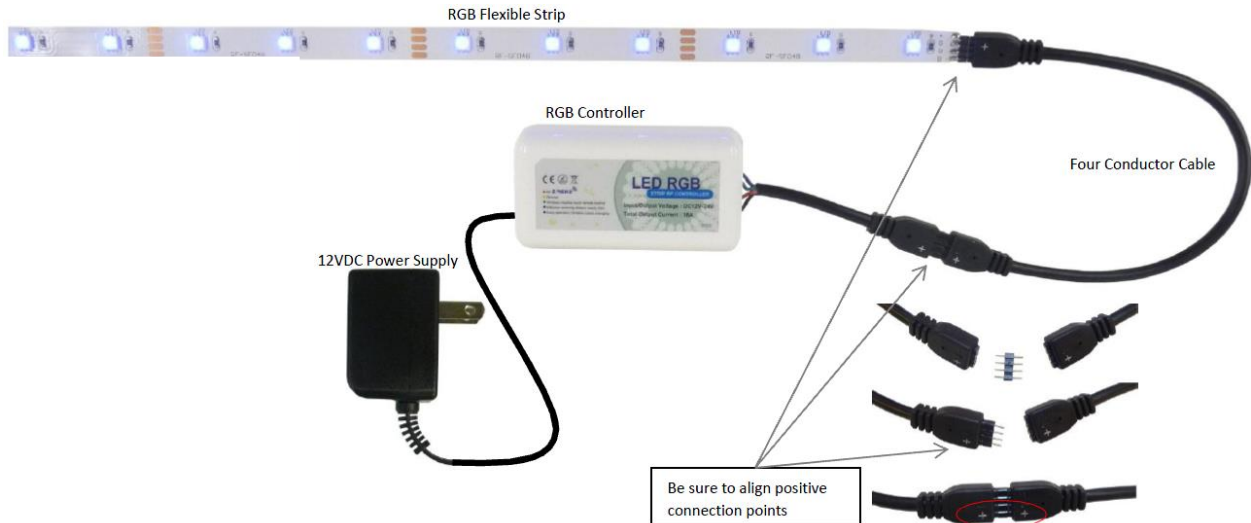


# RGB LED Strip from Inspired LED



- Select the perfect color to match your mood from a wide array of over 64,000 potential colors.
  - Requires one of our RGB Controllers.
  - Requires four conductor interconnect cables.
- Powered by 12V DC.
- 3M adhesive backed strips for fast, easy installation.
- Very low profile lighting:
  - 0.5” wide
  - 0.1” high
- Cut strips to custom lengths in increments of 4 inches.
  - For pricing and available lengths, see drop down menu on product web page.
  - Available in 12 meter reels.
- 30 LED’s per meter.
  - LED spacing of 1.3”
- LED lifespan rated to 50,000 hours.
- Low energy consumption, 7.2 watts per meter.
- No UV radiation.
- Accord with European Union CE, RoHS directive.
- Caution: bending strips to a radius of curvature less than 15mm risks damage to internal circuit traces.

RGB Technical Data			
Color	Red	Green	Blue
Number of LEDs per Meter	30		
Operating Voltage (V DC)	12		
Power per Meter (W/m)	7.2		
Current per Meter (A/m)	0.6		
Viewing Angle (°)	120		
Wavelength (nm)	625	565	465
Luminosity (lm)	19	75	24



## X-ON Electronics

Largest Supplier of Electrical and Electronic Components

*Click to view similar products for [LED Lighting Bars and Strips](#) category:*

*Click to view products by [Inspired LED](#) manufacturer:*

Other Similar products are found below :

[ZLF0310W62524](#) [LF1D-F2F-2W-300](#) [HH-SWW528F210W12-COB IP65](#) [HH-SG528F010W24-COB IP20](#) [LF2D-EN2F-2W-A](#) [10001622](#)  
[LFBHL-SW860-24V-8S63-20](#) [LFBHL-SW940-24V-8S63-20](#) [HH-SRGB60F010W24-5050M](#) [N006120BB1LZ \(GREEN\)](#) [N006120BB1LZ](#)  
[\(ICE BLUE\)](#) [N006120BB1LZ \(RED\)](#) [N006120BC1LZ \(BLUE\)](#) [N006120BC1LZ \(GREEN\)](#) [N006120BC1LZ \(RED\)](#) [RF-G27HI3510-](#)  
[241202081-A0 IP20](#) [S010030CB3SB7](#) [S010030CB3SB7 \(BLACK PCB\)](#) [S010060CB1LZ \(NEUTRAL WHITE IP65\)](#) [S010060CB1LZ](#)  
[\(WARM WHITE IP65\)](#) [S010060CB3SB7](#) [S010060CC1LZ \(WARM WHITE IP65\)](#) [S012060CB4ST \(BLACK PCB\)](#) [L202-3080033C30001](#)  
[00219015](#) [10001611](#) [10001612](#) [10001613](#) [10001617](#) [10001619](#) [10001623](#) [10001655](#) [10001657](#) [10001661](#) [10001664](#) [10001670](#) [10001674](#)  
[10001675](#) [10001681](#) [10001683](#) [10001690](#) [PUUA-100LLL-NK2P](#) [QAUR1161L030](#) [HC-F12V-3535 PCBA](#) [HC-F12V-F50-3L-WS2811](#) [HC-](#)  
[F12V-WS2811-3535](#) [HC-F5V-144L-144LED-B-WS2813 IP65](#) [HC-F5V-144L-144LED-W/IP65](#) [HC-F5V-144L-144LED-W-WS2813 IP20](#)  
[HC-F5V-30L-30LED-B-WS2813 IP20](#)