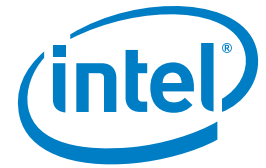


PRODUCT BRIEF

Intel® True Scale Fabric %&&\$ \$'Gk jhW

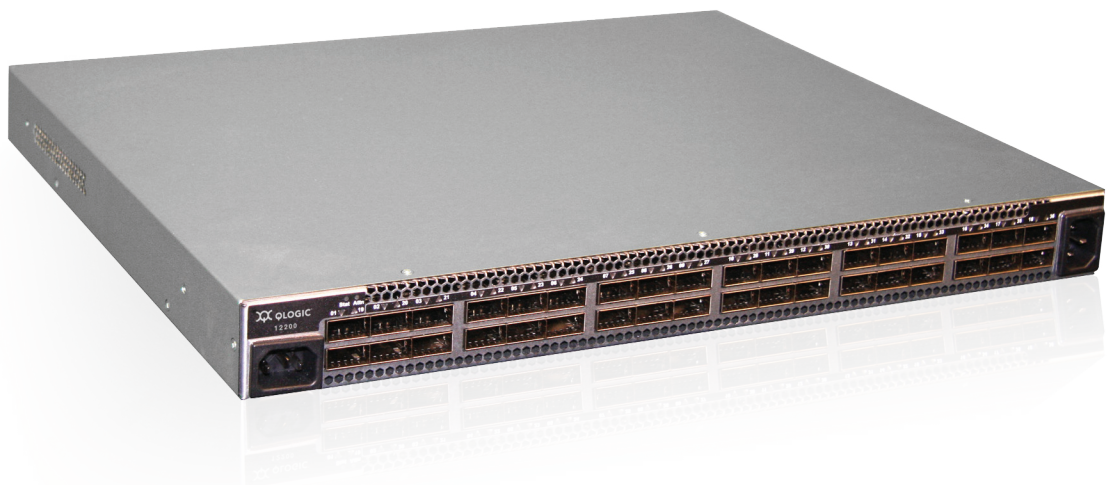


Intel® True Scale Fabric 12200 Switch

36-Port 40Gbps Switch, Managed, Fixed Configuration

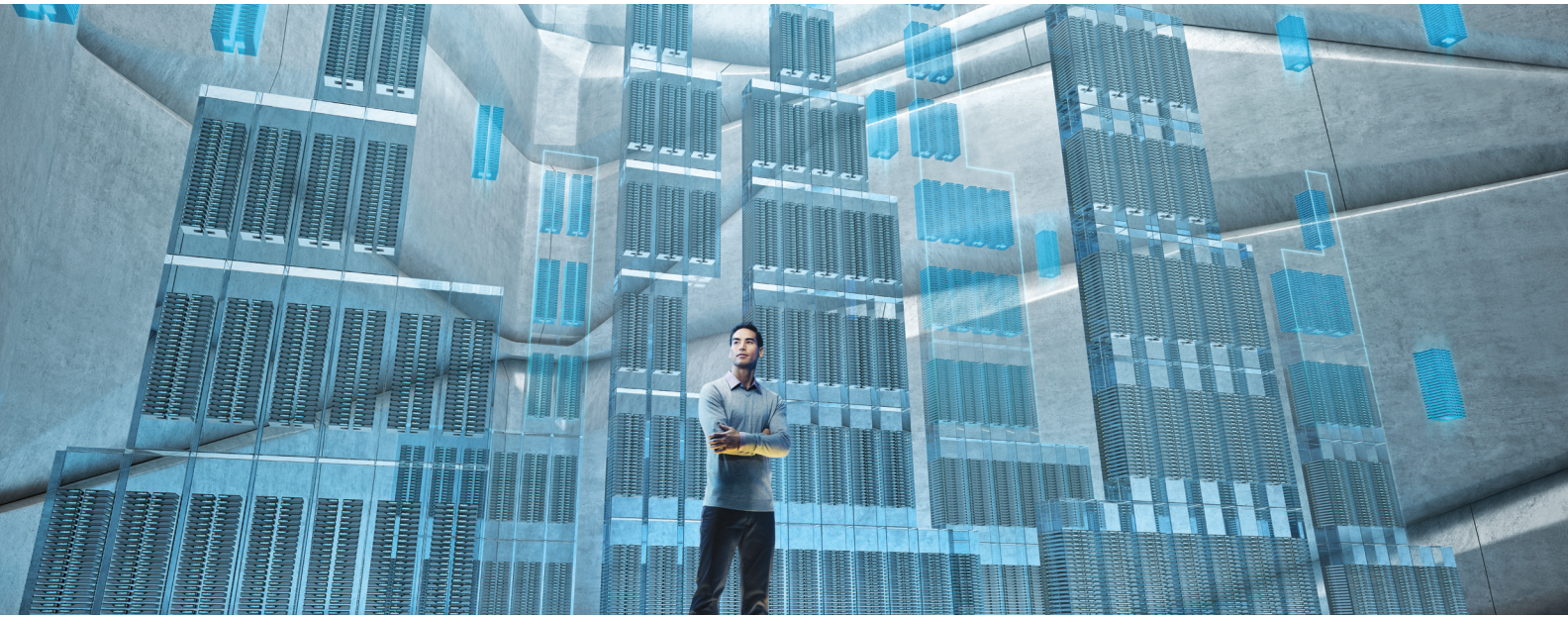
Overview

The Intel® 12200 is a 36-port, 40Gbps switch based on InfiniBand* architecture that cost-effectively supports a cluster of up to 36 servers, or provides an edge switch option for a larger fabric. This fixed-configuration switch is a member of the 12000 series, which delivers an exceptional set of high-speed networking features and functions.



Highlights

- 36 ports of InfiniBand* QDR-40Gbps performance
- 2.88Tbps aggregate bandwidth
- Intel® True Scale Architecture, with scalable, predictable low latency
- Multiple Virtual Lanes (VLs) per physical port
- Supports virtual fabric partitioning
- Small QDR data center footprint with cost-effective edgeport density
- Chassis and fabric management through optional embedded management module or Intel® Fabric Suite (IFS) management solution that provides an expanded set of fabric views and fabric tools
- RoHS 6 compliant
- Minimal power and cooling requirements
- Complies with InfiniBand Trade Association* (IBTA*) v1.2 standard



Benefits

- QDR line rate performance
- Ultra-low latency under heavy loads
- Flexible quality of service (QoS) maximizes bandwidth use
- Protects existing InfiniBand investments
- Highly reliable and available
- Easy to manage
- Minimal power and cooling requirements

Low Latency

Intel's 12200 switch provides scalable and predictable low latency, even when operating at 90 percent of bandwidth. Predictable latency means HPC applications can scale without diminished cluster performance or costly system tuning efforts.

Flexible Partitioning

The Intel 12200 advanced design is based on an architecture that provides a comprehensive set of virtual fabric partitioning features that enable the InfiniBand* fabric to support the evolving requirements of an organization. The Intel® True Scale Architecture, together with IFS, allows mission-critical applications to share the fabric, while maximizing bandwidth.

Investment Protection

The 12200 Series switch products adhere to the IBTA* version 1.2 specification, which ensures interoperability with all IBTA* compliant devices.

Highly Reliable

The highly available 12200 switch design integrates state-of-the-art fault detection and recovery capabilities.

Easy to Manage

The 12200 switch takes advantage of Intel's advanced IFS software for fast installation and configuration. IFS has tools that automate and accelerate cluster installation, verification, and administration for both hosts and switches. IFS integrates easily with existing network management tools, and has comprehensive reports that supply a wide range of details about the environment.

Power Optimized

Maximum performance is delivered with minimal power and cooling requirements as part of Intel's commitment to developing green solutions for the data center.

Switch Options

- 12200-BS01: 36 ports, single power supply
 - 12200-BS23: 36 ports, dual power supply
 - 12200-BS01-MM: 36 ports, single power supply, embedded management module
 - 12200-BS23-MM: 36 ports, dual power supply, embedded management module
-

Switch Specifications

- 40/20/10Gbps auto-negotiation links
 - Thirty-six 4X QDR ports or eighteen 8X QDR ports
 - Switching capacity: 2.88Tbps
 - VLS: Eight plus one management
 - Maximum MTU size: 4096 bytes
 - Maximum multicast table size: 1024 entries
 - Supports QSFP transceivers, and optical and copper cable specifications
-

Interoperability

Compliant with IBTA* 1.0a, 1.1, and 1.2

Fabric Management

Management Methods

- Optional external server-based IBTA*-compliant Subnet Manager (SM)
- Optional embedded fabric management
- IBTA*-compliant Subnet Management Agent (SMA) and Performance Management Agent (PMA)

LEDs

- One per InfiniBand* port
 - Two for InfiniBand* switch status
-

Physical Specifications

Dimensions

- H x W x D: 43.2 x 439.6 x 362.5 mm
(1.7 x 17.3 x 14.5 in)

Weight

- 6.8kg (15lbs)
-

Environmental Specifications

Operating

- 0° – 40°C
- Humidity: 5–85 percent non-condensing
- Altitude: 0–10,000 feet
- Vibration: 5–500Hz, 0.27g, 5 sweeps
- Shock: 3.5g, 3ms, half sine, 20 repetitions

Electrical

- Voltage: 100–240 VAC, 50–60Hz
- Power Consumption: 85–226W

Non-operating

- -40° – 65°C
- Humidity: 5–90 percent non-condensing
- Altitude: 0–40,000 feet
- Vibration: 2–200Hz, 0.5g, 5 sweeps
- Shock: 50g, 4216mm/s, 13msec, 3-axis

Airflow

- Front-to-back; back-to-front for selected OEMs

INFORMATION IN THIS DOCUMENT IS PROVIDED IN CONNECTION WITH INTEL® PRODUCTS. NO LICENSE, EXPRESS OR IMPLIED, BY ESTOPPEL OR OTHERWISE, TO ANY INTELLECTUAL PROPERTY RIGHTS IS GRANTED BY THIS DOCUMENT. EXCEPT AS PROVIDED IN INTEL'S TERMS AND CONDITIONS OF SALE FOR SUCH PRODUCTS, INTEL ASSUMES NO LIABILITY WHATSOEVER AND INTEL DISCLAIMS ANY EXPRESS OR IMPLIED WARRANTY, RELATING TO SALE AND/OR USE OF INTEL PRODUCTS INCLUDING LIABILITY OR WARRANTIES RELATING TO FITNESS FOR A PARTICULAR PURPOSE, MERCHANTABILITY, OR INFRINGEMENT OF ANY PATENT, COPYRIGHT OR OTHER INTELLECTUAL PROPERTY RIGHT.

A "Mission Critical Application" is any application in which failure of the Intel Product could result, directly or indirectly, in personal injury or death. SHOULD YOU PURCHASE OR USE INTEL'S PRODUCTS FOR ANY SUCH MISSION CRITICAL APPLICATION, YOU SHALL INDEMNIFY AND HOLD INTEL AND ITS SUBSIDIARIES, SUBCONTRACTORS AND AFFILIATES, AND THE DIRECTORS, OFFICERS, AND EMPLOYEES OF EACH, HARMLESS AGAINST ALL CLAIMS COSTS, DAMAGES, AND EXPENSES AND REASONABLE ATTORNEYS' FEES ARISING OUT OF, DIRECTLY OR INDIRECTLY, ANY CLAIM OF PRODUCT LIABILITY, PERSONAL INJURY, OR DEATH ARISING IN ANY WAY OUT OF SUCH MISSION CRITICAL APPLICATION, WHETHER OR NOT INTEL OR ITS SUBCONTRACTOR WAS NEGLIGENT IN THE DESIGN, MANUFACTURE, OR WARNING OF THE INTEL PRODUCT OR ANY OF ITS PARTS.

Intel may make changes to specifications and product descriptions at any time, without notice. Designers must not rely on the absence or characteristics of any features or instructions marked "reserved" or "undefined". Intel reserves these for future definition and shall have no responsibility whatsoever for conflicts or incompatibilities arising from future changes to them. The information here is subject to change without notice. Do not finalize a design with this information.

The products described in this document may contain design defects or errors known as errata which may cause the product to deviate from published specifications. Current characterized errata are available on request. Contact your local Intel sales office or your distributor to obtain the latest specifications and before placing your product order.

Copies of documents which have an order number and are referenced in this document, or other Intel literature, may be obtained by calling 1-800-548-4725, or go to: <http://www.intel.com/design/literature.htm>

© 2012, Intel Corporation. All rights reserved. Intel and the Intel logo are trademarks of Intel Corporation in the U.S. and/or other countries.

*Other names and brands may be claimed as the property of others.

0312/LM/CMD/PDF

327084-001US



X-ON Electronics

Largest Supplier of Electrical and Electronic Components

Click to view similar products for [Ethernet ICs](#) category:

Click to view products by [Intel](#) manufacturer:

Other Similar products are found below :

[12200BS23MM](#) [DSL4510 S R15X](#) [BCM53115MIPBG](#) [BCM53115SIPB](#) [BCM54616C0KMLG](#) [BCM5461A1KPFG](#) [BCM5461SA1IPFG](#)
[BCM5461SA3KFBG](#) [BCM54640EB2KFBG](#) [BCM5464SA1IRBG](#) [SBL2ECHIP-236IR](#) [BCM54210B0KMLG](#) [BCM54612EB1KMLG](#)
[BCM8727MCIFBG](#) [KSZ8091RNDCA-TR](#) [LA2333T-TLM-E](#) [VSC7421XJQ-02](#) [VSC8522XJQ-02](#) [LAN91C93I-MU](#) [WGI219LM SLKJ3](#)
[VSC7389XHO](#) [78Q2133S/F](#) [BCM5325EKQMG](#) [BCM54210EB1IMLG](#) [BCM54220B0KFBG](#) [BCM5720A0KFBG](#) [BCM54220SB0KFBG](#)
[BCM54220SB0KQLEG](#) [MAX3956AETJ+](#) [KSZ8441FHLI](#) [BCM53262MIPBG](#) [BCM54640EB2IFBG](#) [BCM5461SA1KPFG](#)
[BCM53402A0IFSBG](#) [KSZ8091MNXCA](#) [JL82599ES S R1VN](#) [BCM53125MKMMLG](#) [F104X8A](#) [VSC7511XMY](#) [VSC7418XKT-01](#)
[VSC7432YIH-01](#) [WGI219V SLKJ5](#) [BCM84793A1KFSBG](#) [BCM56680B1KFSBLG](#) [FTX710-BM2 S LLKB](#) [88E3082-C1-BAR1C000](#)
[WGI210CS S LKKL](#) [BCM56450B1IFSBG](#) [BCM56960B1KFSBG](#) [EZX557AT2 S LKVX](#)