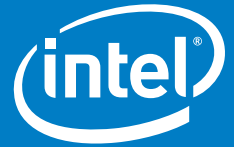


PRODUCT BRIEF

Intel® Compute Stick
STCK1A32WFC
STCK1A8LFC



We shrunk the package, not the performance.

Transform
where and how
you compute



In the office, computer lab, or at home, the Intel® Compute Stick gives you the power to work anywhere there is an HDMI* display.

The Intel® Compute Stick is a new standard for stick computing devices that enables you to transform a display into a fully functional computer. Just plug the Intel Compute Stick into any HDMI* TV or monitor, connect your wireless keyboard and mouse and you're ready to stream media, work, or play games. The built-in WiFi and on-board storage enables you to be productive immediately. We mean it when we say ready to go out-of-the box.

A cost-effective computer for home, business, and PC-like embedded applications, the Intel Compute Stick is small enough to fit in the palm of your hand, yet big enough for a quad-core Intel® Atom™ processor and your choice of operating systems: Windows 8.1* or Linux* Ubuntu. The Intel Compute Stick delivers a Mini PC with full-size performance, reliability, and ease of use so you can work when, where, and how you want. It's the quality and value you've come to expect from Intel in a product designed and built by the company itself.





Anywhere you have a TV, you also have a Windows*-based computer

Plug the innovative form factor into an HDMI port on a television or display, connect a wireless keyboard and mouse, and you have a fully functional, Windows 8.1-based system. The compute stick has the performance you need to stream media, edit photos and files, or create projects. You can store your files locally for quick access or use the built-in wireless to access files from your home network and from the cloud. The quad-core Intel Atom processor gives you enough performance for casual gaming and there's also a USB port to connect your peripherals.

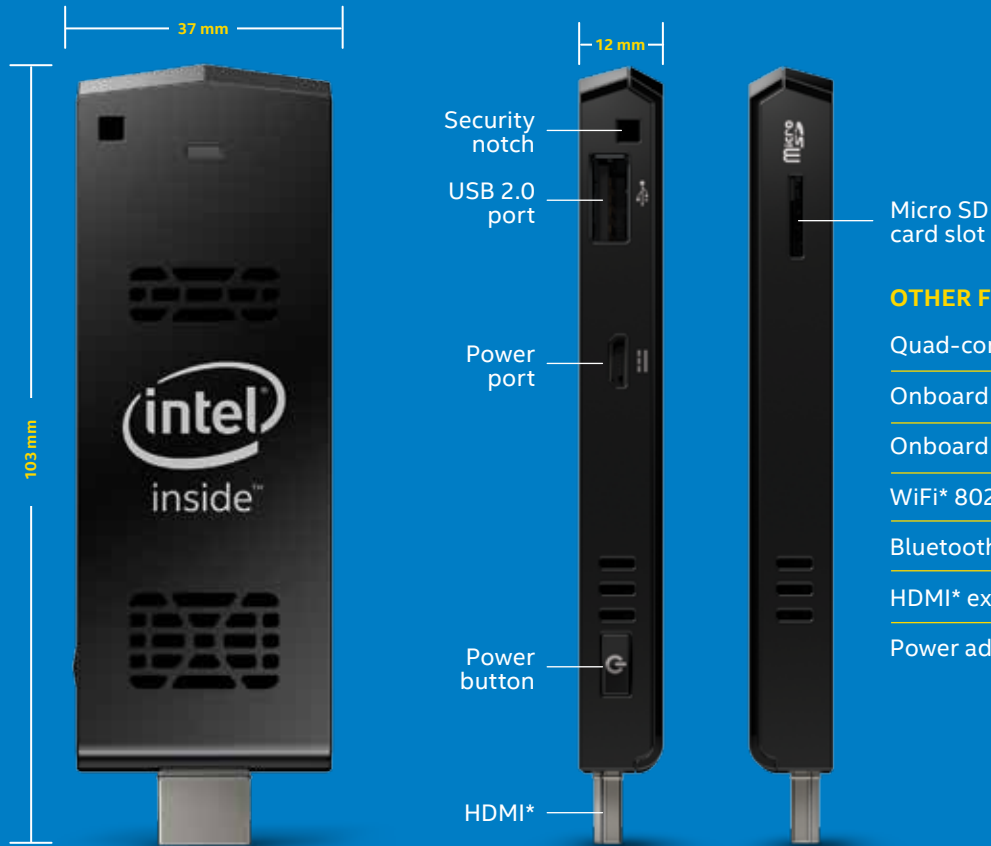


Plug, play, and produce: Linux*-based computer makes collaboration at work simple

The Intel Compute Stick with Ubuntu has all the performance you need for running thin client, embedded, collaboration, or cloud applications. The compute stick makes it easy to stay productive whether you're in the office, a conference room, or moving from desk to desk in the workplace. 8 GB of onboard storage means that no matter where you go, your system and your files are with you. And with the included micro SD card slot, you get the option of additional storage, allowing you to access even more files quickly and easily. And you don't need to worry about theft, either. The compute stick has a security notch for securing to objects with a cable, ensuring that your device moves only when you want it to.



Intel® Compute Stick: Features at a glance



OTHER FEATURES INCLUDE:

Quad-core Intel® Atom™ processor

Onboard storage

Onboard memory

WiFi* 802.11bgn

Bluetooth* 4.0

HDMI* extension cable

Power adapter with USB cable



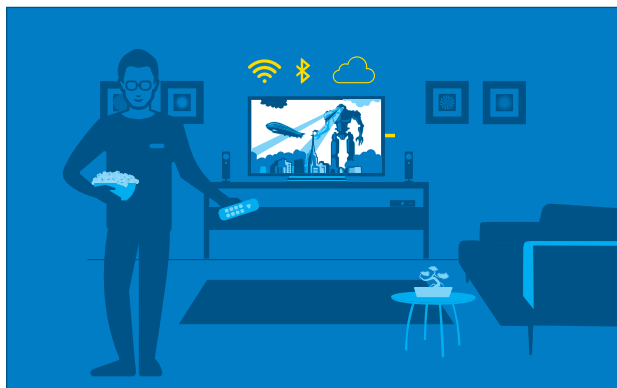
Optimized design for full performance

Intel relentlessly innovates to bring you technology that helps you meet your computing needs. The innovative design of the Intel Compute Stick is fully optimized to allow you to maximize the performance of the quad-core Intel Atom processor for games, videos, spreadsheets, or presentations. In the kitchen, den, or office, your system and your files are with you, making it easy to work when, where, and how you want.

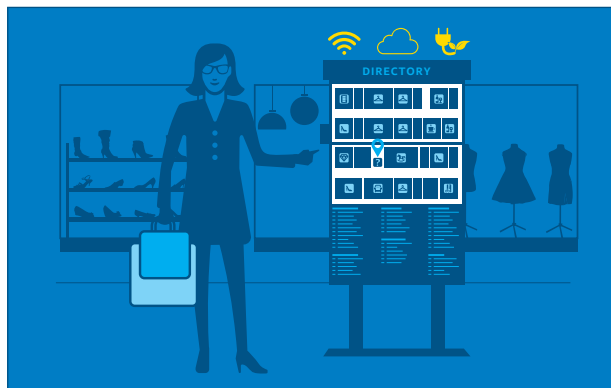
**Intel Compute Stick. Connect. Compute.
It's that simple.**

Look for Intel® Compute Stick
with Intel Inside® at
www.intel.com/ComputeStick

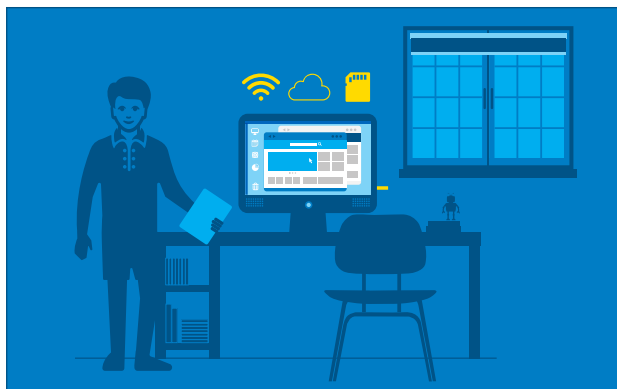
Intel® Compute Stick: Usage Models



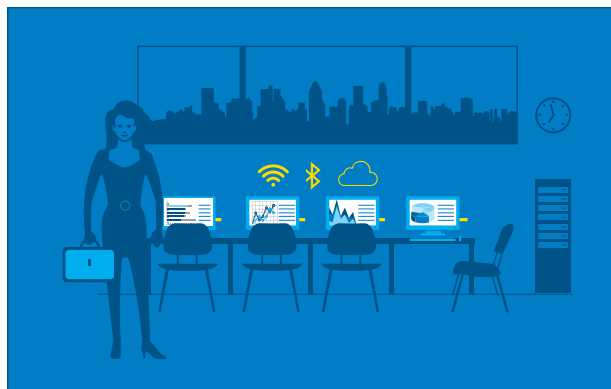
HOME ENTERTAINMENT



PC-LIKE EMBEDDED



PRODUCTIVITY



THIN CLIENT

TECHNICAL SPECIFICATIONS

Intel® Compute Stick STCK1A32WFC, STCK1A8LFC

PROCESSOR

- Intel® Atom™ Processor Z3735F
- Supports Intel® Virtualization Technology (Intel® VT-x)

GRAPHICS

- Intel® HD Graphics
- 1x HDMI* 1.4a

SYSTEM MEMORY

- **Windows***: 2 GB soldered, single channel, DDR3L memory
- **Ubuntu***: 1 GB soldered, single channel, DDR3L memory
- 1.35V, 1333 MHz

STORAGE CAPABILITIES

- **Windows**: 32 GB eMMC device built-in
- SDXC v3.0 slot with UHS I-Support
- **Ubuntu**: 8 GB eMMC device built-in
- SDXC v3.0 slot with UHS I-Support

PERIPHERAL CONNECTIVITY

- Integrated 802.11bgn Wireless Connection
- One USB 2.0
- Bluetooth* 4.0
- Micro SD card slot

AUDIO

- Intel® HD Audio¹ via HDMI, supporting multi-channel digital audio

MECHANICAL CHASSIS SIZE

- 103 mm x 37 mm x 12 mm

POWER REQUIREMENTS

- 5V, 2A wall-mount AC-DC power adapter

ENVIRONMENT OPERATING TEMPERATURE

- 0° C to +35° C

STORAGE TEMPERATURE

- -20° C to +60° C

¹ Intel technologies' features and benefits depend on system configuration and may require enabled hardware, software or service activation. Performance varies depending on system configuration. No computer system can be absolutely secure. Check with your system manufacturer or retailer or learn more at www.intel.com.

INFORMATION IN THIS DOCUMENT IS PROVIDED IN CONNECTION WITH INTEL® PRODUCTS. NO LICENSE, EXPRESS OR IMPLIED, BY ESTOPPEL OR OTHERWISE, TO ANY INTELLECTUAL PROPERTY RIGHTS IS GRANTED BY THIS DOCUMENT. EXCEPT AS PROVIDED IN INTEL'S TERMS AND CONDITIONS OF SALE FOR SUCH PRODUCTS, INTEL ASSUMES NO LIABILITY WHATSOEVER, AND INTEL DISCLAIMS ANY EXPRESS OR IMPLIED WARRANTY, RELATING TO SALE AND/OR USE OF INTEL PRODUCTS INCLUDING LIABILITY OR WARRANTIES RELATING TO FITNESS FOR A PARTICULAR PURPOSE, MERCHANTABILITY, OR INFRINGEMENT OF ANY PATENT, COPYRIGHT, OR OTHER INTELLECTUAL PROPERTY RIGHT.

Intel products are not intended for use in medical, life-saving, or life-sustaining applications. Intel may make changes to specifications and product descriptions at any time, without notice.

All products, dates, and figures specified are preliminary based on current expectations, and are subject to change without notice. Availability in different channels may vary.

Actual Intel® Compute Stick may differ from the image shown.



X-ON Electronics

Largest Supplier of Electrical and Electronic Components

Click to view similar products for [Embedded Box Computers](#) category:

Click to view products by [Intel](#) manufacturer:

Other Similar products are found below :

[tBOX312-870-FL-i7-DC](#) [tBOX313-835-FL-RJ-DC](#) [UPOS-3150-R0W0E](#) [ARK-20-S8A1E](#) [R2224WTTYSR](#) [BXNUC9i5QNX](#)
[BXNUC9i5QNX1](#) [BKNUC9V7QNX](#) [BKNUC9V7QNX1](#) [2-A0DF-2001](#) [BKCMB1ABB](#) [BKCMB1ABA](#) [EM3000-3845-8-128-WL-U-1](#)
[TANK-870AI-i5/8G/2A-R10](#) [PRFE21000038](#) [EM5000-I3-8-128-WL-W7-1](#) [EM3000-3845-8-128-WL-W7-1](#) [PRFE21000039](#) [AMOS-825-](#)
[1Q10A1](#) [UPS-EDAI-X70864-U01-DC01](#) [UPX-EDGEI7-A10-1664-F01](#) [MXE-211/M8G](#) [PXIe-3985/M16G](#) [PXIe-3987/M16G/SSD](#)
[ROScube-I, IntelR Core? i7, RQI-57](#) [AIMB-T1215DA-00Y0E](#) [AIMB-T1217DW-00Y0E](#) [AIMB-T12315A-00Y0E](#) [AMAX-5580-54000A](#)
[APAX-5580-474AE](#) [ARK-6322-Q0A2E](#) [DS-100GF-S8A1E](#) [DS-100GL-S8A1E](#) [EPC-R4680CQ-XAA1E](#) [ESRP-CSS-UNO2484](#) [ITA-1611-](#)
[10A1E](#) [ITA-1711-10A1E](#) [MIC-720AI-00A1](#) [UNO-247-J1N1AE](#) [UTX-3115FS-S6A2E](#) [AMI220AF-4L-7500](#) [ELIT-1200](#) [AIE100-903-FL](#)
[EBOX671-517-FL-DC](#) [MVS900-511-FL](#) [AMS200](#) [SE-92-I7](#) [SI-606](#) [SI-60E](#) [ITG-100-AL-E1/2GB/S-R10](#)