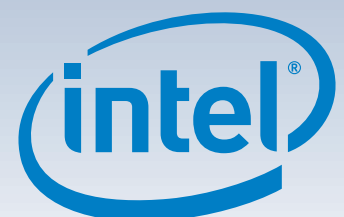


Intel® RAID Module RMS3CC080/ RMS3CC040 and Intel® RAID Maintenance Free Backup Unit 5 Quick Installation User's Guide

Thank you for buying an Intel® RAID Module. Your Intel® RAID Module provides reliability, high performance, and fault-tolerant drive subsystem management, and it offers an ideal RAID solution for the internal storage of workgroup, departmental, and enterprise systems. The following information will help you assemble your Intel® RAID Module and install components.

Perform all installation work at an electrostatic discharge (ESD)-safe workstation that meets the requirements of EIA-625, *Requirements for Handling Electrostatic Discharge Sensitive Devices*. You must perform all actions in accordance to the latest revision of the IPC-A-610 ESD-recommended practices.

This guide and other supporting documents are located on the web at:
<http://www.intel.com/support>.



H46893-001

(This page is intentionally left blank.)

Table of Contents

Product Overview	1
General Installation Process	2
Unpack the RAID Module	2
Prepare the Host Computer	2
Install the Barrel Standoff	2
Install the RAID Module and RMFBU5	2
(Optional) Connect the RMFBU5 to the Remote Super Capacitor Pack Module	3
Configure and Install the SAS/SATA Devices	3
Connect the RAID Module to the SAS/SATA Devices	3
Power up the System	4
Run the Intel® RAID BIOS Configuration Utility	4
Install the Operating System Driver	4
Reference Documents	4

Warning



Read all caution and safety statements in this document before performing any of the instructions. Also see the *Intel® Server Board and Server Chassis Safety Information* document at: <http://www.intel.com/support/motherboards/server/sb/cs-010770.htm> for complete safety information.

Warning



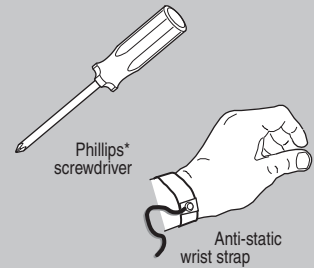
Installation and service of this product to be performed only by qualified service personnel to avoid risk of injury from electrical shock or energy hazard.

Caution



Observe normal ESD [Electrostatic Discharge] procedures during system integration to avoid possible damage to server board and/or other components.

Tools Required



Intel® is a registered trademark of Intel Corporation or its subsidiaries in the United States and other countries. *Other names and brands may be claimed as the property of others. Copyright © 2014, Intel Corporation. All rights reserved.

Product Overview

The Intel® RAID Module RMS3CC080/RMS3CC040, which is based on the LSISAS3008 I/O controller, uses a 16-MB Flash memory device for storing the BIOS and firmware.

The Intel® RAID Module RMS3CC080/RMS3CC040 is a PCI-Express* (PCIe*) 3.0 RAID adapter whose PCIe* connector is a custom 80-pin connector capable of performance up to 8GT/s per lane. The Intel® RAID Module RMS3CC080/RMS3CC040 is based on the LSISAS3108 ROC controller, and uses 1GB of DDR3 1866MHz memory as cache. The Intel® RAID Module RMS3CC080 controls eight internal SAS/SATA ports through two SFF-8643 mini-SAS HD-4i internal connectors. The Intel® RAID Module RMS3CC040 controls four internal SAS/SATA ports through one SFF-8643 mini-SAS HD-4i internal connector.

This 12Gb/s Intel® RAID Module is based on the LSI first-to-market SAS IC technology and proven MegaRAID technology. As third-generation PCIe RAID modules, these modules address the growing demand for increased data throughput and scalability requirements across midrange and enterprise-class server platforms. These RAID modules provide these features:

- 12.0 Gb/s SAS III performance
- 6.0 Gb/s SATA III performance
- Eight-lane 8 GT/s PCIe host interface

SAS technology brings a wealth of options and flexibility with the use of SAS devices and SATA devices within the same storage infrastructure. However, SAS devices and SATA devices bring individual characteristics that make each one a more suitable choice depending on your storage needs. MegaRAID products give you the flexibility to combine these two similar technologies on the same module, within the same enclosure, and in the same virtual drive.

The Intel® RAID Maintenance Free Backup Unit 5 (RMFBU5) is an Open NAND Flash Interface (ONFI) flash module that provides cache off-load capability to protect cached data in case of host power loss or server failure. The RMFBU5 module connects to a Super Capacitor Pack module, which provides power for the backup of the cache data in the Intel® RAID module RMSCC080/RMSCC040. The RMFBU5 module attaches directly to the Intel® RAID module RMSCC080/RMSCC040, and then it connects by cable to a Super Capacitor Pack module that is attached to an Intel® Server Chassis.

NOTE: These RAID modules support SATA II and SATA III technologies.

For more information, including the technical specifications for your RAID module, refer to the *12Gb/s Intel® RAID Controllers User Guide* on the Intel website <http://www.intel.com/support>.

NOTE: Record your RAID module serial number in a safe location in case you need to contact Intel.

General Installation Process

1 Unpack the RAID Module

CAUTION: It is good practice to back up your data before adding hardware, such as a RAID module, to your system.

Unpack the RAID module in a static-free environment. Remove the module from the antistatic bag, and inspect it for damage. A low-profile bracket is included with the RAID module. If the RAID module appears to be damaged or the low-profile bracket is missing, contact Intel or your reseller support representative.

The latest versions of the documentation, drivers, and firmware are available on the Intel website at <http://www.intel.com/support>. See [Reference Documents](#) for more information. The website contains utility programs, device drivers for various operating systems, and related documentation.

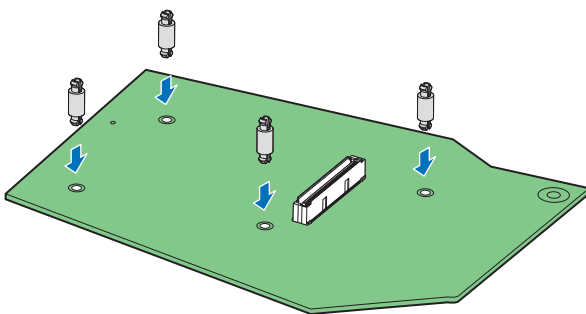
2 Prepare the Host Computer

CAUTION: Before you install the RAID module, make sure that the host computer is disconnected from the power and from any networks.

Turn off the host computer, and unplug the power cords from the rear of the power supply. Remove the cover from the host computer.

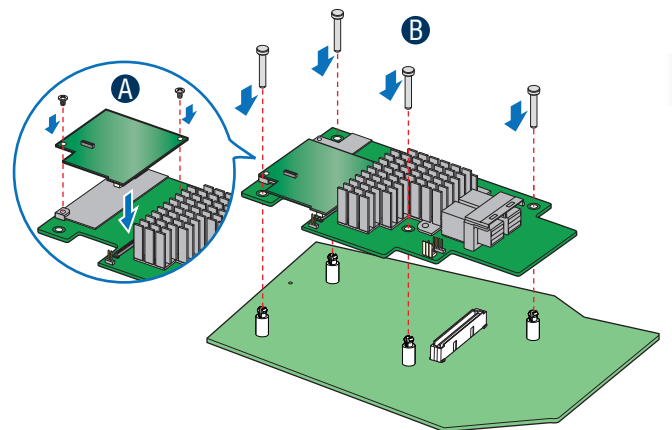
3 Install the Barrel Standoff

- A** Power down the system and disconnect the power cord.
- B** Locate the matching SAS Module connector on your server board. See your server board documentation.
- C** Insert the barrel standoffs into the matching holes in the server board. The Intel® Server Board S2600GZ is shown for illustrative purpose.



4 Install the RAID Module and RMFBU5

- A** (Optional) Hold the RMFBU5 module so that the front side faces upward, and align the J2 connector on the RMFBU5 with the connector JT3 on the RAID module.
- B** Press down gently but firmly to ensure that the RAID module is properly seated in the connectors, and then insert the four pin standoffs into the barrel standoffs respectively.

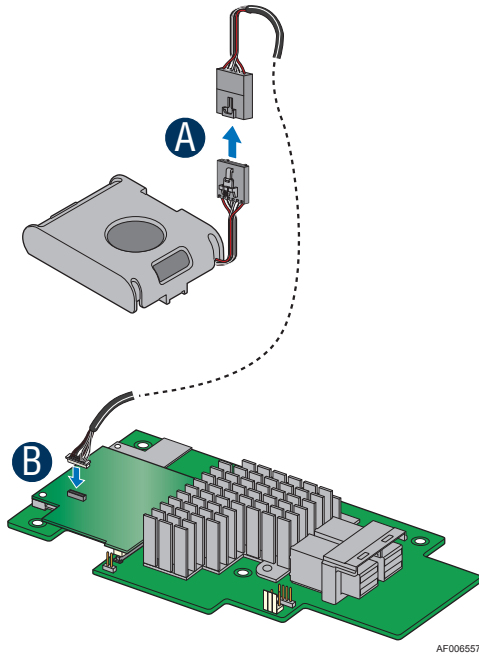


General Installation Process

5

(Optional) Connect the RMFBU5 to the Remote Super Capacitor Pack Module

- A** Connect the SuperCap cable with the remote Super Capacitor Pack module. Align the cable connectors to make sure that they are connected correctly.
- B** Insert the other 9-pin connector of the SuperCap cable to RMFBU5 connector J1.
- C** Mount the remote Super Capacitor Pack module to the server chassis. Refer to the related server service guide for details.



6

Configure and Install the SAS/SATA Devices

Configure and install the SAS devices, SATA devices, or both in the host computer case.

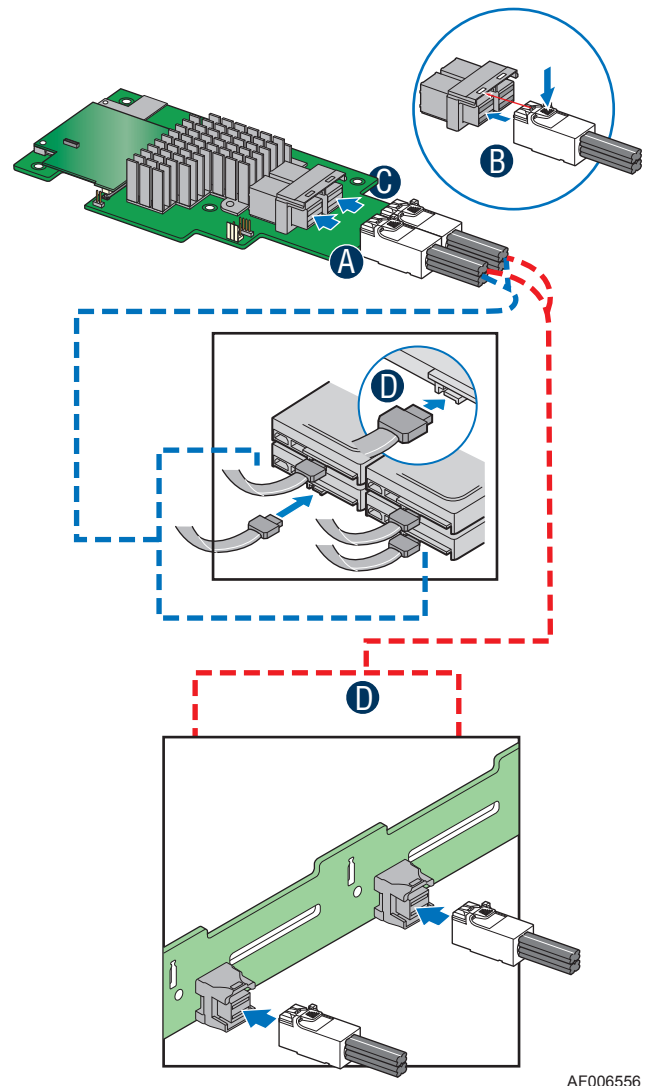
Refer to the documentation for the devices for any preinstallation configuration requirements.

7

Connect the RAID Module to the SAS/SATA Devices

- A** Connect the wide end of the provided cable to the up SFF-8643 connector (ports 0-3).
- B** Push the cable into the SFF-8643 connector until it makes a slight click.
- C** If using more than four drives, connect the wide end of the second cable to the down SFF-8643 connector (ports 4-7).
- D** Connect the other ends of the cables to SATA drives or to the ports on a SATA or SAS backplane.

! NOTE: Both non-expander backplanes (one cable per drive) and expander backplanes (one or two total cables) are supported. Drive power cables (not shown) are required.



General Installation Process

8

Power up the System

Reinstall the computer cover, and reconnect the power cords. Turn on the power to the host computer. Make sure that the power is turned on to the SAS devices and the SATA III devices before or at the same time that the power to the host computer is turned on. If the power is turned on to the host computer before it is turned on to the devices, the host computer might not recognize the devices.

The firmware takes several seconds to initialize. During this time, the RAID module scans the ports.

9

Run the Intel® RAID BIOS Configuration Utility

Run the Intel® RAID BIOS Configuration Utility to configure the groups and the virtual drives. When the message about the configuration utility appears on the screen, immediately press Ctrl+C to run the utility.



NOTE: Refer to the *Intel® RAID Software User Guide* for detailed steps on configuring drive groups and virtual drives.

10

Install the Operating System Driver

The RAID module can operate under various operating systems, but you must install the software drivers first.

You can view the supported operating systems and download the latest drivers for RAID modules from the Intel website at <http://www.intel.com/support>.

Refer to the *Intel® RAID Software User Guide* on <http://www.intel.com/support> for more information about installing the driver. Be sure to use the latest service packs that are provided by the operating system manufacturer and to review the `readme` file that accompanies the appropriate driver.

Reference Documents

If you need more information about any topic covered in this guide, refer to the following documentation on the Intel website at <http://www.intel.com/support>:

- *12Gb/s Intel® RAID Controllers User Guide*
- *Intel® RAID Software User Guide*
- *Software license agreement*

(This page is intentionally left blank.)

H46893-001



X-ON Electronics

Largest Supplier of Electrical and Electronic Components

Click to view similar products for [Other Modules](#) category:

Click to view products by [Intel](#) manufacturer:

Other Similar products are found below :

[AXXRPFKSSD](#) [B7A-R3A33-M](#) [B7A-R6B31](#) [B7A-T6C6](#) [RMS25CB080](#) [AXXRPFKSSD2](#) [B7A-R6A52](#) [B7A-T6D2](#) [7B47-K-03-2](#) [B7A-R6A38](#) [2288300-R](#) [B7A-R6A33](#) [B7A-R6C31](#) [B7A-R10SC01](#) [B7A-T10S1](#) [LPC1e-8124-C](#) [96RC-SAS-8P-PE-AD](#) [96RC-SAS-4P-PE-AD2](#) [96RC-SAS-4P-PE-AD1](#) [VROCISSDMOD](#) [RS3WC080](#) [05-25420-17](#) [B7A-R3A38-M](#) [H5-25460-00](#) [05-26106-00](#) [05-25704-00](#) [05-25703-00](#) [AXXRMFBU4](#) [TEL0107](#) [OKY3525-1](#) [OKY3917](#) [2281200-R](#) [2277500-R](#) [H5-25573-00](#) [L5-00219-00](#) [M88-32](#) [BCM957412A4120AC](#) [OKY3497-2](#) [6-PIN FEMALE JST SH-STYLE CABLE 12CM](#) [6-PIN FEMALE JST SH-STYLE CABLE 75CM](#) [PCM-23U1DG-CE](#) [50040R-02](#) [50010R-10](#) [50020R-10](#) [50051R](#) [RMS25KB080](#) [MAAM-009811-000](#) [MASL-011023](#) [WIXEL](#) [DFR0031-B](#)