

IFN147 N-Channel JFET

Features

- InterFET [N0450H Geometry](#)
- Low Noise: 1.1 nV/√Hz Typical
- High Gain: 30mS Typical
- RoHS Compliant
- SMT, TH, and Bare Die Package options.

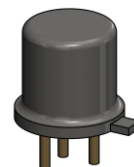
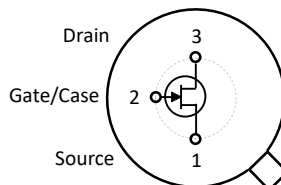
Applications

- Low-Noise Audio Amplifier
- Replacement for Japanese 2SK147

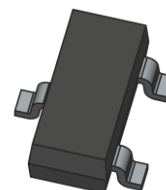
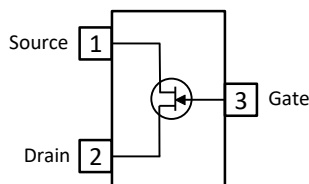
Description

The -50V InterFET IFN147 is a low noise high gain replacement for the Japanese 2SK147 JFET. Gate leakages are typically less than 50pA at room temperatures. The TO-18 package is hermetically sealed and suitable for military applications.

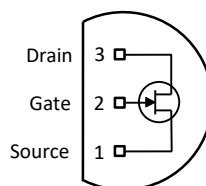
TO-18 Bottom View



SOT23 Top View



TO-92 Bottom View



Product Summary

| Parameters | | IFN147 Min | Unit |
|----------------------|------------------------------------|------------|------|
| BV _{GSS} | Gate to Source Breakdown Voltage | -40 | V |
| I _{DSS} | Drain to Source Saturation Current | 5 | mA |
| V _{GS(off)} | Gate to Source Cutoff Voltage | -0.3 | V |
| G _{FS} | Forward Transconductance | 20 | mS |

Ordering Information

| Part Number | Description | Case | Packaging |
|-------------|---|-------|---------------------------------------|
| IFN147 | Through-Hole | TO-18 | Bulk |
| PN147 | Through-Hole | TO-92 | Bulk |
| SMP147 | Surface Mount | SOT23 | Bulk |
| SMP147TR | 7" Tape and Reel: Max 3,000 Pieces 13" Tape and Reel: Max 9,000 Pieces | SOT23 | Minimum 1,000 Pieces Tape and Reel |
| IFN147COT | Chip Orientated Tray (COT Waffle Pack) | COT | 400/Waffle Pack |
| IFN147CFT | Chip Face-up Tray (CFT Waffle Pack) | CFT | 400/Waffle Pack |



Disclaimer: It is the Buyers responsibility for designing, validating and testing the end application under all field use cases and extreme use conditions. Guaranteeing the application meets required standards, regulatory compliance, and all safety and security requirements is the responsibility of the Buyer. These resources are subject to change without notice.

Electrical Characteristics

Maximum Ratings (@ $T_A = 25^\circ\text{C}$, Unless otherwise specified)

| Parameters | Value | Unit |
|--|------------|----------------------|
| V_{RGS} Reverse Gate Source and Gate Drain Voltage | -40 | V |
| I_{FG} Continuous Forward Gate Current | 10 | mA |
| P_D Continuous Device Power Dissipation | 300 | mW |
| P Power Derating | 2.4 | mW/ $^\circ\text{C}$ |
| T_J Operating Junction Temperature | -55 to 125 | $^\circ\text{C}$ |
| T_{STG} Storage Temperature | -65 to 200 | $^\circ\text{C}$ |

Static Characteristics (@ $T_A = 25^\circ\text{C}$, Unless otherwise specified)

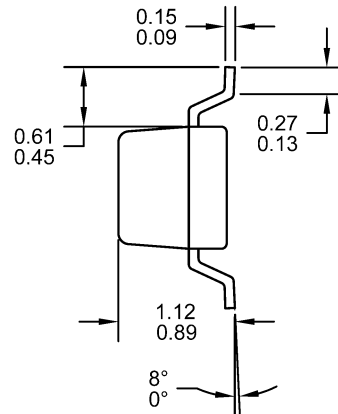
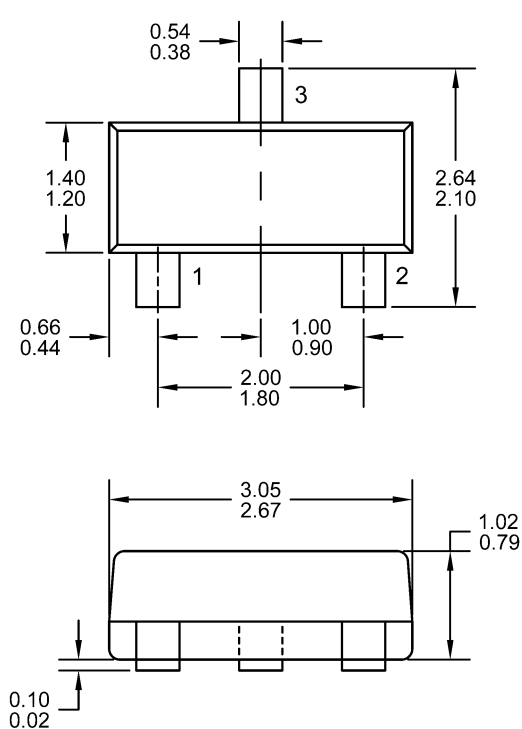
| Parameters | Conditions | IFN113 | | Unit |
|--|---|--------|----------|---------------|
| | | Min | Max | |
| $V_{(BR)GSS}$ Gate to Source Breakdown Voltage | $V_{DS} = 0V, I_G = -1\mu A$ | -40 | | V |
| I_{GSS} Gate to Source Reverse Current | $V_{GS} = -30V, V_{DS} = 0V, T_A = 25^\circ\text{C}$ $V_{GS} = -30V, V_{DS} = 0V, T_A = 150^\circ\text{C}$ | | -1 -1 | nA μA |
| $V_{GS(OFF)}$ Gate to Source Cutoff Voltage | $V_{DS} = 10V, I_D = 1\mu A$ | -0.3 | -1.2 | V |
| I_{DSS} Drain to Source Saturation Current | $V_{GS} = 0V, V_{DS} = 10V$ (Pulsed) | 5 | 30 | mA |

Dynamic Characteristics (@ $T_A = 25^\circ\text{C}$, Unless otherwise specified)

| Parameters | Conditions | IFN147 | | | Unit |
|--|---|--------|-----|-----|------|
| | | Min | Typ | Max | |
| G_{FS} Forward Transconductance | $V_{DS} = 10V, V_{GS} = 0V, I_{DSS} = 5mA,$ $f = 1kHz$ | 20 | 30 | | mS |
| C_{iss} Input Capacitance | $V_{DS} = 10V, V_{GS} = 0V, f = 1kHz$ | | | 75 | pF |
| C_{rss} Reverse Transfer Capacitance | $V_{DS} = 10V, I_D = 0A, f = 1kHz$ | | | 15 | pF |
| NF Noise Figure | $V_{DS} = 10V, I_D = 5mA, f = 1kHz$ $R_G = 100\Omega, f = 100Hz$ | | 1 | 10 | dB |

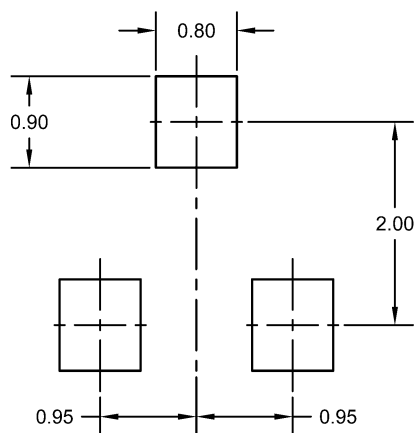
SOT23 (TO-236AB) Mechanical and Layout Data

Package Outline Data



1. All linear dimensions are in millimeters.
2. Package weight approximately 0.12 grams
3. Molded plastic case UL 94V-0 rated
4. For Tape and Reel specifications refer to InterFET CTC-021 Tape and Reel Specification, Document number: IF39002
5. Bulk product is shipped in standard ESD shipping material
6. Refer to JEDEC standards for additional information.

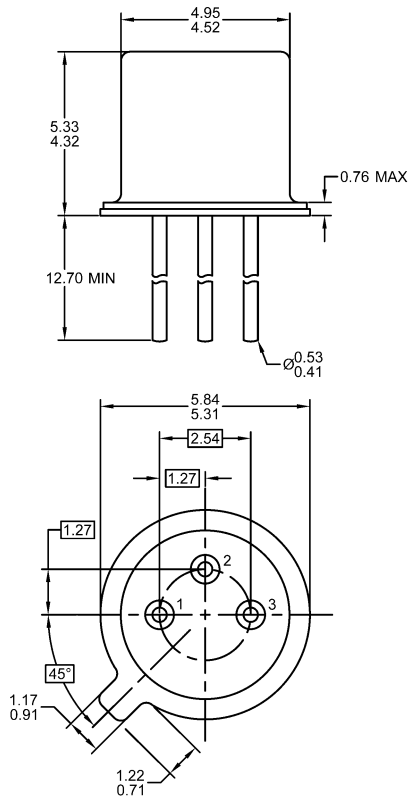
Suggested Pad Layout



1. All linear dimensions are in millimeters.
2. The suggested land pattern dimensions have been provided for reference only. A more robust pattern may be desired for wave soldering.

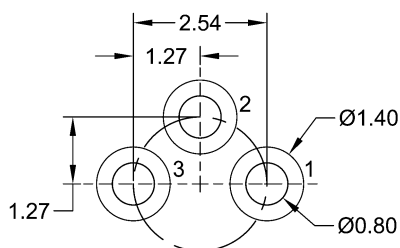
TO-18 Mechanical and Layout Data

Package Outline Data



1. All linear dimensions are in millimeters.
2. Package weight approximately 0.29 grams
3. Bulk product is shipped in standard ESD shipping material
4. Refer to JEDEC standards for additional information.

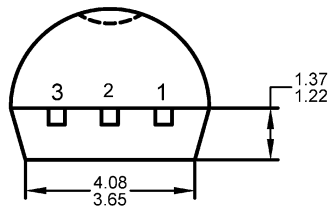
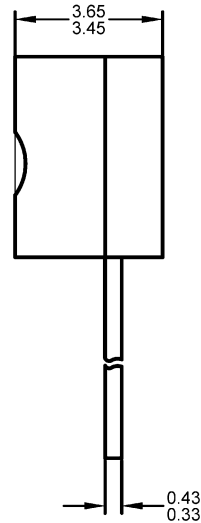
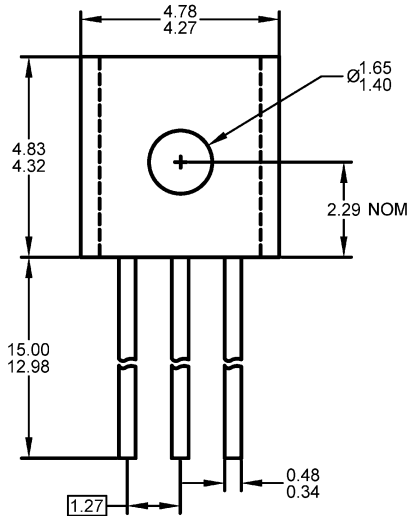
Suggested Through-Hole Layout



1. All linear dimensions are in millimeters.
2. The suggested land pattern dimensions have been provided as a straight lead reference only. A more robust pattern may be desired for wave soldering and/or bent lead configurations.

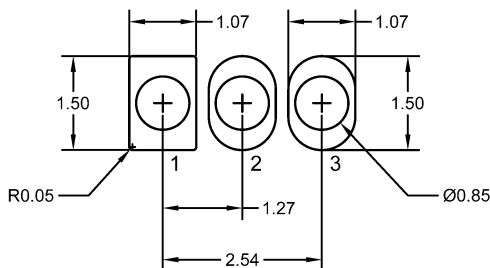
TO-92 Mechanical and Layout Data

Package Outline Data



1. All linear dimensions are in millimeters.
2. Package weight approximately 0.19 grams
3. Molded plastic case UL 94V-0 rated
4. Bulk product is shipped in standard ESD shipping material
5. Refer to JEDEC standards for additional information.

Suggested Through-Hole Layout



1. All linear dimensions are in millimeters.
2. The suggested land pattern dimensions have been provided as a straight lead reference only. A more robust pattern may be desired for wave soldering and/or bent lead configurations.

X-ON Electronics

Largest Supplier of Electrical and Electronic Components

Click to view similar products for [JFET](#) category:

Click to view products by [InterFET](#) manufacturer:

Other Similar products are found below :

[MCH3914-8-TL-H](#) [F5606](#) [2SK2394-6-TB-E](#) [CPH5901G-TL-E](#) [MCH3914-7-TL-H](#) [MCH5908H-TL-E](#) [CPH5902G-TL-E](#) [CPH5905G-TL-E](#)
[CPH5905H-TL-E](#) [2SK2394-7-TB-E](#) [NSVJ2394SA3T1G](#) [2N3819](#) [PN4393](#) [MMBFJ176](#) [2N4393](#) [U311](#) [2N5397](#) [2SK208-GR\(TE85L,F\)](#)
[MMBF4393LT1G](#) [J176_D74Z](#) [IF4500](#) [SMP4338](#) [SMP5116](#) [SMPJ232](#) [SMPJ310](#) [SMPJ109](#) [SMP4856](#) [IF1330](#) [SMPJ201](#) [SMP4340](#)
[SMP5484](#) [IFN5566](#) [2N2609](#) [2N3821](#) [2N3970](#) [2N3971](#) [2N3972](#) [2N4091](#) [2N4092](#) [2N4093](#) [2N4118](#) [2N4118A](#) [2N4221](#) [2N4221A](#) [2N4338](#)
[2N4339](#) [2N4416](#) [2N4416A](#) [2N4856](#) [2N4858](#)