

# Open-Q™ 410 Development Kit

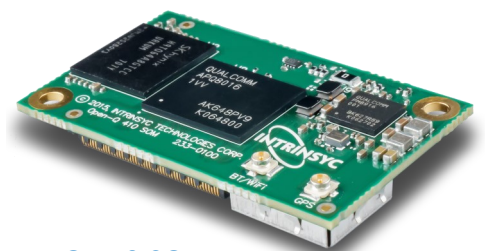
Based on the Qualcomm® Snapdragon™ 410 processor

Intrinsyc's Open-Q™ 410 Development Kit is a versatile, easy-to-use, exposed board platform based on our production ready, pre-certified, Open-Q™ 410 SOM, providing the ideal starting point for next generation embedded and IoT devices. The platform features the Open-Q™ 410 SOM, a carrier board exposing all the available IO, and a range of accessories to fast track your embedded and IoT product development.

The Development Kit is ideal for evaluation of the Open-Q™ 410 SOM and supports our optional LCD or 720p HDMI out (via HDMI adapter module), 1080p Full HD H.264 encode and decode, up to 13MP cameras, mic inputs and stereo outputs.

## Key Features

- Qualcomm® Snapdragon™ 410 processor (APQ8016)
- Powered by micro-sized (44x26.5mm) Open-Q 410 SOM
- Small form-factor Carrier Board (130x130mm)
- HDMI output, 2 camera connectors
- Exposed I/O for evaluation and proof of concept work
- Android™ 7, Android™ 5, Linux®, Microsoft Azure Certified



Open-Q 410 SOM



## Hardware Specifications

### Open-Q 410 SOM

\*See the Open-Q 410 SOM datasheet for complete details

<b>Processor</b>	Qualcomm® Snapdragon™ 410 (APQ8016) <ul style="list-style-type: none"><li>Quad-Core 64-bit ARM® Cortex™ A53 1.2GHz, Qualcomm® Adreno™ 305 GPU, Qualcomm® Hexagon™ v5 DSP</li></ul>
<b>Memory/Storage</b>	1GB LPDDR3 RAM, 8GB eMMC 5.0 Flash
<b>Wireless</b>	FCC/IC Pre-certified Wi-Fi 802.11b/g/n 2.4GHz (WCN3620), Bluetooth 4.1 + BLE
<b>Location Services</b>	GPS, GLONASS and Compass Receiver (WGR7640) with U.FL antenna connector

### Open-Q 410 Carrier Board

<b>Display</b>	HDMI Output via HDMI adapter module (included) or optional LCD / Touch Panel <ul style="list-style-type: none"><li>Up to 720p 60fps LCD</li><li>Up to Full HD + 720p external wireless display</li></ul>
<b>Camera</b>	2x camera connectors for optional camera accessories: 1x 4-lane MIPI CSI, 1x 2-lane MIPI CSI
<b>Video</b>	Encode up to 720p 30fps, Decode up to 1080p 30fps
<b>Audio</b>	Integrated audio codec (PM8916) with: 3.5mm headset jack, 3.5mm stereo line-in jack 2x speaker output connectors, 1x digital mic input header
<b>I/O</b>	<ul style="list-style-type: none"><li>1x UART debug over micro-B USB, 1x USB 2.0 device, micro-B, 2x USB 2.0 host, type-A, 1x μSD Socket</li><li>24pin Expansion header I2C, SPI, UART, GPIO</li><li>Wi-Fi/BT PCB antenna</li></ul>
<b>Operating Environment</b>	Power input: 12V/3A (power adapter included) or single-cell Li-Ion battery (not included) Operating Temperature: 0°C to +50°C
<b>Form Factor</b>	Carrier Board 130mm x 130mm, SOM 44mm x 26.5mm

## Software

### OS Support

Android™ 7 Nougat, Android™ 5 Lollipop, Linux®, Microsoft Azure Certified  
Note that all hardware features may not be supported by all SW — see latest SW release notes for details.

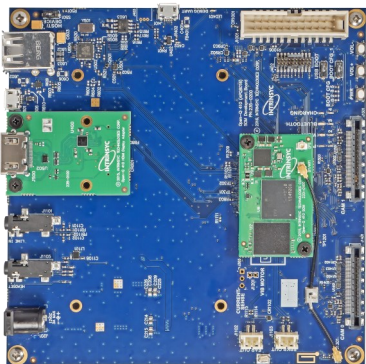
## Purchasing Information

<b>Open-Q 410 Dev Kit</b>	Part number: QC-DB-H00003 <a href="#">Store Link</a>
<b>Open-Q 410 SOM</b>	Part number: QC-DB-H00004 <a href="#">Store Link</a>
<b>Open-Q 410 LCD</b>	Part number: QC-DB-H00005 <a href="#">Store Link</a>
<b>Open-Q 13MP Camera</b>	Part number: 030-0181-0101_B <a href="#">Store Link</a>

## Intrinsyc Product Design Services

Intrinsyc also offers comprehensive product development including hardware, software, mechanical engineering, as well as specialty services such as camera, audio, DSP, and RF development.

Contact Intrinsyc to discuss your product design needs today:  
[sales@intrinsyc.com](mailto:sales@intrinsyc.com)



Optional Display and Camera

Development Kit includes: Carrier board, SOM, 12V power supply, HDMI adapter module, HDMI cable, Quick Start Guide, access to full documentation, SW updates, and basic development kit support.

Specifications are subject to change without notice. Not all features listed may be supported in software. All brand or product names are trademarks or registered trademarks of their respective owners. Qualcomm Snapdragon, Qualcomm Kryo, Qualcomm Spectra, Qualcomm Adreno, Flunce and Qualcomm Hexagon are products of Qualcomm Technologies, Inc. Qualcomm IZat is a product of Qualcomm Atheros, Inc. Qualcomm, Snapdragon, Adreno, Flunce and Hexagon are trademarks of Qualcomm Incorporated, registered in the United States and other countries. Kryo, Spectra and IZat are trademarks of Qualcomm Incorporated. Used with permission. Cortex is a trademark of ARM Holding plc. Used with permission.

## **X-ON Electronics**

Largest Supplier of Electrical and Electronic Components

*Click to view similar products for [Intrinsyc](#) manufacturer:*

Other Similar products are found below :

[QC-DB-I00004](#) [QC-DB-H00005](#) [030-0276-0101\\_A](#) [QC-DB-G00005](#) [QC-DB-M00003](#) [QC-DB-M10023A](#) [QC-DB-I10003](#) [QC-DB-N10003](#)

[QC-DB-I10006](#) [QC-DB-Q00003](#) [QC-DB-H00003](#)