

DK-101xx: DK-10100, DK-10101, DK-10111, DK-10110

Development Kit for ICP-101xx High Accuracy, Low Power, Barometric Pressure and Temperature Sensor

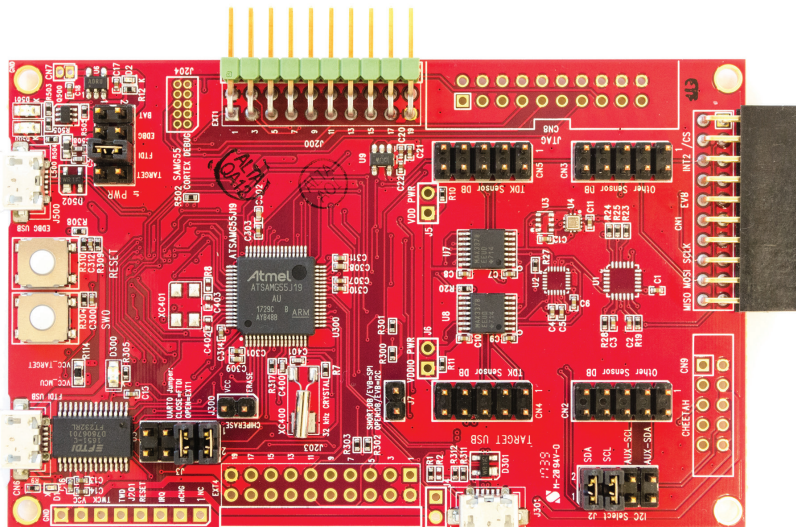
Overview

The DK-101xx is a comprehensive development platform for ICP-10100, ICP-10101, ICP-10111, and ICP-10110, a High Accuracy, Low Power, Waterproof* Barometric Pressure and Temperature Sensor IC.

The platform designed around Microchip G55 MCU can be used by developers for rapid evaluation and development of ICP-101xx based solutions. The DK-101xx includes an on-board Embedded Debugger so external tools are not required to program or debug the G55 MCU.

Key Features

- ICP-101xx Pressure and Temperature Sensor
- Microchip G55 MCU with 512KB Flash
- On-board embedded debugger for programming and debugging
- USB connectors for host interface to
- Support software debug and sensor data logging
- Board power supply through USB



Part Number	Development Kit
ICP-10100	DK-10100
ICP-10101	DK-10101
ICP-10110	DK-10110
ICP-10111	DK-10111

The development kit comes with necessary software including InvenSense MotionLink, a GUI based development tool and embedded Motion Drivers for ICP-101xx.

Embedded Motion Drivers (eMD) consists of a set of APIs to configure various aspects of the platform including ICP-101xx sensor parameters such as Raw Data, and Calibrated Data (Temp in C, Pressure in Pa).

MotionLink is a GUI based development tool included with the platform. It can be used to capture and visualize the sensor data from the motion sensor.

* DK-10100 and DK-10110 only

X-ON Electronics

Largest Supplier of Electrical and Electronic Components

Click to view similar products for [invensense](#) manufacturer:

Other Similar products are found below :

[EV_INMP411-FX](#) [DK-20948](#) [ICM-20602](#) [EV_ICM-20648](#) [DK-10110](#) [EV_T4076](#) [DK-10101](#) [DK-10111](#) [EV_INMP522-FX](#) [MPU-6000EVB](#)
[DK-10100](#) [EV_INMP504-FX](#) [EV_INMP510-FX](#) [EV_T4078](#) [DK-CH101](#) [DK-42688-P](#) [DK-42605](#) [MOD_CH101-03-01](#)
[MMICT4076-00-908](#) [ICS-41350](#) [INMP421BCEZ-R7](#) [ICS-40618](#) [MPU-6500](#) [ICS-40180](#) [INMP404ACEZ-R7](#) [INMP521ACEZ-R7](#)
[INMP621ACEZ-R7](#) [INMP504ACEZ-R7](#) [ICS-40720](#) [ICM-20948](#) [INMP522ACEZ-R7](#) [MPU-6050](#) [ICS-43432](#) [ICS-52000](#) [ICS-40300](#) [MPU-](#)
[6000](#) [ICM-20608-G](#) [MMICT4078-00-908](#) [ICP-10100](#) [ICS-40310](#) [INMP510ACEZ-R7](#) [ICM-20649](#)