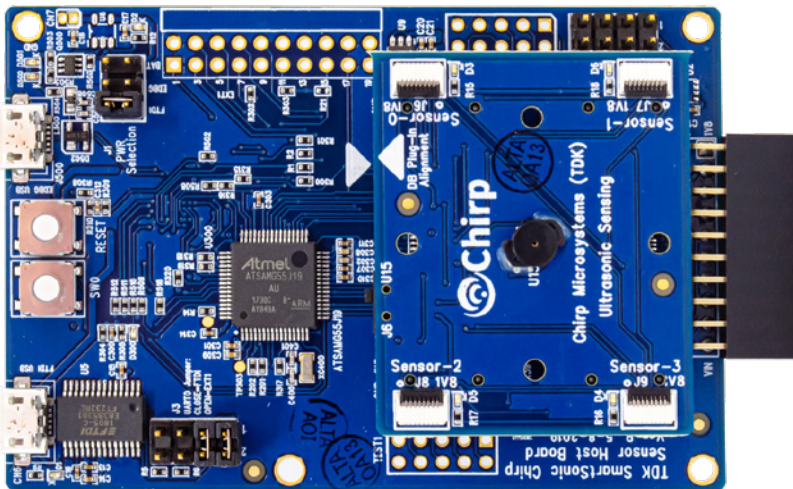


DK-CH101

Development Kit for CH-101 Ultrasonic Time-of-Flight Sensor

Overview

The DK-CH101 is a comprehensive development platform for CH-101, a miniature ultrasonic time-of-flight range sensor with a range of 4 cm to 120 cm. The development kit is equipped with an on-board CH-101 sensor and up to four external MOD_CH101 sensor modules can be connected to the board via flat-flex cables for easy prototyping.



Part of the SmartSonic platform, the DK-CH101 is designed around Atmel's SAM5551B Cortex-M4 MCU, and can be used by developers for rapid evaluation and development of CH-101 based solutions. The DK-CH101 includes an on-board Embedded Debugger so external tools are not required to program or debug the SAM5551B MCU. The DK-CH101 includes an on-board Embedded Debugger so external tools are not required to program or debug the SAM5551B MCU.

The development kit comes with necessary software including SonicLink, a GUI based development tool and embedded drivers for CH-101.

SonicLink is a GUI based development tool included with the platform. It can be used to capture and visualize the sensor data from the on-board CH-101 ultrasonic sensor and external MOD_CH101 sensor modules.

Key Features

- *Ultralow power range sensing*
- *Accurate range measurement regardless of target size*
- *Detects objects of any color, including optically transparent ones*
- *Immunity to ambient noise*
- *Works under any lighting condition*
- *Synchronized multi-sensor operation enables 2D and 3D range sensing*
- *Wide field of view (FoV)*

X-ON Electronics

Largest Supplier of Electrical and Electronic Components

Click to view similar products for [invensense](#) manufacturer:

Other Similar products are found below :

[EV_INMP411-FX](#) [DK-20948](#) [ICM-20602](#) [EV_ICM-20648](#) [DK-10110](#) [EV_T4076](#) [MPU-6000EVB](#) [DK-10101](#) [DK-10111](#) [EV_INMP522-FX](#)
[DK-10100](#) [EV_INMP504-FX](#) [EV_INMP510-FX](#) [EV_T4078](#) [DK-CH101](#) [DK-42688-P](#) [DK-42605](#) [INMP522ACEZ-R7](#) [MOD_CH101-03-01](#)
[MMICT4076-00-908](#) [ICS-41350](#) [INMP421BCEZ-R7](#) [ICS-40618](#) [ITG-1010](#) [MPU-6500](#) [ICS-40180](#) [IXZ-2510](#) [ISZ-2510](#) [INMP521ACEZ-R7](#)
[INMP504ACEZ-R7](#) [ICS-40720](#) [ICM-20948](#) [INMP404ACEZ-R7](#) [INMP621ACEZ-R7](#) [MPU-6050](#) [ICS-43432](#) [ICS-52000](#) [ICS-40300](#) [MPU-](#)
[6000](#) [ICM-20608-G](#) [MMICT4078-00-908](#) [ICP-10100](#) [ICS-40310](#) [INMP510ACEZ-R7](#) [ICM-20649](#)