



# Installation Guide

2-Port USB DVI-D Cable KVM Switch  
with Audio and Microphone Support

GCS932UB

PART NO. M1103



## Table of Contents

Package Contents	4	Sun Keyboard Emulation	18
System Requirements	5	Factory Default Settings	19
Overview	6	Firmware Upgrade	20
Standard Installation	7	Upgrade Fail	24
Advanced Installation	9	Federal Communications Commission (FCC) Statement	25
LED Indication	12	CE Statement	27
Port Switching	13	SJ/T 11364-2006	28
Hotkeys Summary Table	14	Limited Warranty	29
Autoscan Interval Table	16	Contact	30
Mac Keyboard Emulation	17		

## Package Contents

- 1 x 2-Port USB DVI-D Cable KVM Switch
- 1 x Remote Switch Button
- 1 x Installation Guide
- 1 x Warranty Card

# System Requirements

## Console

- DVI-D supported monitor
- USB keyboard and mouse
- Powered speakers and microphone (optional)

## Computers

- Two USB ports
- A DVI-D supported connection
- 3.5mm audio and microphone connections (optional)

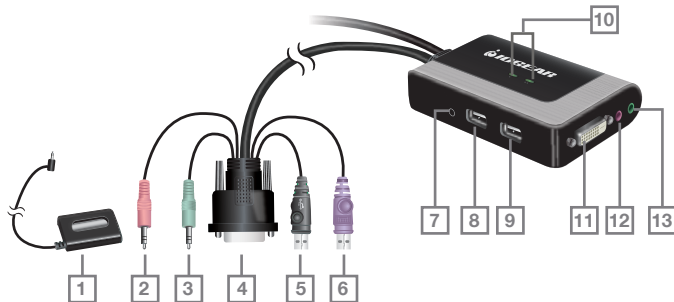
## Operating System

- Windows XP
- Windows Vista (32bit/64bit)
- Windows 7
- Mac OS X or greater
- Sun Solaris workstation
- Linux, UNIX and other USB supported systems\*

\*Additional drivers and support may be needed

## Overview

1. Remote Switch Button
2. CPUs Mic. connection
3. CPUs Audio connection
4. CPUs DVI-D connection
5. CPUs USB Mouse connection
6. CPUs USB Keyboard connection
7. Remote Switch Button Port
8. Console USB Mouse Port
9. Console USB Keyboard Port
10. LEDs
11. Console DVI-D Video Port
12. Console Mic. Port
13. Console Audio Port



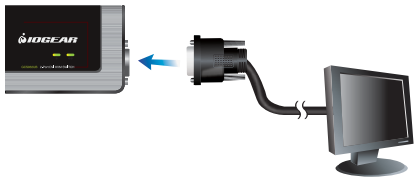
## Standard Installation

### Step 1

Please make sure your computers and monitor are powered off before you start.

### Step2

Connect the DVI cable from your monitor to the console DVI monitor port. Then, turn on the monitor.



### Step 3

Connect your USB keyboard and mouse to the console USB keyboard port and console USB mouse port. If you would like to use the remote switch button, please connect it to the remote



switch button port.

#### Step 4

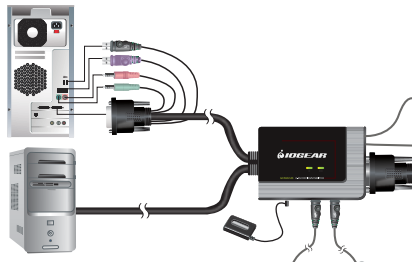
Connect your powered speaker and mic. to the console audio port and console mic. Port.



#### Step 5

Connect a set of your molded KVM cable to each of your computers – DVI cable to the DVI output, USB cables to open USB ports from your computer, audio cable to your audio output and mic. cable to the mic. input.

#### Final Step





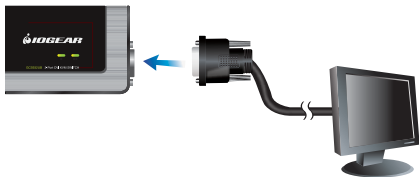
## Advanced Installation

### Step 1

Please make sure your computers and monitor are powered off before you start.

### Step2

Connect the DVI cable from your monitor to the console DVI monitor port. Then, turn on the monitor.



### Step 3

Connect your USB keyboard to the console USB keyboard port. If you would like to use the remote switch button, please connect it to the remote switch button port.



#### Step 4

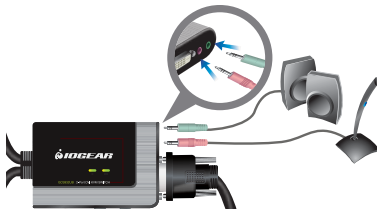
Connect a powered USB hub to the console mouse port, then connect the mouse to any available USB port in the hub. Then, connect any peripherals that you want to share between your computers to the other available USB ports in the hub.

Note: Please make sure mouse emulation has been disabled for this setup to function correctly.



#### Step 5

Connect your powered speaker and mic. to the console audio port and console mic. Port.

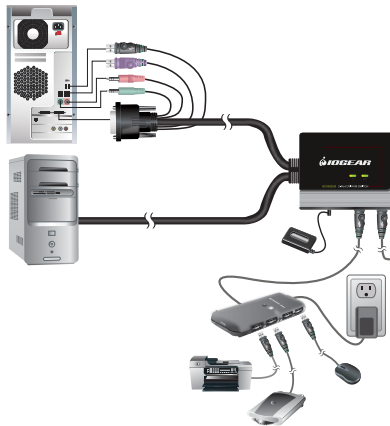


### Step 6

Connect a set of your molded KVM cable to each of your computers – DVI cable to the DVI output, USB cables to open USB ports from your computer, audio cable to your audio output and mic. cable to the mic. input.

### Final Step

Turn on your computers.



## LED Indication

### LED Indication

- LED will light up in Green showing the port that can be controlled by the console.
- Both LEDs will be flashing together when the KVM is in Fireware Upgrade Mode.

## Port Switching

You can switch port via remote switch button, mouse or hotkey commands.

### Port Switching via Remote Switch Button

Simply press the remote switch button once to switch focus to the next port.

### Port Switching via Mouse

Simply press scroll wheel button twice rapidly to switch focus to the next port.\*

\*Note: This feature requires a mouse that has a scroll wheel. Also, this feature can only be used when both Mouse Emulation Mode and Mouse Port-Switching Mode are enabled.

### Port Switching via Hotkey Commands

To trigger a Hotkey Mode, simply press [Scroll Lock] [Scroll Lock]\*\*. Please refer to Hotkey Summary Table for details.

\*\*Note: If there is a conflict using [Scroll Lock] [Scroll Lock] sequence, you can change to the alternative sequence [Ctrl] [Ctrl] by press and holding the remote switch button for 3 seconds. When you press and hold the remote switch button for 3 second when the sequence is [Ctrl] [Ctrl], it will change the sequence back to [Scroll Lock] [Scroll Lock].

## Hotkeys Summary Table

Hotkey combination	Description	
[Scroll Lock] [Scroll Lock] + or [Ctrl] [Ctrl]* +  *Note: If alternative hotkey sequence is chosen	[Enter]	Switch KVM and audio focus to the next port
	[k] [Enter]	Switch KVM focus to the next port
	[s] [Enter]	Switch audio focus to the next port
	[a] [Enter]	Activate Autoscan Mode. It will toggle between the two computers every 5 seconds
	[a] [Enter] [n]	Activate Autoscan Mode. It will toggle between the two computers with the specific time depending on the interval [n] that you have input. Please see Autoscan Interval Table for details.
	[x] [Enter]	Change hotkey sequence to the alternative sequence
	[m] [Enter]	Enable/disable mouse emulation
	[d] [Enter]	Capture and store monitor's EDID on specific port
	[w] [Enter]	Enable/disable mouse port-switching function  Note: If you enable this feature when Mouse Emulation Mode is disabled, Mouse Emulation Mode will be enabled automatically
	[F2] [Enter]	Enable Mac keyboard emulation
[F3] [Enter]	Enable Sun keyboard emulation	

Hotkey combination		Description
[Scroll Lock] [Scroll Lock] + or [Ctrl] [Ctrl]* +	[F4] [Enter]	List out current settings  Note: Please have a Notepad or word document opened before you trigger this function.
	[F5] [Enter]	Perform a USB keyboard and mouse reset
*Note: If alternative hotkey sequence is chosen	[F10] [Enter]	Auto detect keyboard operating system
	[r] [Enter]	Resets to factory default settings








## Autoscan Interval Table

n	Description
1	3 seconds
2	5 seconds (default)
3	10 seconds
4	20 seconds



## Mac Keyboard Emulation



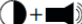




The PC compatible (101/104 key) keyboard can emulate the functions of the Mac keyboard. The emulation mappings are listed in the table below.

PC Keyboard	Mac Keyboard		
[Shift]	Shift	[Alt]	Alt
[Ctrl]	Ctrl	[Print Screen]	F13
	⌘	[Scroll Lock]	F14
[Ctrl] [1]			=
[Ctrl] [2]		[Enter]	Return
[Ctrl] [3]		[Backspace]	Delete
[Ctrl] [4]		[Insert]	Help
		[Ctrl] 	F15

\*Note: When using key combinations, press and release the first key (Ctrl), then press and release the second key.

## Sun Keyboard Emulation

The PC compatible (101/104 key) keyboard can emulate the functions of the Sun keyboard. The emulation mappings are listed in the table below.

PC Keyboard	Sun Keyboard	PC Keyboard	Sun Keyboard
[Ctrl] [t]	Stop	[Ctrl] [F9]	Find
[Ctrl] [F2]	Again	[Ctrl] [F10]	Cut
[Ctrl] [F3]	Props	[Ctrl] [1]	
[Ctrl] [F4]	Undo	[Ctrl] [2]	
[Ctrl] [F5]	Front	[Ctrl] [3]	
[Ctrl] [F6]	Copy	[Ctrl] [4]	
[Ctrl] [F7]	Open	[Ctrl] [h]	Help
[Ctrl] [F8]	Paste		Compose
			

\*Note: When using key combinations, press and release the first key (Ctrl), then press and release the second key.

## Factory Default Settings

<b>Function</b>	<b>Default Setting</b>
Autoscan Interval	5 seconds
Hotkeys	[Scroll Lock] [ Scroll Lock]
Keyboard Operating Platform	PC compatible
Mouse Emulation	On
Mouse Port-Switching	Off

## Firmware Upgrade

Note: In order to perform a firmware upgrade, you need to use a computer that's not connected to the KVM.

### Step 1

Go to [www.iogear.com](http://www.iogear.com) to download the latest available firmware or the specific firmware that you wish to upgrade to.

### Step 2

Please make sure all the computers that are connected to the KVM are completely shutdown.

### Step 3

Press and hold the remote switch button of the KVM while connecting the 2 USB connections of a set of KVM cable to the computer that you will use to perform the firmware upgrade. When you see the 2 LEDs are flashing on the KVM, you can now release the remote switch button.

Note: The computer that you use to perform the firmware upgrade must be powered on before you connect the 2 USB connections to it.

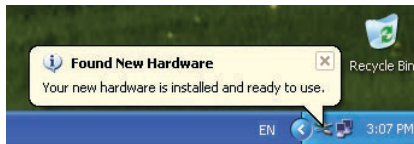
#### Step 4

Windows will now install all the required drivers. You may see the below message popup in tray icon area.



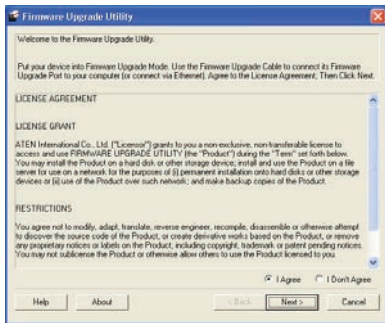
#### Step 5

After you see the below message "Your new hardware is installed and ready to use.", extract the downloaded file with WinRAR or compatible software. Then double click on the execute file to begin with the Firmware Upgrade Utility.



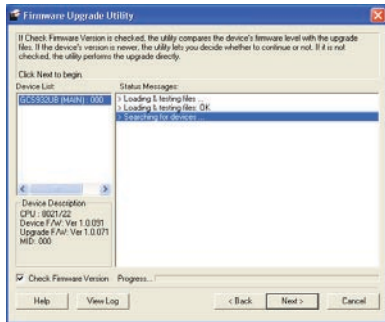
## Step 6

Read the License Agreement and click “I Agree” then click “Next” if you wish to continue with the firmware upgrade. Otherwise, click “Cancel” to exit.



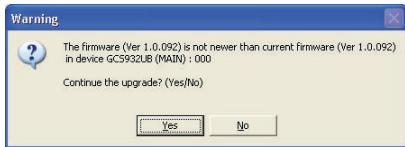
## Step 7

Choose the correct KVM that you wish to perform firmware upgrade from the “Device List” and then click “Next” to continue. Then the Firmware Upgrade Utility will verify if there is a KVM connected to the computer by the firmware upgrade cable. (Check Firmware Version checkbox is optional)



## Step 8

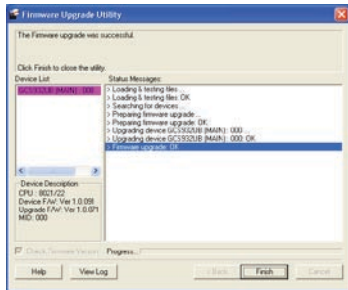
If you have checked the “Check Firmware Version” checkbox, then the utility will check the current firmware that is on your KVM. If the current firmware is newer than the firmware that you wish to upgrade to, a window will popup and prompt you to ask if you wish to proceed. Simply click “Yes” to start the upgrade and “No” to cancel the upgrade.



Note: If you did not check the “Check Firmware Version” checkbox, utility will perform the upgrade automatically no matter what version of firmware you have in the KVM.

## Step 9

When the firmware upgrade is done, you will see “Firmware upgrade OK” in the “Status Messages” window. Then simply click “Finish” to complete the whole firmware upgrade process.



## Final Step

Now the KVM will reset by itself and it will be ready for usage after the reset.

## Upgrade Fail

Unplug the 2 USB connections from your computer that has performed the firmware upgrade. Then, repeat the firmware upgrade process by following the procedure of Firmware Upgrade section starting from step 3.



## Federal Communications Commission (FCC) Statement

15.21

You are cautioned that changes or modifications not expressly approved by the part responsible for compliance could void the user's authority to operate the equipment.

15.105(b)

his equipment has been tested and found to comply with the limits for a Class B digital device, pursuant to part 15 of the FCC rules. These limits are designed to provide reasonable protection against harmful interference in a residential installation. This equipment generates, uses and can radiate radio frequency energy and, if not installed and used in accordance with the instructions, may cause harmful interference to radio communications. However, there is no guarantee that interference will not occur in a particular installation. If this equipment does cause harmful interference to radio or television reception, which can be determined by turning the equipment off and on, the user is encouraged to try to correct the interference by one or more of the following measures:

- Reorient or relocate the receiving antenna.
- Increase the separation between the equipment and receiver.
- Connect the equipment into an outlet on a circuit different from that to which the receiver is connected.
- Consult the dealer or an experienced radio/TV technician for help.



THIS DEVICE COMPLIES WITH PART 15 OF THE FCC RULES. OPERATION IS SUBJECT TO THE FOLLOWING TWO CONDITIONS:

1. this device may not cause interference and
2. this device must accept any interference, including interference that may cause undesired operation of the device.

FCC RF Radiation Exposure Statement:

This equipment complies with FCC radiation exposure limits set forth for an uncontrolled environment. End users must follow the specific operating instructions for satisfying RF exposure compliance. This transmitter must not be co-located or operating in conjunction with any other antenna or transmitter.

## CE Statement

This device has been tested and found to comply with the requirements set up in the council directive on the approximation of the law of member states relating to EMC Directive 89/336/EEC, Low Voltage Directive 73/23/EEC and R&TTE Directive 99/5/EC.

The product has been approved for LVD and covered the following countries:  
Belgium, Denmark, France, Germany, Italy, Portugal, U.K., Spain, Sweden

## SJ/T 11364-2006

The following contains information that relates to China.

部件名称	有毒有害物质或元素					
	铅 (Pb)	汞 (Hg)	镉 (Cd)	六价 (Cr(VI))	多溴联苯 (PBB)	多溴二苯醚 (PBDE)
电器部件	●	○	○	○	○	○
机构部件	○	○	○	○	○	○

○:表示该有毒有害物质在该部件所有均质材料中的含量均在SJ/T 11363-2006规定的限量要求之下。

●:表示符合欧盟的豁免条款，但该有毒有害物质至少在该部件的某一均质材料中的含量超出SJ/T 11363-2006的限量要求。

x:表示该有毒有害物质至少在该部件的某一均质材料中的含量超出SJ/T 11363-2006的限量要求。



## Limited Warranty

IN NO EVENT SHALL THE DIRECT VENDOR'S LIABILITY FOR DIRECT, INDIRECT, SPECIAL, INCIDENTAL OR CONSEQUENTIAL DAMAGES RESULTING FROM THE USE OF THE PRODUCT, DISK, OR ITS DOCUMENTATION EXCEED THE PRICE PAID FOR THE PRODUCT.

The direct vendor makes no warranty or representation, expressed, implied, or statutory with respect to the contents or use of this documentation, and especially disclaims its quality, performance, merchantability, or fitness for any particular purpose. The direct vendor also reserves the right to revise or update the device or documentation without obligation to notify any individual or entity of such revisions, or updates. For further inquiries please contact IOGEAR.

## Contact

### **IOGEAR**

23 Hubble

Irvine, CA 92618

P 949.453.8782

F 949.453.8785

Visit us at: [www.iogear.com](http://www.iogear.com)

© 2009 IOGEAR® Part No. M1103

IOGEAR, the IOGEAR logo, are trademarks or registered trademarks of IOGEAR, Inc. Microsoft and Windows are registered trademarks of Microsoft Corporation. All other brand and product names are trademarks or registered trademarks of their respective holders. IOGEAR makes no warranty of any kind with regards to the information presented in this document. All information furnished here is for informational purposes only and is subject to change without notice. IOGEAR, Inc. assumes no responsibility for any inaccuracies or errors that may appear in this document.





## About Us



### FUN

IOGEAR offers connectivity solutions that are innovative, fun, and stylish, helping people enjoy daily life using our high technology products.



### GREEN

IOGEAR is an environmentally conscious company that emphasizes the importance of conserving natural resources. The use of our technology solutions helps reduce electronic waste.



### HEALTH

IOGEAR supports healthy and fit lifestyles. By integrating products with the latest scientific developments, IOGEAR's solutions enhance the life of end-users.



## **X-ON Electronics**

Largest Supplier of Electrical and Electronic Components

*Click to view similar products for [IOGEAR](#) manufacturer:*

Other Similar products are found below :

[GSTY103](#) [GUB431](#) [GUS402](#) [GCS932UB](#) [GCS62HU](#) [GCS24U](#) [GDVIMVGAF](#) [GVS62](#) [GCS22U](#) [GCS72U](#) [GFR381](#) [GFR281W6](#) [GWU635](#)  
[GUH285W6](#)