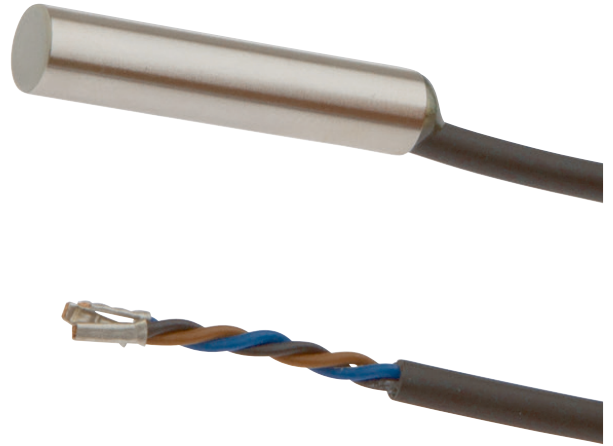


## IB06E056

### INDUCTIVE SENSORS • NORM SWITCHING DISTANCE

sensor inductive, Ø6,5mm 30long, Flush, Sn: 1.5, 5V DC, PNP NO,  
Cable 0.35m PVC, IP67, Brass Nickel-plated



#### MECHANICAL FEATURES

|  |                                      |
|--|--------------------------------------|
| Active area material of sensor           | Pocan KU 2-7503/1 + Batch RAL7032 LS |
| Alignment of cable entry                 | Axial                                |
| Ambient temperature                      | -25 °C ... 70 °C                     |
| Cable infeed                             | Axial                                |
| Cable length                             | 0.35 m                               |
| Degree of protection (IP)                | IP67                                 |
| Design                                   | Cylinder plain                       |
| Housing coating                          | Nickel-plated                        |
| Housing material                         | Brass                                |
| Material of cable sheath                 | PVC                                  |
| Mechanical mounting condition for sensor | Flush                                |
| Number of cores                          | 3                                    |
| Pressure-proof                           | -                                    |
| Sensor diameter                          | 6.5 mm                               |
| Sensor length                            | 30 mm                                |
| Wire cross section                       | 0.14 mm <sup>2</sup>                 |

#### ELECTRICAL FEATURES

|                                   |           |
|-----------------------------------|-----------|
| Cascadable                        | -         |
| Correction factor (aluminum)      | 0.3       |
| Correction factor (brass)         | 0.4       |
| Correction factor (copper)        | 0.2       |
| Correction factor (St37)          | 1         |
| Correction factor (stainl. steel) | 0.7       |
| Hysteresis                        | 15 %      |
| No-load current                   | 10 mA     |
| Norm measuring plate              | 6.5x6.5x1 |
| Rated switching current           | 100 mA    |
| Readiness delay                   | 50 ms     |
| Relative repeat accuracy          | 2 %       |
| Residual ripple                   | 10 %      |
| Reverse polarity protection       | +         |
| Short-circuit protection          | +         |

## ELECTRICAL FEATURES

|  |                       |
|--|-----------------------|
| Suitable for safety functions                  | -                     |
| Supply voltage                                 | 5 V ... 5 V           |
| Switching distance                             | 1.5 mm                |
| Switching frequency                            | 3000 Hz               |
| Type of electrical connection                  | Cable                 |
| Type of switching function                     | Normally open contact |
| Type of switching output                       | PNP                   |
| Voltage drop                                   | 1 V                   |
| Voltage type                                   | DC                    |
| With monitoring function of downstream devices | -                     |

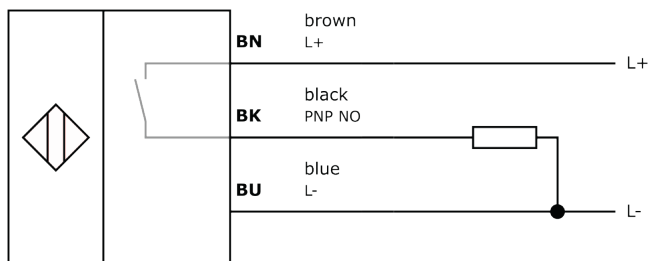
## Other

|                      |                       |
|----------------------|-----------------------|
| Packaging dimensions | 100mm x 7.0mm x 130mm |
| Shipping weight      | 0.01kg                |
| Tariff code          | 85365019              |

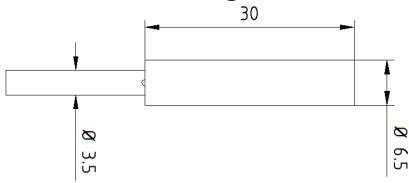
## Classification

|                   |          |
|-------------------|----------|
| ipf product group | 700      |
| eClass 8.0        | 27270101 |
| eClass 9.0        | 27270101 |
| eClass 9.1        | 27270101 |
| ETIM-5.0          | EC002714 |
| ETIM-6.0          | EC002714 |
| ETIM-7.0          | EC002714 |

## Connection



## Dimensional drawing



## Installation



Mounting / installation may only be carried out by a qualified electrician!

## Disposal



## Safety warnings

Before initial operation, please make sure to follow all safety instructions that may be provided in the product information. Never use these devices in applications where the safety of a person depends on their functionality. LED lighting systems can generate intensive UV radiation, which can damage your eyes in case of improper use. The manufacturer cannot be held responsible for damages that result from improper use or connection.

## X-ON Electronics

Largest Supplier of Electrical and Electronic Components

*Click to view similar products for [Proximity Sensors](#) category:*

*Click to view products by [IPF ELECTRONIC](#) manufacturer:*

Other Similar products are found below :

[01.001.5653.1](#) [70.340.1028.0](#) [70.360.2428.0](#) [70.364.4828.0](#) [70.810.1053.0](#) [72.360.1628.0](#) [73.363.6428.0](#) [8027AL20NL2CPXX](#) [FYCC8E1-2](#)  
[9221350022](#) [922AA2W-A9P-L](#) [PLS2](#) [GL-12F-C2.5X10\(LOT3\)](#) [972AB2XM-A3N-L](#) [972AB3XM-A3P-L](#) [PS3251](#) [980659-1](#) [QT-12](#) [E2E2-](#)  
[X5M41-M4](#) [E2E-X14MD1-G](#) [E2E-X2D1-G](#) [E2EX2ME2N](#) [E2EX3D1SM1N](#) [E2E-X4MD1-G](#) [E2E-X5E1-5M-N](#) [E2E-X5Y2-N](#) [E2E-X7D1-](#)  
[M1J-T-0.3M-N](#) [E2K-F10MC1](#) [5M](#) [EH-302](#) [EI3010TBOP](#) [EI5515NPAP](#) [MS605AU](#) [EP175-32000](#) [IFRM04N35B1/L](#) [IFRM04P1513/S35L](#)  
[IFRM06P1703/S35L](#) [IFRM08P1501/S35L](#) [IFRM12N17G3/L](#) [IFRM12P17G3/L](#) [IFRM12P3502/L](#) [IFRM12P37G1/S14L](#) [ILFK12E9189/I02](#)  
[ILFK12E9193/I02](#) [IMM2582C](#) [OISN-013](#) [25.161.3253.0](#) [25.332.0653.1](#) [25.352.0653.0](#) [25.352.0753.0](#) [25.523.3253.0](#)