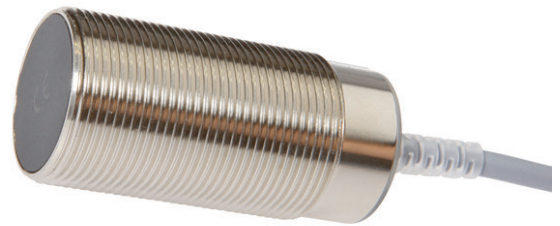


## IB305100

### INDUCTIVE SENSORS • NORM SWITCHING DISTANCE

sensor inductive, M30x1.5 60long, Flush, Sn: 10, Two-wire NO, Cable 2m PVC, IP67, Brass Nickel-plated



#### MECHANICAL FEATURES

Active area material of sensor	PA 6.6 (synthetic)
Alignment of cable entry	Axial
Ambient temperature	-25 °C ... 70 °C
Cable infeed	Axial
Cable length	2 m
Degree of protection (IP)	IP67
Design	Cylinder, screw-thread
Housing coating	Nickel-plated
Housing material	Brass
Material of cable sheath	PVC
Mechanical mounting condition for sensor	Flush
Pressure-proof	-
Sensor length	60 mm
Thread pitch	1.5 mm
Thread size, metric	30
Wire cross section	0.5 mm <sup>2</sup>

#### ELECTRICAL FEATURES

Cascadable	-
Hysteresis	15 %
Min. output current	2 mA
Norm measuring plate	30x30x1
Rated switching current	350 mA
Relative repeat accuracy	5 %
Short-circuit protection	+
Suitable for safety functions	-
Supply voltage	20 V ... 250 V
Switching distance	10 mm
Switching frequency	30 Hz
Type of electrical connection	Cable
Type of switching function	Normally open contact
Type of switching output	Two-wire
Voltage drop	5 V

## ELECTRICAL FEATURES

Voltage type AC/DC

With monitoring function of downstream devices -

### Other

Packaging dimensions 124.0mm x 35.0mm x 149.0mm

Shipping weight 0.23kg

Tariff code 85365080

### Classification

ipf product group 203

eClass 8.0 27270101

eClass 9.0 27270101

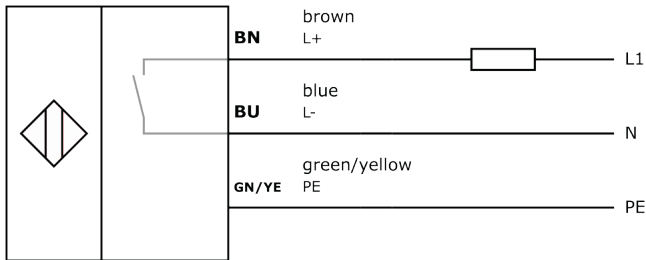
eClass 9.1 27270101

ETIM-5.0 EC002714

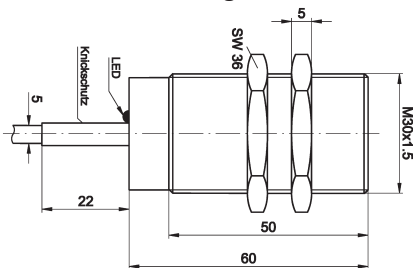
ETIM-6.0 EC002714

ETIM-7.0 EC002714

## Connection



## Dimensional drawing



## Installation



Mounting / installation may only be carried out by a qualified electrician!

## Disposal



## Safety warnings

Before initial operation, please make sure to follow all safety instructions that may be provided in the product information.

Never use these devices in applications where the safety of a person depends on their functionality.

LED lighting systems can generate intensive UV radiation, which can damage your eyes in case of improper use. The manufacturer cannot be held responsible for damages that result from improper use or connection.



## X-ON Electronics

Largest Supplier of Electrical and Electronic Components

*Click to view similar products for [Proximity Sensors](#) category:*

*Click to view products by [IPF ELECTRONIC](#) manufacturer:*

Other Similar products are found below :

[01.001.5653.1](#) [70.340.1028.0](#) [70.360.2428.0](#) [70.364.4828.0](#) [70.810.1053.0](#) [72.360.1628.0](#) [73.363.6428.0](#) [8027AL20NL2CPXX](#) [FYCC8E1-2](#)  
[9221350022](#) [922AA2W-A9P-L](#) [PLS2](#) [GL-12F-C2.5X10\(LOT3\)](#) [972AB2XM-A3N-L](#) [972AB3XM-A3P-L](#) [PS3251](#) [980659-1](#) [QT-12](#) [E2E2-](#)  
[X5M41-M4](#) [E2E-X14MD1-G](#) [E2E-X2D1-G](#) [E2EX2ME2N](#) [E2EX3D1SM1N](#) [E2E-X4MD1-G](#) [E2E-X5E1-5M-N](#) [E2E-X5Y2-N](#) [E2E-X7D1-](#)  
[M1J-T-0.3M-N](#) [E2K-F10MC1](#) [5M](#) [EH-302](#) [EI3010TBOP](#) [EI5515NPAP](#) [MS605AU](#) [EP175-32000](#) [IFRM04N35B1/L](#) [IFRM04P1513/S35L](#)  
[IFRM06P1703/S35L](#) [IFRM08P1501/S35L](#) [IFRM12N17G3/L](#) [IFRM12P17G3/L](#) [IFRM12P3502/L](#) [IFRM12P37G1/S14L](#) [ILFK12E9189/I02](#)  
[ILFK12E9193/I02](#) [IMM2582C](#) [OISN-013](#) [25.161.3253.0](#) [25.332.0653.1](#) [25.352.0653.0](#) [25.352.0753.0](#) [25.523.3253.0](#)