

IN804300

INDUCTIVE SENSORS • NORM SWITCHING DISTANCE

sensor inductive, Ø80mm 40long, Non-flush, Sn: 55, 20-250V AC, Two-wire Anticoincidence, Cable 2m PVC, IP67, PBT



MECHANICAL FEATURES

| | |
|--|------------------|
| Active area material of sensor | PBT |
| Alignment of cable entry | Axial |
| Ambient temperature | -25 °C ... 75 °C |
| Cable infeed | Axial |
| Cable length | 2 m |
| Degree of protection (IP) | IP67 |
| Design | Cylinder plain |
| Housing material | PBT |
| Material of cable sheath | PVC |
| Mechanical mounting condition for sensor | Non-flush |
| Number of cores | 2 |
| Pressure-proof | - |
| Sensor diameter | 80 mm |
| Sensor length | 40 mm |

ELECTRICAL FEATURES

| | |
|-----------------------------------|-----------------|
| Cascadable | - |
| Correction factor (aluminum) | 0.4 |
| Correction factor (brass) | 0.4 |
| Correction factor (copper) | 0.3 |
| Correction factor (St37) | 1 |
| Correction factor (stainl. steel) | 0.7 |
| No-load current | 2.5 mA |
| Rated switching current | 400 mA |
| Reverse polarity protection | + |
| Suitable for safety functions | - |
| Supply voltage | 20 V ... 250 V |
| Switching distance | 55 mm |
| Switching frequency | 10 Hz |
| Type of electrical connection | Cable |
| Type of switching function | Anticoincidence |
| Type of switching output | Two-wire |
| Voltage drop | 6 V |

ELECTRICAL FEATURES

| | |
|--|----|
| Voltage type | AC |
| With LED display | + |
| With monitoring function of downstream devices | - |

OTHER FEATURES

| | |
|---------------|---|
| Areas inquiry | + |
|---------------|---|

Other

| | |
|----------------------|----------------------|
| Packaging dimensions | 160mm x 40mm x 220mm |
| Shipping weight | 0.54kg |
| Tariff code | 85365080 |

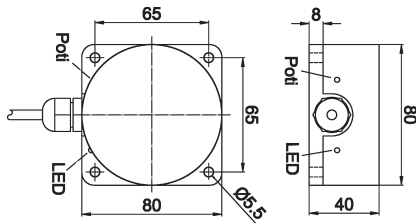
Classification

| | |
|-------------------|----------|
| ipf product group | 203 |
| eClass 8.0 | 27270101 |
| eClass 9.0 | 27270101 |
| eClass 9.1 | 27270101 |
| ETIM-5.0 | EC002714 |
| ETIM-6.0 | EC002714 |
| ETIM-7.0 | EC002714 |

Connection



Dimensional drawing



Installation



Mounting / installation may only be carried out by a qualified electrician!

Disposal



Safety warnings

Before initial operation, please make sure to follow all safety instructions that may be provided in the product information.

Never use these devices in applications where the safety of a person depends on their functionality.
LED lighting systems can generate intensive UV radiation, which can damage your eyes in case of improper use. The manufacturer cannot be held responsible for damages that result from improper use or connection.

X-ON Electronics

Largest Supplier of Electrical and Electronic Components

Click to view similar products for [Proximity Sensors](#) category:

Click to view products by [IPF ELECTRONIC](#) manufacturer:

Other Similar products are found below :

[01.001.5653.1](#) [70.340.1028.0](#) [70.360.2428.0](#) [70.364.4828.0](#) [70.810.1053.0](#) [72.360.1628.0](#) [73.363.6428.0](#) [8027AL20NL2CPXX](#) [FYCC8E1-2](#)
[9221350022](#) [922AA2W-A9P-L](#) [PLS2](#) [GL-12F-C2.5X10\(LOT3\)](#) [972AB2XM-A3N-L](#) [972AB3XM-A3P-L](#) [PS3251](#) [980659-1](#) [QT-12](#) [E2E2-](#)
[X5M41-M4](#) [E2E-X14MD1-G](#) [E2E-X2D1-G](#) [E2EX2ME2N](#) [E2EX3D1SM1N](#) [E2E-X4MD1-G](#) [E2E-X5E1-5M-N](#) [E2E-X5Y2-N](#) [E2E-X7D1-](#)
[M1J-T-0.3M-N](#) [E2FMX1R5D12M](#) [E2K-F10MC1](#) [5M](#) [EH-302](#) [EI3010TBOP](#) [EI5515NPAP](#) [MS605AU](#) [EP175-32000](#) [IFRM04N35B1/L](#)
[IFRM04P1513/S35L](#) [IFRM06P1703/S35L](#) [IFRM08P1501/S35L](#) [IFRM12N17G3/L](#) [IFRM12P17G3/L](#) [IFRM12P3502/L](#) [IFRM12P37G1/S14L](#)
[ILFK12E9189/I02](#) [ILFK12E9193/I02](#) [IMM2582C](#) [OISN-013](#) [25.161.3253.0](#) [25.332.0653.1](#) [25.352.0653.0](#) [25.352.0753.0](#)