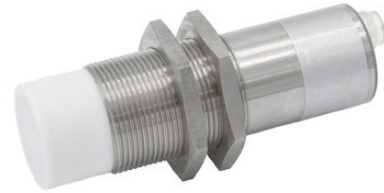


KN32E299

CAPACITIVE SENSORS • INCREASED AMBIENT TEMPERATURE

sensor capacitive, M32x1.5 112long, Non-flush, Sn: 20, 10-35V DC, -60-160°C, PNP/NPN Programmable/configurable, M12-connector 3pin PUR (Polyurethane), IP67, Stainless steel 1.4305, LED, Manual adjustment



MECHANICAL FEATURES

Active area material of sensor	Polytetrafluorethylene (PTFE)
Ambient temperature	-60 °C ... 160 °C
Ambient temperatures < -25°C	+
Degree of protection (IP)	IP67
Design	Cylinder, screw-thread
Housing material	Stainless steel 1.4305
Increased ambient temperatures > 80°C	+
Material of cable sheath	PUR (Polyurethane)
Mechanical mounting condition for sensor	Non-flush
Number of cores	3
Pressure-proof	-
Sensor length	112 mm
Thread length	40 mm
Thread pitch	1.5 mm
Thread size, metric	32

ELECTRICAL FEATURES

Cascadable	-
No-load current	15 mA
Number of pins	3
Rated switching current	400 mA
Residual ripple	10 %
Reverse polarity protection	+
Setting procedure	Manual adjustment
Short-circuit protection	+
Suitable for safety functions	-
Supply voltage	10 V ... 35 V
Switching distance	20 mm
Switching frequency	50 Hz
Type of electrical connection	M12-connector
Type of switching function	Programmable/configurable
Type of switching output	PNP/NPN
Voltage drop	2 V

ELECTRICAL FEATURES

Voltage type	DC
With LED display	+
With monitoring function of downstream devices	-

Other

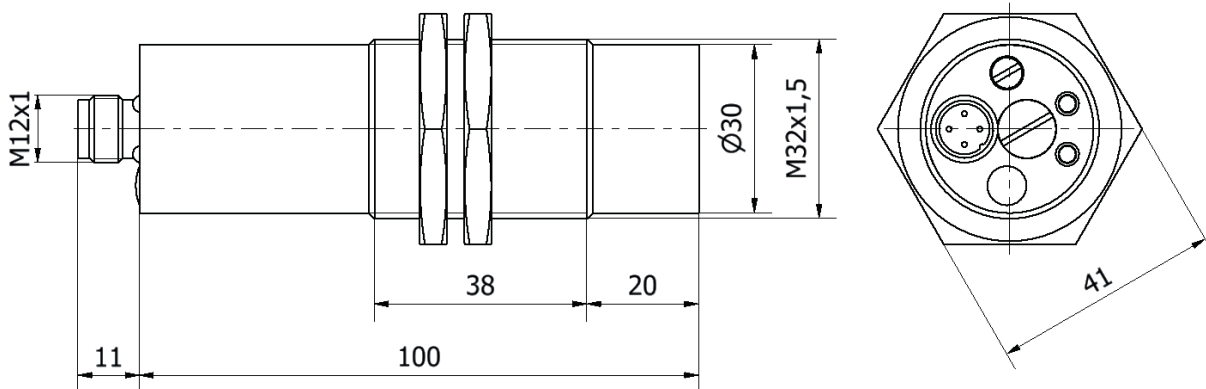
Packaging dimensions	70mm x 40mm x 125.0mm
Shipping weight	0.23kg
Tariff code	85365019

Classification

ipf product group	700
eClass 8.0	27270102
eClass 9.0	27270102
eClass 9.1	27270102
ETIM-5.0	EC002715
ETIM-6.0	EC002715
ETIM-7.0	EC002715

Connection

Dimensional drawing



Installation

Disposal



Mounting / installation may only be carried out by a qualified electrician!



Safety warnings

Before initial operation, please make sure to follow all safety instructions that may be provided in the product information. Never use these devices in applications where the safety of a person depends on their functionality. LED lighting systems can generate intensive UV radiation, which can damage your eyes in case of improper use. The manufacturer cannot be held responsible for damages that result from improper use or connection.

X-ON Electronics

Largest Supplier of Electrical and Electronic Components

Click to view similar products for [Proximity Sensors](#) category:

Click to view products by [IPF ELECTRONIC](#) manufacturer:

Other Similar products are found below :

[01.001.5653.1](#) [70.340.1028.0](#) [70.360.2428.0](#) [70.364.4828.0](#) [70.810.1053.0](#) [72.360.1628.0](#) [73.363.6428.0](#) [8027AL20NL2CPXX](#) [FYCC8E1-2](#)
[9221350022](#) [922AA2W-A9P-L](#) [PLS2](#) [GL-12F-C2.5X10\(LOT3\)](#) [972AB2XM-A3N-L](#) [972AB3XM-A3P-L](#) [PS3251](#) [980659-1](#) [QT-12](#) [E2E2-](#)
[X5M41-M4](#) [E2E-X14MD1-G](#) [E2E-X2D1-G](#) [E2EX2ME2N](#) [E2EX3D1SM1N](#) [E2E-X4MD1-G](#) [E2E-X5E1-5M-N](#) [E2E-X5Y2-N](#) [E2E-X7D1-](#)
[M1J-T-0.3M-N](#) [E2K-F10MC1](#) [5M](#) [EH-302](#) [EI3010TBOP](#) [EI5515NPAP](#) [MS605AU](#) [EP175-32000](#) [IFRM04N35B1/L](#) [IFRM04P1513/S35L](#)
[IFRM06P1703/S35L](#) [IFRM08P1501/S35L](#) [IFRM12N17G3/L](#) [IFRM12P17G3/L](#) [IFRM12P3502/L](#) [IFRM12P37G1/S14L](#) [ILFK12E9189/I02](#)
[ILFK12E9193/I02](#) [IMM2582C](#) [OISN-013](#) [25.161.3253.0](#) [25.332.0653.1](#) [25.352.0653.0](#) [25.352.0753.0](#) [25.523.3253.0](#)