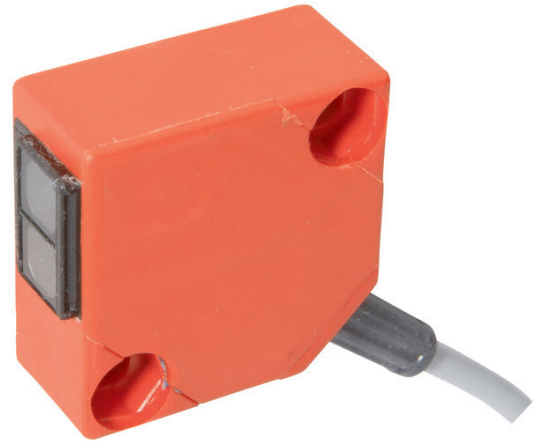


## OT150105

### OPTICAL SENSORS • DIFFUSE REFLECTION SENSORS WITH INTENSITY DIFFERENTIATION

sensor optical, diffuse-reflection sensor, 30x30x15mm, Sn: 0-600, 10-35V DC, 1x PNP NO (NO), Cable 2m PVC, IP65, PBTP+Glass, 1kHz, Infrared light, Point, Manual adjustment



#### MECHANICAL FEATURES

|   |                      |
|---|----------------------|
| Ambient temperature                         | -25 °C ... 55 °C     |
| Cable length                                | 2 m                  |
| Degree of protection (IP)                   | IP65                 |
| Design                                      | Cuboid               |
| Housing material                            | PBTP                 |
| Material of cable sheath                    | PVC                  |
| Material of optical surface                 | Glass                |
| Number of cores                             | 3                    |
| Reflector included in the scope of delivery | -                    |
| Sensor height                               | 30 mm                |
| Sensor length                               | 30 mm                |
| Sensor width                                | 15 mm                |
| Volume                                      | Small                |
| Wire cross section                          | 0.14 mm <sup>2</sup> |
| With interchangeable lens                   | -                    |

#### ELECTRICAL FEATURES

|                                    |                    |
|------------------------------------|--------------------|
| Alarm output                       | -                  |
| Clock frequency of the transmitter | 15 kHz             |
| Decay time                         | 0.5 ms             |
| Equipment protection class         | Protection class 3 |
| High repeat accuracy               | -                  |
| Hysteresis                         | 10 %               |
| Interference suppression           | -                  |
| Max. switching distance            | 600 mm             |
| No-load current                    | 15 mA              |
| Number of switching outputs        | 1                  |
| Operating voltage                  | 10 V ... 35 V      |
| Pre-failure message                | -                  |
| Rated switching current            | 200 mA             |
| Readiness delay                    | 100 ms             |
| Residual ripple                    | 20 %               |
| Response time                      | 0.5 ms             |

**ELECTRICAL FEATURES**

|  |                            |
|--|----------------------------|
| Reverse polarity protection                    | +                          |
| Scanning function                              | Light switching            |
| Sensing range                                  | 0 mm ... 600 mm            |
| Setting procedure                              | Manual adjustment          |
| Short-circuit protection                       | +                          |
| Suitable for safety functions                  | -                          |
| Switching frequency                            | 1000 Hz                    |
| Type of electrical connection                  | Cable                      |
| Type of switching function                     | Normally open contact (NO) |
| Type of switching output                       | PNP                        |
| Voltage drop                                   | 2 V                        |
| Voltage type                                   | DC                         |
| With communication interface, RS-232           | -                          |
| With LED display                               | +                          |
| With monitoring function of downstream devices | -                          |
| With other analog output                       | -                          |
| With restart lock                              | -                          |
| With time function                             | -                          |

**OPTICAL FEATURES**

|                           |                |
|---------------------------|----------------|
| Light source              | Infrared light |
| Wavelength of the sensor  | 880 nm         |
| Light exit                | Axial          |
| Light beam form           | Point          |
| Small light beam diameter | -              |
| Line scanner              | -              |

**OTHER FEATURES**

|                     |   |
|---------------------|---|
| Feeding technology  | + |
| For gloss queries   | - |
| Is line scan camera | - |

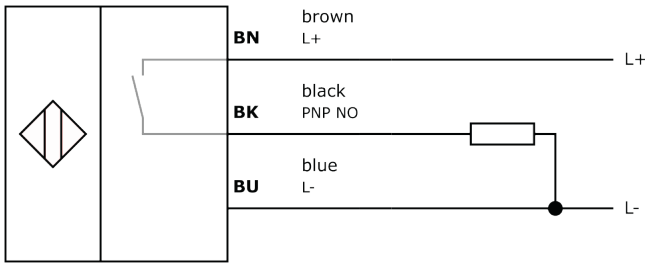
**Other**

|                      |                        |
|----------------------|------------------------|
| Packaging dimensions | 180mm x 25.0mm x 210mm |
| Shipping weight      | 0.06kg                 |
| Tariff code          | 85365019               |

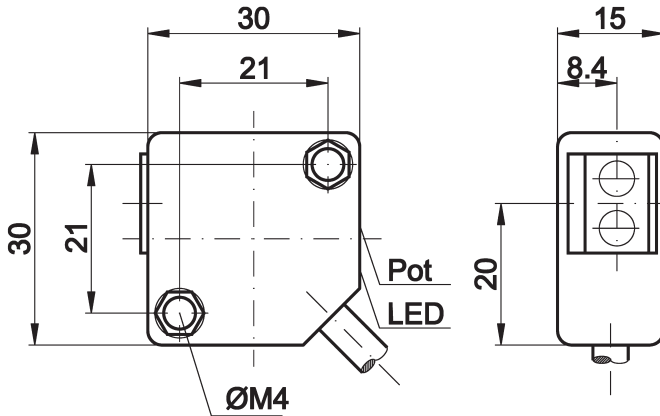
**Classification**

|                   |          |
|-------------------|----------|
| ipf product group | 100      |
| eClass 8.0        | 27270903 |
| eClass 9.0        | 27270903 |
| eClass 9.1        | 27270903 |
| ETIM-5.0          | EC001821 |
| ETIM-6.0          | EC001821 |
| ETIM-7.0          | EC001821 |

## Connection



## Dimensional drawing



## Installation



Mounting / installation may only be carried out by a qualified electrician!

## Disposal



## Safety warnings

Before initial operation, please make sure to follow all safety instructions that may be provided in the product information. Never use these devices in applications where the safety of a person depends on their functionality. LED lighting systems can generate intensive UV radiation, which can damage your eyes in case of improper use. The manufacturer cannot be held responsible for damages that result from improper use or connection.

## X-ON Electronics

Largest Supplier of Electrical and Electronic Components

*Click to view similar products for [Photoelectric Sensors](#) category:*

*Click to view products by [IPF ELECTRONIC](#) manufacturer:*

Other Similar products are found below :

[7442AD2X5FRX](#) [EX-19B-LP](#) [7443AR0X5FRX](#) [7452AD4D4NNX](#) [F3WD052C5M](#) [7655AR-04-F-1-2-RX](#) [7694ADE04DS2X](#) [FE7C-FRC6S-M](#) [PM-R24-R](#) [Q45VR2FPQ](#) [E3JUXM4MN](#) [E3S3LE21](#) [E3SCT11M1J03M](#) [E3VDS70C43S](#) [E3XNM16](#) [BR23P](#) [HOA6563-001](#) [OJ-3307-30N8](#) [OS-311A-30](#) [P34036](#) [P60001](#) [PB10CNT15PO](#) [S14132](#) [S52101](#) [S56258](#) [SH-21E](#) [SH-32R](#) [FD-SN500](#) [SU-79](#) [T36342](#) [T40300](#) [T60001](#) [PD60CNX20BP](#) [FX-302-HY](#) [PX-22](#) [PZ2-51P](#) [CYNUTX10](#) [UZH802](#) [UZH803](#) [UZFRG1](#) [UZFRG4](#) [UZFRT4](#) [UZFTT8](#) [ZX-XC4A4M](#) [E3D-R3Y1](#) [E3E23Y2US](#) [E3E-R1Y2](#) [E3SDS20E1](#) [E3TFD14N](#) [E3XR-CC4](#)