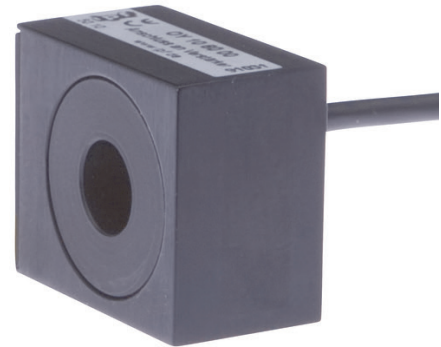


## OY106000

### OPTICAL SENSORS • RING LIGHT BARRIERS

sensor optical, Ring sensor, 30x20x35mm, ring 10.6, Anschluss an Verstärker, Cable 0.5m, Aluminum Anodised, Infrared light



#### MECHANICAL FEATURES

Ambient temperature	0 °C ... 50 °C
Cable length	0.5 m
Design	Ring-shaped
Housing coating	Anodized
Housing material	Aluminum
Reflector included in the scope of delivery	-
Ring diameter	10.6 mm
Sensor height	30 mm
Sensor length	20 mm
Sensor width	35 mm
Version	Ring sensor

#### ELECTRICAL FEATURES

Connection to amplifier	+
No-load current	60 mA
Setting procedure	Manual adjustment
Suitable for safety functions	-
Type of electrical connection	Cable
With time function	-

#### OPTICAL FEATURES

Light source	Infrared light
Wavelength of the sensor	880 nm
Resolution	1000 µm

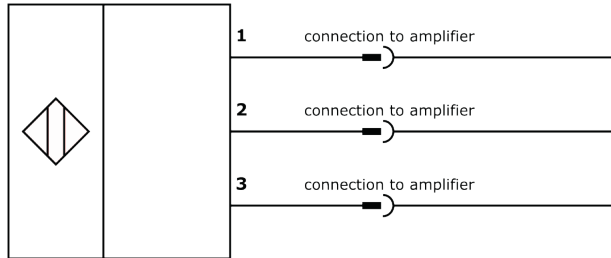
#### Other

Packaging dimensions	43.0mm x 43.0mm x 105.0mm
Shipping weight	0.07kg
Tariff code	85365019

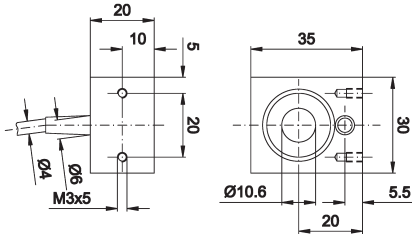
## Classification

ipf product group	111
eClass 8.0	27270901
eClass 9.0	27270901
eClass 9.1	27270901
ETIM-5.0	EC002716
ETIM-6.0	EC002716
ETIM-7.0	EC002716

## Connection



## Dimensional drawing



## Installation



Mounting / installation may only be carried out by a qualified electrician!

## Disposal



## Safety warnings

Before initial operation, please make sure to follow all safety instructions that may be provided in the product information. Never use these devices in applications where the safety of a person depends on their functionality. LED lighting systems can generate intensive UV radiation, which can damage your eyes in case of improper use. The manufacturer cannot be held responsible for damages that result from improper use or connection.

## X-ON Electronics

Largest Supplier of Electrical and Electronic Components

*Click to view similar products for [Photoelectric Sensors](#) category:*

*Click to view products by [IPF ELECTRONIC](#) manufacturer:*

Other Similar products are found below :

[7442AD2X5FRX](#) [EX-19B-LP](#) [7443AR0X5FRX](#) [7452AD4D4NNX](#) [F3WD052C5M](#) [7694ADE04DS2X](#) [FE7C-FRC6S-M](#) [FX-305](#) [PM-R24-R](#)  
[Q45VR2FPQ](#) [13104RQD07](#) [E3JUXM4MN](#) [E3L2DC4](#) [E3S3LE21](#) [E3SDS20E21](#) [E3VDS70C43S](#) [E3XNM16](#) [BR23P](#) [HOA6563-001](#) [OJ-](#)  
[3307-30N8](#) [OS-311A-30](#) [P32013](#) [P34036](#) [P43004](#) [P60001](#) [PB10CNT15PO](#) [S14132](#) [935286-000](#) [S52101](#) [S56258](#) [FD-SN500](#) [FE7B-](#)  
[FDRB6-M](#) [SU-79](#) [T36342](#) [T40300](#) [T60001](#) [PD60CNX20BP](#) [FX-302-HY](#) [FZS](#) [PM-T64W](#) [PZ2-51P](#) [CX-491-P-J](#) [CYNUTX10](#) [UZB802](#)  
[UZB803](#) [UZFRG1](#) [UZFRG4](#) [UZFRT4](#) [UZFTT8](#) [XUM2BKCNL2T](#)