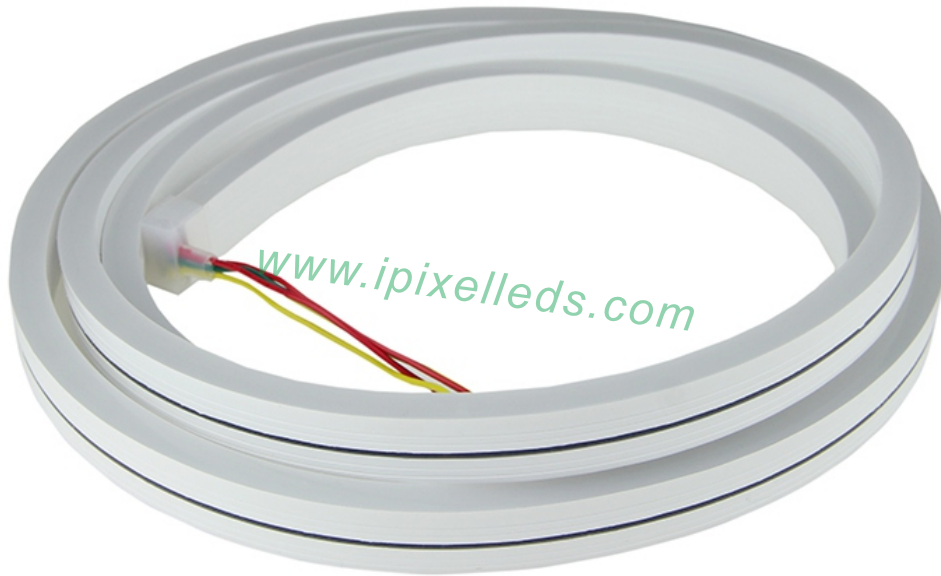


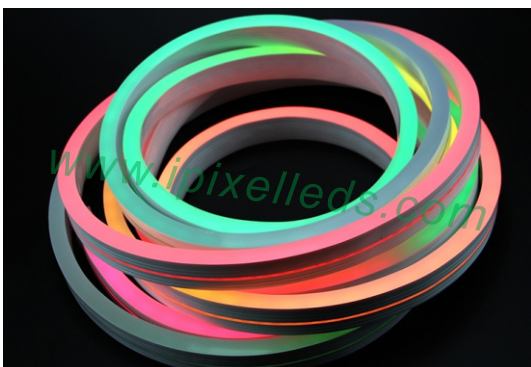


Individually Control RGBW LED Neon Flex



Product Description

this is side emitting Neon strip An-ti fire silicon material with diffused color on top side inside part is the SK6812 addressable RGBW LED flex 60pcs of LEDs and Pixels per meter ,so each LED can be cut down and useful when you custom designing a size /length



no light shadow of each single or magic color

it comes 5meter in a reel and IP65 rated ,meanwhile

it could be custom made in different size

it has multi CCT of White, Warm white around 3000K ,

Nature white around 6000K



Product Datasheet

Product Number	N010060CA4SA1
LED Quantity	60 leds/m
Material	Silicon
Control (IC)	SK6812
Luminance /M	R: 83 G: 202 B: 68 W:237/WW:295
Color Temperature	WW: 2800-3200K / W: 5000-5500K
Cutting Mark	16.6MM
Operating Voltage	DC5V
Power (W)	14W/M
Dimension	5000* 10* 20
IP	IP65
Net Weight	1.5kg/roll (5m)
Operation Temperature	- 40 ~ 50 °C

Application



Outdoor Illumination, indoor decoration

Architectural decoration

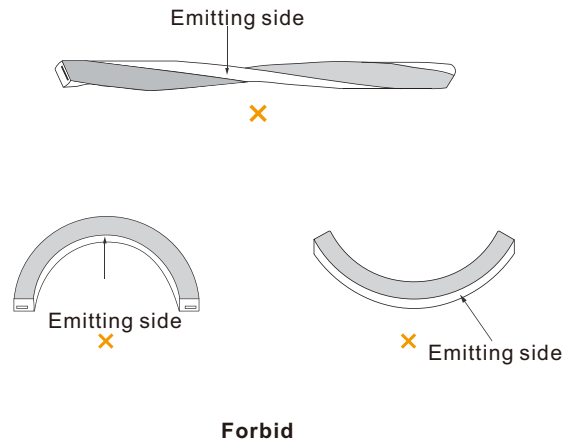
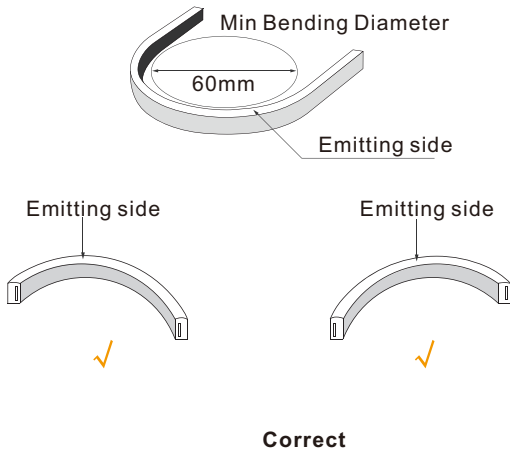


Neon Signboard

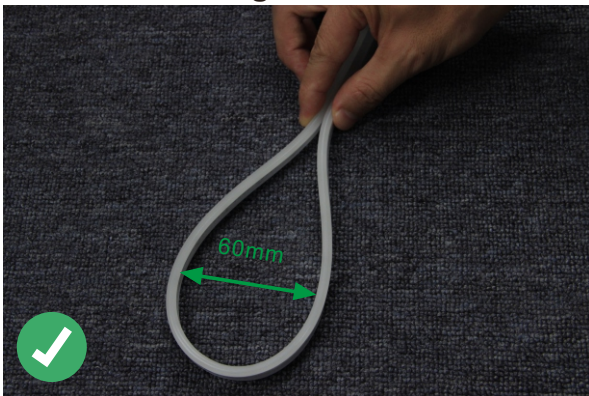
Christmas lighting



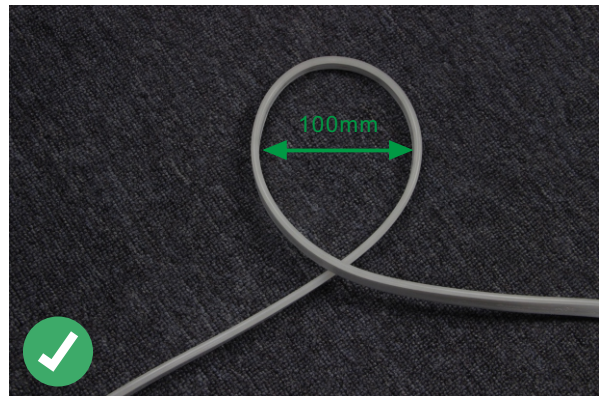
Correct bending way



Correct bending



Face to the lighting surface and fold the strip.
The minimum bending diameter is 60mm



Lighting surface upwards and the strip can be bent to right or left naturally, The minimum bending diameter is 100mm

Incorrect bending way



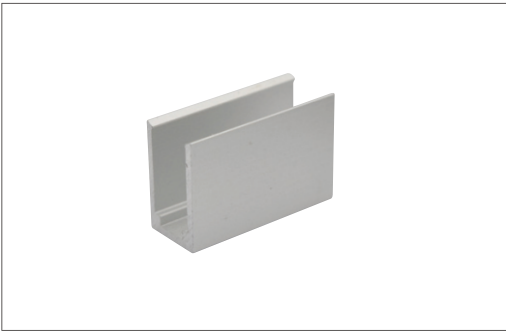
Face to the side surface (as the picture shows),
Do not bend it downward to damage the strip.



(as the picture shows) please do not twist the strip,
or it will be damaged



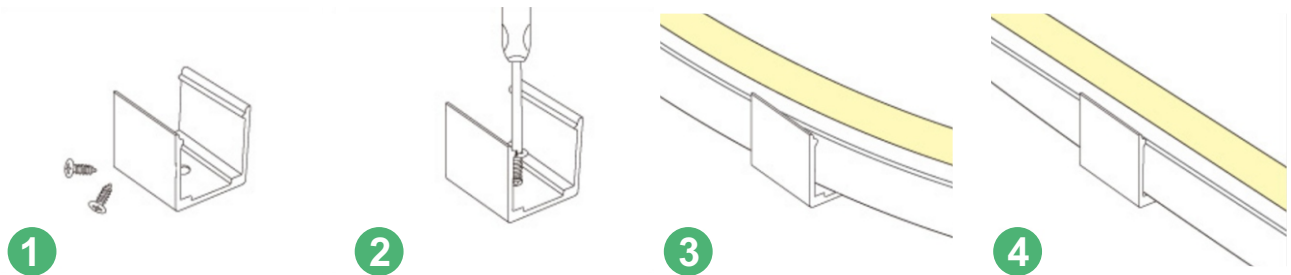
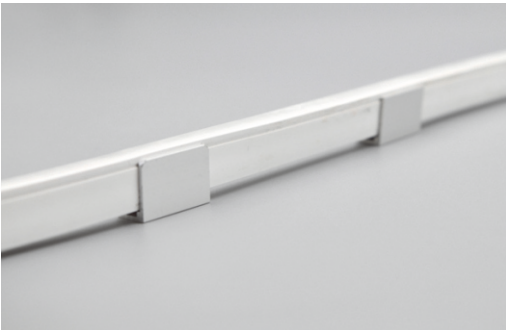
Installation



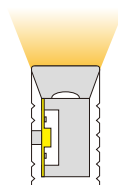
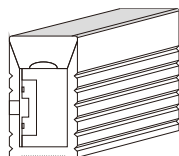
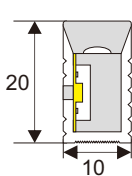
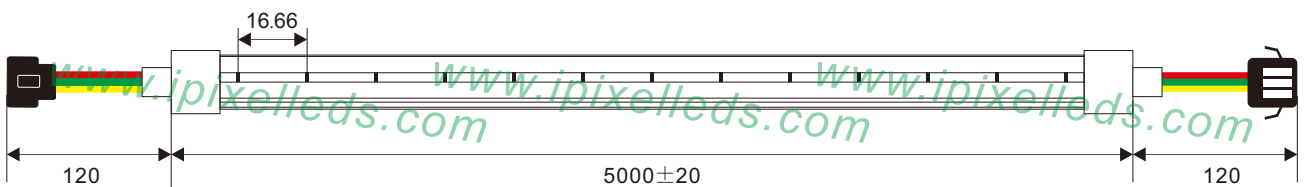
clips
50x8x13mm(LxWxH)



profile
1000x8x13mm(LxWxH)

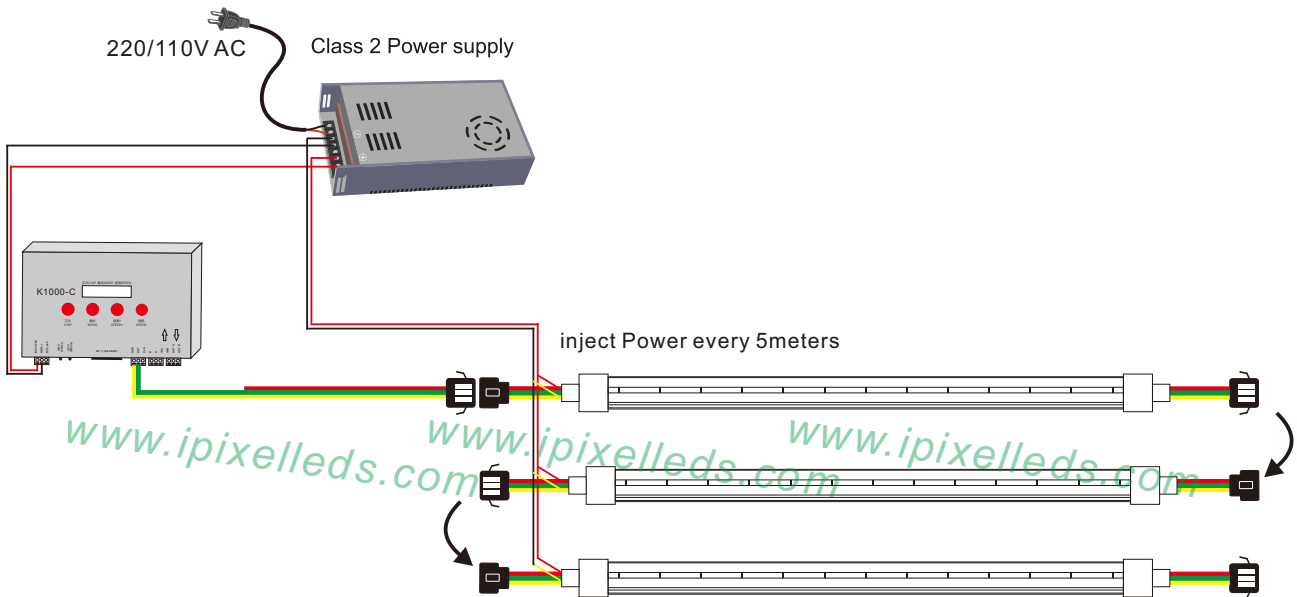


Outline Dimension (unit:mm)

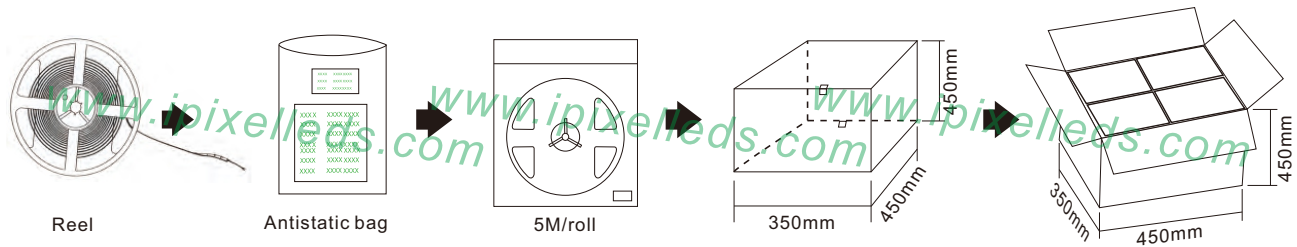




Connection



Product packaging



Product number	Standard length	Quantity / volume	outer carton size	Weight(kg)/reel
N010060CB4ST	5M	240 Reels	L450xW350xH450mm	1.5kg
/				/
/				/
/				/
/				/

X-ON Electronics

Largest Supplier of Electrical and Electronic Components

Click to view similar products for [LED Lighting Bars and Strips](#) category:

Click to view products by [IPIXEL LED](#) manufacturer:

Other Similar products are found below :

[ZLF0310W62524](#) [LF1D-F2F-2W-300](#) [00215258](#) [HH-SWW320F010W12-COB IP20](#) [HH-SWW320F010W24-COB IP20](#) [HH-SWW528F210W12-COB IP65](#) [HH-SG528F010W24-COB IP20](#) [LF2D-EN2F-2W-A](#) [LFBHL-SW827-24V-8S63-20](#) [N006120BC1LZ](#) (GOLDEN YELLOW) [S010060CB1LZ](#) (NEUTRAL WHITE IP65) [S010060CC1LZ](#) (WARM WHITE IP65) [2633830000](#) [HH-SX72F008W24-2835 CW WHITE PCB IP20](#) [HH-SX180F010W24 -2835 WW WHITE PCB IP20](#) [HH-SX72F008W24-2835 NW WHITE PCB IP20](#) [HH-SX144F008W24 -2835 NW WHITE PCB IP20](#) [HH-SX180F010W24 -2835 NW WHITE PCB IP20](#) [HH-SX144F008W24 -2835 CW WHITE PCB IP20](#) [HH-SX144F008W24 -2835 WW WHITE PCB IP20](#) [HH-SX180F010W24 -2835 CW WHITE PCB IP20](#) [N008120BB1LZ](#) (BLUE) [00219015](#) [10001611](#) [10001612](#) [10001613](#) [10001617](#) [10001618](#) [10001619](#) [10001622](#) [10001623](#) [10001655](#) [10001657](#) [10001664](#) [10001670](#) [10001675](#) [10001681](#) [10001683](#) [10001690](#) [PUUA-100LLL-NK2P](#) [QAUR1161L030](#) [HC-F12V-3535 PCBA](#) [HC-F12V-F50-3L-WS2811](#) [HC-F12V-WS2811-3535](#) [HC-F5V-144L-144LED-B-WS2813 IP20](#) [HC-F5V-144L-144LED-B-WS2813 IP65](#) [HC-F5V-144L-144LED-W-WS2813 IP20](#) [HC-F5V-30L-30LED-B-WS2813 IP20](#) [HC-F5V-30L-30LED-W-WS2813 IP20](#) [HC-F5V-60L-60LED-B-WS2813 IP20](#)