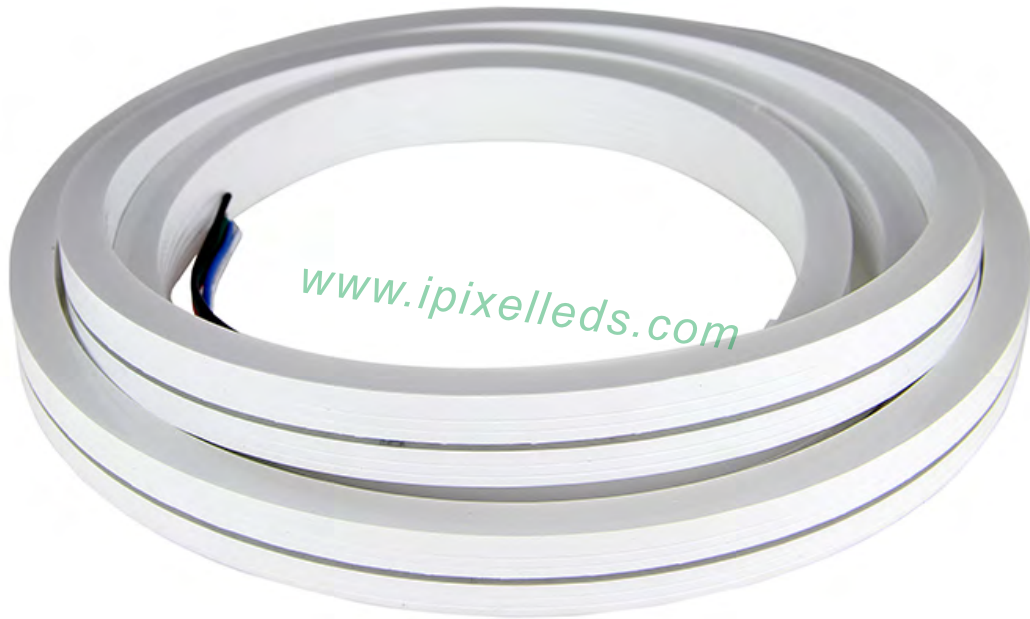




## PWM control RGBW LED Neon strip



### Product Description

Silicone Neon LED flex made by extrusion, white color

body, diffused color on the top side without light spot,

it's bendable within limited semidiameter, Anti-UV and salt

it's a 4 in 1 RGBW LED tape inside ,no Pixel control,



each small section can be cut down refer to

the black mark on the side of body

the standard size is 5meters included 10pcs mounting

clips 5Pin bare wire output from each side of the body



## Product Datasheet

Product Number	N010060CB4LZ	N010060CC4LZ
LED Type	SMD RGBW	
Material	Silicon	
Luminance/M	R: 30 G: 120 B: 20 W: 180	R: 91 G: 155 B: 37 W: 322
Color Temperature	WW: 2500-3000K/W: 5000-5500K	
CCT	RGBW	
Cutting Mark	50 MM	100 MM
Operating Voltage	DC12V	DC24V
Power (W)	15 W/M	19.2 W/M
Dimension	5000*10*20 MM	
IP	IP65	
Net Weight	1.2kg/roll (5mm)	
Operation Temperature	- 40 ~ 50 °C	

## Application



Hotels, restaurants, nights clubs.

Advertising signs, brightening.

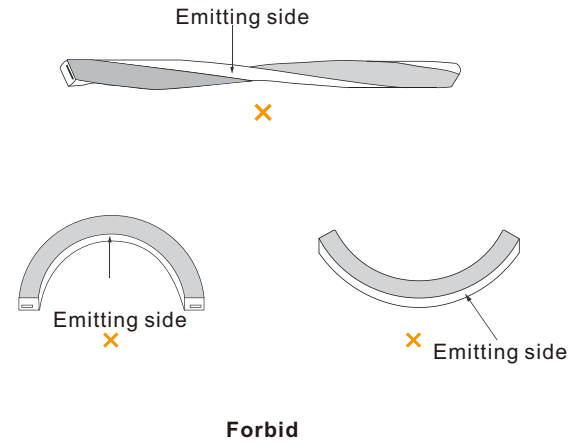
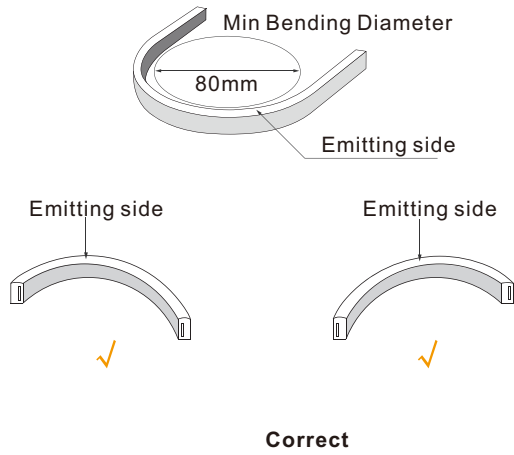


Back lighting, edge lighting.

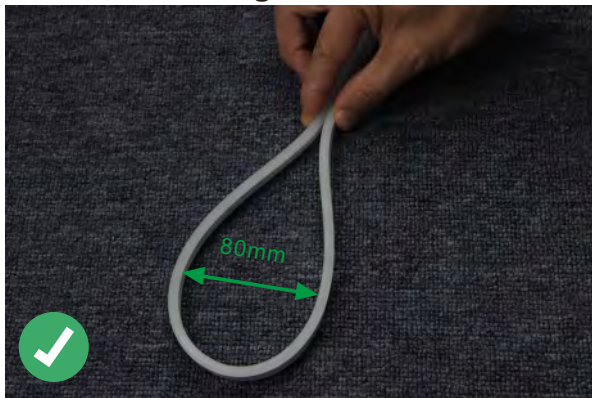
Dancefloor background.



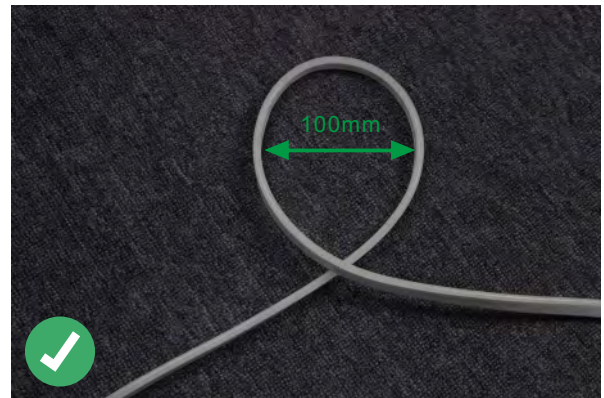
## Correct bending way



## Correct bending



Face to the lighting surface and fold the strip.  
The minimum bending diameter is 80mm



Lighting surface upwards and the strip can be bent to right or left naturally, The minimum bending diameter is 100mm

## Incorrect bending way



Face to the side surface (as the picture shows),  
Do not bend it downward to damage the strip.



(as the picture shows) please do not twist the strip,  
or it will be damaged



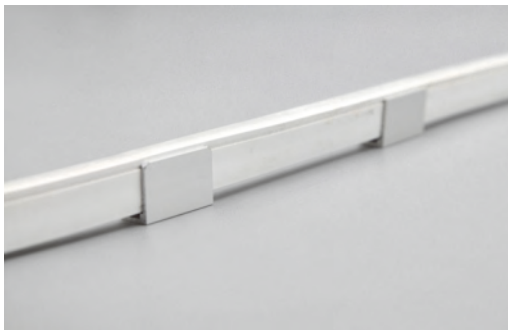
## Installation



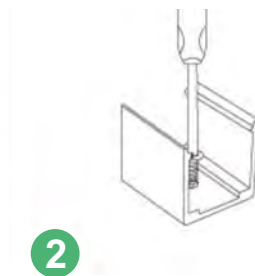
clips  
50x8x13mm(LxWxH)



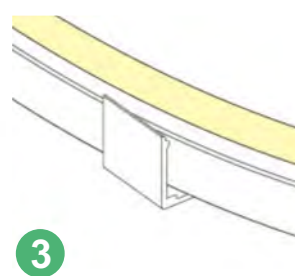
profile  
1000x8x13mm(LxWxH)



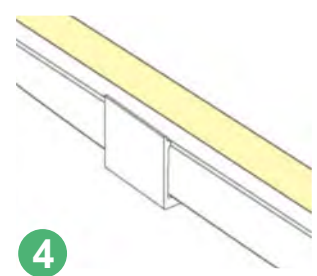
1



2

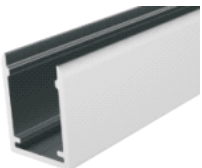





3



4

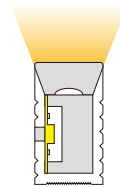
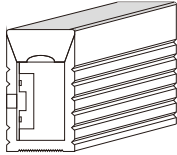
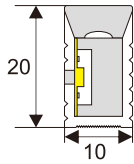
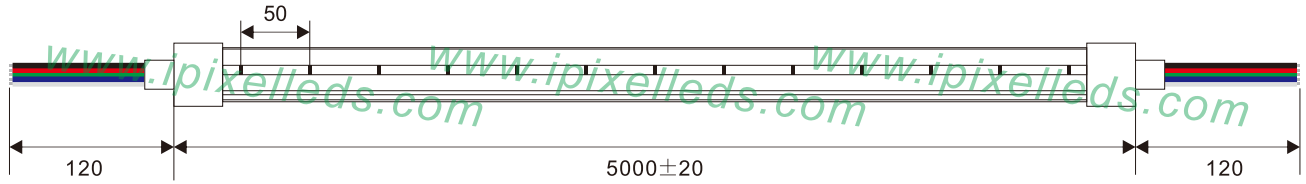
## Accessory(Excluded)

Name	Aluminum extrusion	Silicone glue	End cap	Mount clip
installation				
Remarks	L:1000 mm	10 ml/pc		

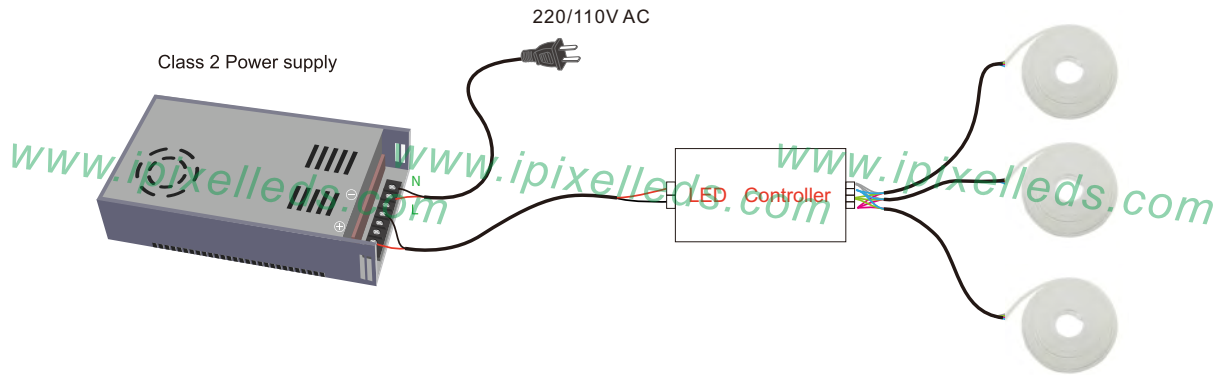


# iPixel LED Light Co., Ltd

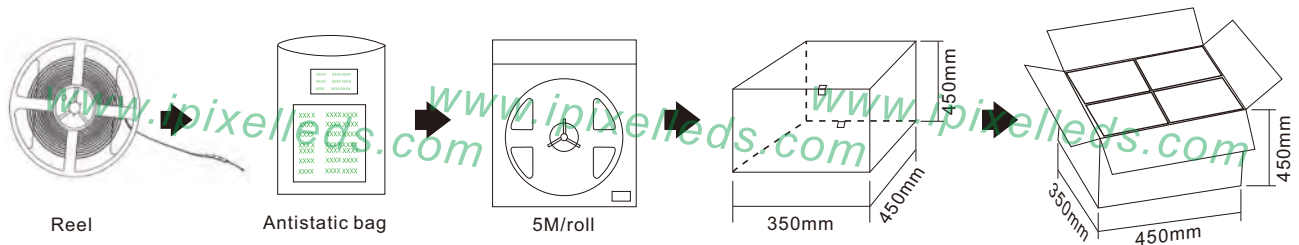
## Outline Dimension (unit:mm)



## Connection



## Product packaging



Product number	Standard length	Quantity / volume	outer carton size	Weight(kg)/reel
N010060CC4LZ	5M	240 Reels	L450xW350xH450mm	1.2kg
/				/
/				/
/				/
/				/
/				/

## X-ON Electronics

Largest Supplier of Electrical and Electronic Components

*Click to view similar products for [LED Lighting Bars and Strips](#) category:*

*Click to view products by [IPIXEL LED](#) manufacturer:*

Other Similar products are found below :

[ZLF0310W62524](#) [LF1D-F2F-2W-300](#) [00215258](#) [HH-SWW320F010W12-COB IP20](#) [HH-SWW320F010W24-COB IP20](#) [HH-SWW528F210W12-COB IP65](#) [HH-SG528F010W24-COB IP20](#) [LF2D-EN2F-2W-A](#) [10001622](#) [LFBHL-SW827-24V-8S63-20](#) [LFBHL-SW860-24V-8S63-20](#) [LFBHL-SW940-24V-8S63-20](#) [HH-SRGB60F010W24-5050M](#) [N006120BB1LZ \(BLUE\)](#) [N006120BB1LZ \(GREEN\)](#) [N006120BB1LZ \(RED\)](#) [N006120BC1LZ \(BLUE\)](#) [N006120BC1LZ \(GREEN\)](#) [N006120BC1LZ \(GOLDEN YELLOW\)](#) [N006120BC1LZ \(RED\)](#) [S010030CB3SB7](#) [S010030CB3SB7 \(BLACK PCB\)](#) [S010060CB1LZ \(NEUTRAL WHITE IP65\)](#) [S010060CB1LZ \(WARM WHITE IP65\)](#) [S010060CB3SB7](#) [S010060CC1LZ \(WARM WHITE IP65\)](#) [S012060CB4ST \(BLACK PCB\)](#) [2633830000](#) [HH-SX72F008W24-2835 CW WHITE PCB IP20](#) [HH-SX180F010W24 -2835 WW WHITE PCB IP20](#) [HH-SX72F008W24-2835 NW WHITE PCB IP20](#) [HH-SX144F008W24 -2835 NW WHITE PCB IP20](#) [HH-SX180F010W24 -2835 NW WHITE PCB IP20](#) [HH-SX144F008W24 -2835 CW WHITE PCB IP20](#) [HH-SX144F008W24 -2835 WW WHITE PCB IP20](#) [HH-SX180F010W24 -2835 CW WHITE PCB IP20](#) [N008120BB1LZ \(BLUE\)](#) [S010060CA3SA1](#) [SCS-120-CW](#) [00219015](#) [10001611](#) [10001612](#) [10001613](#) [10001617](#) [10001618](#) [10001619](#) [10001623](#) [10001655](#) [10001657](#) [10001664](#)