



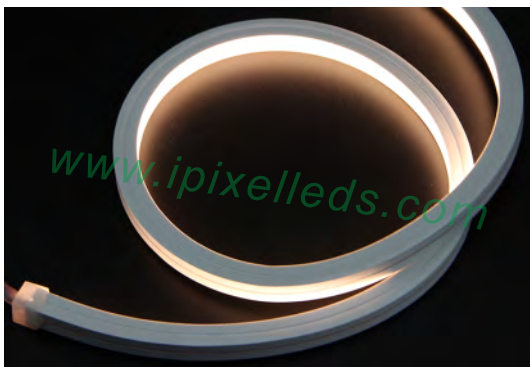
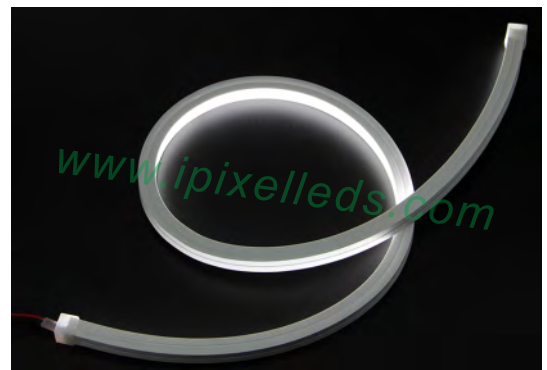
Front Side Emitting LED Neon Strip



Product Description

Static single color LED Neon flexible strip with silicone materials, super flexible and bendy.

It with a solid chunk of translucent silicone rubber as a diffuser, uniform light distribution.



SMD LED chip fire resistance, and the casing is Anti - UV,

Anti - Corrosion, very strong and durable.

The light is top view, and minimum cutting unit is 25mm,

minimum bending diameter is 100mm



Product Datasheet

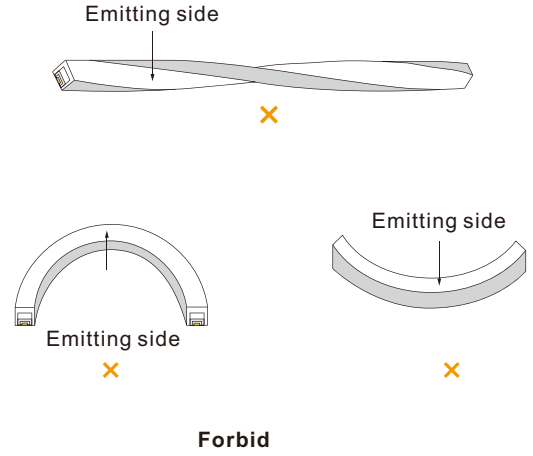
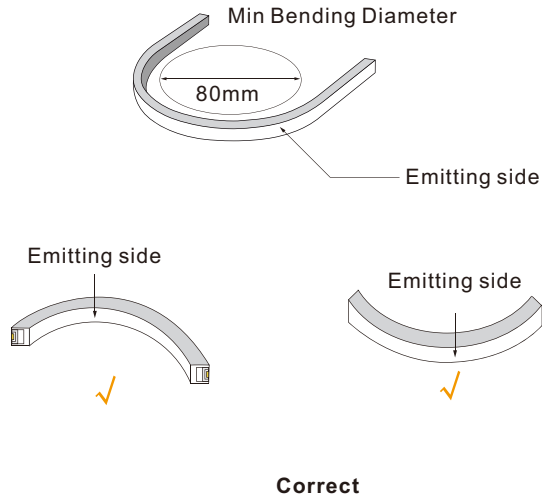
Product Number	N012120BB1LZ
LED Quantity	120 leds/m
Material	Silicon
LED Type	SMD 2835
CCT	Warm white : 2800-3200K ,White :5500-6500K
Emitting Direction	Front side
Lumens/m	697LM/750LM
Operating Voltage	DC12V
Power (W)	10W/M
Dimension	5000* 12* 12MM
IP	IP65
Net Weight	0.7kg/roll (5m)
Operation Temperature	- 40 ~ 50 °C

Application





Correct bending way



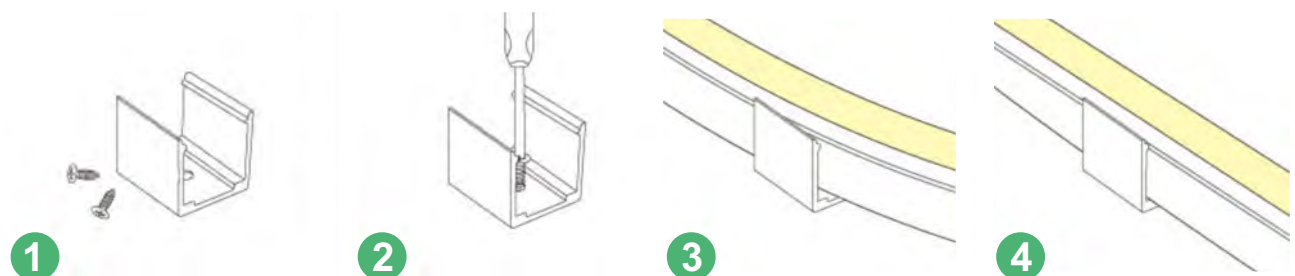
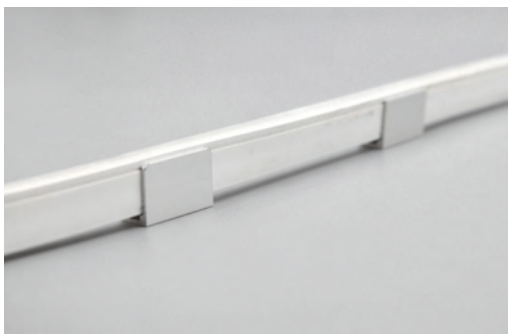
Installation



clips
30x14x14mm(LxWxH)



profile
1000x14x14mm(LxWxH)

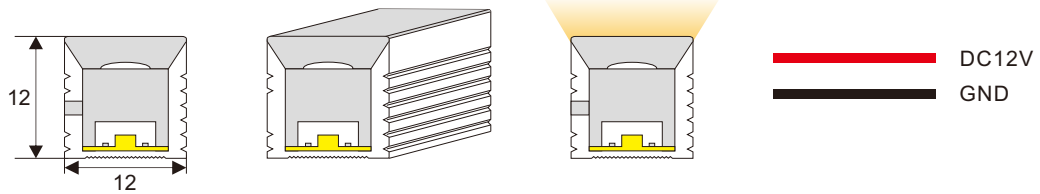
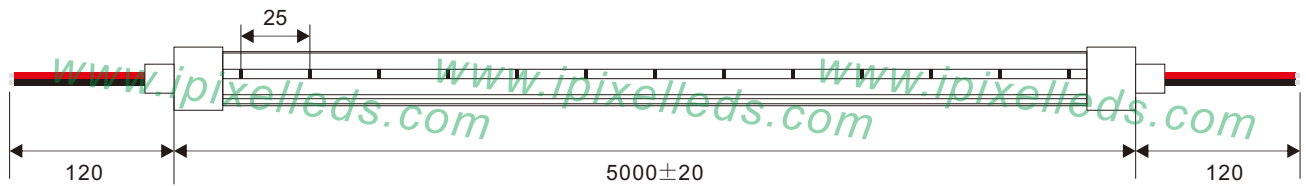




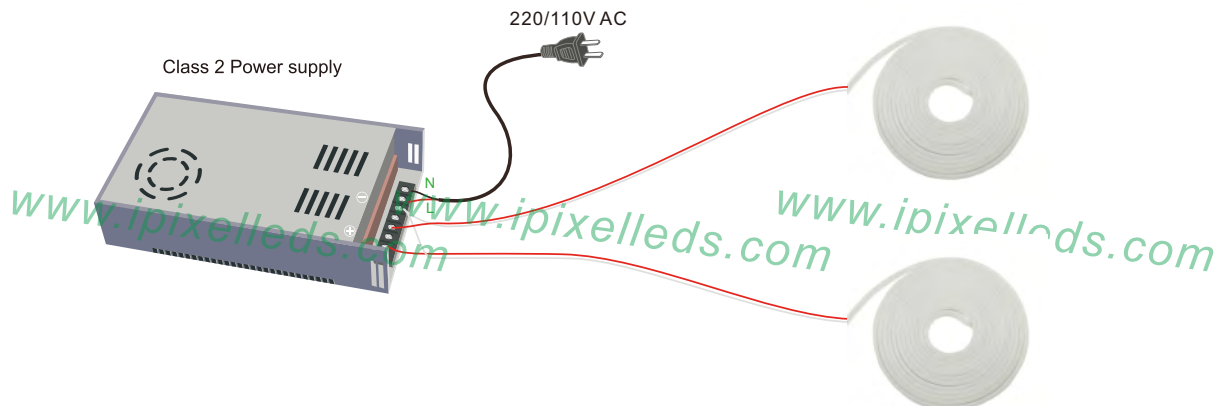
Accessory(Excluded)

Name	Aluminum clip	Aluminum card slot	Silicone glue	Front cap	Front cap
installation					
Remarks	L: 30 mm	L: 1000 mm	10 ml /pc		

Outline Dimension (unit:mm)

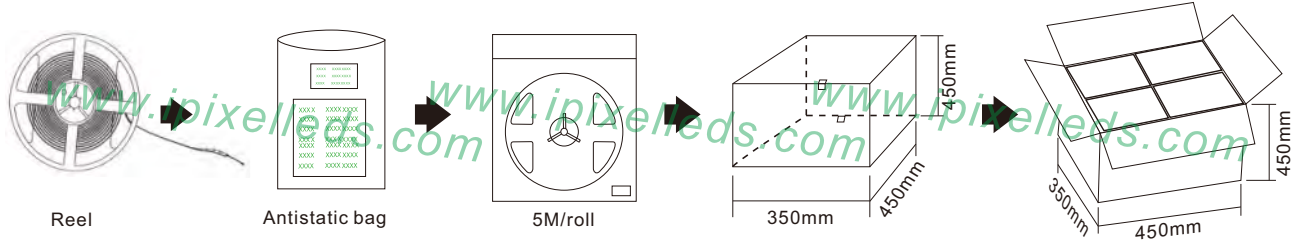


Connection





Product packaging



Product number	Standard length	Quantity / volume	outer carton size	Weight(kg)/reel
N012120BC1LZ	5M	240 Reels	L450xW350xH450mm	0.3kg
/				/
/				/
/				/
/				/
/				/

X-ON Electronics

Largest Supplier of Electrical and Electronic Components

Click to view similar products for [LED Lighting Bars and Strips](#) category:

Click to view products by [IPIXEL LED](#) manufacturer:

Other Similar products are found below :

[ZLF0310W62524](#) [LF1D-F2F-2W-300](#) [00215258](#) [HH-SWW320F010W12-COB IP20](#) [HH-SWW320F010W24-COB IP20](#) [HH-SWW528F210W12-COB IP65](#) [HH-SG528F010W24-COB IP20](#) [LF2D-EN2F-2W-A](#) [LFBHL-SW827-24V-8S63-20](#) [N006120BC1LZ \(GOLDEN YELLOW\)](#) [S010060CB1LZ \(NEUTRAL WHITE IP65\)](#) [S010060CC1LZ \(WARM WHITE IP65\)](#) [2633830000](#) [HH-SX72F008W24-2835 CW WHITE PCB IP20](#) [HH-SX180F010W24 -2835 WW WHITE PCB IP20](#) [HH-SX72F008W24-2835 NW WHITE PCB IP20](#) [HH-SX144F008W24 -2835 NW WHITE PCB IP20](#) [HH-SX180F010W24 -2835 NW WHITE PCB IP20](#) [HH-SX144F008W24 -2835 CW WHITE PCB IP20](#) [HH-SX144F008W24 -2835 WW WHITE PCB IP20](#) [HH-SX180F010W24 -2835 CW WHITE PCB IP20](#) [N008120BB1LZ \(BLUE\)](#) [00219015](#) [10001611](#) [10001612](#) [10001613](#) [10001617](#) [10001618](#) [10001619](#) [10001622](#) [10001623](#) [10001655](#) [10001657](#) [10001664](#) [10001670](#) [10001675](#) [10001681](#) [10001683](#) [10001690](#) [PUUA-100LLL-NK2P](#) [QAUR1161L030](#) [HC-F12V-3535 PCBA](#) [HC-F12V-F50-3L-WS2811](#) [HC-F12V-WS2811-3535](#) [HC-F5V-144L-144LED-B-WS2813 IP20](#) [HC-F5V-144L-144LED-B-WS2813 IP65](#) [HC-F5V-144L-144LED-W-WS2813 IP20](#) [HC-F5V-30L-30LED-B-WS2813 IP20](#) [HC-F5V-30L-30LED-W-WS2813 IP20](#) [HC-F5V-60L-60LED-B-WS2813 IP20](#)