



## 15\*15mm RGB Silicon LED Neon strip



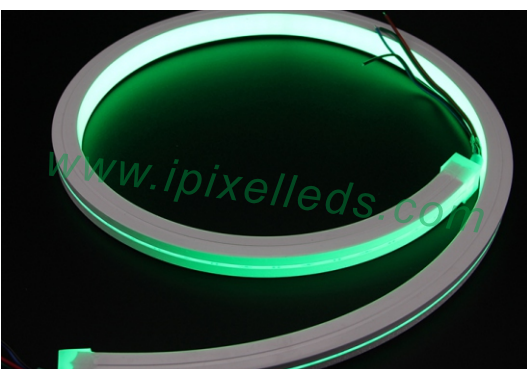
### Product Description

This is a RGB LED Neon flex strip without Pixel control, it's can be shaped,bent to logo or sign; DIY install and cuttable as the length you want.

Cutting marks are clearly visible, Minimum cutting unit: every 31mm,

Typical length is 5m(Length per roll can be customized).

Uniform luminance, no light spots, IP65 Silicon extrusion waterproof.



Supply voltage is DC12V ,Lead wire should be connected correctly according to colors that connecting diagram offers.

easy to use and Safe to touch and Operate.

High brightness, Impact Resistant, Anti-yellowing, good transparency

High efficiency SMD RGB LED chip ,Fire resistance, Anti - UV, Anti - Corrosion and deformation resistance



## Product Datasheet

Product Number	N015120TB3PZ
CCT	RGB
Material	Silicon
Control (IC)	PWM
Luminance /M	R: 76 G: 210 B: 37
Emitting Direction	Front side
Cutting Mark	25MM
Operating Voltage	DC12V
Power (W)	14.4W/M
Dimension	5000* 15* 15MM
IP	IP65
Net Weight	1.25kg/roll (5m)
Operation Temperature	- 20 ~ 60 °C

## Application



Hotels, restaurants, nights clubs.

Advertising signs, brightening.

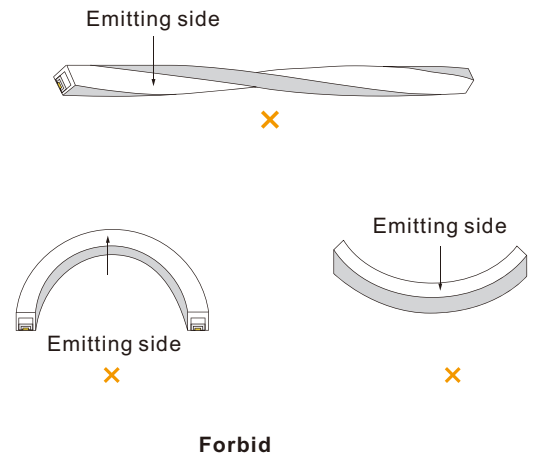
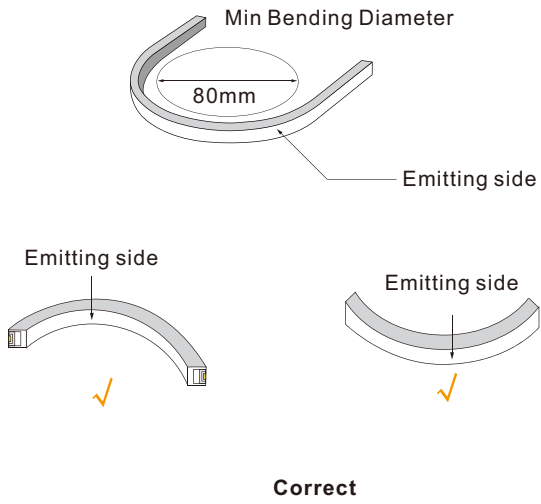


Back lighting, edge lighting.

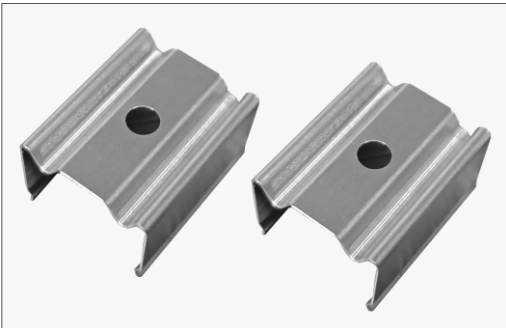
Dancefloor background.



## Correct bending way



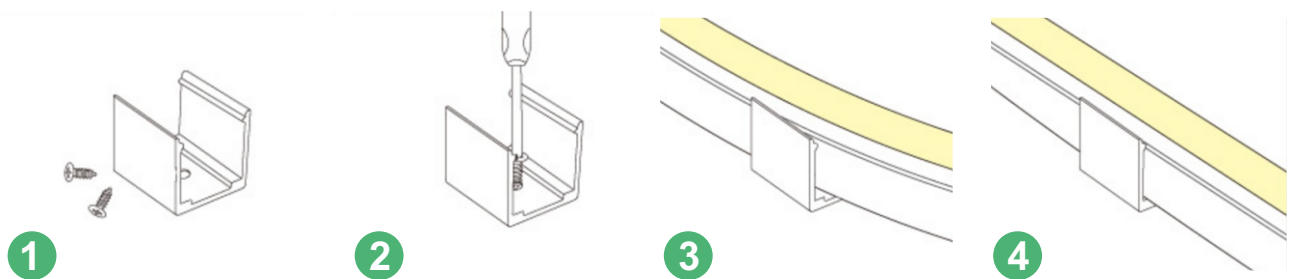
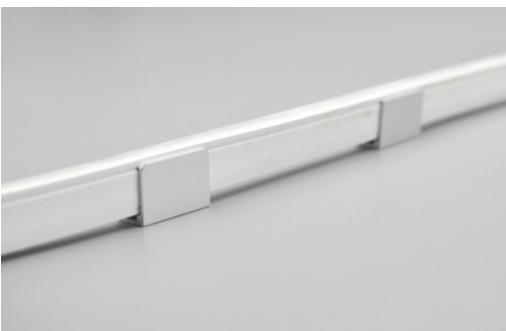
## Installation



clips  
15x15x10mm(LxWxH)

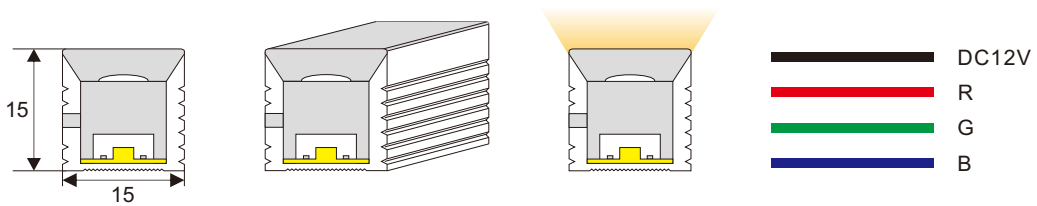
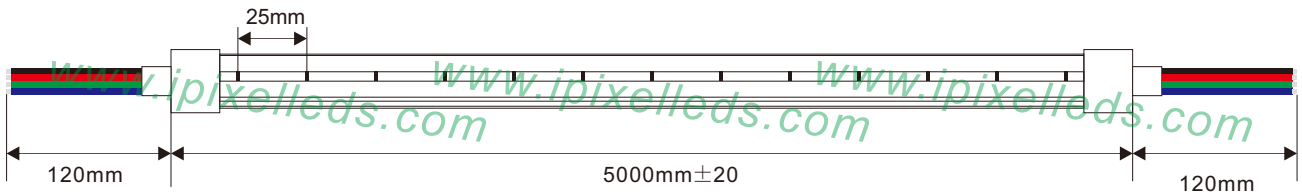


profile  
1000x15x10mm(LxWxH)

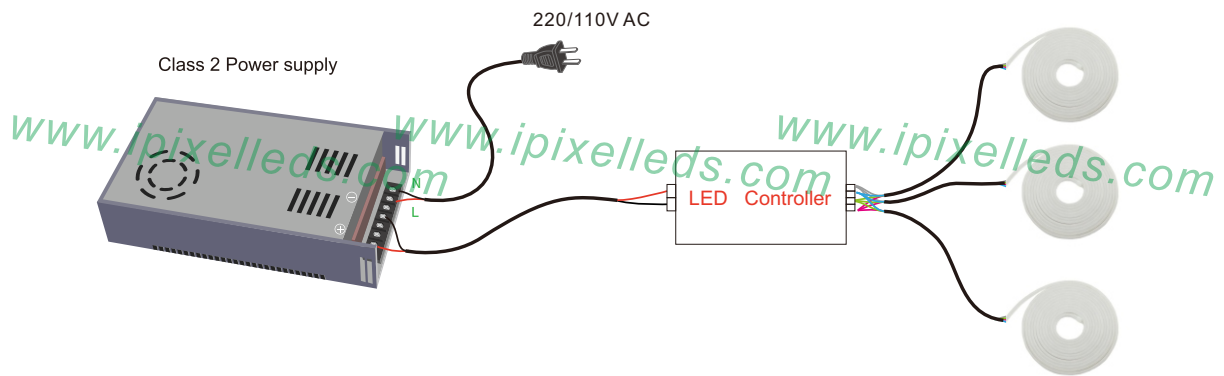




## Outline Dimension (unit:mm)



## Connection



## X-ON Electronics

Largest Supplier of Electrical and Electronic Components

*Click to view similar products for [LED Lighting Bars and Strips](#) category:*

*Click to view products by [IPIXEL LED](#) manufacturer:*

Other Similar products are found below :

[ZLF0310W62524](#) [LF1D-F2F-2W-300](#) [00215258](#) [HH-SWW320F010W12-COB IP20](#) [HH-SWW320F010W24-COB IP20](#) [HH-SWW528F210W12-COB IP65](#) [HH-SG528F010W24-COB IP20](#) [LF2D-EN2F-2W-A](#) [LFBHL-SW827-24V-8S63-20](#) [N006120BC1LZ \(GOLDEN YELLOW\)](#) [S010060CB1LZ \(NEUTRAL WHITE IP65\)](#) [S010060CC1LZ \(WARM WHITE IP65\)](#) [2633830000](#) [HH-SX72F008W24-2835 CW WHITE PCB IP20](#) [HH-SX180F010W24 -2835 WW WHITE PCB IP20](#) [HH-SX72F008W24-2835 NW WHITE PCB IP20](#) [HH-SX144F008W24 -2835 NW WHITE PCB IP20](#) [HH-SX180F010W24 -2835 NW WHITE PCB IP20](#) [HH-SX144F008W24 -2835 CW WHITE PCB IP20](#) [HH-SX144F008W24 -2835 WW WHITE PCB IP20](#) [HH-SX180F010W24 -2835 CW WHITE PCB IP20](#) [N008120BB1LZ \(BLUE\)](#) [00219015](#) [10001611](#) [10001612](#) [10001613](#) [10001617](#) [10001618](#) [10001619](#) [10001622](#) [10001623](#) [10001655](#) [10001657](#) [10001664](#) [10001670](#) [10001675](#) [10001681](#) [10001683](#) [10001690](#) [PUUA-100LLL-NK2P](#) [QAUR1161L030](#) [HC-F12V-3535 PCBA](#) [HC-F12V-F50-3L-WS2811](#) [HC-F12V-WS2811-3535](#) [HC-F5V-144L-144LED-B-WS2813 IP20](#) [HC-F5V-144L-144LED-B-WS2813 IP65](#) [HC-F5V-144L-144LED-W-WS2813 IP20](#) [HC-F5V-30L-30LED-B-WS2813 IP20](#) [HC-F5V-30L-30LED-W-WS2813 IP20](#) [HC-F5V-60L-60LED-B-WS2813 IP20](#)