

## 5mm TM1903 2835 RGB LED Strip 120LEDs/m 24V



### ◆ Product Description:

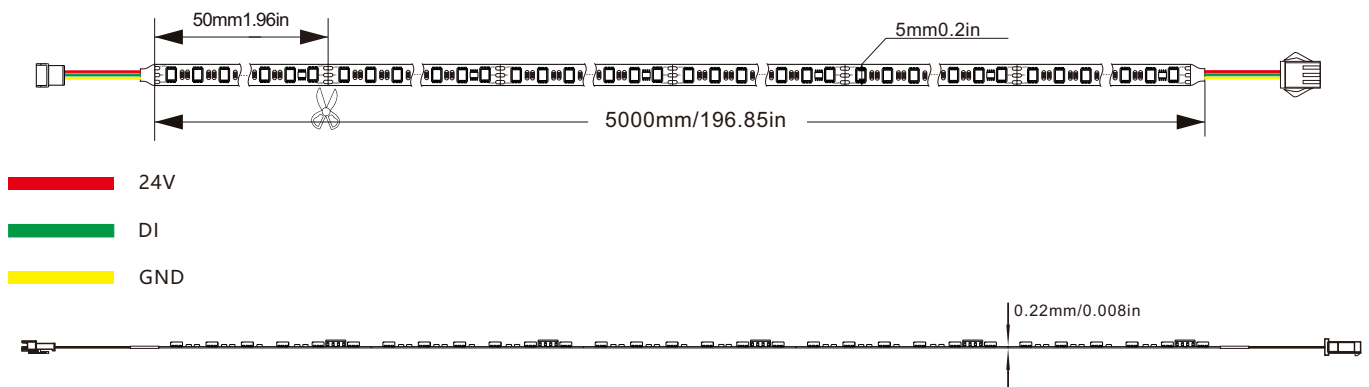
This flex led strip uses SMD2835 RGB LED chip,  
120leds/m, single row led chip  
20Pixels per meter, SPI control  
DC24V constant voltage operation  
Flex PCB with white color or black color  
1+2 ounce copper FPC, 5mm width  
5 m per reel, length can be customized



### ◆ Product Datasheet

Product Number	S005120BC3SC	Luminance/M	R:157 G:415 B:94lm
Operating Voltage	DC24V	Ra	/
Power/M	24W	Beam Angle	120°
SMD Type	2835	Size (mm)	5000 *5mm
LED Qty/M	120	IP Rate	IP20/IP65
Color	R G B	Operation Temperature	- 25 ~ 60 °C
Pixel/M	20	Material	FPC
Control	SPI-TM1903	Cutting Length	50mm
Wavelength	R:620-625 G:520-525 B:460-465nm	Net Weight/Roll	0.075kg

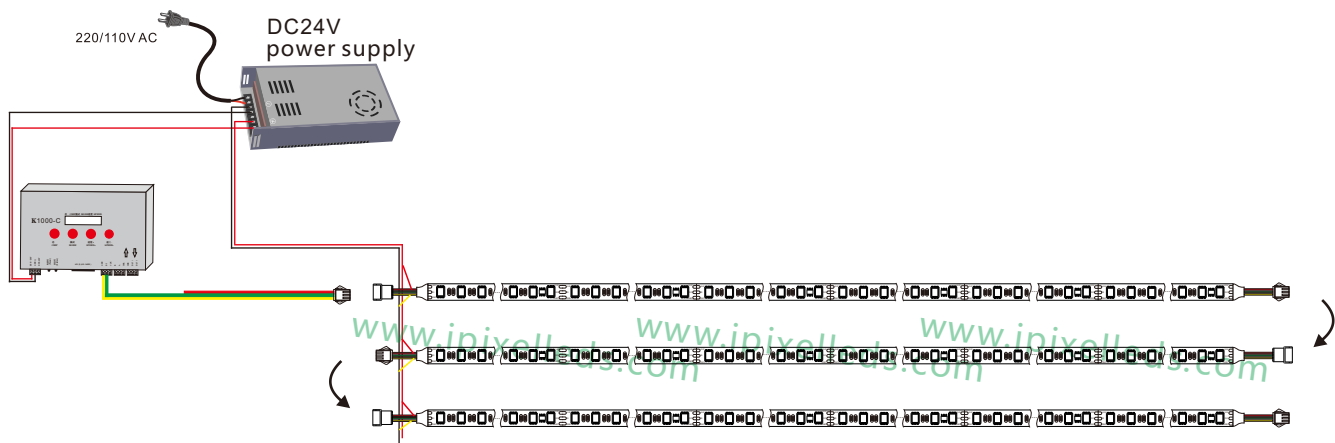
### ◆ Outline Dimension (unit: mm)



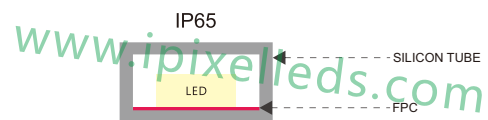
## ◆ Order number

DC24V	RGB	White PCB	IP20	S005120BC3SC/C1
DC24V	RGB	White PCB	IP65	S005120BC3SC/C2
DC24V	RGB	Black PCB	IP20	S005120BC3SC/C3
DC24V	RGB	Black PCB	IP65	S005120BC3SC/C4

## ◆ Wiring diagram



## ◆ Strip IP Rate



## ◆ Accessories



Screw

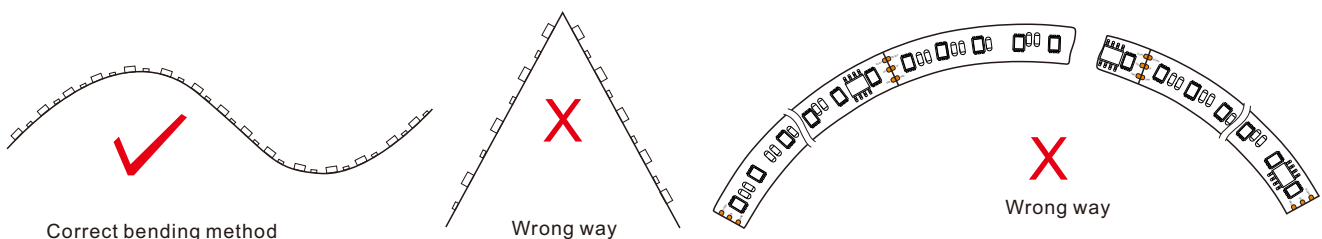


Silicone clip



End cap

## ◆ Schematic diagram of maximum bending prevention



Note: The parameters are subject to change without notice!

## X-ON Electronics

Largest Supplier of Electrical and Electronic Components

*Click to view similar products for [LED Lighting Bars and Strips category](#):*

*Click to view products by [IPIXEL LED manufacturer](#):*

Other Similar products are found below :

[LFBLL-SW823-24V-8S125-20](#) [LFBHL-SW927-24V-8S63-20](#) [RF-G30HI3510-241202081-A0 IP20](#) [RF-GW2H39W19-2406020I1-A1 IP20](#)  
[HH-SX144F008W24 -2835 WW WHITE PCB IP20](#) [N004120BB1LZ \(6000K\)](#) [N004120BC1LZ \(3000K\)](#) [N008120BB1LZ \(BLUE\)](#)  
[N008120BC1LZ \(4000K\)](#) [S008144CA4SA1/C1 \(RGB+4000K IP20\)](#) [S0121134ZC3PZ](#) [COB-480-CW-24-10W](#) [HQS-14.4W-60LED-RGB-](#)  
[WP-12V-5M](#) [N013060CA3SA1](#) [HQS-12W-60LED-W-WP-24V-5M](#) [UQS-COB-12W-NW-24V-5M](#) [HH-SNW480F208W24-COB-R](#) [HQS-](#)  
[12W-60LED-NW-WP-12V-5M](#) [S012120BC1HZ \(WARM WHITE\)](#) [HQS-6W-60LED-WW-WP-24V-5M](#) [COB-480-NW-24-10W](#)  
[S020240BC1DC0/C3](#) [S012060CB4SA1/C2](#) [HQS-12W-60LED-WW-WP-24V-5M](#) [HH-SW480F008W24-COB-R](#) [HH-SWW320F008W24-](#)  
[COB-R](#) [COB-480-WW-24-10W](#) [HQS-6W-60LED-NW-WP-12V-5M](#) [S012060CC4DC0/C3](#) [HH-SWW320F208W12-COB-R](#) [S012048CB4PZ](#)  
[\(RGB+W:3000K\)](#) [HQS-9.6W-120LED-NW-WP-12V-5M](#) [S012480ZB1SF \(WARM WHITE IP20\)](#) [HQS-6W-60LED-WW-12V-5M](#)  
[S012120BC1HZ \(COLD WHITE\)](#) [HQS-6W-60LED-W-WP-12V-5M](#) [HQS-6W-60LED-W-12V-5M](#) [HQS-9.6W-120LED-NW-24V-5M](#) [HQS-](#)  
[9.6W-120LED-NW-12V-5M](#) [HQS-12W-60LED-WW-12V-5M](#) [S012480ZB1SF \(COLD WHITE IP20\)](#) [HH-SRGB60F310W12-5050 WHITE](#)  
[PCB IP65A](#) [S010120BC3SM/C1](#) [UQS-COB-12W-W-24V-5M](#) [HQS-6W-60LED-NW-12V-5M](#) [HH-SW60F008W12-3528 CW WHITE PCB](#)  
[IP20](#) [HQS-6W-60LED-NW-24V-5M](#) [S004060BB3PZ/C2](#) [TAMA LED K2-30-1920-24V 19,2W/M](#) [TAMA LED K-30-2400-24V 24W/M](#)