



## SMD 5050 RGB Flexible LED Tape-60leds



### Product Description

This flexible LED strip soldered 60pcs SMD 5050 LED chip.

Flexible PCB: White , PCB Width 10mm.

Cutable each set of 3 LEDs or 6 LEDs.

Waterproof version -Silicon Tube coating: W14\*H4mm.



Both 12V /24V available, constant voltage operation.

Voltage drop from start to end of 5 M  $\pm$  2V.

Each end soldered a 4 Pin bare wire 20AWG at 12cm length.

Standard size 5M in a reel, customizable of length.



## Product Datasheet

Product Number	S010060CB3PZ	S010060CC3PZ
Light Source	SMD 5050	
Beam Angle	120°	
LED Quantity	60 leds/m	
Protocol	RGB Controller	
MCD Per LED	R500/G1400/B400	
Color Rendition Index	85RA	
Operating Voltage	DC12V	DC24V
Power (W)	12 W/M	14 W/M
Size (mm)	L 5000* W 10	
IP	IP 20/IP 65	
Net Weight	0.24kg/roll	
Operation Temperature	- 40 ~ 50 °C	

## Application



Hotels, restaurants, nights clubs.

Advertising signs, brightening.



Back lighting, edge lighting.

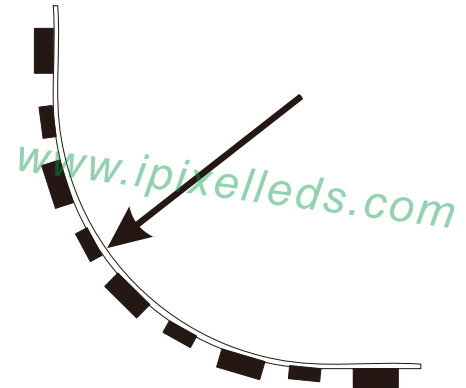
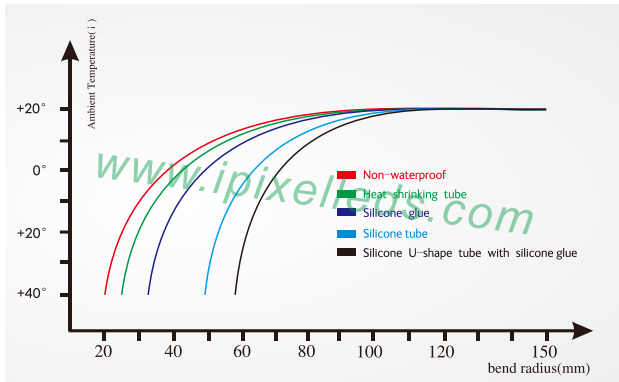
Dancefloor background.

## Strip IP Rate

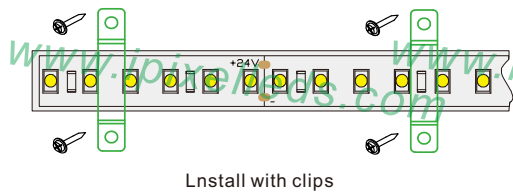




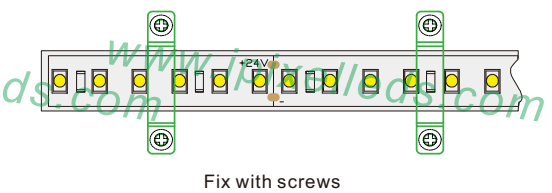
## Curve Lune



## Installation



Install with clips



Fix with screws

## Accessories (Excluded)



Screws



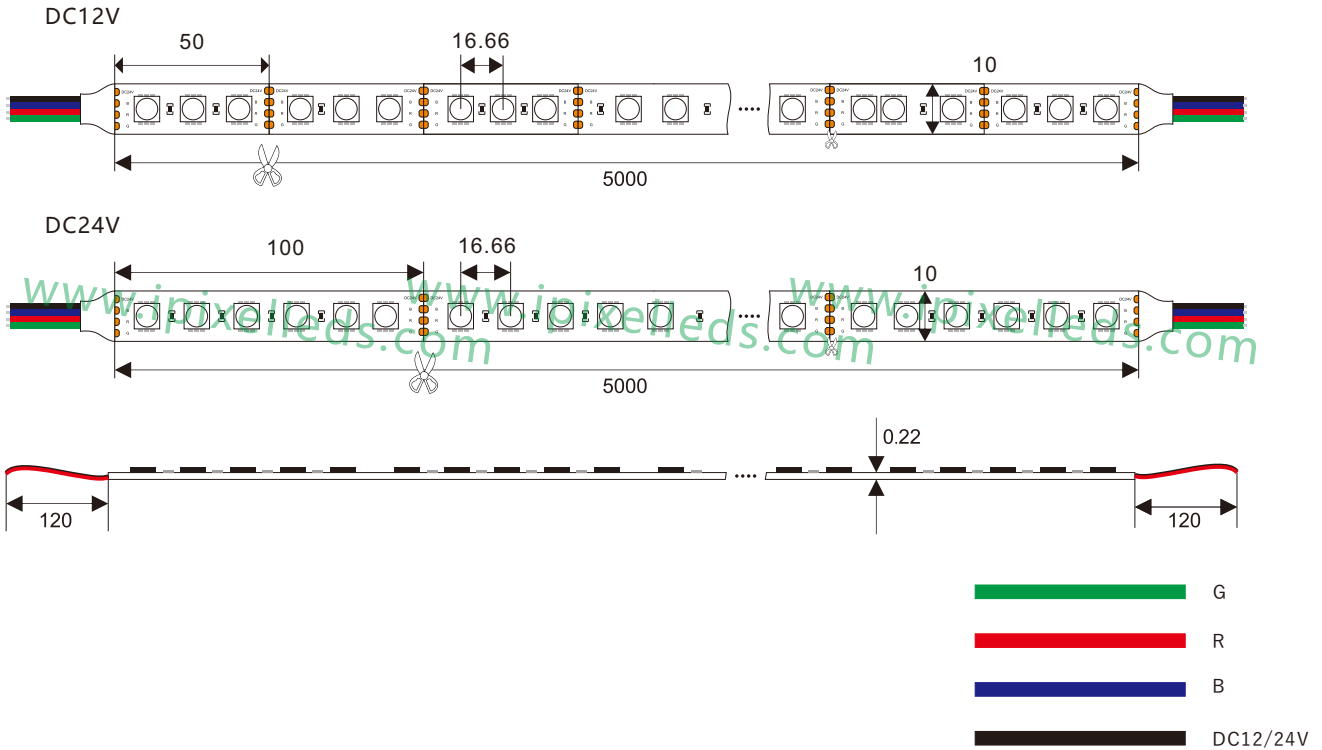
Silicone clip



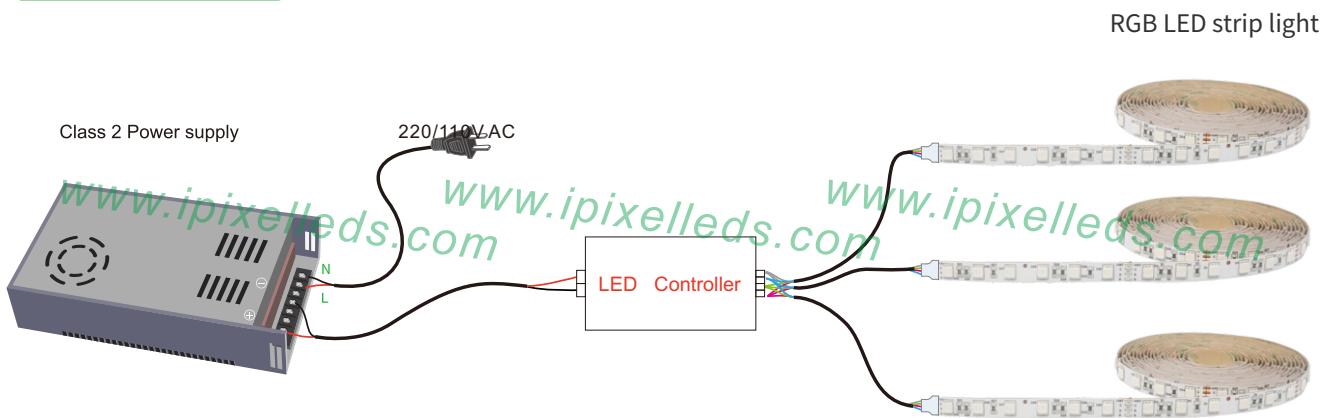
End cap



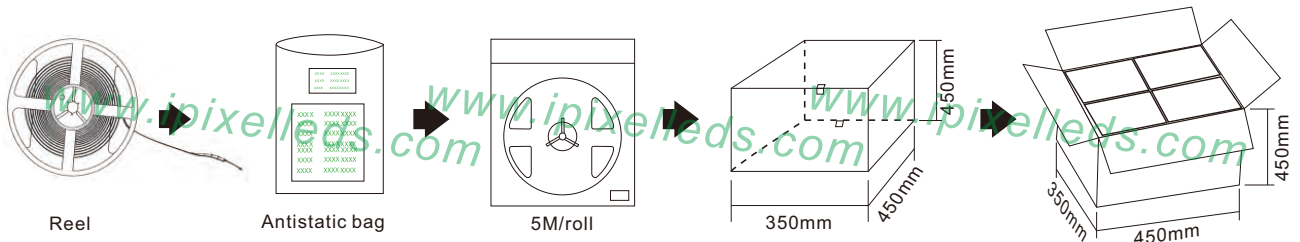
## Outline Dimension (unit:mm)



## Connection



## Product packaging



## X-ON Electronics

Largest Supplier of Electrical and Electronic Components

*Click to view similar products for [LED Lighting Bars and Strips](#) category:*

*Click to view products by [IPIXEL LED](#) manufacturer:*

Other Similar products are found below :

[ZLF0310W62524](#) [LF1D-F2F-2W-300](#) [00215258](#) [HH-SWW320F010W12-COB IP20](#) [HH-SWW320F010W24-COB IP20](#) [HH-SWW528F210W12-COB IP65](#) [HH-SG528F010W24-COB IP20](#) [LF2D-EN2F-2W-A](#) [LFBHL-SW827-24V-8S63-20](#) [N006120BC1LZ \(GOLDEN YELLOW\)](#) [S010060CB1LZ \(NEUTRAL WHITE IP65\)](#) [S010060CC1LZ \(WARM WHITE IP65\)](#) [2633830000](#) [HH-SX72F008W24-2835 CW WHITE PCB IP20](#) [HH-SX180F010W24 -2835 WW WHITE PCB IP20](#) [HH-SX72F008W24-2835 NW WHITE PCB IP20](#) [HH-SX144F008W24 -2835 NW WHITE PCB IP20](#) [HH-SX180F010W24 -2835 NW WHITE PCB IP20](#) [HH-SX144F008W24 -2835 CW WHITE PCB IP20](#) [HH-SX144F008W24 -2835 WW WHITE PCB IP20](#) [HH-SX180F010W24 -2835 CW WHITE PCB IP20](#) [N008120BB1LZ \(BLUE\)](#) [00219015](#) [10001611](#) [10001612](#) [10001613](#) [10001617](#) [10001618](#) [10001619](#) [10001622](#) [10001623](#) [10001655](#) [10001657](#) [10001664](#) [10001670](#) [10001675](#) [10001681](#) [10001683](#) [10001690](#) [PUUA-100LLL-NK2P](#) [QAUR1161L030](#) [HC-F12V-3535 PCBA](#) [HC-F12V-F50-3L-WS2811](#) [HC-F12V-WS2811-3535](#) [HC-F5V-144L-144LED-B-WS2813 IP20](#) [HC-F5V-144L-144LED-B-WS2813 IP65](#) [HC-F5V-144L-144LED-W-WS2813 IP20](#) [HC-F5V-30L-30LED-B-WS2813 IP20](#) [HC-F5V-30L-30LED-W-WS2813 IP20](#) [HC-F5V-60L-60LED-B-WS2813 IP20](#)