



## OPTICALLY COUPLED BILATERAL SWITCH NON-ZERO CROSSING TRIAC



### APPROVALS

- UL recognised, File No. E91231 under Package System 'KK'

### 'X' SPECIFICATION APPROVALS

- VDE 0884 in 3 available lead forms : -  
- STD  
- G form  
- SMD approved to CECC 00802

### DESCRIPTION

The MOC302\_ series are optically coupled isolators consisting of a Gallium Arsenide infrared emitting diode coupled with a light activated silicon bilateral switch performing the functions of a triac mounted in a standard 6 pin dual-in-line package.

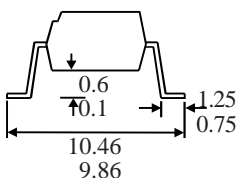
### FEATURE

- Options :-  
10mm lead spread - add G after part no.  
Surface mount - add SM after part no.  
Tape&reel - add SMT&R after part no.
- High Isolation Voltage ( $5.3kV_{RMS}$ ,  $7.5kV_{PK}$ )
- 400V Peak Blocking Voltage
- All electrical parameters 100% tested
- Custom electrical selections available

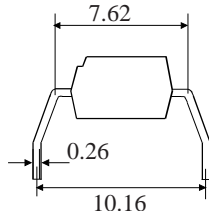
### APPLICATIONS

- CRTs
- Power Triac Driver
- Motors
- Consumer appliances
- Printers

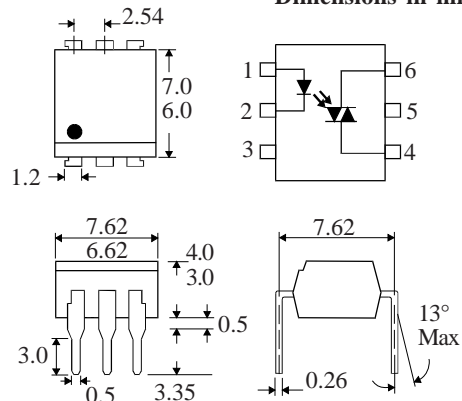
#### OPTION SM SURFACE MOUNT



#### OPTION G



#### Dimensions in mm



### ABSOLUTE MAXIMUM RATINGS (25 °C unless otherwise noted)

Storage Temperature \_\_\_\_\_ -55°C - +150°C  
Operating Temperature \_\_\_\_\_ -40°C - +100°C  
Lead Soldering Temperature \_\_\_\_\_ 260°C  
(1.6mm from case for 10 seconds)

### INPUT DIODE

Forward Current \_\_\_\_\_ 50mA  
Reverse Voltage \_\_\_\_\_ 6V  
Power Dissipation \_\_\_\_\_ 70mW  
(derate linearly 0.93mW/°C above 25°C)

### OUTPUT PHOTO TRIAC

Off-State Output Terminal Voltage \_\_\_\_\_ 400V  
Forward Current (Peak) \_\_\_\_\_ 1A  
Power Dissipation \_\_\_\_\_ 300mW  
(derate linearly 4.0mW/°C above 25°C)

### POWER DISSIPATION

Total Power Dissipation \_\_\_\_\_ 330mW  
(derate linearly 4.4mW/°C above 25°C)

### ISOCOM COMPONENTS 2004 LTD

Unit 25B, Park View Road West,  
Park View Industrial Estate, Brenda Road  
Hartlepool, Cleveland, TS25 1UD  
Tel: (01429) 863609 Fax: (01429) 863581

**ELECTRICAL CHARACTERISTICS (  $T_A = 25^\circ\text{C}$  Unless otherwise noted )**

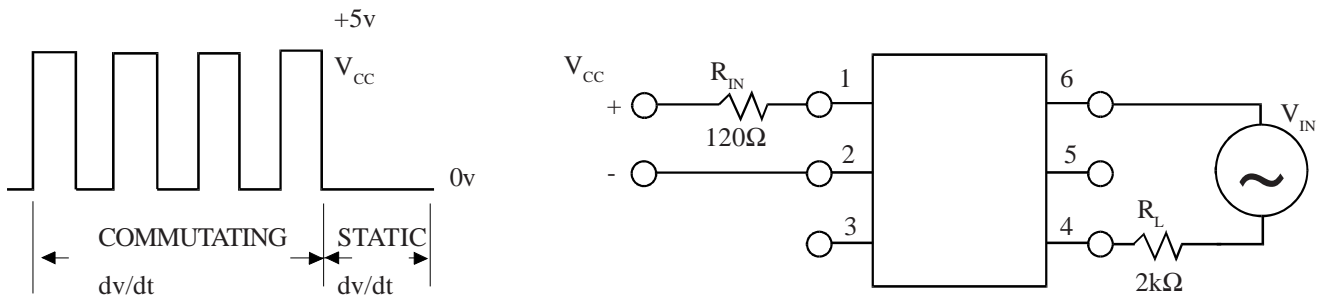
PARAMETER		MIN	TYP	MAX	UNITS	TEST CONDITION
Input	Forward Voltage ( $V_F$ ) Reverse Current ( $I_R$ )		1.2	1.5 100	V $\mu\text{A}$	$I_F = 10\text{mA}$ $V_R = 6\text{V}$
Output	Peak Off-state Current ( $I_{\text{DRM}}$ ) Peak Blocking Voltage ( $V_{\text{DRM}}$ ) On-state Voltage ( $V_{\text{TM}}$ ) Critical rate of rise of off-state Voltage ( $dv/dt$ ) ( note 1 ) Critical rate of rise of commutating Voltage ( $dv/dt$ ) ( note 1 )	400	1.5 10	100 3.0	nA V V $\text{V}/\mu\text{s}$ $\text{V}/\mu\text{s}$	$V_{\text{DRM}} = 400\text{V}$ (note 1 ) $I_{\text{DRM}} = 100\text{nA}$ $I_{\text{TM}} = 100\text{mA}$ ( peak )  $I_{\text{load}} = 15\text{mA}$ , $V_{\text{IN}} = 30\text{V}$ ( fig 1. )
Coupled	Input Current to Trigger ( $I_{\text{FT}}$ )(note 2 ) MOC3020 MOC3021 MOC3022 MOC3023  Holding Current , either direction ( $I_H$ )  Input to Output Isolation Voltage $V_{\text{ISO}}$			30 15 10 5	mA mA mA mA  $\mu\text{A}$  $V_{\text{RMS}}$ $V_{\text{PK}}$	$V_D = 3\text{V}$ ( note 2 )      See note 3 See note 3

Note 1. Test voltage must be applied within  $dv/dt$  rating.

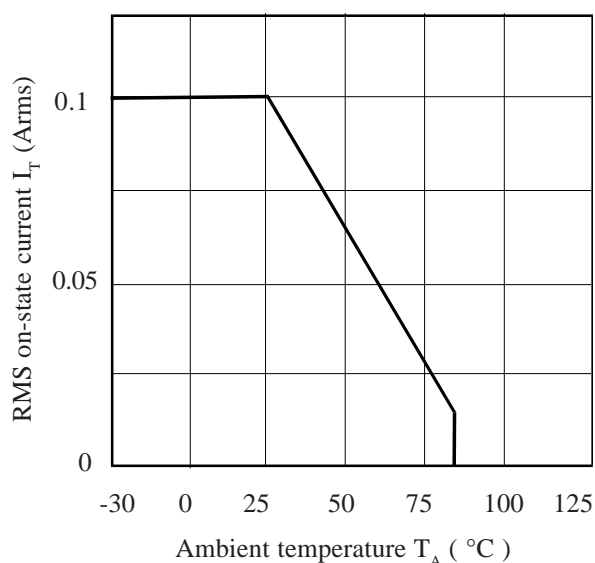
Note 2. Guaranteed to trigger at an  $I_F$  value less than or equal to max.  $I_{\text{FT}}$ , recommended  $I_F$  lies between Rated  $I_{\text{FT}}$  and absolute max.  $I_{\text{FT}}$ .

Note 3. Measured with input leads shorted together and output leads shorted together.

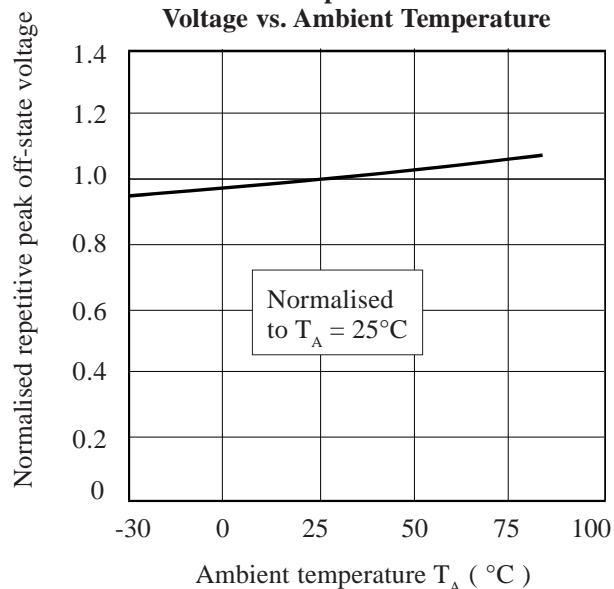
**FIGURE 1**



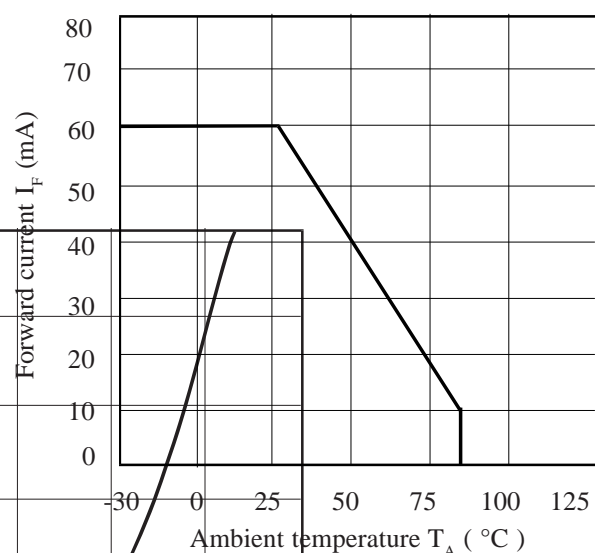
**RMS On-state Current vs. Ambient Temperature**



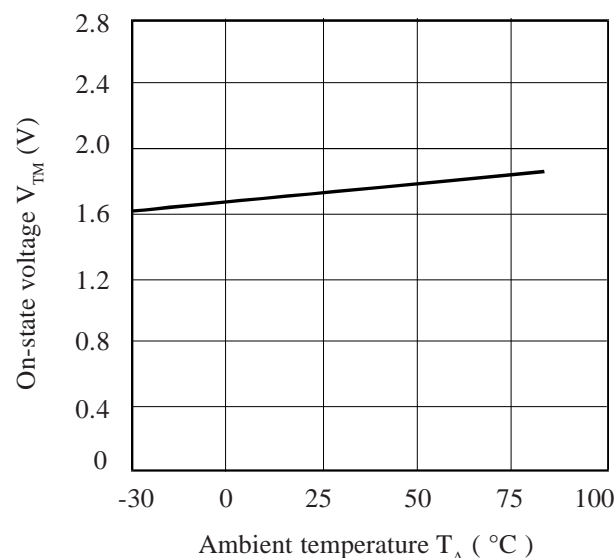
**Normalised Repetitive Peak Off-state Voltage vs. Ambient Temperature**



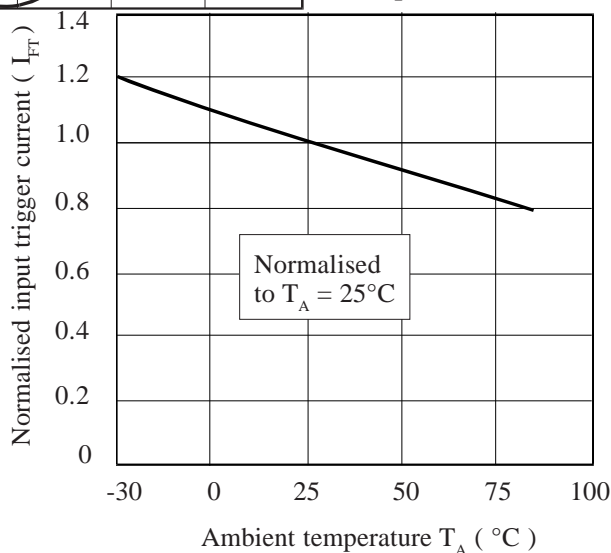
**Forward Current vs. Ambient Temperature**



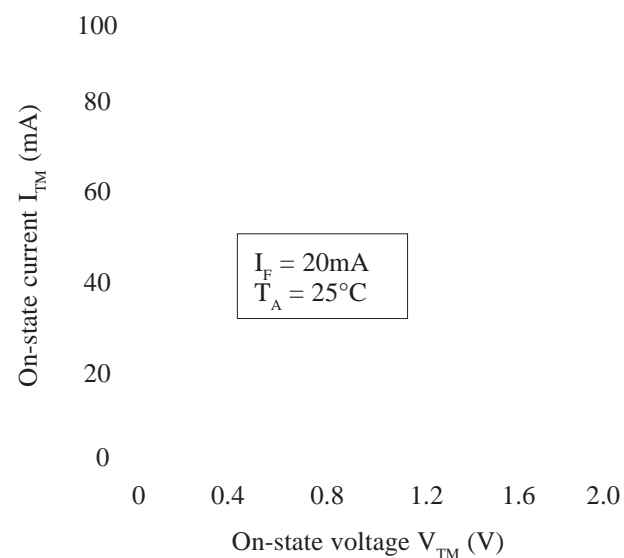
**On-state Voltage vs. Ambient Temperature**



**Normalised Input Trigger Current vs. Ambient Temperature**



**On-state Current vs. On-state Voltage**



## X-ON Electronics

Largest Supplier of Electrical and Electronic Components

*Click to view similar products for [High Speed Optocouplers](#) category:*

*Click to view products by [Isocom](#) manufacturer:*

Other Similar products are found below :

[6N136F](#) [PS8502L2-AX](#) [ACNW261L-000E](#) [ACPL-344JT-000E](#) [ACPL-K49T-500E](#) [ACPL-K74T-000E](#) [ACPL-K75T-000E](#) [ACPL-W21L-560E](#) [ACPL-K44T-500E](#) [TLP187\(TPL,E\(T](#) [TLP2601\(TP1,F\)](#) [610737H](#) [6N137A-X001](#) [6N137A-X017T](#) [6N139-X007T](#) [HCPL2630M](#) [HCPL2731SM](#) [TLP555\(F\)](#) [HCPL2630SM](#) [PS2841-4A-F3-AX](#) [PS9817A-1-F3-AX](#) [PS9821-2-F3-AX](#) [ORPC-817D](#) [ORPC-817M/C](#) [ORPC-817M/B](#) [PT17-51C/L129\(BIN2\)](#) [TLP521-4GBSM](#) [UMW817C](#) [6N137S1\(TA\)](#) [TLP521GB](#) [TLP521GB-S](#) [PS2501](#) [PS2501-S](#) [TLP785GB](#) [TLP785GB-S](#) [LTV-214-G](#) [TLP2766A\(E](#) [TLP2766A\(LF4,E](#) [LCR-0202](#) [EL814S1\(TA\)-V](#) [PC817X4NSZ2B](#) [CYPC817](#) [OR-MOC3023](#) [TLP267J\(TPL,E\(T](#) [TLP109\(TPL,E\(O](#) [EL2514S1\(TU\)\(CLW\)-G](#) [EL816S2\(C\)\(TU\)-F](#) [TLP281-4](#) [MOC3023M](#) [ACPL-K49T-060E](#)