

# IS31SE5100 8-CH CAPACITIVE TOUCH SENSOR

## DESCRIPTION

The IS31SE5100 is an ultra low power, fully integrated solution for capacitive touch applications with up to 8 surfaces. The chip allows electrodes to project sense fields through any dielectric such as glass or plastic. On-chip calibration logic continuously monitors the environment and automatically adjusts on-and-off threshold levels to prevent false sensor activation.

The IS31SE5100 is fully programmable via a 400kHz I2C serial bus protocol.

## FEATURES

- Supply voltage from 2.7V to 5.5V
- I2C interface, 1.8V/2.8V is allowed
- Auto offset compensation
- Fully integrated sense controller with eight capacitive touch inputs
- Interrupt driven output
- Adjustable sensitivity with external capacitor or by internal register
- Low power consumption
- ESD HBM 8kV
- IC controller in QFN-24 (4mm × 4mm)

## QUICK START

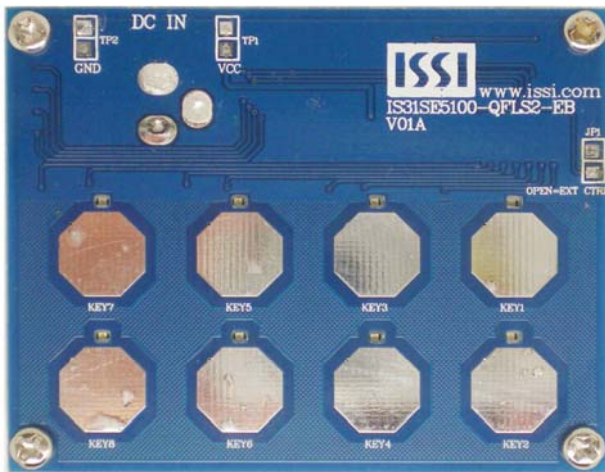


Figure 1: Photo of IS31SE5100 Evaluation Board

## RECOMMENDED EQUIPMENT

- 5.0V, 500mA power supply

## ABSOLUTE MAXIMUM RATINGS

- ≤ 5.5V power supply

**Caution: Do not exceed the conditions listed above, otherwise the board will be damaged.**

## PROCEDURE

The IS31SE5100 evaluation board is fully assembled and tested. Follow the steps listed below to verify board operation.

**Caution: Do not turn on the power supply until all connections are completed.**

- 1) Connect the ground lead of the power supply to the EVB GND terminal and the positive lead to the EVB VCC terminal. Or use the connector (DC IN) with a power adaptor: jack size 3.5mm x 1.35mm.
- 2) Turn on the power supply and pay attention to the supply current. If the current exceeds 100mA, please check for a circuit fault.

## EVALUATION BOARD OPERATION

This evaluation board is controlled by a pre-programmed P89LPC922 (80C51 core).

IS31SE5100 evaluation board has 8 touch surfaces designed on a 2mm thick acrylic board to induce a dielectric. Each touch surface has an associated LED that will light when the corresponding surface area is touched.

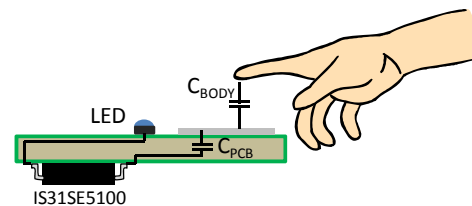


Figure 2: Capacitance Detection

The capacitance ( $C_{\text{BODY}}$ ) of an approaching finger increases as it approaches the sense area. The IS31SE5100 detects this increase in capacitance and turns on the associated LED.

## SOFTWARE SUPPORT

Please refer to the integrated program.

*Please refer to the datasheet for more information.*



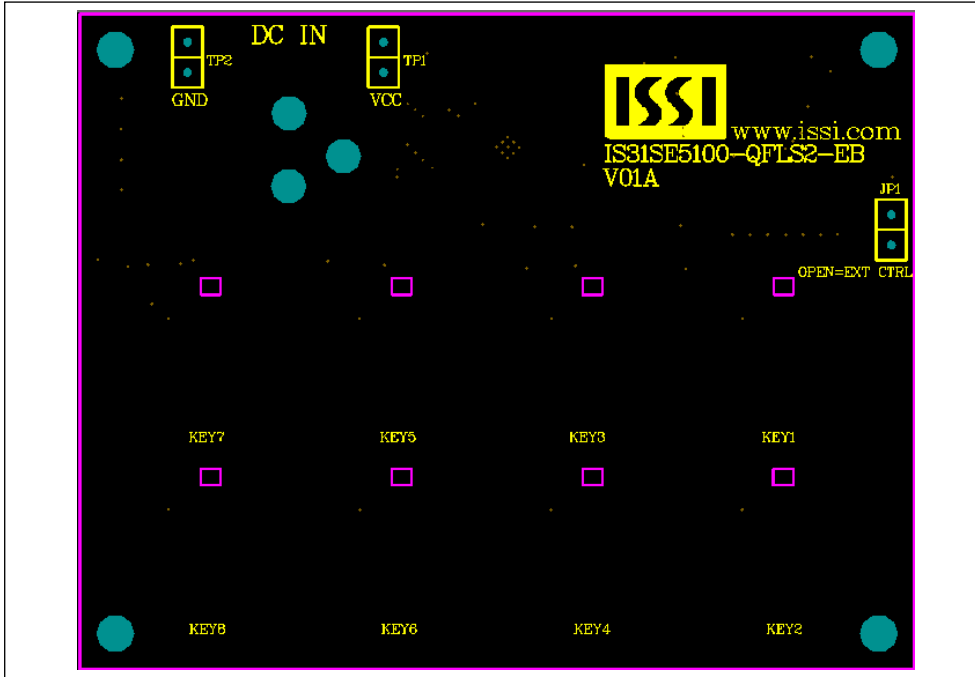
## IS31SE5100 8-CH CAPACITIVE TOUCH SENSOR

### Bill of Materials

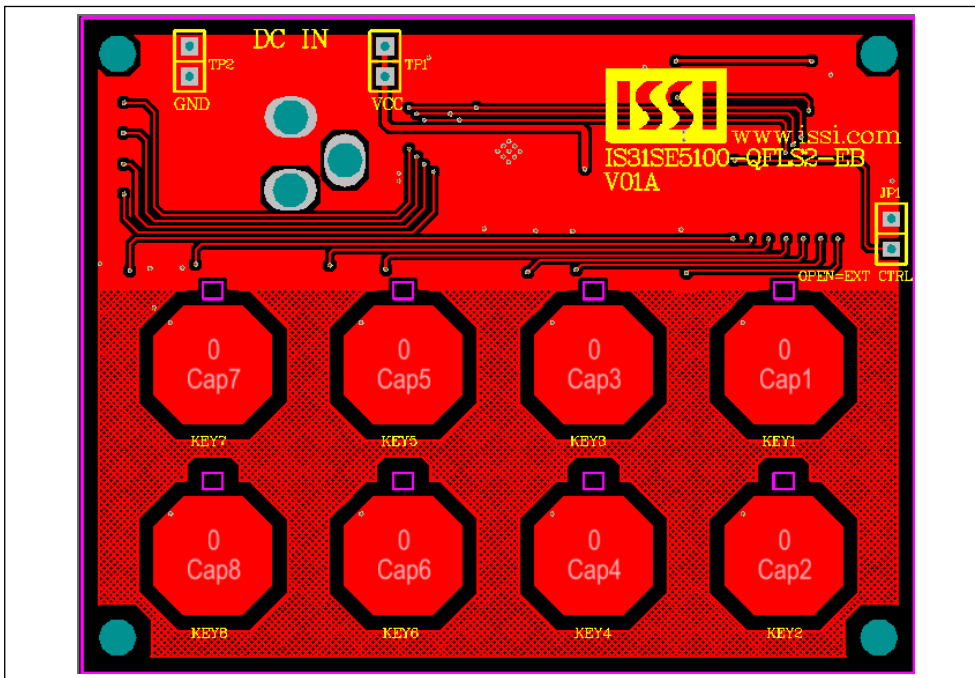
Name	Symbol	Description	Qty.	Supplier	Part No.
Touch Sensor	U1	Capacitive touch sensor	1	Lumissil	IS31SE5100
MCU	U2	Microcontroller	1	NXP	LPC922
LDO	U3	Low-dropout regulator	1	PAM	PAM3101
Diodes	D1~D8	Diode,LED blue,SMD	8	Everlight	19-217/BHC-ZL1M2 RY/3T
Resistors	R1,R4	RES,10k,1/16W,±5%,SMD	2		
Resistors	R2~R3	RES,4.7k,1/16W,±5%,SMD	2		
Resistors	R5~R12	RES,510,1/16W,±5%,SMD	8		
Resistors	R13~R20	RES,1k,1/16W,±5%,SMD	8		
Capacitors	C1,C5	CAP,10µF,16V,±20%,SMD	2		
Capacitors	C2,C3,C6	CAP, 0.1µF,16V,±20%,SMD	3		
Capacitor	C4	CAP,10nF,16V,±20%,SMD	1		

*Bill of Materials, refer to Figure 3 above.*

**IS31SE5100 8-CH CAPACITIVE TOUCH SENSOR**



*Figure 4: Board Component Placement Guide -Top Layer*



*Figure 5: Board PCB Layout- Top Layer*



## X-ON Electronics

Largest Supplier of Electrical and Electronic Components

*Click to view similar products for [Touch Sensor Development Tools](#) category:*

*Click to view products by [ISSI](#) manufacturer:*

Other Similar products are found below :

[ATMXT1066T2-DEV-PCB](#) [ATMXT336UDEVPCB](#) [ATMXT641TDAT-I2C-PCB](#) [1374](#) [MIKROE-1906](#) [1602](#) [SEN0164](#) [1982](#) [STEVAL-PCC009V3](#) [ATSAMD20-QTRDEMO](#) [ATQT2-XPRO](#) [ATQT6-XPRO](#) [2340](#) [DM160221](#) [DM160229](#) [DM160222](#) [ATQT5-XPRO](#) [DFR0129](#) [SEN0170](#) [SLEXP8019A](#) [SLEXP8018A](#) [1375](#) [DFR0386](#) [SEN0186](#) [SEN0148](#) [DK-000013-03](#) [ROB0103](#) [cs-useful-01](#) [DFR0385](#) [SEN0184](#) [SX8651EVKA](#) [1362](#) [1580](#) [2024](#) [3575](#) [4830](#) [AS8579-TS\\_EK\\_DB](#) [ATQT600](#) [IQS227/228ASEV01](#) [SKU-6515](#) [CY3280-MBR2](#) [CY3280-MBR3](#) [DFR0030](#) [DM160219](#) [AC160219](#) [AC320007](#) [ATEVK-MXT1066T2-A](#) [ATEVK-MXT1189TAT-C](#) [ATEVK-MXT1189TDAT-A](#) [ATEVK-MXT1665TAT-C](#)