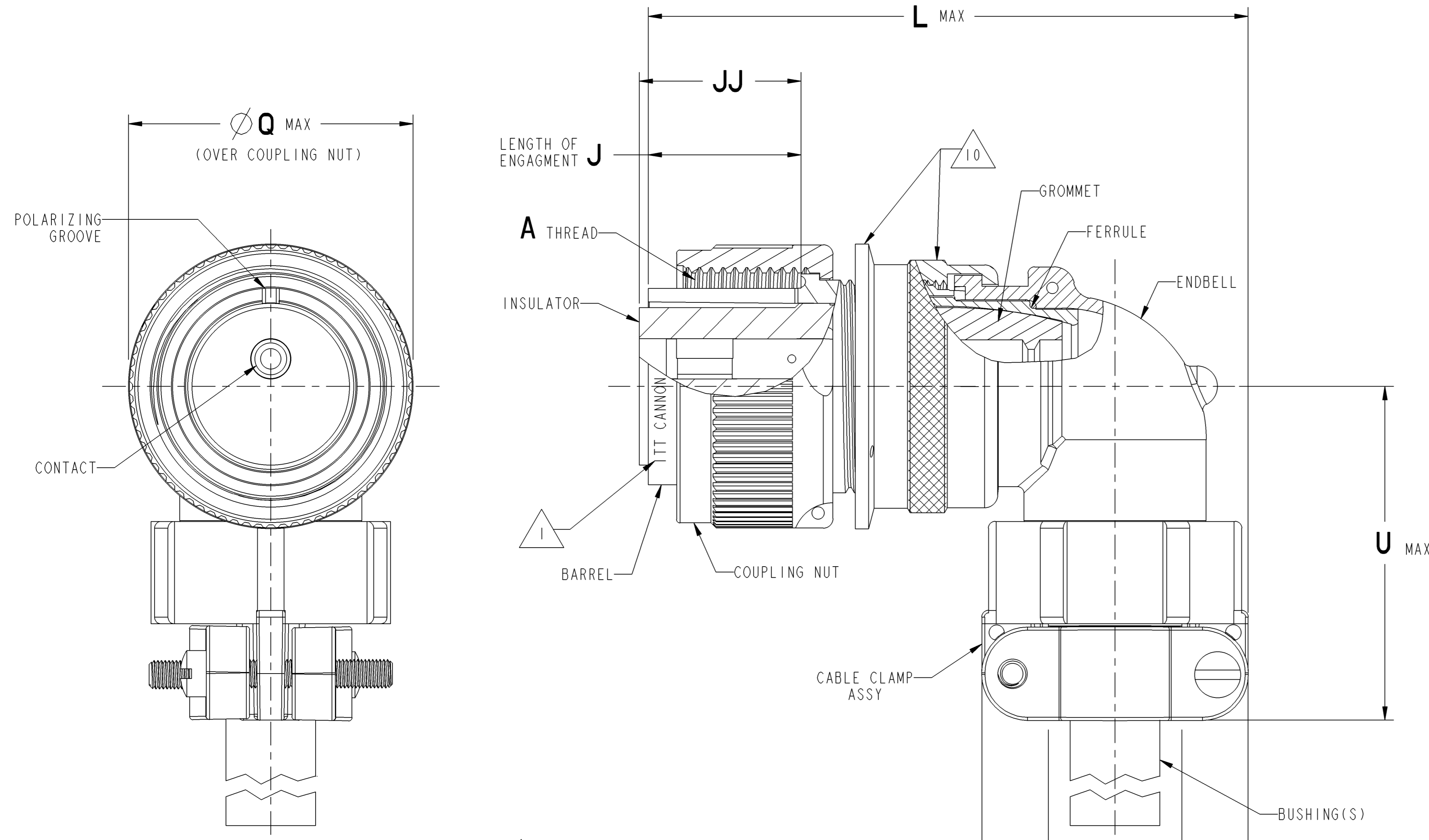


THIS IS ISSUED IN STRICT CONFIDENCE ON CONDITION THAT IT IS NOT USED AS A BASIS FOR MANUFACTURE OR SALE, AND THAT IT IS NOT COPIED, REPRINTED OR DISCLOSED TO A THIRD PARTY EITHER WHOLLY OR IN PART WITHOUT THE PRIOR WRITTEN CONSENT OF ITT CANNON.

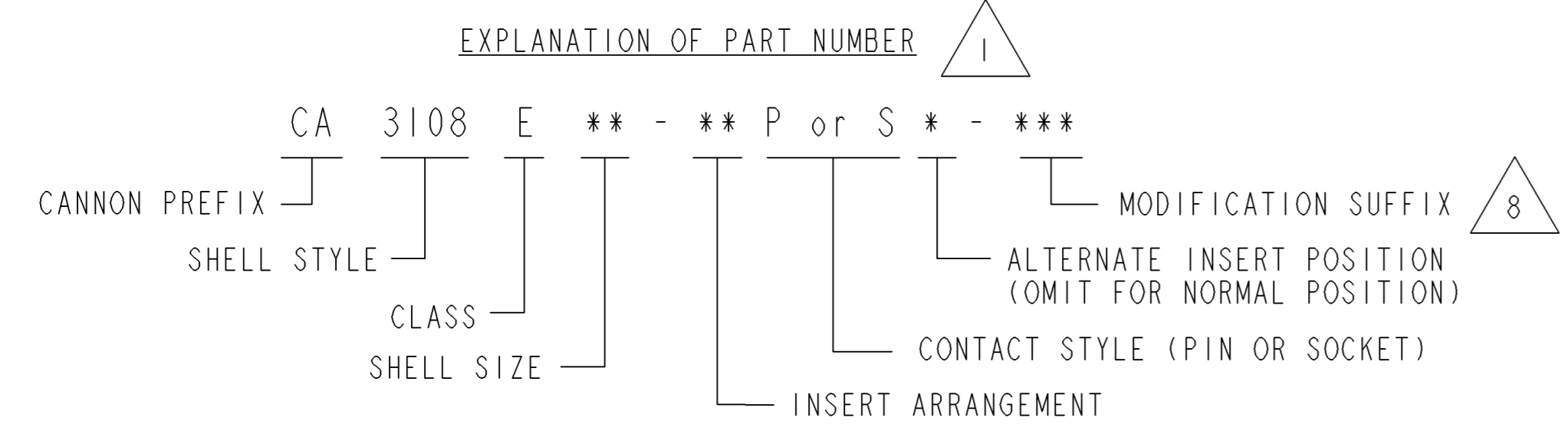
DWG NO. 010380Y0001

REV 1

| REVISIONS | | | |
|-----------|-------------|------|----------|
| REV | DESCRIPTION | DATE | APPROVAL |
| | | | |

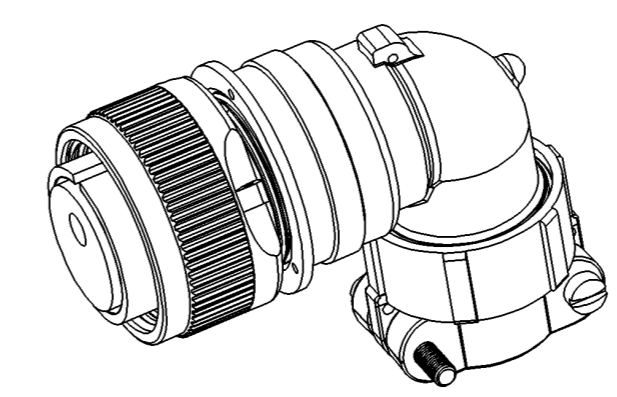


- NOTES: UNLESS OTHERWISE SPECIFIED
- MARK "ITT CANNON", IDENTIFICATION PART NUMBER AND DATE CODE, .047 MIN HIGH.
 - LUBRICATE INTERNAL COUPLING RING THREADS ONLY (NO EXTERNAL OR ENDBELL THREADS). ALSO LUBRICATE INTERNAL DIAMETER OF FERRULE LIGHTLY WITH MIL-G-23827 OR EQUIVALENT.
 - PLUGS SHIPPED AND STORED WITH ENDBELLS LOOSELY COUPLED.
 - FOR AVAILABLE INSERT ARRANGEMENTS, ALTERNATE POSITIONS, SERVICE RATINGS AND CONTACT SIZE, REFER TO MIL-STD-1651 OR CANNON CSA DWG'S OR CONSULT FACTORY.
 - THIS CONNECTOR MEETS THE REQUIREMENTS OF MIL-C-5015, CLASS E.
 - CONTACTS AND INSULATOR BONDED IN PLACE EXCEPT CONTACTS FOR CODE "F80" ARE NOT COATED WITH ADHESIVE AND ARE SUPPLIED WITH, BUT NOT INSTALLED IN CONNECTOR.
 - SOLDER POT MILL CUTS ORIENTED FACE UP WITH RELATION TO LETTERING ON REAR FACE OF INSULATOR.
 - EXPLANATION OF CODES-(TYP. EXAMPLES), CONSULT FACTORY FOR OTHER MODIFICATIONS.
 - A) A115 = HEAVY GOLD PLATE ON CONTACTS, .0001 MIN. THICKNESS OVER SILVER
 - B) C22 = RESILIENT PARTS OF SILICONE SYNTHETIC RUBBER
 - C) F0 = CONNECTOR WITHOUT CONTACTS
 - D) F74 = 1/16 GASKET UNDER COUPLING NUT
 - E) F80 = CRIMP CONTACTS
 - F) F84 = A115 CONTACTS WITH GASKET UNDER COUPLING NUT
 - G) F188 = CONNECTOR SUPPLIED WITH MS3420 BUSHING(S)
 - H) K130 = F80 + F188
 - THE ADDITION OF A CODE SUFFIX (A115, A95, ETC.) DENOTES A MATERIAL, PLATING OR A MECHANICAL VARIATION, PROHIBITS THE USE OF THE "MS" PREFIX. THEREFORE, WHEN A CODE IS USED, THE CONNECTOR WILL BE ASSIGNED A "CA" PART NUMBER.
 - THESE AREAS MAY DEVIATE SLIGHTLY FROM CONFIGURATION SHOWN DUE TO MANUFACTURING METHODS.
 - 1 BUSHING FOR SIZES 10SL, 12S, 16, AND 20, 2 BUSHINGS FOR SIZE 24.



| ITEM | NO. REQD. | DESCRIPTION | MATERIAL | FINISH |
|------|-----------|----------------------------|---|---|
| 9 | 1 | BUSHING(S) | POLYCHLOROPRENE PER QQ-R-3065 | NONE |
| 8 | 1 | GROMMET | | |
| 7 | 1 | INSULATOR | | |
| 6 | 1 | GLAND CLAMP ASSY. HARDWARE | ALUMINUM ALLOY PER QQ-A-225 OR QQ-A-591 | OLIVE DRAB CHROMATE OVER CADMIUM PER QQ-P-416, TYPE II, CLASS 3 |
| 5 | 1 | END BELL ASSY. | | |
| 4 | 1 | BARREL | NYLON PER MIL-N-18352 | NONE |
| 3 | 1 | NUT, COUPLING | | |
| 2 | 1 | FERRULE | COPPER ALLOY | SILVER PLATED PER QQ-S-365 (.0001 MIN.) |
| 1 | | CONTACT | | |

| AIRBUS INDUSTRIES PART NUMBER | ITT CANNON PART NUMBER | ITT CANNON DRAWING NUMBER | SIZE | A THREAD CLASS-2B | Q MAX | J | Z MAX | U MAX | L MAX | X MAX | JJ |
|-------------------------------|------------------------|---------------------------|------|-------------------|-------|------|-------|-------|-------|-------|--------------|
| NSA938925CHIS | CA3108E10SL-3S-K130 | 024283-0224 | 10SL | 5/8-24 UNEF | .969 | .531 | .895 | 1.281 | 2.188 | .310 | .578 .531 |
| NSA938925CGIS | CA3108E12S-3S-K130 | 024284-0222 | 12S | 3/4-20 UNEF | 1.062 | .531 | .895 | 1.281 | 2.188 | .310 | .578 .531 |
| NSA938925CFIS | CA3108E16-11S-K130 | 024289-0216 | 16 | 1-20 UNEF | 1.250 | .718 | 1.180 | 1.531 | 2.781 | .560 | .766 .719 |
| NSA938925CVS | CA3108E16-10S-K130 | 024289-0246 | | | | | | | | | .766 .719 |
| NSA938925CMIS | CA3108E20-4S-K130 | 024291-0278 | 20 | 1 1/4-18 UNEF | 1.469 | .718 | 1.475 | 1.656 | 3.250 | .748 | .766 .719 |
| NSA938925CMS | CA3108E24-10S-K130 | 024293-0236 | 24 | 1 1/2-18 UNEF | 1.719 | .718 | 1.715 | 1.890 | 3.719 | .935 | .766 .719 |



UNLESS OTHERWISE SPECIFIED:
 -DIMENSIONS AND TOLERANCES AS PER ASME Y14.5M-1994
 -DIMENSIONS ARE IN INCHES AND LMMJ.
 -REMOVE ALL BURRS AND SHARP EDGES .005 (0.13) MAX.
 -DO NOT SCALE DRAWING.

TOL DECIMALS
 .X ± .02 (0.51)
 .XX ± .01 (0.25)
 .XXX ± .005 (0.127)
 .XXXX ± .0005 (0.0127)

TOL ANGLES
 X° ± 1'
 SURFACE ROUGHNESS
 63 (1.6) ✓

CRITICAL DIM
 SPC DIM
 KEY CHARACTERISTIC

DRAWN Ian Long DATE 01-23-03 SURFACE AREA
 CHECKED Steve Nguyen DATE 01-31-03 REF
 APPROVED Neil Mahaffy DATE 01-31-03 PART NO SEE TABLE

SCALE 1.000
 CAGE CODE 71468
 ITT Industries
 ITT Cannon
 666 E. DYER RD, SANTA ANA, CA 92705

DESCRIPTION CONNECTOR, PLUG, ELECTRICAL, CA3108E-BS THRU 36 AIRBUS #NSA938925

3RD ANGLE PROJECTION
 SIZE D USE C SHEET 1 / 1
 010380Y0001
 REV -

X-ON Electronics

Largest Supplier of Electrical and Electronic Components

Click to view similar products for [Circular MIL Spec Connector](#) category:

Click to view products by [ITT](#) manufacturer:

Other Similar products are found below :

[89075GULPR](#) [0025-262-542](#) [0025-264-3014](#) [58-570121-04S](#) [0134-213-1208](#) [0134-213-2209](#) [0025-258-000](#) [60-042022-07P](#) [60-042022-19P](#)
[60-042022-23P](#) [60-042217-10P](#) [60-042217-11P](#) [0114-201-1278](#) [012-0467-000](#) [602GB06EG24-61SN](#) [0134-201-1207](#) [0134-213-1006](#) [6104-](#)
[207-2302](#) [6104-208-1902](#) [61-168211-04P](#) [61-168617-10P](#) [6131-202-19149P](#) [6131-204-21149P](#) [6131-208-13149P](#) [6131-209-17149P](#) [6131-](#)
[210-11149P](#) [6131-211-19149P](#) [6131-216-19149P](#) [6131-259-21149P](#) [6131-259-23149P](#) [6131-265-17149P](#) [6131-265-19149P](#) [CS3100A18-1P-](#)
[472](#) [CS3100A-36-77P](#) [CS3101A-16-55P](#) [CS3102A-10SL-55P](#) [CS3102A-14S-58P](#) [CS3102A-18-1P116](#) [CS3102A-32-17P](#) [CS3102A32-25S](#)
[CS3102C18-4P-472](#) [CS3106A10SL3S004](#) [CS3106A-18-73S](#) [CS3108A-14S-52S](#) [CS3108A-28-51S](#) [6162-233-1277](#) [6162-324-1231](#)
[M243082296Z](#) [M2884010AC1S1](#) [CT0-24-10SC](#)