

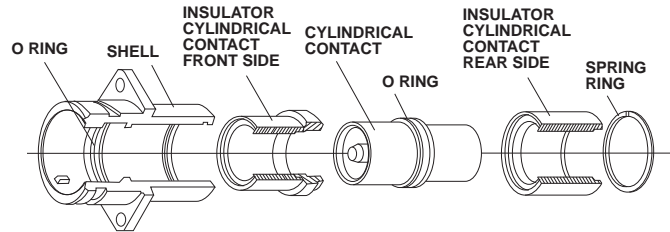
These connectors are used to transmit very high current at low voltage, as for example in the electrical equipment of military land and sea-borne vehicles and in industrial facilities. The connectors meet the mating dimensions, mechanical features and rear panel installation requirements of VG 95234. Ultraflexible, shielded weld cables are terminated to the connectors.

These high power connectors feature one contact in a two-piece rigid insulator. The aluminum shell has a chromate finish over cadmium. The operating temperature ranges from -55°C to +125°C (-67°F to +257°F). The contacts of copper or copper alloy with hard silver finish are designed for crimping or termination to solid copper conductors with threaded bolts. The mechanical durability is a minimum of 500 mating cycles. The crimp contacts accept wires per DIN 46438 (25-240 sq. mm).

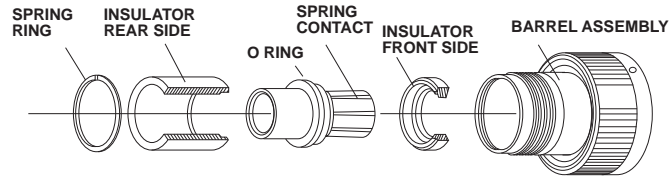
Contact retention is achieved by the two-piece insulator which is fixed to the shell with a snap-in ring. This allows unlimited exchange of the crimp contacts. The bayonet coupling assures fast coupling and uncoupling. Color-coded snap-in points indicate positive mating. Plugs and receptacles are waterproof in mated conditions up to 1 bar (35 feet of water).

Conector Design - CGE

Receptacle CGE2...B-04



Plug CGE6...B-03



How To Order - CGE

SERIES

CGE - ITT Cannon Prefix

SHELL STYLE

- 0 - Wall mounting receptacle with mounting flange
- 1 - Cable connecting plug
- 2 - Box mounting receptacle with mounting flange
- 6 - Straight plug
- 8 - 90° angle plug

CLASS

E - Environmental, class JP 07, according to DIN 40050

SHELL SIZE

16 - 18 - 22 - 28 - 32

CONTACT ARRANGEMENT

- 16H2 - Shell size 16, 1 contact H2
- 18H5 - Shell size 18, 1 contact H5
- 22H9 - Shell size 22, 1 contact H9
- 28H15 - Shell size 28, 1 contact H15
- 32H24 - Shell size 32, 1 contact H24

SERIES

SHELL STYLE

CLASS

SHELL SIZE

CONTACT ARRANGEMENT

CONTACT SIZE

CONTACT TYPE

ALTERNATE KEYWAY POLARIZATION

BAYONET COUPLING

MODIFICATION

CONTACT SIZE

- H2 - 3 AWG
- H5 - 0 AWG
- H9 - 000 AWG
- H15 - 250 MCM
- H24 - 400 MCM

CONTACT TYPE

- F - Spring contact
- Z - Cylindrical contact

ALTERNATE KEYWAY POLARIZATION

- Standard - 180°
- W - 120°

CGE 6 E 32 H 24 F W B ***

BAYONET COUPLING

- B - Bayonet coupling

MODIFICATIONS

- 05 - Through holes in flange
- 03 - Adapter for heat shrink boots, metric size crimp contact
- 04 - Rear panel mounting, four threaded holes, metric size crimp contact
- 04-05 - Same as 04, however with four through holes
- 14 - shielded version, metric size crimp contact
- 16 - Thread bolt termination, front panel mounting, 0-ring for sealing between wall and receptacle (only for style CGE2EB)

Performance and Material Specifications -CGE

MECHANICAL

| | |
|--------------------------------|---|
| Admissible ambient temperature | - 55°C to +125°C |
| Class | JP 07 according to DIN 40050 Test pressure: 1 bar overpressure Test duration 12 hours |
| Vibration | 200 m/s ² for 10 to 2000 Hz |
| Mechanical durability | 500 mating cycles |

COUPLING TORQUE

(IN WIRED CONDITION ACC. TO VG 95319 Part 2, Test No. 5.8.2.)

| Shell Size | max. closing/opening torque | | min. opening torque | |
|------------|-----------------------------|-------|---------------------|------|
| | Nm | ozm | Nm | ozm |
| 16 | 5.5 | 19.78 | 0,5 | 1.80 |
| 18 | 8.0 | 28.78 | 0,6 | 2.16 |
| 22 | 11.0 | 39.57 | 0,8 | 2.88 |
| 28 | 17.0 | 61.15 | 0,9 | 3.24 |
| 32 | 19.0 | 68.34 | 1,0 | 3.60 |

3,597 = (Oz & Ozm)

CONTACT RETENTION

(ACC. TO VG 95319, PART 2. TEST NO. 5.4)

| Contact Size | Metric Wire Size (mm ²) | American Wire Size (AWG) or (MCM) | Test Force | |
|--------------|-------------------------------------|-----------------------------------|------------|------------|
| | | | (N min.) | (Oz. min.) |
| H2 | 25 | 3 AWG | 100 | 359.70 |
| H5 | 50 | 0 AWG | 120 | 431.64 |
| H9 | 95 | 000 AWG | 140 | 503.58 |
| H15 | 150 | 250 AWG | 160 | 575.52 |
| H24 | 240 | 400 AWG | 200 | 719.4 |

ELECTRICAL DATA

CONTACT RATING

(amps) at 125°C ambient temperature:

| Shell size | 16 | 18 | 22 | 28 | 32 |
|---|-----|------|------|------|------|
| Contact size | H2 | H5 | H9 | H15 | H24 |
| Max. current rating (amps at 125°C ambient temperature) | 250 | 300 | 500 | 650 | 1000 |
| Max. short-time load approx. 0,5 - 1 sec. (amps.) | 750 | 1000 | 2000 | 3000 | 5000 |

AIR AND CREEPAGE PATHS

| | |
|---------------|------------------|
| Air path | .118 (3.00) min. |
| Creepage path | .197 (5.00) min. |

CONTACT RESISTANCE

| Contact Size | H2 | H5 | H9 | H15 | H24 |
|--------------------------------|-----|-----|------|-----|------|
| Contact resistance (mOhm max.) | 0,6 | 0,3 | 0,15 | 0,1 | 0,07 |

INSULATOR RESISTANCE

min. 5000 MOhm

MATERIALS AND FINISHES

| | |
|-----------|-----------------------------|
| Shell | Aluminum alloy |
| Finish | Olive chromate over cadmium |
| Insulator | PTFE |
| Contact | Copper and copper alloy |
| Finish | Hard silver |
| O-Rings | Viton |

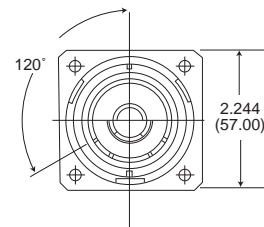
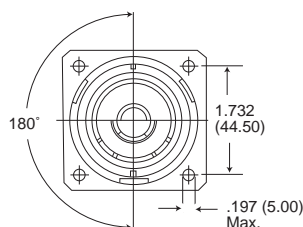
Alternate Keyway Positions - CGE

To avoid mismatching of identical connectors, the keyway of the CGE connectors is available in two different positions:

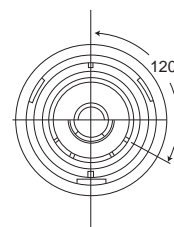
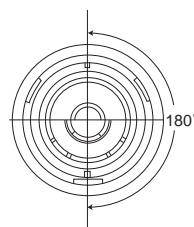
Standard Keyway position = 180°

Keyway position W = 120°

Keyway position of receptacles and cable connecting plugs.



Keyway position of straight and 90° angle plugs.



X-ON Electronics

Largest Supplier of Electrical and Electronic Components

Click to view similar products for [Circular MIL Spec Tools, Hardware & Accessories](#) category:

Click to view products by [ITT](#) manufacturer:

Other Similar products are found below :

[809-199-3](#) [001104](#) [300 04](#) [600-006-16](#) [600-079-06](#) [M10-101982-143](#) [M10-101982-163](#) [M10-101983-183](#) [M10-150912-083](#) [M10-454396-008](#) [602GB18808](#) [M225201-06](#) [M24758-20E21](#) [M2887610-BC](#) [M2887615-CD](#) [M38999/9-19B](#) [62GB-812-10](#) [630A007NF083A](#) [630B007M051A](#) [630BJ003NF032H](#) [637-149NF04B](#) [M39029/29-215](#) [650FS002NF16](#) [M81969-14-02](#) [660-008NF14S7-01](#) [660-009M22H8-03](#) [660-013NF19U6-210](#) [660-015M10S6-17](#) [660-015NF10S5-01](#) [660-015NF14R3.5-01](#) [660-023NF19H6-19](#) [660-024N09S5-104](#) [660-024NF11S12-01](#) [660-024NF11S3-01](#) [660-050XM17F4-01](#) [660-068NF25R6-30G](#) [660-070M23S8-04](#) [660-073MTCH9-20](#) [M83723/60-116RC](#) [M83723/61-18W](#) [M83723/61-218R](#) [M83723/61-224W](#) [667-224NF16](#) [M85049/118S22A](#) [M85049/126S11N](#) [M85049130-07M](#) [M85049140-09BC](#) [M85049/41-16A W/B](#) [687-697NF-1](#) [M85049/75-14-1](#) [M8504980-8](#)