



MDM connectors are used in applications requiring highly reliable, extremely small, light-weight connectors with higher density contact configurations than available in traditional rectangular connectors. They are available in 8 shell sizes accommodating from 9 to 100 contacts, and special arrangements of power and coaxial contacts.

These connectors are designed to meet the rapidly increasing demands for an environmental, high performance, rugged, moisture-sealed microminiature connector. This connector

employs size 24 MICROPIN™/MICROSOCKET™ contacts on .050 (1.27) centers in a contact density identical to the standard MICRO-D connector series, but with these additional features:

- Aluminum shells to provide greater strength, prevent chipping, cracking or breaking, offer electromagnetic (EMI) and RFI shielding.
- Silicone elastomer compression interfacial seal to provide a moisture and humidity seal between each contact and between contacts and shell.

Specifications

| STANDARD MATERIALS AND FINISHES | | MECHANICAL FEATURES | |
|---|---|-------------------------|---|
| Shell | - 6061-T6 Aluminum alloy per QQ-A-200/8, yellow chromate/cadmium, Type II, Class 3 over electroless nickel per SAE AMS-C-26074, Class 4. | Coupling | - Friction/jackscrews |
| Insulator | - Liquid Crystal Polymer per MIL-M-24519, Type GLCP-30F (9-100) - Glass filled diallyl phthalate per MIL-M-14, Type SDGF (7*2 and 24*4) - Polyphenylene sulfide per MIL-M-24519, Type GST-40F (16*5) - Polyester per MIL-M-24519, Type GPT-30F (10*10) | Polarization | - Keystone-shaped shells |
| Contacts | - Copper alloy, gold plate | Contact Spacing Centers | - .050 (1.27) |
| Mounting Hardware Kit, Jackpost (3) items | - 300 Series stainless steel, passivate | Shell Styles | - Plug and receptacle |
| Washer | - 400 Series stainless steel, passivate | No. of Contacts | - 9 thru 100 signal; 5 signal/2 coaxial; 5 signal/2 power; 11 signal/5 coaxial; 11 signal/5 power; 0 signal/10 coaxial; 0 signal/10 power; 20 signal/4 coaxial; 20 signal/4 power |
| Standard Epoxy | - Hysol EE4215/HD3561, color black or Hysol EE4198/HD3561, color green | Coaxial Cable | - RG - 178/U |
| | | Wire Size | - #24 thru #32 AWG |
| | | Contact Termination | - Multiple indent crimp |

Performance Data

The table below summarizes the results of key tests performed in accordance with MIL-STD-1344, where applicable. Data is applicable to standard connectors with standard termination. Variations may affect this data, so please consult customer service for further information on your requirements.

| Test | Method | Criteria of Acceptance |
|----------------------------------|--|---|
| Dielectric Withstanding Voltage | Method 3001: 600 VAC at sea level 150 VAC at 70,00' altitude | No breakdown No breakdown |
| Insulation Resistance | Method 3003 | 5,000 megohms minimum |
| Thermal Shock | Method 1003, Condition A: - 55°C to +125°C | No physical damage |
| Physical Shock | Method 2004, Condition E: 50 G's, 3 axes, 6 millisecond duration sawtooth pulse | No physical damage No loss of continuity > 1 µsec |
| Vibration | Method 2005, Condition IV: 20 G's, 10-2,000 Hz. 12 hrs | No physical damage No loss of continuity > 1 µsec |
| Durability | 500 cycles of mating and unmating, 500 CPH max. | No mechanical or electrical defects |
| Moisture Resistance | Method 1002, Type II, omit steps 7a & 7b | Insulation resistance > 100 megohms |
| Salt Spray | Method 1001, Condition B: 48 hours | Shall be capable of mating and unmating, and meet contact resistance requirements |
| Contact Resistance (MIL-STD-202) | Method 1001, Condition B: At 3 amps At 1 milliamp | 8 milliohms maximum 10 milliohms maximum |
| Contact Retention | Per MIL-DTL-83513 | 5 lb. minimum axial load |

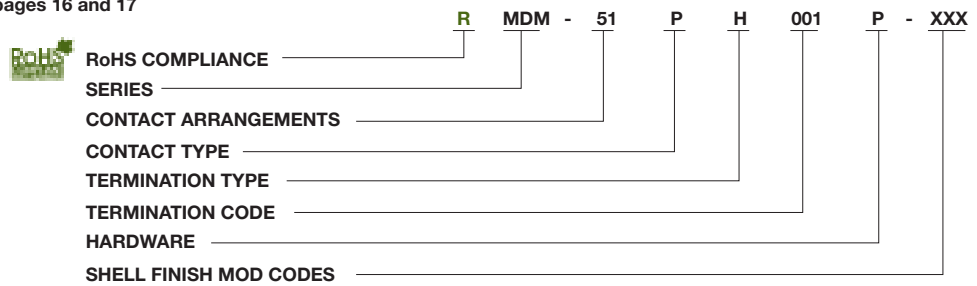
Dimensions shown in inch (mm)
Specifications and dimensions subject to change

www.ittcannon.com



How to Order

For MIL-DTL-83513 ordering information see pages 16 and 17



SERIES

MDM: (Size 9-100) Liquid Crystal Polymer (LCP)
MDM: (Combo Layout) Diallyl Phthalate (DAP)

CONTACT ARRANGEMENTS

9-15-21-25-31-37-51-100 (standard)
16C5, 10C10, 7C2, 24C4 (coaxial) } or combination of
16P5, 10P10, 7P2, 24P4 (power) } coax and power

CONTACT TYPE

P - Pin S - Socket

TERMINATION TYPE

H - Harness-insulated wire.
L - Solid-uninsulated wire.
S - Solder pot to accept #26 AWG MAX.
harness wire. (Not available with power
contact arrangements.)

HARDWARE

M - Military specification hardware, see
page 11 for military hardware codes.
P - Jackpost
K - Jackscrew-standard profile
L - Jackscrew-low profile
F - Float mount
B - No hardware standard
.091 (2.31) dia. hole for sizes 9-51;
.120 (3.05) dia. hole for size 100.
A - .125 (3.18) dia. mounting holes for sizes 9-51;
.166 (4.22) dia. hole for size 100.
B1 - .1475 (3.75) dia. hole for size 100
(Per MIL-DTL-83513)

TERMINATION CODE*

(H) 001 - 18", 7/34 strand, #26 AWG,
MIL-W-16878/4, Type E Teflon, yellow.
(H) 003 - 18", 7/34 strand, #26 AWG,
MIL-W-16878/4, Type E Teflon,
color coded to MIL-STD-681 System I.
(L) 1 - 1/2" uninsulated solid #25
AWG gold plated copper.
(L) 2 - 1" uninsulated solid #25 AWG
gold plated copper.

SHELL FINISH MOD CODES

No Number - (Standard cadmium/yellow
chromate over nickel
A174 - Electroless nickel
A172 - Gold over nickel
A141 - Irridite/alodine
A30 - Black anodize

*See page 79 and 81 for additional Termination codes.



COTS or Non Mil-Spec or Commercial or Industrial Standard Wire Termination Codes

Cannon Modification Code (Not MS)

The following termination codes are listed for your information. For additional codes please refer to Appendix on page 79 and 81. **All wire lengths are minimum.**

Harness Type (H)

#26 AWG per MIL-W-16878/4, 7/34 strand, type E Teflon, stranded.

| Length | All Yellow | Color Coded* |
|--------------|------------|--------------|
| 3 (76.2) | H020 | H027 |
| 6 (152.4) | H019 | H016 |
| 8 (203.2) | H026 | H034 |
| 10 (254.0) | H029 | H025 |
| 12 (304.8) | H028 | H002 |
| 18 (457.2) | H001 | H003 |
| 20 (508.0) | H038 | H023 |
| 24 (609.6) | H009 | H004 |
| 30 (762.0) | H010 | H005 |
| 36 (914.4) | H011 | H006 |
| 48 (1219.2) | H013 | H048 |
| 72 (1828.8) | H017 | H046 |
| 120 (3048.0) | H042 | H041 |

* Cavity #1 black

Solid Uninsulated Type (L)

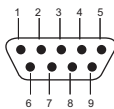
#25 AWG gold plated copper

| Termination Code | Length |
|------------------|---------------|
| L61 | .125 (3.18) |
| L56 | .150 (3.81) |
| L57 | .190 (4.83) |
| L39 | .250 (6.35) |
| L58 | .375 (9.52) |
| L1 | .500 (12.70) |
| L14 | .750 (19.05) |
| L2 | 1.000 (25.40) |
| L7 | 1.500 (38.10) |
| L6 | 2.000 (50.80) |
| L16 | 2.500 (63.50) |
| L10 | 3.000 (76.20) |

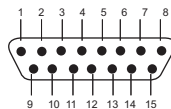
Contact Arrangements

(Face View of Pin insert - Use Reverse Order for Socket Side)

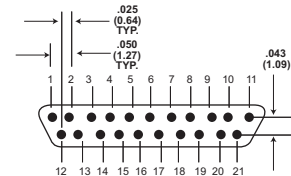
Standard



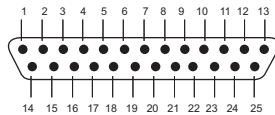
9 Contacts



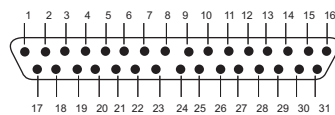
15 Contacts



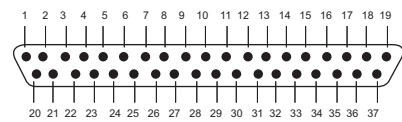
21 Contacts



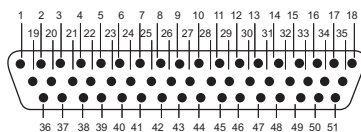
25 Contacts



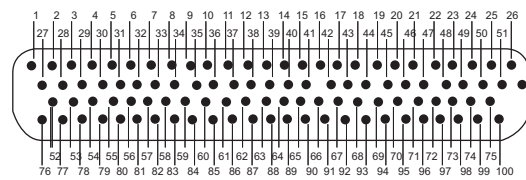
31 Contacts



37 Contacts

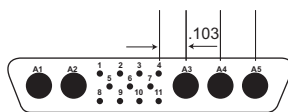


51 Contacts

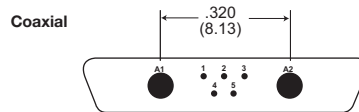


100 Contacts

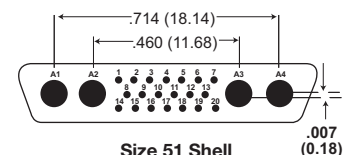
Contact identification numbers are for reference only and do not appear on insulator or connector body.



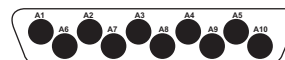
Size 51 Shell
11 Micro contact
5 Coax or 5 Power



Size 25 Shell
5 Micro contact
2 Coax or 2 Power



Size 51 Shell
20 Micro contacts
4 Coax or 4 Power
(Not MS)



Size 100 Shell
0 Micro contact
10 Coax or 10 Power

Dimensions shown in inch (mm)

Specifications and dimensions subject to change

www.ittcannon.com

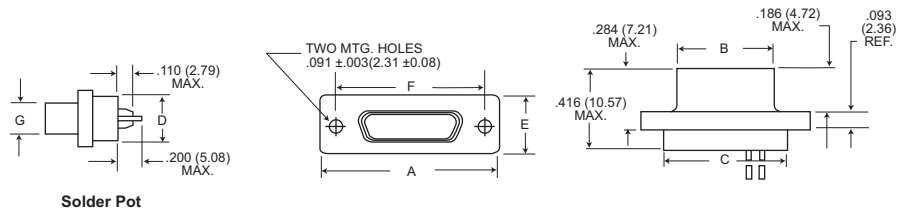


Micro-D Metal Shell - .050" Contact Spacing

MDM

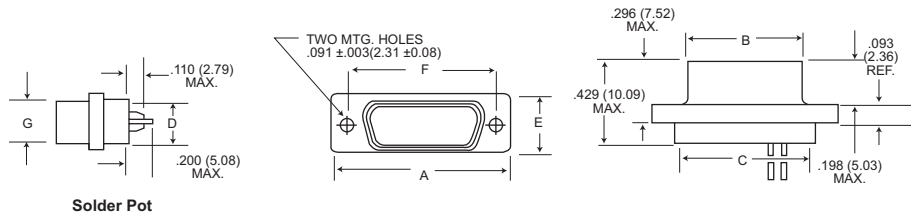
COTS or Non Mil-Spec or Commercial or Industrial Shell Dimensions (Conforms to MIL-DTL-83513)

Plug



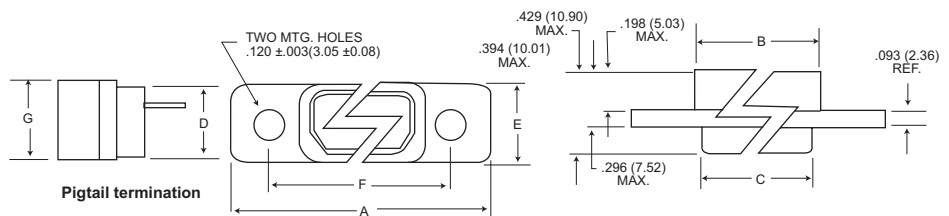
Solder Pot

Receptacle



Solder Pot

Receptacle (MDM-100 only)



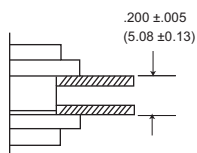
Pigtail termination

| Part Number By Shell Size | A Max. | B Max. | C Max. | D Max. | E Max. | F + .005 (0.13) | G Max. | Average Weights** oz. (gm.) ±5% |
|------------------------------|---------------|---------------|---------------|-------------|--------------|-----------------------|--------------|------------------------------------|
| MDM-9P* | .785 (19.94) | .334 (8.48) | .400 (10.16) | .270 (6.86) | .308 (7.82) | .565 (14.35) | .185 (4.70) | .063 (1.79) |
| MDM-9S* | .785 (19.94) | .402 (10.21) | .400 (10.16) | .270 (6.86) | .308 (7.82) | .565 (14.35) | .253 (6.43) | .063 (1.79) |
| MDM-15P* | .935 (23.75) | .484 (12.29) | .550 (13.97) | .270 (6.86) | .308 (7.82) | .715 (18.16) | .185 (4.70) | .084 (2.39) |
| MDM-15S* | .935 (23.75) | .552 (13.97) | .550 (13.97) | .270 (6.86) | .308 (7.82) | .715 (18.16) | .253 (6.43) | .083 (2.37) |
| MDM-21P* | 1.085 (27.56) | .634 (16.10) | .700 (17.78) | .270 (6.86) | .308 (7.82) | .865 (21.97) | .185 (4.70) | .105 (2.99) |
| MDM-21S* | 1.085 (27.56) | .702 (17.83) | .700 (17.78) | .270 (6.86) | .308 (7.82) | .865 (21.97) | .253 (6.43) | .104 (2.97) |
| MDM-25P* | 1.185 (30.10) | .734 (18.64) | .800 (20.32) | .270 (6.86) | .308 (7.82) | .965 (24.51) | .185 (4.70) | .119 (3.39) |
| MDM-25S* | 1.185 (30.10) | .802 (20.37) | .800 (20.32) | .270 (6.86) | .308 (7.82) | .965 (24.51) | .253 (6.43) | .118 (3.36) |
| MDM-31P* | 1.335 (33.91) | .884 (22.45) | .950 (24.13) | .270 (6.86) | .308 (7.82) | 1.115 (28.32) | .185 (4.70) | .140 (3.99) |
| MDM-31S* | 1.335 (33.91) | .952 (24.18) | .950 (24.13) | .270 (6.86) | .308 (7.82) | 1.115 (28.32) | .253 (6.43) | .139 (3.96) |
| MDM-37P* | 1.485 (37.72) | 1.034 (26.26) | 1.100 (27.94) | .270 (6.86) | .308 (7.82) | 1.265 (32.13) | .185 (4.70) | .161 (4.59) |
| MDM-37S* | 1.485 (37.72) | 1.102 (27.99) | 1.100 (27.94) | .270 (6.86) | .308 (7.82) | 1.265 (32.13) | .253 (6.43) | .160 (4.56) |
| MDM-51P* | 1.435 (36.45) | .984 (24.99) | 1.050 (26.67) | .310 (7.87) | .351 (8.92) | 1.215 (30.86) | .228 (5.79) | .193 (5.50) |
| MDM-51S* | 1.435 (36.45) | 1.052 (26.72) | 1.050 (26.67) | .310 (7.87) | .351 (8.92) | 1.215 (30.86) | .296 (7.52) | .188 (5.35) |
| MDM-100P* | 2.170 (55.12) | 1.384 (35.15) | 1.442 (36.63) | .360 (9.14) | .394 (10.01) | 1.800 (45.72) | .271 (6.88) | .500 (14.3) |
| MDM-100S* | 2.170 (55.12) | 1.508 (38.10) | 1.442 (36.63) | .360 (9.14) | .394 (10.01) | 1.800 (45.72) | .394 (10.01) | 1.040 (29.5) |

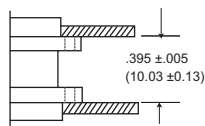
*Add lead type and length; see How To Order.

***Weight given is 1/2", insulated, solid, #25 AWG gold plated copper pigtails.

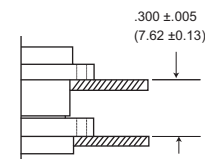
Panel Mounting Dimensions (Sizes 9 - 100)



Plug and Receptacle
Rear Mounted



Plug and Receptacle
Front Mounted



Plug Front Mounted
Receptacle Rear Mounted



Dimensions shown in inch (mm)
Specifications and dimensions subject to change

www.ittcannon.com

Panel Cutouts

NOTE: See page 13 for rear panel mounting configuration.

Shell Sizes 9 thru 51

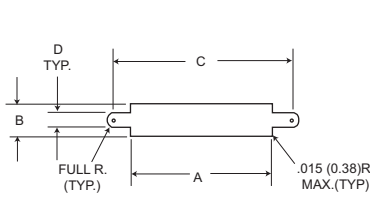


Figure 1
Front Mounting

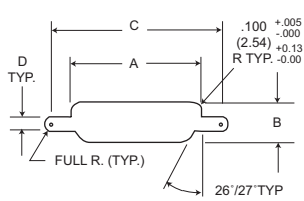


Figure 2
Rear Mounting

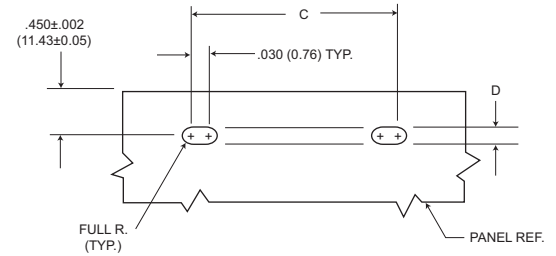


Figure 3
Edgeboard Mounting

Shell Size 100

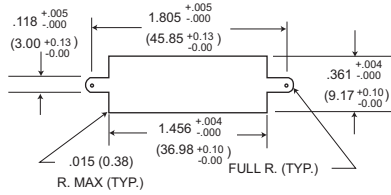


Figure 1
Front Mounting

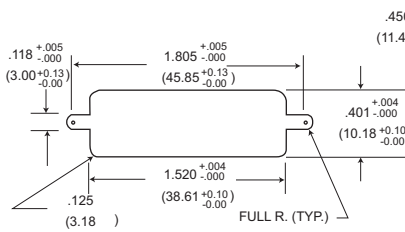


Figure 2
Rear Mounting

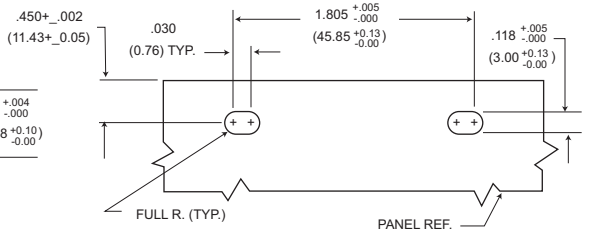


Figure 3
Edgeboard Mounting

For 9-51 Shell Sizes

NOTES:

1. Front panel mounting is the preferred mounting method. Front panel mounting dimensions (figure 1) will accommodate either #2-56 screws or jackpost hardware.
2. Rear panel mount dimensions (figure 2) will accommodate #2-56 screw hardware only. When mounting the connector with rear panel mount jackpost see the panel cut-out dimensions.
3. Edgeboard mounting bracket (figure 3) uses #2-56 screws. Dimension .450±.002 (11.43±0.05) locates the MDM receptacle flush with the end of the board.

For 100 Shell Size

NOTES:

1. Front mounting is the preferred mounting method. Front panel mounting dimensions (figure 1) will accommodate either #4-40 screws or jackpost hardware.
2. Rear panel mount dimensions (figure 2) will accommodate #4-40 screw hardware only see the panel cut-out dimensions.
3. Edgeboard mounting bracket (figure 3) uses #4-40 screws. Dimension .450±.002 (11.43±0.05) locates the MDM receptacle flush with the end of the board.

| Shell Size | Cutout Figure | A +.004 -.000 | B +.004 -.000 | C +.005 -.000 | D +.005 -.000 |
|------------|---------------|---------------------|---------------------|---------------------|---------------------|
| 9 | 1 | .408 | .271 | .570 | .089 |
| | 2 | .401 | .252 | .570 | .089 |
| | 3 | - | - | .570 | .089 |
| 15 | 1 | .558 | .271 | .720 | .089 |
| | 2 | .551 | .252 | .720 | .089 |
| | 3 | - | - | .720 | .089 |
| 21 | 1 | .708 | .271 | .870 | .089 |
| | 2 | .701 | .252 | .870 | .089 |
| | 3 | - | - | .870 | .089 |
| 25 | 1 | .808 | .271 | .970 | .089 |
| | 2 | .801 | .252 | .970 | .089 |
| | 3 | - | - | .970 | .089 |
| 31 | 1 | .958 | .271 | 1.120 | .089 |
| | 2 | .951 | .252 | 1.120 | .089 |
| | 3 | - | - | 1.120 | .089 |
| 37 | 1 | 1.108 | .271 | 1.270 | .089 |
| | 2 | 1.101 | .252 | 1.270 | .089 |
| | 3 | - | - | 1.270 | .089 |
| 51 | 1 | 1.058 | .315 | 1.220 | .089 |
| | 2 | 1.051 | .295 | 1.220 | .089 |
| | 3 | - | - | 1.220 | .089 |

Dimensions shown in inch (mm)

Specifications and dimensions subject to change

www.ittcannon.com



Mounting Hardware Views (for sizes 9-51)

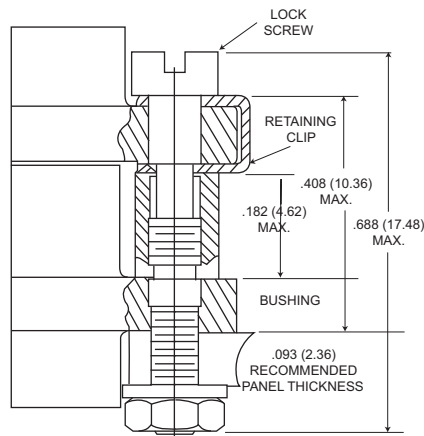
This hardware supplied unassembled.



Screw Lock Assembly

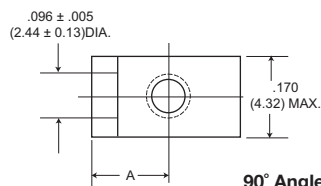


90° Angle Mounting Bracket

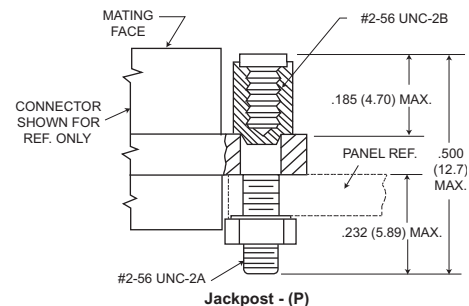


Screw Lock Assembly*

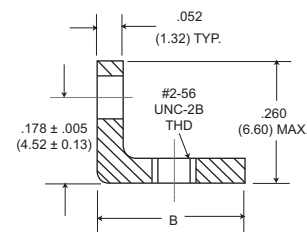
*NOTE Torque value is 2.5 in/lbs max.



90° Angle Mounting Bracket



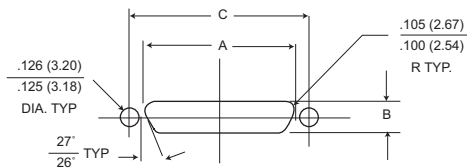
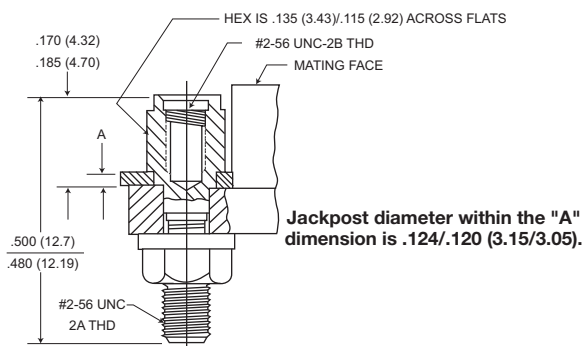
Jackpost - (P)



| Description | Part Number | A | |
|---|--------------|------------------|-------------|
| | | +/- .005 (±0.13) | B Max. |
| Screw Lock Assembly | 322-9500-000 | | N/A |
| Jackpost kit | 320-9505-000 | | N/A |
| Mounting Bracket 90° MDM for 9 thru 37 Shell Sizes | 015-9516-002 | .147 (3.73) | .308 (7.82) |
| Mounting Bracket 90° MDM for 51 Shell Size | 015-9516-003 | .169 (4.29) | .350 (8.89) |

NOTES: Screw lock assembly (322-9500-000) can be used for front mounting only. Jackpost kit (320-9505-000) consists of two assemblies, shipped unassembled.

Jackpost Bushing (for rear panel mounting-for sizes 9-51)



Plug and Receptacle Dimensions

| Shell Size | A | | B | | C |
|------------|---------------|---------------|---------------|---------------|---|
| | + .004 (0.10) | - .000 (0.00) | + .004 (0.10) | - .000 (0.00) | |
| 9 | .401 (10.19) | .252 (6.40) | .565 (14.35) | | |
| 15 | .551 (14.00) | .252 (6.40) | .715 (18.16) | | |
| 21 | .701 (17.81) | .252 (6.40) | .865 (21.97) | | |
| 25 | .801 (20.34) | .252 (6.40) | .965 (24.51) | | |
| 31 | .951 (24.16) | .252 (6.40) | 1.115 (28.34) | | |
| 37 | 1.101 (27.97) | .252 (6.40) | 1.265 (32.13) | | |
| 51 | 1.051 (26.70) | .295 (7.49) | 1.215 (30.86) | | |

| Panel A Thickness | A + .005 (0.13) - .000 (0.00) | Jackpost Kit Number* |
|-------------------|-------------------------------------|----------------------|
| 3/32 (2.4) | .087 (2.21) | 320-9505-007 |
| 1/16 (1.6) | .056 (1.42) | 320-9505-006 |
| 3/64 (1.2) | .042 (1.07) | 320-9505-005 |
| 1/32 (0.8) | .025 (0.64) | 320-9505-004 |

*A kit consists of 2 jackpost, 2 nuts, 2 washers.

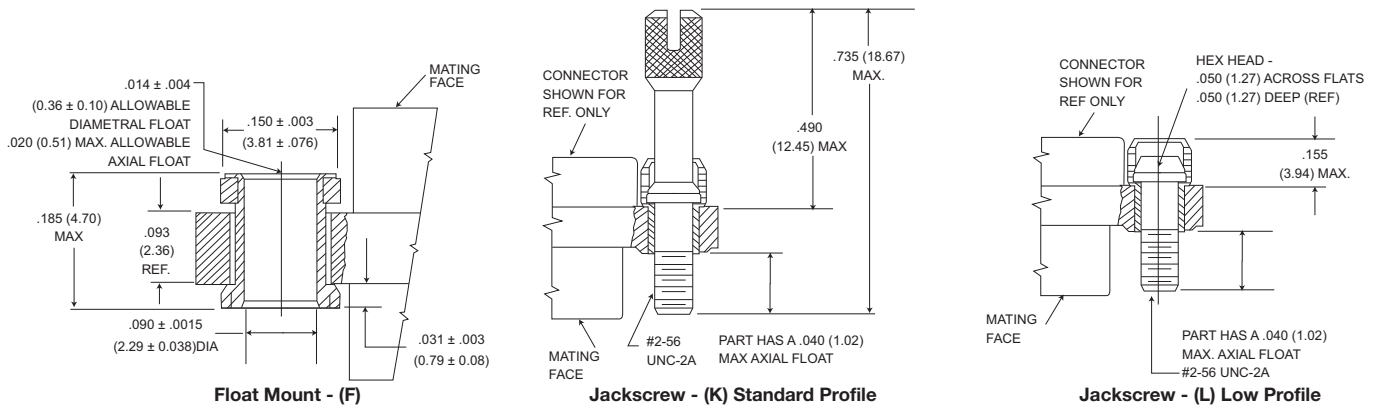


Dimensions shown in inch (mm)
Specifications and dimensions subject to change

www.ittcannon.com

Mounting Hardware Views (sizes 9-51)

This hardware is factory installed.



Shown here is a cutaway view of the float mount for the MDM connector. The basic shell dimensions are the same for the float mount and the screw mounting hole configurations. View shown is for standard float mount front panel mounting. Reverse mounting is available on request.

* NOTE: Torque values are as follows:
 Low Profile Jackscrew (L)-2.5 in-lbs
 Standard Jackscrew (K)-2.5 in-lbs

Mounting Hardware to Military Specification (for sizes 9 - 100) per MIL-DTL-83513/5

This hardware supplied in kits unassembled (2 pieces of each item).

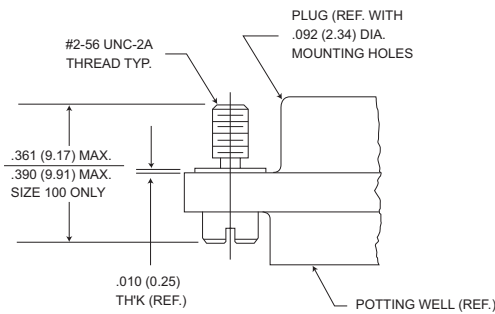
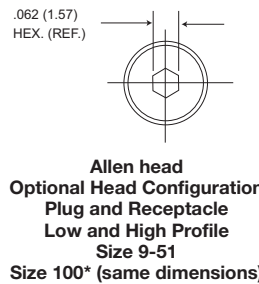


Figure 1. Jackscrew - Low profile Slotted Head Size 9-51 Size 100*



Allen head Optional Head Configuration Plug and Receptacle Low and High Profile Size 9-51 Size 100* (same dimensions)

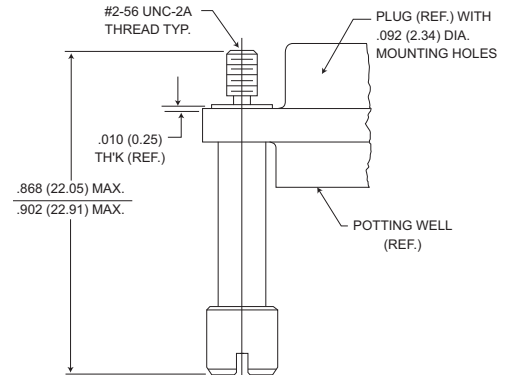


Figure 2. Jackscrew - High Profile Slotted Head Size 9-51 Size 100*

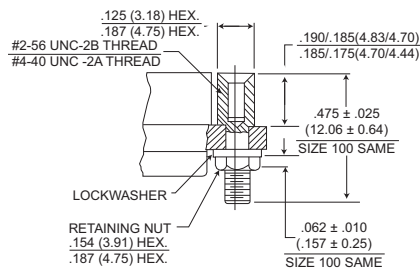


Figure 3. Jackpost Assembly Size 9-51 Size 100*

To order hardware kits separately, order either by M83513/5-** or by 320-950X-XXX.

| Description | Size 9-51 | | Size 100* | |
|--|-----------|--------------|-----------|------------------|
| | Mod Code | Part Number | Mod Code | Part Number |
| Slotted Head Jackscrew Assy Low Profile (Figure 1) | M5 | 320-9508-025 | 05 | M15 320-9508-021 |
| Slotted Head Jackscrew Assy Low Profile (Figure 2) | M6 | 320-9508-027 | 06 | M16 320-9508-023 |
| Allen Head Jackscrew Assy Low Profile (Figure 1) | M2 | 320-9508-026 | 02 | M12 320-9508-022 |
| Allen Head Jackscrew Assy High Profile (Figure 2) | M3 | 320-9508-028 | 03 | M13 320-9508-024 |
| Jackpost Assy (Figure 3) | M7 | 320-9505-033 | 07 | M17 320-9505-030 |

*Size 100 requires B1 size mounting holes for Mil-Spec hardware

Note: Torque values as follows:

Size 9-51 4.0 in-lbs

Size 100 6.0 in-lbs

Dimensions shown in inch (mm)

Specifications and dimensions subject to change

www.ittcannon.com



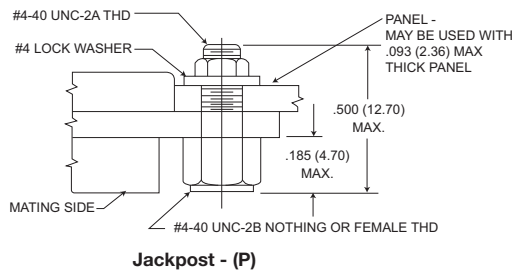
Mounting Hardware Views (for size 100)

This hardware supplied unassembled.

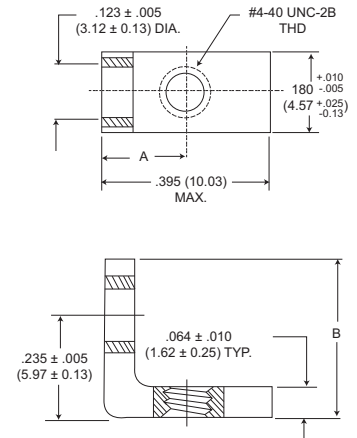


90° Angle Mounting Bracket

Note: Size 100 requires .120 dia (B) mounting hole when using Commercial (P) jackpost kits.



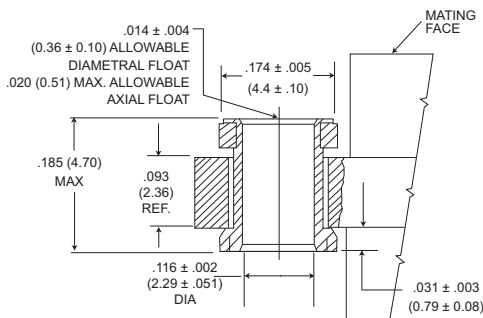
Jackpost - (P)



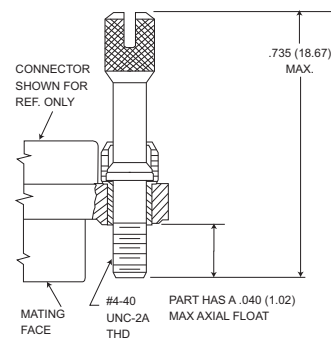
90° Angle Mounting Bracket

| Description | Part Number | A ± .005 (0.13) | B Max. |
|--------------------------|--------------|--------------------|-------------|
| Jackpost kit | 320-9505-015 | N/A | |
| Mounting Bracket 90° MDM | 015-9528-000 | .191 (4.85) | .370 (9.40) |

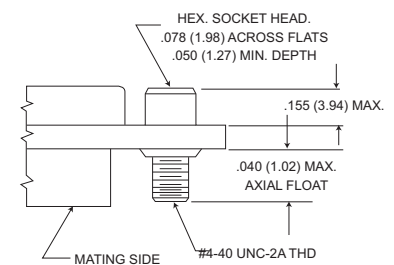
This hardware is factory installed.



Float Mount - (F) Std.



Jackscrew - (K) Standard



Jackscrew - (L) (Low Profile)

*NOTE: Torque values are as follows:
Low Profile Jackscrew (L)-4.0 in-lbs
Standard Profile Jackscrew (K)-4.0 in-lbs

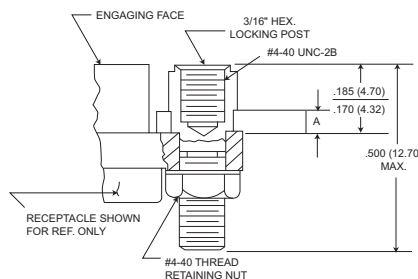
Jackpost Bushing (for Rear Panel Mounting)

| Panel Thickness | A + .005 (0.13) - .000 (0.00) | Jackpost Kit Number* |
|-----------------|-------------------------------------|----------------------|
| 3/32 (2.4) | .087 (2.21) | 320-9505-013 |
| 1/16 (1.6) | .058 (1.42) | 320-9505-012 |
| 1/32 (0.8) | .025 (0.64) | 320-9505-010 |
| 3/64 (1.2) | .042 (1.07) | 320-9505-011 |

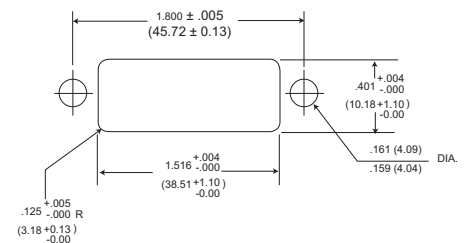
*2 jackposts, 2 nuts, 2 washers

Torque value for size 100

Note: Size 100 requires B mounting hole shell size when using rear panel mount jackposts



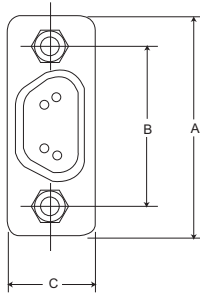
Dimensions for Rear Panel Mounting



Dimensions shown in inch (mm)
Specifications and dimensions subject to change

www.ittcannon.com

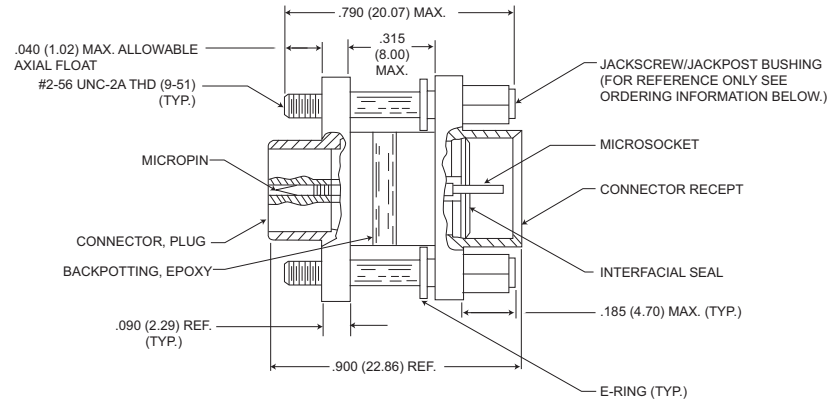
Connector Saver



Save wear and tear on your equipment and systems connectors by using the "Connector Saver".

The multi-matings and unmatings experienced by most connectors during testing and final check out can be eliminated.

Simply mate the "Connectors Saver" to your unit and use the opposite side for your testing interface...less wear, less tear, less chance of damage. It is available in all eight standard MDM layouts. Mating hardware is available and can be ordered either separately or included with the connector saver.



MDM Size 9 Shown

| Size | Electroless Nickel (A174) Plated | | Cadmium over Nickel (A101) Plated | | *Hardware Kits | A Max. | B ± .005 (0.13) | C Max. |
|------|----------------------------------|--------------|-----------------------------------|---------------|-----------------|---------------|--------------------|--------------|
| | With Hardware | W/O Hardware | With Hardware | W/O Hardware | | | | |
| 9 | MDM98479-86 | MDM98479-18 | MDM98479-78 | MDM-97294-371 | 320-9505-014** | .785 (19.94) | .565 (14.35) | .308 (7.82) |
| 15 | MDM98479-87 | MDM98479-19 | MDM98479-79 | MDM-97294-372 | 320-9505-014** | .935 (23.75) | .715 (18.16) | .308 (7.82) |
| 21 | MDM98479-88 | MDM98479-20 | MDM98479-80 | MDM-97294-373 | 320-9505-014** | 1.085 (27.56) | .865 (21.97) | .308 (7.82) |
| 25 | MDM98479-89 | MDM98479-21 | MDM98479-81 | MDM-97294-374 | 320-9505-014** | 1.185 (30.10) | .965 (24.51) | .308 (7.82) |
| 31 | MDM98479-90 | MDM98479-14 | MDM98479-82 | MDM-97294-375 | 320-9505-014** | 1.335 (33.91) | 1.115 (28.32) | .308 (7.82) |
| 37 | MDM98479-91 | MDM98479-15 | MDM98479-83 | MDM-97294-376 | 320-9505-014** | 1.485 (37.72) | 1.265 (32.13) | .308 (7.82) |
| 51 | MDM98479-92 | MDM98479-16 | MDM98479-84 | MDM-97294-377 | 320-9505-014** | 1.435 (36.45) | 1.215 (30.86) | .351 (8.91) |
| 100 | MDM98479-93 | MDM98479-17 | MDM98479-85 | MDM-97294-717 | 320-9508-014*** | 2.170 (55.12) | 1.800 (45.72) | .394 (10.01) |

* Kit contains 2 jackpost/jackscrew bushings and 2 E-Rings.

** Size 9-51-#2-56 UNC-2B Thread

*** Size 100-#4-40 UNC-2B Thread

M83513/ 01 - H100 - ** ****

SERIES

- MDM - Metal Shell, Liquid Crystal Polymer (LCP)
- MDB - Diallyl Phthalate Insulator
- MDVB - Polyester Insulator
-

MIL-C-83513 SLASH SHEET

- | | |
|--|-----------------------|
| 01 - Plug, Connector, Solderpot | } Metal Shell |
| 02 - Receptacle, Connector, Solderpot | |
| 03 - Plug, Connector, Crimp Type | |
| 04 - Receptacle, Connector, Crimp Type | |
| 05 - Hardware Only \triangle | |
| 06 - Plug, Connector, Solderpot | } Plastic \triangle |
| 07 - Receptacle, Connector, Solderpot | |
| 08 - Plug, Connector, Crimp Type | |
| 09 - Receptacle, Connector, Crimp Type | |

INSERT ARRANGEMENT

| | <u>METAL SHELL</u> | <u>PLASTIC</u> |
|-----|--------------------|----------------|
| A - | 9 Contact | 9 Contact |
| B - | 15 Contact | 15 Contact |
| C - | 21 Contact | 21 Contact |
| D - | 25 Contact | 25 Contact |
| E - | 31 Contact | 31 Contact |
| F - | 37 Contact | 37 Contact |
| G - | 51 Contact | 51 Contact |
| H - | 100 Contact | \triangle |

WIRE TYPE

- No Number - For Solderpot
- 01 - 18" long, #26 AWG per MIL-W-22759/11-26-9 (all white)
 - 02 - 36" long, #26 AWG per MIL-W-22759/11-26-9 (all white)
 - 03 - 18" long, #26 AWG per MIL-W-22759/11-26
Color Coded per MIL-STD-681, System 1, 10 colors repeating \triangle
 - 04 - 36" long, #26 AWG per MIL-W-22759/11-26-
Color Coded per MIL-STD-681, System 1, 10 colors repeating \triangle
 - 05 - .5" long, #25 AWG, type S per QQ-W-343,
Gold Plated
 - 06 - 1.0" long, #25 AWG, type S per QQ-W-343,
Gold Plated
 - 07 - .5" long, #25 AWG, type S per QQ-W-W-343,
Tin Plated
 - 08 - 1.0" long, #25 AWG, type S per QQ-W-343,
Tin Plated
 - 09 - 18" long, #26 AWG per MIL-W-22759/33-26-9 (all white) \triangle
 - 10 - 36" long, #26 AWG per MIL-W-22759/33-26-9 (all white) \triangle
 - 11 - 18" long, #26 AWG per MIL-W-22759/33-26
Color Coded per MIL-STD-681, System 1, 10 colors repeating \triangle \triangle
 - 12 - 36" long, #26 AWG per MIL-W-22759/33-26
Color Coded per MIL-STD-681, System 1, 10 colors repeating \triangle \triangle
 - 13 - 72" long, #26 AWG per MIL-W-22759/11-26-9 (all white) \triangle \triangle
 - 14 - 72" long, #26 AWG per MIL-W-22759/11-26
Color Coded per MIL-STD-681, System 1, 10 colors repeating \triangle
 - 15 - 72" long, #26 AWG per MIL-W-22759/33-26-9 (all white) \triangle
 - 16 - 72" long, #26 AWG per MIL-W-22759/33-26
Color Coded per MIL-STD-681, System 1, 10 colors repeating \triangle \triangle

NOTES:

- ¹ - For every Mil Spec Part Number, ITT has one corresponding part number shown an example
- \triangle - Tolerance on wire lengths: 18", 36" and 72" long – +1.00"/-0.00" .5" and 1.00" – +.200"/-.000"
- \triangle - For space application, connector shell finish must be "A174" and wire must be per MIL-W-22759/33-26.
- 4 - Any deviations to these P/N's will result in assignment of a special P/N, consult factory.
- \triangle - Size 100 not available in / 06 through / 09. (Plastic shell)
- \triangle - Color coding in accordance with MIL-STD-681, System 1, no parenthesis. See page 83 for color code chart.
- \triangle - For mounting hardware to Military Specification (sizes 9 to 100) see page 13.

SHELL FINISH

- No number - for plastic type connector
- C – for Cadmium/Yellow chromate over nickel
- N – A174 - Electroless Nickel A174 \triangle



M83513/ 10 - A ** C *

SERIES

Connector, Electrical, Rectangular
 Microminiature, Polarized Shell
 PC Board Mounting

MIL-C-83513 SLASH SHEET

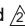
- 10 - Connector, Plug, Condensed Board Right Angle (CBR), Sizes 9 – 37
- 11 - Connector, Plug, CBR, Size 51
- 12 - Connector, Plug, CBR, Size 100
- 13 - Connector, Receptacle, CBR, Sizes 9 – 37
- 14 - Connector, Receptacle, CBR Size 51
- 15 - Connector, Receptacle, CBR, Size 100
- 16 - Connector, Plug, Board Right Angle (BR), Sizes 9 – 37
- 17 - Connector, Plug, BR, Size 51
- 18 - Connector, Plug, BR, Size 100
- 19 - Connector, Receptacle, BR, Sizes 9 – 37
- 20 - Connector, Receptacle, BR Size 51
- 21 - Connector, Receptacle, BR Size 100
- 22 - Connector, Plug, Board Straight (BS), Sizes 9 – 37
- 23 - Connector, Plug, BS, Size 51
- 24 - Connector, Plug, BS, Size 100
- 25 - Connector, Receptacle, BS, Sizes 9 – 37
- 26 - Connector, Receptacle, BS, Size 51
- 27 - Connector, Receptacle, BS Size 100

INSERT ARRANGEMENT



METAL SHELL

- A - 9 Contact
- B - 15 Contact
- C - 21 Contact
- D - 25 Contact
- E - 31 Contact
- F - 37 Contact
- G - 51 Contact
- H - 100 Contact



WIRE TYPE

- No Number - For Solderpot
- 01 - .109" long, #24 AWG solid copper wire per QQ-W-343, Type "S", solder dipped
- 02 - .140" long, #24 AWG solid copper wire per QQ-W-343, Type "S", solder dipped 
- 03 - .172" long, #24 AWG solid copper wire per QQ-W-343, Type "S", solder dipped

NOTES:

- 1 - For every Mil Spec Part Number, ITT has one corresponding part number
-  - Tolerance on wire lengths ±.015
-  - For space application, connector shell finish must be "N".
- 4 - Any deviations to these P/N's will result in assignment of a special P/N, consult customer service.

SHELL FINISH

- No letter - for plastic type connector
- C - Cadmium / Yellow chromate over nickel
- N - Electroless Nickel  

HARDWARE

- N - No jackpost
- P - Jackpost (permanently attached)
- T - Threaded insert

X-ON Electronics

Largest Supplier of Electrical and Electronic Components

Click to view similar products for [Ribbon Cables / IDC Cables](#) category:

Click to view products by [ITT](#) manufacturer:

Other Similar products are found below :

[FSK-12A Ribbon Cable, 6 Pin, 500mm](#) [AWG28-10G EHV3C EHV4C EHV5C](#) [cab-LVDV-PWR-10-15 FSP-25A Ribbon Cable, 4 Pin, 350mm](#)
[Ribbon Cable, 6 Pin, 300mm](#) [cab-LVDV-DAT-34-15](#) [49635-C62-S2](#) [1-3636-600-5204](#) [92315-1408](#) [100063-0094](#) [100063-0106](#) [100063-0102](#)
[100063-0104](#) [MMSD-02-20C-F-15.00-S-K](#) [100063-0099](#) [100063-0105](#) [100063-0095](#) [100063-0103](#) [100063-0093](#) [100063-0091](#) [2200000068](#)
[100063-0092](#) [100063-0101](#) [100063-0100](#) [100063-0097](#) [TFSDT-08-28-H-15.00-S](#) [S1SD-02-30-GF-09.00-L](#) [MMSD-02-22C-F-15.00-S-K](#)
[S1SS-02-28C-GF-02.00-L](#) [S1SDT-02-28-GF-03.00-L](#) [2-1589735-3](#) [JSM015PP2DCC23N](#) [92301-0283](#) [TCSD-22-D-26.00-01](#) [S1SST-07-30-](#)
[GF-06.00-L](#) [T2SD-20-24-L-07.87-TR-NUS](#) [DS1057-01-44A282R-30.5](#) [FFSD-06-S-17.00-01-N](#) [IDSS-03-D-20.00-T](#) [TCMD-17-S-36.00-01-](#)
[SR](#) [92301-0718](#) [839023](#) [490107670612S](#) [MMSDT-06-20-S-05.5-D-K-LDX](#) [IDD-04-G](#)