

Series 034

SUB-MINIATURE T-05 SPACE SAVER

This sub-miniature pushbutton switch offers high quality and reliability in a very small package. With gold contacts, this switch offers up to 1,000,000 cycles. This switch is ideal for applications where PC board space is at a premium.

APPLICATIONS

- Reset switch
- Detect switch

KEY FEATURES:

- Momentary action
- Gold contacts
- PC terminals
- SPST-NO (Form A) circuitry
- Variety of actuator lengths
- Up to 1,000,000 mechanical actuations



ACTUAL SIZE

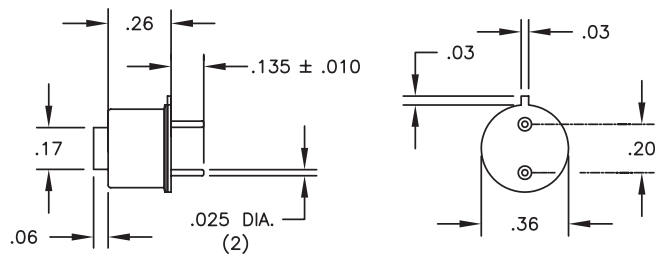
ORDERING INFORMATION:

Part Number	Button Height
034-550-001	0.06
034-550-002	0.50
034-550-005	0.15
034-550-006	0.25
034-550-010	0.37
034-550-015	0.19

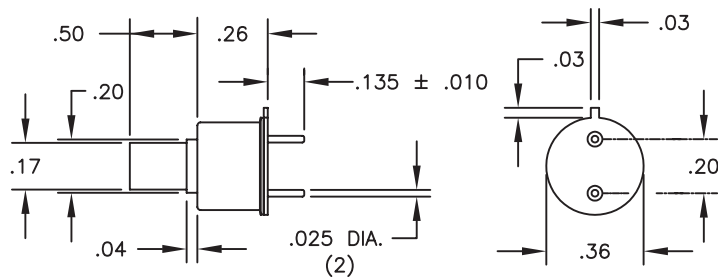
STANDARDS / AGENCY / RATINGS:



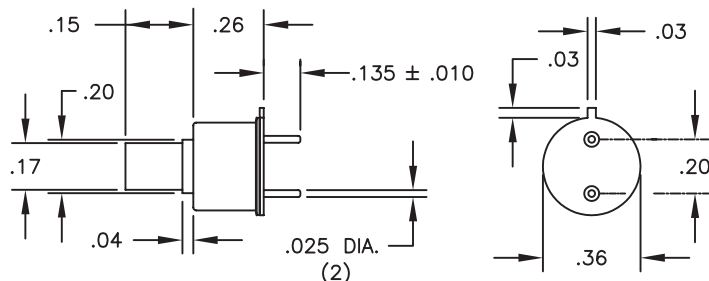
034-550-001



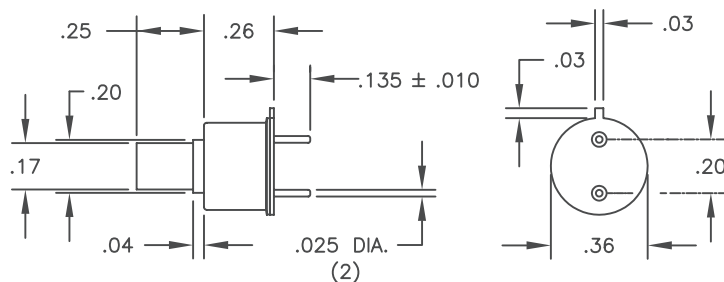
034-550-002



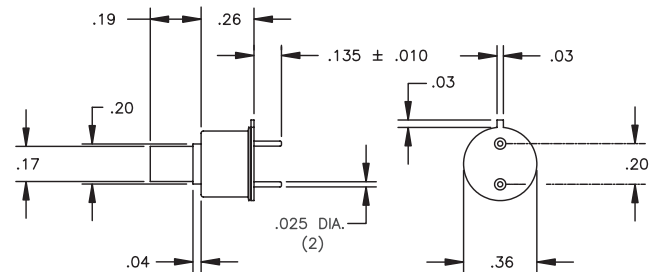
034-550-005



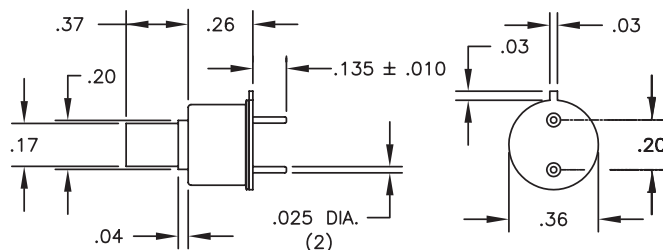
034-550-006



034-550-015



034-550-010



MECHANICAL / ELECTRICAL CHARACTERISTICS:

Circuit:

SPST-NO (Form A) Momentary

Temperature rating:

-30°C to +65°C
(-22°F to +149°F)

Life (mechanical):

1,000,000 actuations

Contact rating:

100 mA @ 125 VAC

Actuator:

thermoplastic (PBTP)

Can:

Nickel-silver

Contacts & terminals:

gold over nickel plate

X-ON Electronics

Largest Supplier of Electrical and Electronic Components

Click to view similar products for [Rotary Switches](#) category:

Click to view products by [ITW Switches](#) manufacturer:

Other Similar products are found below :

[57HS22-02-2-06N](#) [57M22-02B16N](#) [57M22-09A16N](#) [M3786/4-0881](#) [M3786/4-3267](#) [M3786/4-5568](#) [M3786/4-6029](#) [71ESF30-05204N](#)
[MC06L1NCGF](#) [84986-26](#) [9003K2C003GA](#) [PLR3251](#) [PLR3262](#) [PS3](#) [A0142M2SP](#) [A019605](#) [A029303](#) [R2AA4455NNNN](#)
[R2BB4455NNNN](#) [DR75-AMSF-10R-B](#) [14-520.0360](#) [1703.3201](#) [HW1MS-0202-101](#) [24002-03S](#) [A029101](#) [ACSNO-129-YB-C1014](#) [ACSNO-](#)
[134-RR-YB-C1005](#) [ACSNO-353-SB-C3016](#) [1825537-4](#) [T505](#) [T505E](#) [24005-03N](#) [H10207RR01Q](#) [M3786/4-0002](#) [M3786/4-0630](#) [M3786/4-](#)
[1028L](#) [M3786/4-1233L](#) [M3786/4-3044](#) [M3786/4-3129](#) [M3786/4-5008L](#) [M3786/4-5256](#) [MC6CX1A502X009](#) [42HS36-01-1-06N](#) [42P36-](#)
[03B10S](#) [44MBS60-04-2-03N](#) [44MG90-02-1-02N](#) [50KMT90-01-2-02N](#) [51A22-01-1-16S](#) [51CDP30-01PAJN](#) [51KSP30-01D04N](#)