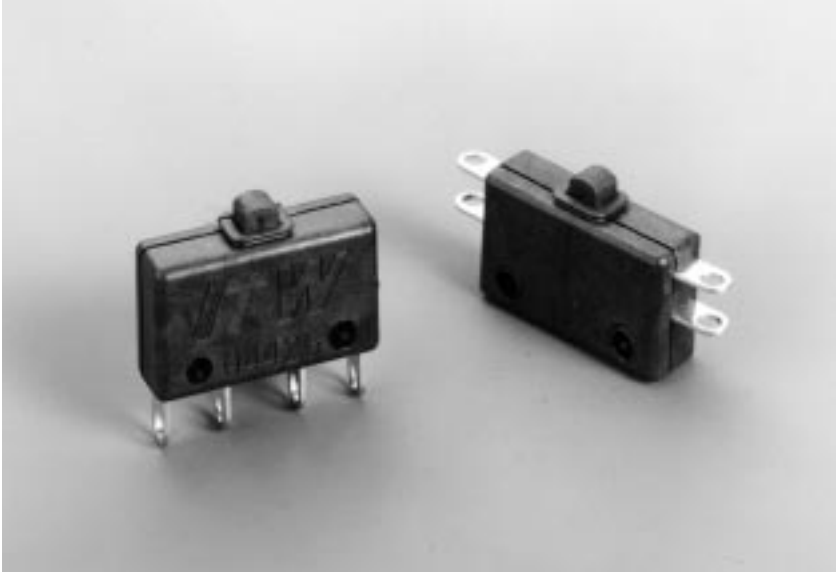


# KAP 16 – Sub-Miniature, 10.1 Amp

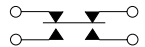


### Typical Applications

- Lift truck seat switch
- Aircraft contactors
- Basic switches for pushbutton switch assemblies
- Basic switches for thermal switching units
- Basic switches for specialty switch products
- Float switch for sump pumps
- Aircraft actuators
- Valve actuators



actual size



Form Z

### Features

- Features the Butterfly® double-break momentary mechanism
- Enhanced gold contacts for high or low power applications
- Variety of actuators available
- Meets MIL-S-8805/7 requirements
- Thermoplastic case sealed to prevent flux intrusion
- Greater overtravel than standard snap action switches
- Optional cover available for splash proof application
- Approvals: UL, CSA

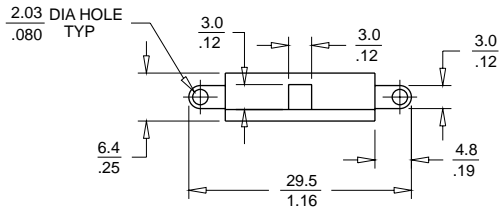
### Mechanical Characteristics

- Pretravel: .050 max
- Overtravel: .012 min
- Operating Force: 5 oz + 3 oz – 2 oz
- Release Force: 2 oz min
- Movement Differential: .020 ± .005
- Operating Point: .406 ± .010  
(from mounting hole centers)

### Electrical Ratings @ 28 VDC

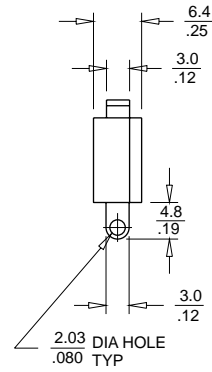
		Sea Level	70,000 Feet
Form Z	Res	10 A	10A
2 Circuit	Ind*	5 A	2A
	Lamp	3 A	-

\*L/R = .026



End Solder

millimeters  
inches



Bottom Solder

### Ordering Information

Part Number	Temperature Index	Contacts	Terminals
16-110	-85°F to +257°F	Enhanced Gold	End
16-111	-85°F to +257°F	Silver	End
16-410	-85°F to +257°F	Enhanced Gold	Bottom
16-411	-85°F to +257°F	Silver	Bottom

## X-ON Electronics

Largest Supplier of Electrical and Electronic Components

*Click to view similar products for [Basic / Snap Action Switches](#) category:*

*Click to view products by [ITW Switches](#) manufacturer:*

Other Similar products are found below :

[5SM901-S12](#) [5SM9-S12N195](#) [01.098.1358.1](#) [602EN532](#) [602EN535-RB](#) [602HE5-RB1](#) [604HE162](#) [604HE223-6B](#) [624HE17-RB](#) [6HM82](#)  
[6HM89](#) [6SE1](#) [6SX1-H58](#) [70500216](#) [70599106](#) [MBD5B1](#) [MBH2731](#) [73-316-0012](#) [EXD-AR20](#) [79211923](#) [79218589](#) [7AS12](#)  
[MIL30126AB6BBMD4A12XAU](#) [ML-1155](#) [ML-1376](#) [831010C3.0](#) [831090C2.EL](#) [83131904](#) [84212012](#) [8AS239](#) [8HM73-3](#) [8SX26-H33](#)  
[914CE1-6G](#) [PL-100](#) [11SM1077-H4](#) [11SM1077-H58](#) [11SM1-TN107](#) [11SM405](#) [11SM8423-H2](#) [11SX37-T](#) [11SX48-H58](#) [11SM2442-T](#)  
[11SM76-T](#) [11SM77-H58](#) [11SM77-T](#) [11SM863-T](#) [11SM866](#) [A7CN-1M-1-LEFT](#) [A831700C7.0](#) [121EN187-R](#)