

Series SE1022

DOUBLE POLE LINE VOLTAGE SELECTOR SWITCHES

This rugged fully enclosed housing is built for tough applications. The positive detect action, status indication and variety of contact configurations make this series ideal for a variety of needs.

APPLICATIONS

- Consumer power supplies
- Lower cost dual use power supplies

KEY FEATURES:

- Status indication: variety of markings available
- Variety of terminal styles
- Electrical life: 10,000 cycles
- UL recognized and CSA certified and VDE approved
- Variety of mounting styles
- Silver plated contacts



ACTUAL SIZE

ORDERING INFORMATION:

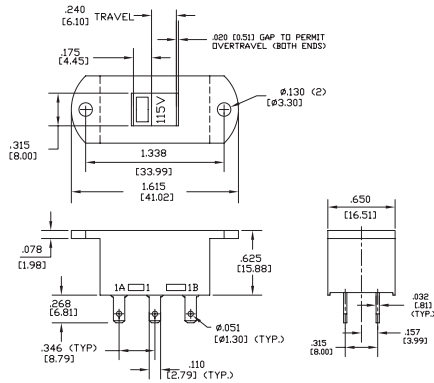
Part Number	Terminals	Dimensions	Marking
18-000-0016	.110 quick connect	1.615 L x .650 W x .625 H	230V/115V
18-000-0019	Right angle	1.030 L x .650 W x .625 H	230V/115V
18-000-0022	PC	1.030 L x .650 W x .625 H	230V/115V
18-000-0040	.110 quick connect	Snap in: .677 x 1.240 Cut out *	230V/115V

* It is recommended that panel thickness range from .015 to .125" (.038 to 3.18 mm) with switch cut-out punched from front of panel.

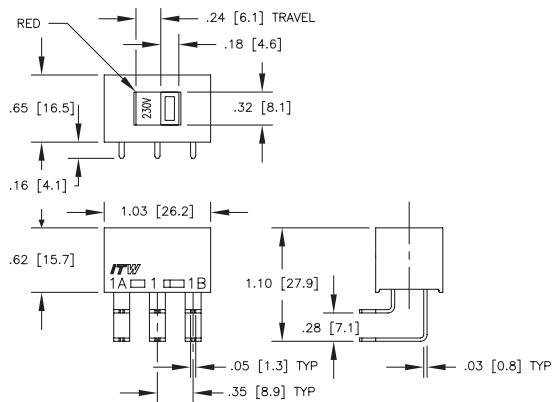
STANDARDS / AGENCY / RATINGS:



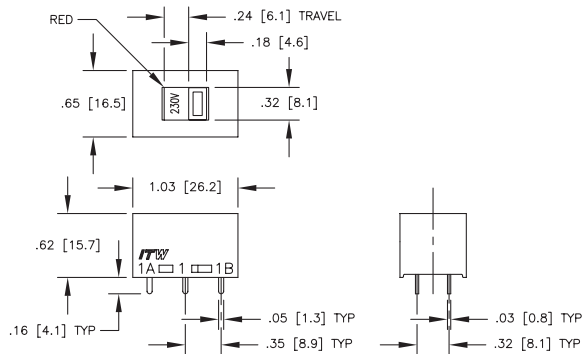
18-000-0016



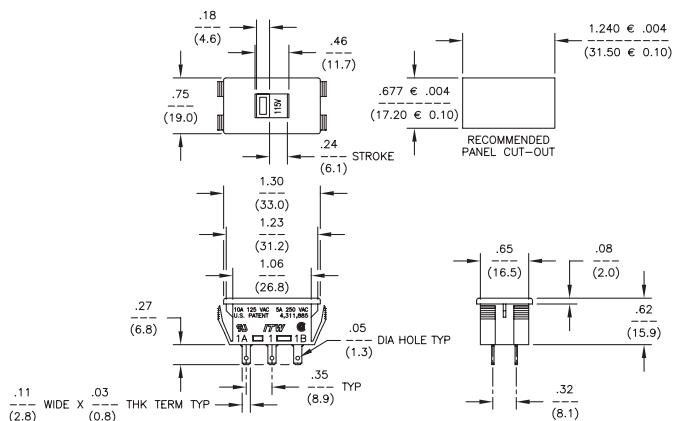
18-000-0019



18-000-0022



18-000-0040



MECHANICAL / ELECTRICAL CHARACTERISTICS:

Circuit:
DPDT (Form CC)

Electrical life:
10,000 cycles

Housing/actuator:
Nylon 94 V0

Terminal base:
phenolic laminate

Terminals:
silver plated copper

Electrical ratings:

Circuitry	Current	Voltage
DPDT*	10 Amp	125 VAC
DPDT*	5 Amp	250 VAC
DPDT**	10 Amp	125 VAC-T85
DPDT**	5 Amp	250 VAC-T85

* UL and CSA recognized
** VDC recognized

X-ON Electronics

Largest Supplier of Electrical and Electronic Components

Click to view similar products for [Slide Switches](#) category:

Click to view products by [ITW Switches](#) manufacturer:

Other Similar products are found below :

[6-1437581-1](#) [M43R](#) [MHS123K15D](#) [MHS133K](#) [MHSS1104A](#) [MMD](#) [GH49S010001](#) [MSS12A](#) [EPS1PC1](#) [1825074-1](#) [1825160-3](#) [1825167-2](#)
[1825289-7](#) [K232CB](#) [25139NLDB](#) [25449NAH](#) [SLB1240R45](#) [1825078-1](#) [1825080-4](#) [1825269-1](#) [1825270-2](#) [STS141RA04](#) [T2215BEN506](#)
[GH46P000001](#) [GH46W000001](#) [GH49P010001](#) [25339NA](#) [M42A](#) [TG36P000000](#) [TG36P000050](#) [AYZ0202AG](#) [47227LFE](#) [49331L](#) [50208L](#)
[L203091MS02Q](#) [4-1437581-7](#) [X2225CR-437W](#) [49329L](#) [1101M1S3ZB8E2](#) [1-1437581-1](#) [MSS2225G04](#) [TG39W000000](#) [1825075-1](#)
[MSS42G](#) [TG36WS80065](#) [T105S1CWZBE](#) [SLB124145](#) [SLB1280R5](#) [SLB1340R45](#) [25136NLDB](#)