

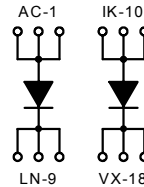
Fast Recovery Epitaxial Diode (FRED)

$I_{FAVM} = 2x147 \text{ A}$
 $V_{RRM} = 600 \text{ V}$
 $t_{rr} = 35 \text{ ns}$

ECO-PAC 2

Preliminary Data Sheet

V_{RSM}	V_{RRM}	Typ
V	V	
600	600	DSEI 2x161-06P



Symbol	Conditions	Maximum Ratings	
I_{FRMS}	$T_{VJ} = T_{VJM}$	270	A
I_{FAVM}^*	$T_C = 70^\circ\text{C}$; rectangular; $d = 0.5$	147	A
I_{FSM}	$T_{VJ} = 45^\circ\text{C}$; $V_R = 0 \text{ V}$; $t = 10 \text{ ms}$ (50 Hz), sine	1200	A
	$t = 8.3 \text{ ms}$ (60 Hz), sine	1300	A
I^2dt	$T_{VJ} = 45^\circ\text{C}$; $V_R = 0 \text{ V}$; $t = 10 \text{ ms}$ (50 Hz), sine	7200	A^2s
	$t = 8.3 \text{ ms}$ (60 Hz), sine	7100	A^2s
I^2dt	$T_{VJ} = 125^\circ\text{C}$; $V_R = 0 \text{ V}$; $t = 10 \text{ ms}$ (50 Hz), sine	1080	A
	$t = 8.3 \text{ ms}$ (60 Hz), sine	1170	A
T_{VJ}		-40 ... +150	$^\circ\text{C}$
T_{VJM}		150	$^\circ\text{C}$
T_{stg}		-40 ... +125	$^\circ\text{C}$
V_{ISOL}	50/60 Hz, RMS	$t = 1 \text{ min}$	2500 V ~
	$I_{ISOL} \leq 1 \text{ mA}$	$t = 1 \text{ s}$	3600 V ~
M_d	Mounting torque (M4)		1.5-2.0 Nm
			14-18 lb.in.
Weight	typ.	20	g

Features

- 2 independent FRED in 1 package
- Isolation voltage 3600 V~
- Planar glass passivated chips
- Low forward voltage drop
- Leads suitable for PC board soldering
- Very short recovery time
- Soft recovery behaviour

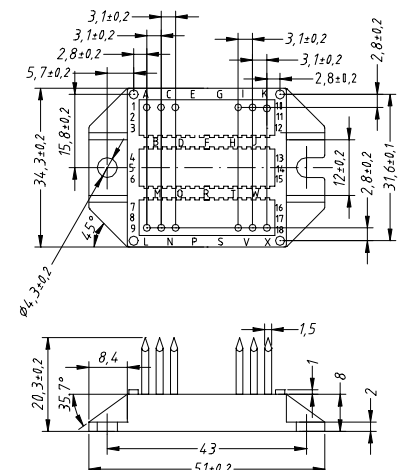
Applications

- Antiparallel diode for high frequency switching devices
- Anti saturation diode
- Snubber diode
- Free wheeling diode in converters and motor control circuits
- Rectifiers in switch mode power supplies (SMPS)
- Inductive heating and melting
- Uninterruptible power supplies (UPS)
- Ultrasonic cleaners and welders

Advantages

- Easy to mount with two screws
- Space and weight savings
- Improved temperature and power cycling
- Low noise switching
- Small and light weight

Dimensions in mm (1 mm = 0,0394")



Symbol	Conditions	Characteristic Values		
		min.	typ.	max.
I_R	$T_{VJ} = 25^\circ\text{C}$; $V_R = V_{RRM}$			12 mA
	$T_{VJ} = 25^\circ\text{C}$; $V_R = 0.8 \cdot V_{RRM}$			3 mA
	$T_{VJ} = 125^\circ\text{C}$; $V_R = 0.8 \cdot V_{RRM}$			80 mA
V_F	$I_T = 200 \text{ A}$; $T_{VJ} = 25^\circ\text{C}$			1.45 V
V_{TO}	For power-loss calculations only			0.85 V
r_T				2.7 m Ω
R_{thJC}	per Diode			0.29 K/W
R_{thCH}	per Diode	0.2		K/W
I_{RM}	$I_F = 100 \text{ A}$; $-di_F/d_t = 200 \text{ A}/\mu\text{s}$; $V_R = 100 \text{ V}$ $L \leq 0.05 \text{ mH}$; $T_{VJ} = 100^\circ\text{C}$		45	A
t_{rr}	$I_F = 1 \text{ A}$; $-di_F/d_t = 400 \text{ A}/\mu\text{s}$; $V_R = 30 \text{ V}$; $T_{VJ} = 25^\circ\text{C}$		35	ns
d_s	Creeping distance on surface	11.2		mm
d_A	Creeping distance in air	11.2		mm
a	Max. allowable acceleration			50 m/s ²

* I_{FAVM} rating includes reverse blocking losses at T_{VJM} ; $V_R = 0.8 V_{RRM}$; $d = 0.5$
IXYS reserves the right to change limits, test conditions and dimensions.

X-ON Electronics

Largest Supplier of Electrical and Electronic Components

Click to view similar products for [Rectifiers](#) category:

Click to view products by [IXYS](#) manufacturer:

Other Similar products are found below :

[70HFR40](#) [RL252-TP](#) [150KR30A](#) [1N5397](#) [NTE5841](#) [NTE6038](#) [SCF5000](#) [1N4002G](#) [1N4005-TR](#) [JANS1N6640US](#) [481235F](#)
[RRE02VS6SGTR](#) [067907F](#) [MS306](#) [70HF40](#) [T85HFL60S02](#) [US2JFL-TP](#) [A1N5404G-G](#) [ACGRA4007-HF](#) [ACGRB207-HF](#)
[CLH03\(Te16L,Q\)](#) [ACGRC307-HF](#) [ACEFC304-HF](#) [NTE6356](#) [NTE6359](#) [NTE6002](#) [NTE6023](#) [NTE6039](#) [NTE6077](#) [85HFR60](#) [40HFR60](#)
[VS-88-7272PBF](#) [70HF120](#) [85HFR80](#) [D126A45C](#) [SCF7500](#) [D251N08B](#) [SCHJ22.5K](#) [SM100](#) [SCPA2](#) [SCH10000](#) [SDHD5K](#) [VS-](#)
[12FL100S10](#) [ACGRA4001-HF](#) [D1821SH45T PR](#) [D1251S45T](#) [NTE5990](#) [NTE6358](#) [NTE6162](#) [NTE5850](#)