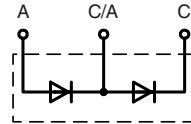
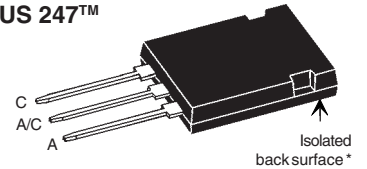


Power Schottky Rectifier dual diode

$I_{FAV} = 2 \times 35 \text{ A}$
 $V_{RRM} = 80 \text{ V}$
 $V_F = 0.68 \text{ V}$

V_{RSM}	V_{RRM}	Type
V	V	
80	80	DSSS 35-008AR


ISOPLUS 247™


C = Cathode, A = Anode

Symbol	Conditions	Maximum Ratings	
I_{FRMS}		70	A
I_{FAV}	$T_C = 150^\circ\text{C}$; rectangular, $d = 0.5$	35	A
I_{FAV}	$T_C = 150^\circ\text{C}$; rectangular, $d = 0.5$; per device	70	A
I_{FSM}	$T_{VJ} = 45^\circ\text{C}$; $t_p = 10 \text{ ms}$ (50 Hz), sine	600	A
E_{AS}	$I_{AS} = 35 \text{ A}$; $L = 100 \mu\text{H}$; $T_{VJ} = 25^\circ\text{C}$; non repetitive	60	mJ
I_{AR}	$V_A = 1.5 \cdot V_{RRM}$ typ.; $f = 10 \text{ kHz}$; repetitive	2	A
$(dv/dt)_{cr}$		5000	V/ μs
T_{VJ}		-55...+175	$^\circ\text{C}$
T_{VJM}		175	$^\circ\text{C}$
T_{stg}		-55...+150	$^\circ\text{C}$
P_{tot}	$T_C = 25^\circ\text{C}$	190	W
F_C	mounting force with clip	20...120	N
V_{ISOL}	50/60 Hz, RMS, $t = 1 \text{ s}$, leads-to-tab	3000	V~
Weight	typical	6	g

Features

- International standard package
- Very low V_F
- Extremely low switching losses
- Low I_{RM} -values
- Isolated and UL registered E153432

Applications

- Rectifiers in switch mode power supplies (SMPS)
- Free wheeling diode in low voltage converters

Advantages

- High reliability circuit operation
- Low voltage peaks for reduced protection circuits
- Low noise switching
- Low losses

Dimensions see Outlines.pdf

Symbol	Conditions	Characteristic Values	
		typ.	max.
I_R ①	$T_{VJ} = 25^\circ\text{C}$ $V_R = V_{RRM}$		4 mA
	$T_{VJ} = 125^\circ\text{C}$ $V_R = V_{RRM}$		10 mA
V_F	$I_F = 35 \text{ A}$; $T_{VJ} = 125^\circ\text{C}$		0.68 V
	$I_F = 35 \text{ A}$; $T_{VJ} = 25^\circ\text{C}$		0.79 V
	$I_F = 70 \text{ A}$; $T_{VJ} = 125^\circ\text{C}$		0.86 V
R_{thJC}			0.8 K/W
R_{thCH}	0.25		K/W

Pulse test: ① Pulse Width = 5 ms, Duty Cycle < 2.0 %
 Data according to IEC 60747 and per diode unless otherwise specified

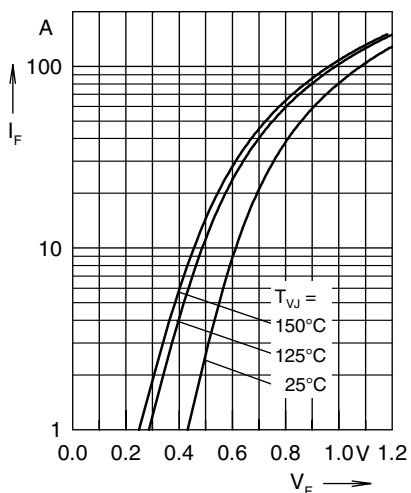


Fig. 1 Max. forward voltage drop characteristics

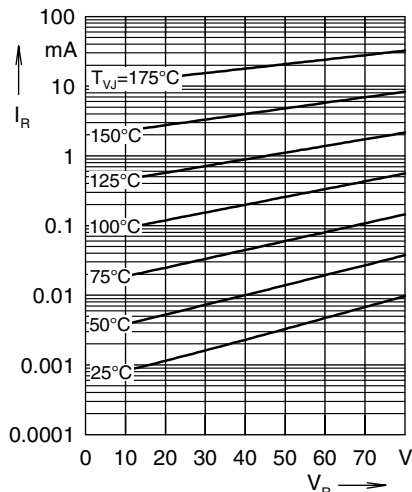


Fig. 2 Typ. reverse current I_R versus reverse voltage

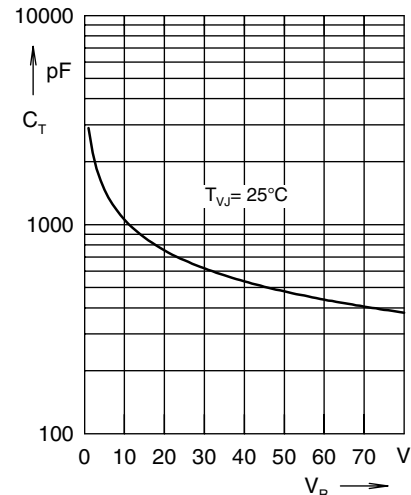


Fig. 3 Typ. junction capacitance C_T vs. reverse voltage V_R

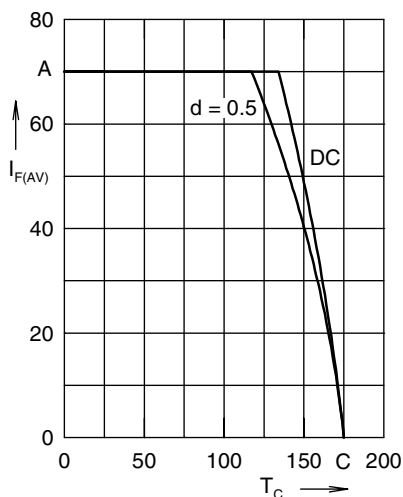


Fig. 4 Avg. forward current $I_{F(AV)}$ vs. case temperature T_C

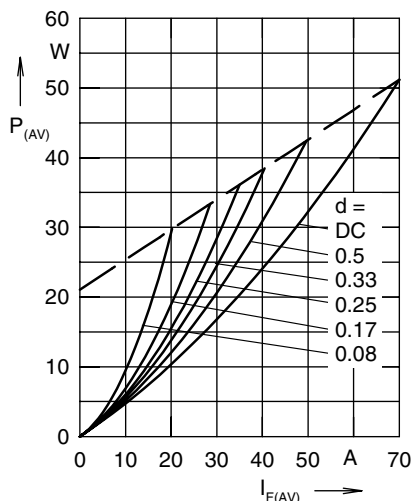


Fig. 5 Forward power loss characteristics

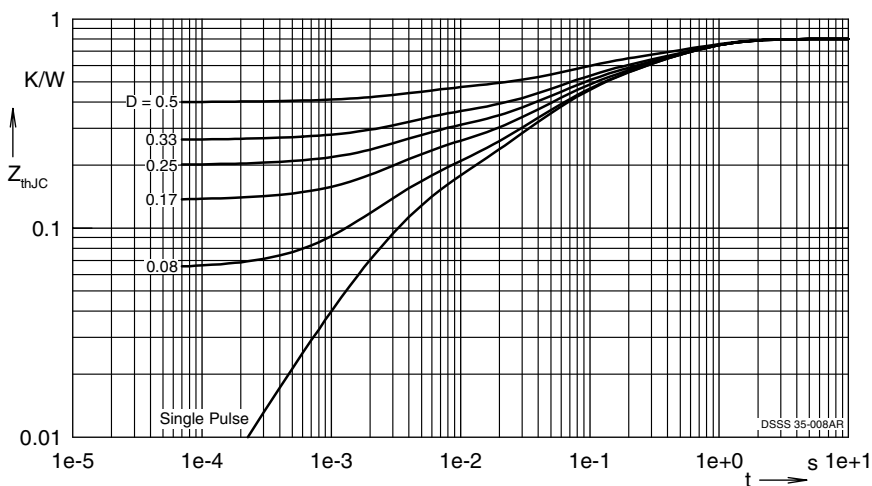


Fig. 6 Transient thermal impedance junction to case at various duty cycles

Note: All curves are per diode

X-ON Electronics

Largest Supplier of Electrical and Electronic Components

Click to view similar products for [Schottky Diodes & Rectifiers](#) category:

Click to view products by [IXYS](#) manufacturer:

Other Similar products are found below :

[MA4E2039](#) [D1FH3-5063](#) [MBR10100CT-BP](#) [MBR1545CT](#) [MMBD301M3T5G](#) [RB160M-50TR](#) [RB551V-30](#) [BAS16E6433HTMA1](#) [BAT](#)
[54-02LRH E6327](#) [NSR05F40QNXT5G](#) [NTE555](#) [JANS1N6640](#) [SB07-03C-TB-H](#) [SB1003M3-TL-W](#) [SK310-T](#) [SK32A-LTP](#) [SK34B-TP](#)
[SS3003CH-TL-E](#) [GA01SHT18](#) [CRS10I30A\(TE85L,QM](#) [MA4E2501L-1290](#) [MBRB30H30CT-1G](#) [SB007-03C-TB-E](#) [SK32A-TP](#) [SK33B-TP](#)
[SK38B-TP](#) [NRVBM120LT1G](#) [NTE505](#) [NTSB30U100CT-1G](#) [SS15E-TP](#) [VS-6CWQ10FNHM3](#) [ACDBA1100LR-HF](#) [ACDBA1200-HF](#)
[ACDBA140-HF](#) [ACDBA2100-HF](#) [ACDBA3100-HF](#) [CDBQC0530L-HF](#) [CDBQC0240LR-HF](#) [ACDBA260LR-HF](#) [ACDBA1100-HF](#)
[SK310B-TP](#) [MA4E2502L-1246](#) [MA4E2502H-1246](#) [NRVBM120ET1G](#) [NSR01L30MXT5G](#) [NTE573](#) [NTE6081](#) [SB560](#) [PMAD1108-LF](#)
[SD103ATW-TP](#)