

NEW

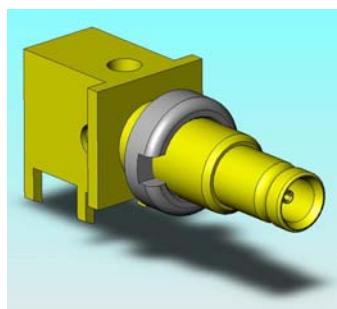
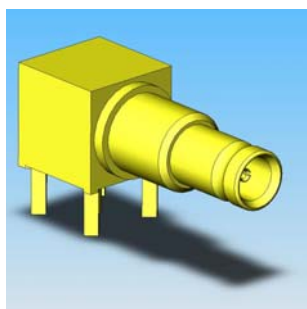

IEC60169-29(Type 0.1/2.3) Standard Compatible Coaxial Connector

CONNECTOR

MB-0132-3

CB1 Series

November 2006



RoHS Compliant

Board side receptacle

Cable side plug (mass production under study)

The CB1 series are compact coaxial connectors compatible to IEC60169-29(type 1.0/2.3) standard for wireless communication devices and various radio frequency wave devices such as mobile phones, PHSs, wireless LAN base stations, access points, etc. CB1 series are space saving and are suitable for multiple use on devices as an I/O connector.

Existing Lineup

Receptacle(board side): Angle Bulk type(75 ohm type)

Mass production under study

Receptacle(board side): Angle type (75, 50 ohm type), Multiple pos. (multiple pin) type

Plug(cable side): Straight type, Angle type

Plug side mating style: Screw type, Snap on push pull type

**Items and cables that are not in the above are under consideration. Please contact us. **

Features

- Compact coaxial connector compatible to IEC60169-29(Type 0.1/2.3) standard
- Receptacle side angle type suitable for narrow-pitch multiple mounting because of small size --7mm x 7mm for occupied PCB dimension and 4.1mm dia. outer dimension at mating portion
- Low profile receptacle, 7.2mm height from PCB
- Screw lock mating is possible and the size is equivalent to Type SMB(IEC60169-10)
- Floating in axial direction with approximately 3mm mating stroke (effective length)
- Three types of lock mechanism is standardized for cable side, which are intermatable with this receptacle.
 - Screw type: outer diameter 6.5 mm max. extremely compact as a screw type
 - Snap-on, Push-Pull type: compatible to friction lock and complete lock
 - Slide in type: compatible to rack and panel type mating (without lock)
- 50 ohm and 75 ohm are standardized. Applicable frequency are as below
50 ohm: DC to 10GHz, 75 ohm: DC to 2GHz
- High environmental durability with surface finishes in gold plating
- Compliant to RoHS directive

Applications

Mobile phone base stations, PHS base stations, wireless LAN Access points, wireless communication devices, broadcasting devices, measuring devices, RFID(IC tag, automatic recognition) high frequency module, wireless power amplifiers, etc.

General Specifications

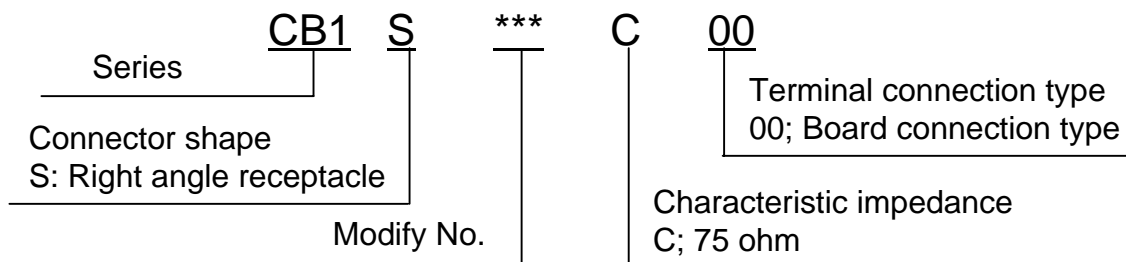
- Characteristic Impedance: 75 ohm
- Applicable frequency: DC to 2GHz
- V.S.W.R.: 1.2 max. (DC to 1GHz)
- Insertion loss 0.3dB (DC to 1GHz)
- Rated current: DC0.5A
- Rated voltage: AC250Vr.m.s.
- Operating temperature:
-40 deg. C to +85 deg. C
- Contact resistance:
Signal contact; 4m ohm max.
(after test: 10m ohm max.)
Grand contact; 2.5m ohm max.
(after test: 7.5m ohm max.)
- Dielectric withstanding voltage:
AC750Vr.m.s, per minute
- Insulation resistance: 1000M ohm min.(DC500V)

Materials/ Finishes

Part Number	CB1S001C00	CB1S002C00
Componets	Materials/ Finishes	Materials/ Finishes
Insulator	Ethlene tetrafloride	Ethlene tetrafloride
Single contact (inner conductor)	Copper alloy/ Au plating over Ni (0.5 um max.)	Copper alloy/ Au plating over Ni (0.5 um max.)
Earth contact (outer conductor)	Copper alloy/ Au plating over Ni (0.3 um max.)	Contact area: Copper alloy/ Au plating over Ni (0.3 um max.) Terminal area: Copper alloy/ Ni plating
Nut	-	Copper alloy/ Ni plating

Ordering Information

- Receptacle(board side)



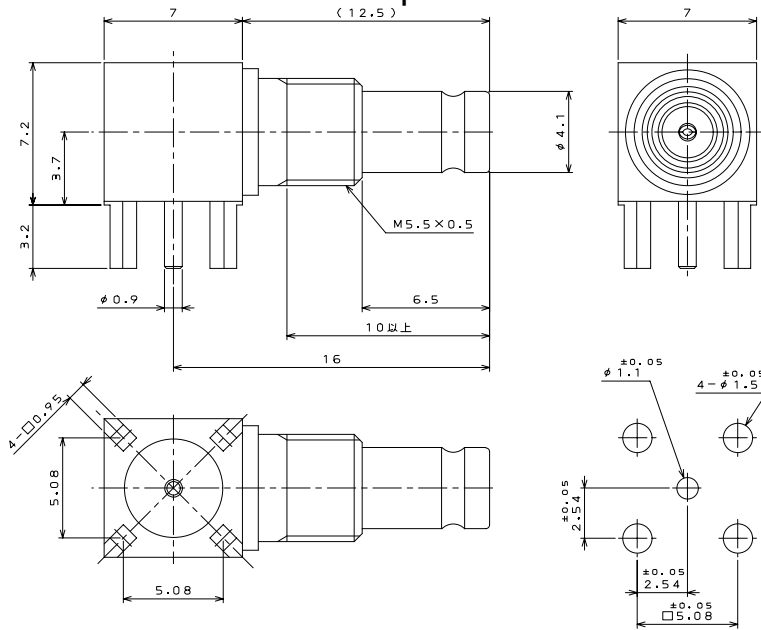
Technical Information

- Please contact us concerning item other than the following.
- Cable products are available in other various, connector types and cable types. Please consult us.

	Zo	Part Number	SJ Drawing	Specifications	Note
Receptacle connector	75 ohm	CB1S001C00	SJ102929	JACS-20052	Right angle type- mass production under study
		CB1S002C00	SJ106901		Right angle bulk type-started mass production
	50 ohm	Mass production(under study)			
Cable side plug connector and Harness assembly	Mass production(under study)				

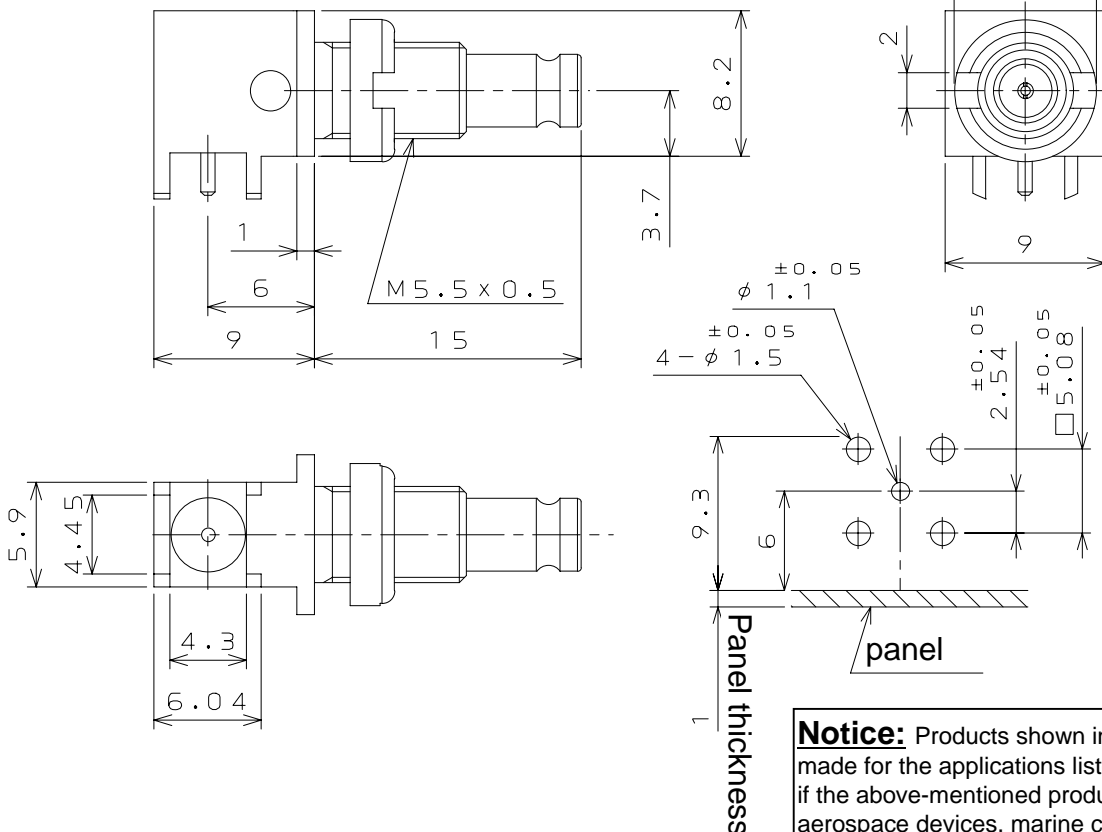
Dimensions and Shape

<CB1S001C00> -Mass production under study-



Applicable through hole dimensions

<CB1S002C00> -Started mass production-



Applicable through hole dimensions

Japan Aviation Electronics Industry, Limited

Product Marketing Division
 Aobadai Building, 3-1-19, Aobadai, Meguro-ku, Tokyo 153-8539
 Phone: +81-3-3780-2787 FAX: +81-3-3780-2946

Notice: Products shown in this leaflet are made for the applications listed below. However, if the above-mentioned products are to be used in aerospace devices, marine cable-connection devices, atomic power control systems, medical equipment for life-support systems, or any other specific application requiring extremely high reliability, please contact JAE for further information.
 Recommended applications: computers, office machines, measuring devices, telecommunication devices (terminals, mobile devices), AV devices, household applications, FA devices, etc.

X-ON Electronics

Largest Supplier of Electrical and Electronic Components

Click to view similar products for [RF Connectors](#) / [Coaxial Connectors](#) category:

Click to view products by [JAE](#) manufacturer:

Other Similar products are found below :

[8915-1511-000](#) [89674-0827](#) [6001-7071-019](#) [6002-7051-003](#) [6002-7551-202](#) [6059674-1](#) [619550-1](#) [630059-000](#) [M39030/3-01N](#) [6500-7071-046](#) [6769](#) [CX050L2AQ](#) [7002-1542-011](#) [7004-1512-000](#) [7009-1511-004](#) [7010-1511-000](#) [7029-1511-060](#) [7101-1541-010](#) [7101-1571-002](#) [7105-1521-002](#) [7145-1521-002](#) [7203-1571-003](#) [7209-1511-011](#) [7210-1511-015](#) [7210-1511-019](#) [73137-5015](#) [73216-2241](#) [7325-1512-000](#) [73404-2300](#) [7405-1521-005](#) [7405-1521-802](#) [7406-1521-005](#) [8527](#) [8547](#) [FS11V](#) [8808-1511-001](#) [9049-9513-000](#) [9074-9513-000](#) [9101-9573-002](#) [910A205F](#) [9130-9573-002](#) [PL11SC-026](#) [PL375-33](#) [PL40-5](#) [PL71-9](#) [PL74C-221](#) [PL75MC-217](#) [PL803-7](#) [980-8666-005](#) [1200690078](#)