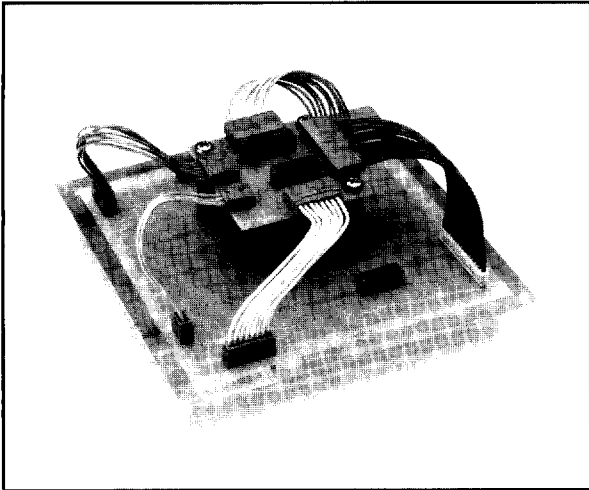


# IL-Y SERIES CONNECTORS

## 1.5mm (.059") Contact Spacing, PCB-to-Cable (Crimp Type) Connectors



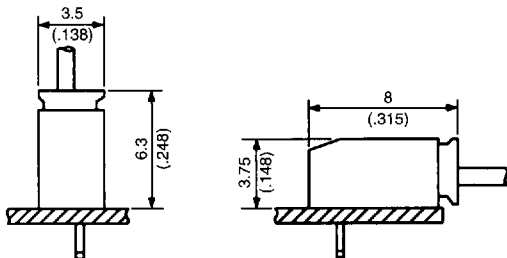
This low profile, board-to-cable connector series features 1.5mm (.059") contact spacing. The overall height of mated connectors is 6.3mm (.248") for vertical connection. Connector thickness is 3.5mm (.138"). The low profile design makes the IL-Y Series connectors ideal for use on high component-density electronic products.

Board-side pin headers and cable-side socket housings are available with 2 to 15 contacts. A semi-automatic crimping machine can make high volume socket contact termination simple and fast.

Applications include VCRs, TV sets, audio equipment, office automation equipment, computers, and test and measurement equipment.

### FEATURES

- Four-wall boxed pin header
- Pre-formed solder tails for board retention during soldering
- Highly reliable socket contact
- Easy lock-on mechanism
- Stepped socket housing enables easy unmating
- Anti-wicking feature



### GENERAL SPECIFICATIONS

Number of Contacts	2 to 15 contacts
Contact Spacing	1.5mm (.059"), single row
Current Rating	1 Amp
Operating Voltage	200 VAC, 200 VDC
Dielectric Withstanding Voltage	500 VAC r.m.s. (for one minute)
Insulation Resistance	100 megohms min.
Contact Resistance	20 milliohms max.
Operating Temperature	-40°C to +85°C
Applicable Wire Sizes	#26 to #30 AWG, stranded
Applicable PCB Thickness	0.8mm (.031") to 1.6mm (.063")

### MATERIALS AND FINISHES

Description	Materials/Finishes
Insulator	6-6 Nylon (UL94V-0, Light Brown)
Pin Contact	Brass/Tin Plating over Nickel
Socket Contact	Phosphor Bronze/Tin Plating

### ORDERING INFORMATION

	<b>IL-Y</b>	<b>**</b>	<b>*</b>	<b>*</b>	<b>15</b>	<b>*</b>	<b>*</b>	<b>-</b>	<b>E</b>	<b>F</b>
Series										
No. of Contacts	2 to 15									
Contact Type	P - Pin    S - Socket									
Contact Arrangement	S - Single Row									
Contact Spacing	15 - 1.5mm (.059")									
Termination	C - Crimp (Socket Housing) L - Right Angle Through Hole (Pin Header) T - Straight Through Hole (Pin Header)									
PCB Thickness/Wire Size	2 - 0.8mm (.031") to 1.6mm (.063") PCB Thickness (Pin Header) 3 - #26 AWG to #30 AWG Wire Size (Socket Housing)									
Tail Length (Pin Header)	E - 2.7mm (.106")									
Tail (Pin Header)	F - Formed									

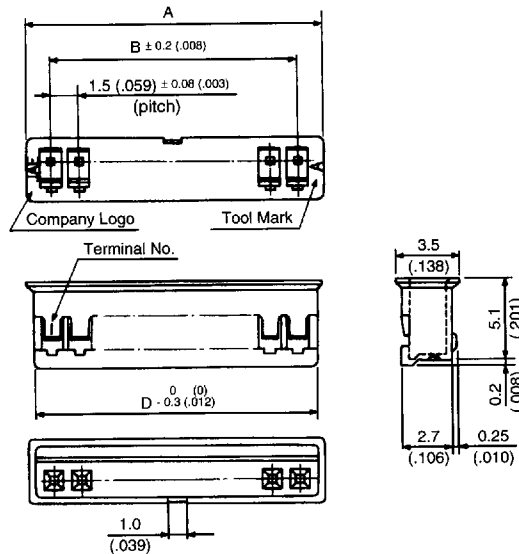
Dimensions and specifications subject to change without notice.



# IL-Y SERIES CONNECTORS

1.5mm (.059") Contact Spacing, PCB-to-Cable (Crimp Type) Connectors

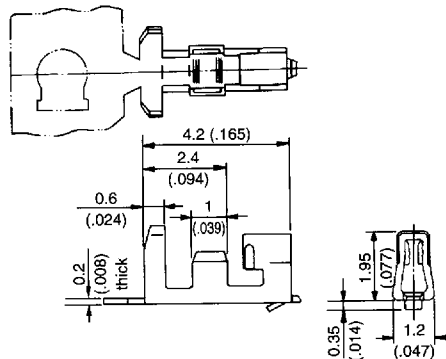
SOCKET HOUSING: IL-Y-\*\*\*S-S15C3



No. of Contacts	Part Number	A ± 0.1 (.004)	B ± 0.2 (.008)	D +0 (+0) -0.3 (-0.12)
2	IL-Y- 2S-S15C3	4.25 (.167)	1.5 (.059)	3.5 (.138)
3	IL-Y- 3S-S15C3	5.75 (.226)	3.0 (.118)	5.0 (.197)
4	IL-Y- 4S-S15C3	7.25 (.285)	4.5 (.177)	6.5 (.256)
5	IL-Y- 5S-S15C3	8.75 (.344)	6.0 (.236)	8.0 (.315)
6	IL-Y- 6S-S15C3	10.25 (.404)	7.5 (.295)	9.5 (.374)
7	IL-Y- 7S-S15C3	11.75 (.463)	9.0 (.354)	11.0 (.433)
8	IL-Y- 8S-S15C3	13.25 (.522)	10.5 (.413)	12.5 (.492)
9	IL-Y- 9S-S15C3	14.75 (.581)	12.0 (.472)	14.0 (.551)
10	IL-Y-10S-S15C3	16.25 (.640)	13.5 (.531)	15.5 (.610)
11	IL-Y-11S-S15C3	17.75 (.699)	15.0 (.591)	17.0 (.669)
12	IL-Y-12S-S15C3	19.25 (.758)	16.5 (.650)	18.5 (.728)
13	IL-Y-13S-S15C3	20.75 (.817)	18.0 (.709)	20.0 (.787)
14	IL-Y-14S-S15C3	22.25 (.876)	19.5 (.768)	21.5 (.846)
15	IL-Y-15S-S15C3	23.75 (.935)	21.0 (.827)	23.0 (.906)

## SOCKET CONTACT (CRIMP TYPE)

- **Part Number: IL-Y-C3-A-10000**  
10000 contacts per reel
- **Applicable wire sizes:**  
#26 to #30 AWG, stranded
- **Wire insulation dia.:**  
1.0mm (.039") to 0.7mm (.028")



## TOOLING

Semi-Automatic Crimping Machine:  
CT350-2B-ILY

Hand Crimping Tool:  
CT150-2-ILY  
CT150-4-ILY

Contact Insertion Tool:  
IT250-1-ILY

Contact Extraction Tool:  
ET-ILS-NO2

Dimensions in mm (inches).

D 05F ■ 4893465 0000707 273 ■

Hong Kong  
Tel: 852-2723-7782  
Fax: 852-2723-9028

Japan  
03-3780-2715  
03-3780-2883

Singapore  
65-748-1332  
65-748-2920

Taiwan  
02-555-9711  
02-556-5424

United Kingdom  
1276-21717  
1276-66165

United States  
714-753-2600  
714-753-2699



## X-ON Electronics

Largest Supplier of Electrical and Electronic Components

*Click to view similar products for [Crimpers / Crimping Tools](#) category:*

*Click to view products by [JAE](#) manufacturer:*

Other Similar products are found below :

[010-0096](#) [M225202-37](#) [6-1579015-5](#) [CT150-2-D02](#) [M322](#) [6-304052-1](#) [63456-0054](#) [63484-3701](#) [63800-8355](#) [63819-1875](#) [63819-2875](#)  
[63819-4475](#) [63823-3475](#) [63827-5375](#) [64001-0975](#) [64001-4175](#) [64005-0175](#) [662903-2](#) [690602-6](#) [7-1579001-9](#) [7-23471-1](#) [762637-1](#) [808714-](#)  
[1](#) [811242-5](#) [999-50-020083](#) [1-21002-3](#) [1-21002-7](#) [12085270](#) [1-21002-6](#) [1-21113-6](#) [1-22548-4](#) [125442-1](#) [DCE.91.073.BVC](#)  
[DCE.91.090.3MVM](#) [DCE.91.130.5MVU](#) [DCE.91.202.BVCM](#) [1338300-1](#) [1-354003-0](#) [1338301-1](#) [DF62/RE-MD](#) [142321](#) [1456088-1](#)  
[1490794-1](#) [1-45804-6](#) [1490357-2](#) [1490357-3](#) [AX100749](#) [1-59619-7](#) [1596970-1](#) [1-59619-8](#)