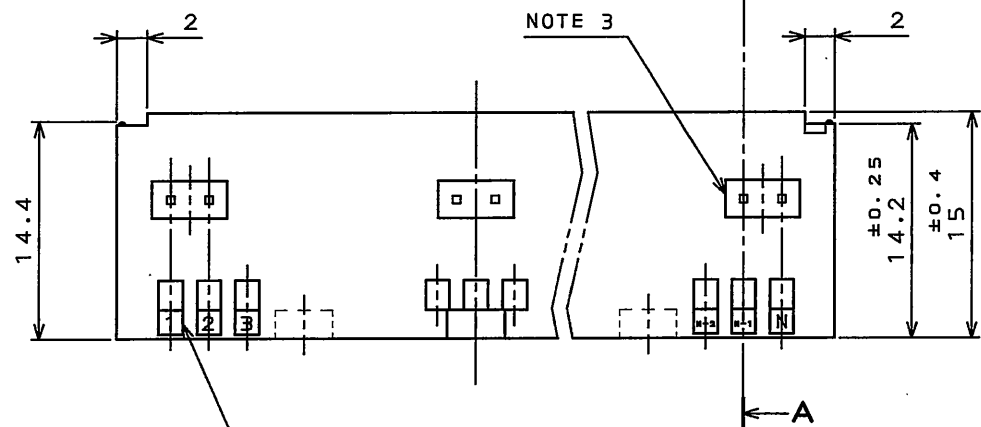
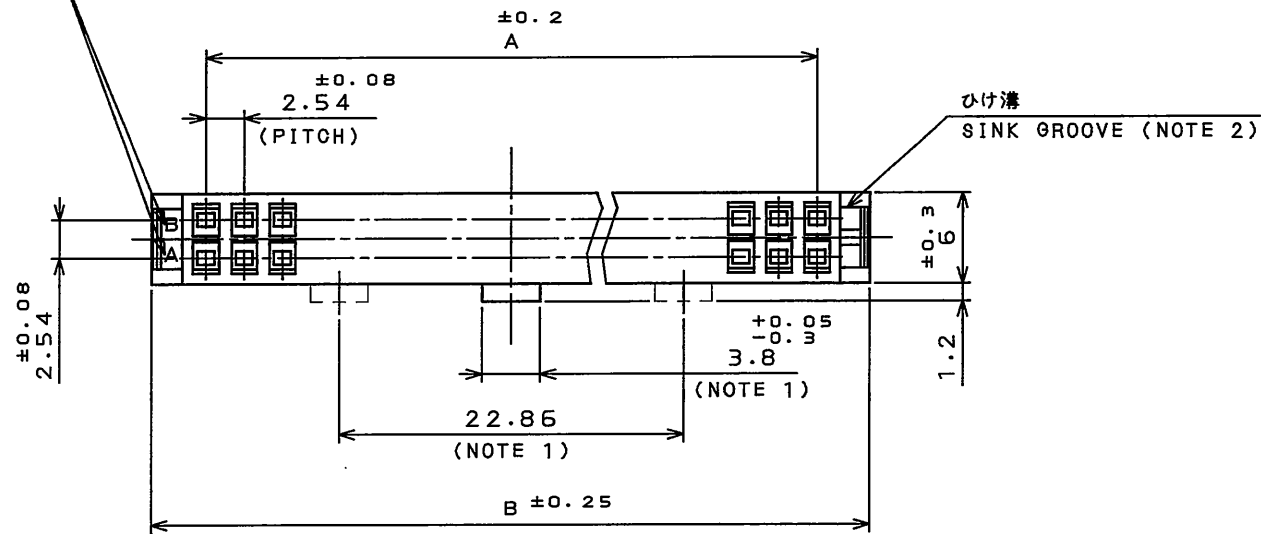


EE0Z10FS

(ON ΘNIMVHD) 台要図

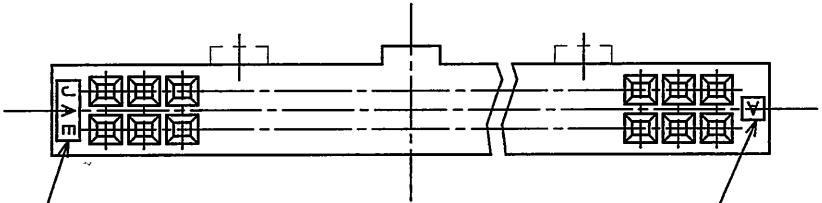
列番号A,Bを沈み彫り浮き出す

LINE A, B APPEARS IN RELIEF.



CONTACT POSITION NUMBER 1,2,3...N APPEARS IN RELIEF ON BOTH SIDES.

CONTACT POSITION NUMBER "N" MEANS HALF OF THE CONNECTOR TOTAL POSITIONS. AT SYMMETROCAL POLARIZING KEY, CONTACT POSITION NUMBERS UNAPPEAR.



社標 "JAE" を沈み彫り浮き出す

COMPANY LOGO "JAE" APPEARS IN RELIEF.

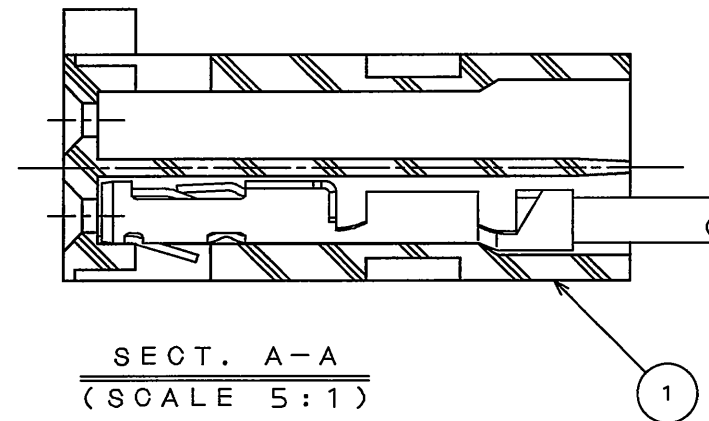
金型No.A,B,...を沈み彫り浮き出す

TOOLING NUMBER A,B... APPEARS IN RELIEF.

版数 REV.	年月日 DATE	DCN NO.	変更内容 DESCRIPTION	製図 DR.	担当 CHK.	査閲 APPD.	承認 APPD.
7	24.May.2010	069923	CHANGED BILINGUAL VERSION		N.UCHIYAMA		y. MiguSoma

TABLE 1. PART NO. AND DIMENSINS A,B
表-1.名称及び、寸法A,B

PART NO.	A ^{±0.2}	B ^{±0.25}
PS-D4C10	10.16	17.26
↑ ↑ 14	15.24	22.34
16	17.78	24.88
20	22.86	29.96
26	30.48	37.58
30	35.56	42.66
34	40.64	47.74
40	48.26	55.36
↓ ↓ 50	60.96	68.06
PS-D4C60	73.66	80.76



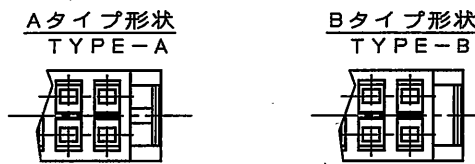
注1. 誤挿入防止溝を50,60芯はセンター振り分けにて22.86の間隔で2ヶ所、10芯はセンターに1ヶ所設ける。

2. 本品のひけ溝には下記に示す2種類の形状があります。(但し、本図面はAタイプで表しています。)

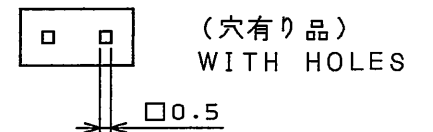
3. 本品にはフード取付用溝内に、穴有り、穴無しの2種類があります。

NOTE1. FOR 50-, AND 60-CONTACT CONNECTORS, TWO SYMMETRICAL POLARIZING KEYS BETWEEN WHICH DISTANCE IS 22.86 mm ARE PROVIDED. FOR 10-CONTACT CONNECTOR, ONE POLARIZING KEY IS PROVIDED AT THE CENTER OF THE CONNECTOR.

NOTE2. THE SINK GROOVE SHAPE OF THIS CONNECTOR HAS 2 TYPES. THIS DRAWING SHOWS "TYPE-A" FEATURE AS FOLLOWING.



NOTE3. INSIDE OF GROOVE SHAPES FOR MOUNTING HOOD HAS 2 DIFFERENT TYPES. (WITH HOLES / WITHOUT HOLES)



1	RECEPTACLE HOUSING	1	GLASS FILLED P.B.T.	NONE	UL94V-0 (COLOR:BLACK)
符号 NO.	名称 DESCRIPTION	個数 QTY.	材 料 MATERIAL	仕 上 FINISH	備 考 REMARKS
仕様書 (SPECIFICATION)	第1版 (ORIGINAL DATE)	尺 度 (SCALE)	シ リ ー ス (SERIES)	日本航空電子工業株式会社 JAPAN AVIATION ELECTRONICS INDUSTRY, LTD.	
JACS-1133	13.Apr.1981	2:1	PS		
一般差 (GENERAL TOLERANCE)	製 図 DR.	名 称 (TITLE)		図面番号 (DRAWING NO.) SJ017033	
寸法 (DIMENSION) 角度 (ANGLES)	担 当 CHK.	RECEPTACLE HOUSING			
. ±0.8 X° ±	査 閲 APPD.	質量 (MASS)			
.X ±0.4 X°X ±	承 認 APPD.	KATOU			
.XX ±0.1					
.XXX ±					

X-ON Electronics

Largest Supplier of Electrical and Electronic Components

Click to view similar products for [Headers & Wire Housings](#) category:

Click to view products by [JAE](#) manufacturer:

Other Similar products are found below :

[892-18-020-10-001101](#) [58102-G61-06LF](#) [582553-1](#) [0009485154](#) [009176003701906](#) [0050291907](#) [LY20-4P-DT1-P1E-BR](#) [02.125.8002.8](#)
[609-3404](#) [61062-3](#) [622-0430](#) [622-3653LF](#) [63453-116](#) [636-1030](#) [636-1427](#) [636-3427](#) [636-4007](#) [641938-9](#) [641991-4](#) [644827-2](#) [65817-010LF](#)
[65817-015LF](#) [65863-015LF](#) [66207-023LF](#) [67095-007LF](#) [67601157](#) [68648-049](#) [70.362.1628.0](#) [70-4210](#) [70-4226B](#) [70-4853B](#) [707-5020](#) [707-5028](#) [71.350.2428.0](#) [71918-208LF](#) [71961-016LF](#) [733-134](#) [733-162](#) [754199-000](#) [760-3052](#) [787-8014-00](#) [79531-3000](#) [FCN-360C032-B](#) [FCN-367T-T012/H](#) [FCN-723D010/2](#) [80.063.4001.1](#) [800-90-001-10-001000](#) [800-90-010-10-002000](#) [801-43-002-10-013000](#) [801-43-006-10-002000](#)