

# **JBC**

[www.jbctools.com](http://www.jbctools.com)

## **INSTRUCTION MANUAL**



### **DPM**

Manual Solder Paste Dispenser

This manual corresponds to the following reference:

**DPM-B**

## Packing List

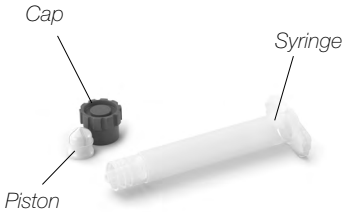
The following items are included:



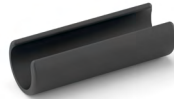
**Manual Solder Paste Dispenser ... 1 unit**



**5cc Syringe Barrel, Piston, Cap ... 2 units**  
Replacement Ref. SB05CC (5 units)



**3cc Syringe Barrel, Piston, Cap ... 2 units**  
Replacement Ref. SB03CC (5 units)



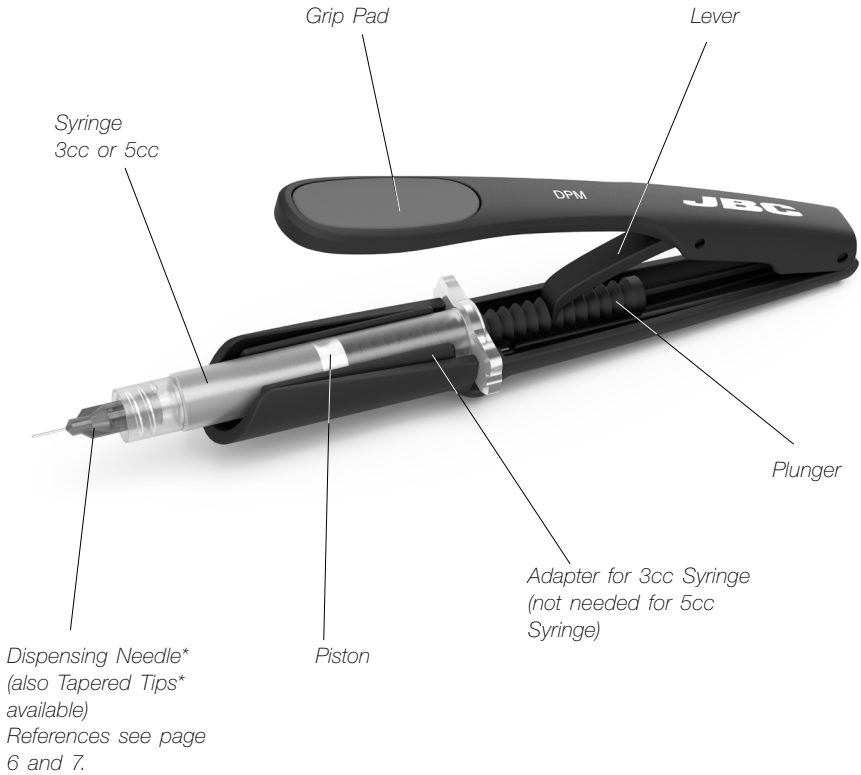
**Adapter for 3cc Syringe ..... 1 unit**



**Manual ..... 1 unit**  
Ref. 0027208

## Features

The DPM works with 3cc and 5cc Syringes.

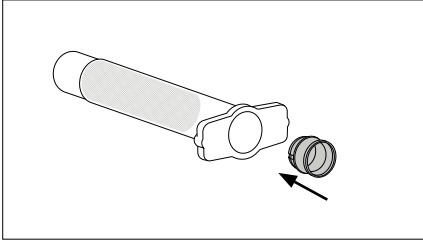


\* not included

# Operation

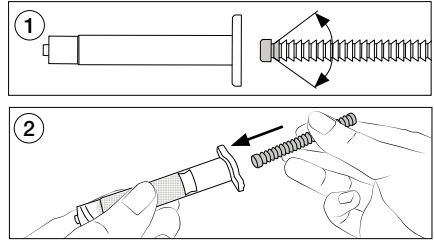
The DPM works with 3cc and 5cc Syringes. Ask your solder paste supplier for this format or fill the JBC syringe barrel with solder paste.

## 1. Piston Placement



Take the barrel filled with solder paste and place the corresponding piston into the barrel.

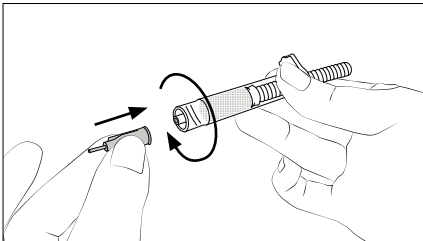
## 2. Plunger Placement



1. Pay attention to the fact that the plunger enters with its cylindrical part in the syringe and the direction of the teeth angle corresponds to the upper image. Otherwise, the DPM does not work properly.

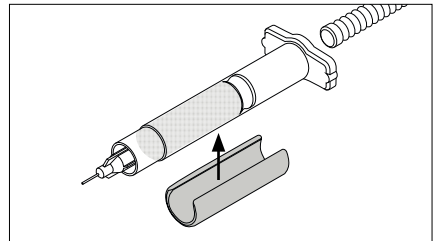
2. Insert the plunger into the piston and press the piston against the solder paste to eliminate the air inside the barrel.

## 3. Tip Placement



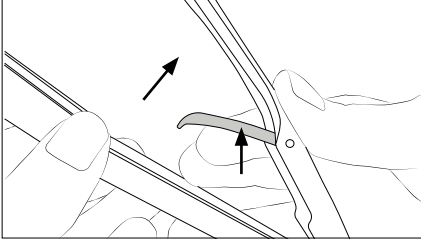
Thread the tip onto the syringe barrel.

## 4. Adapter Use (for 3cc Syringe only)



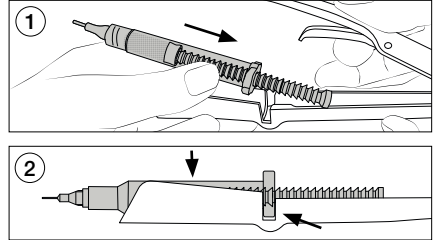
For 3cc syringes the adaptor is needed. Assemble the adaptor by clipping onto the barrel.

### 5. Lever Lifting



Open the DPM by lifting its upper part and the lever.

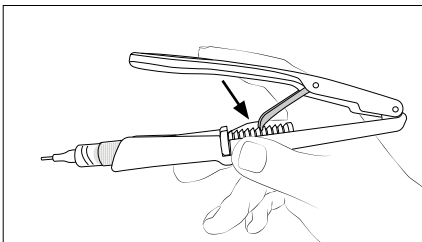
### 6. Syringe Insertion



1. Insert the prepared syringe, including the plunger, into the DPM.

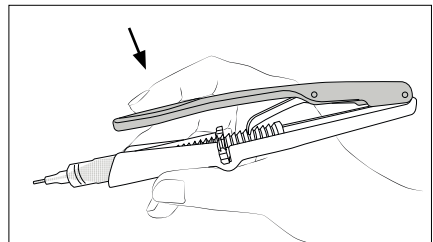
2. Push the syringe down until it snaps into place and the barrel flange rests in the opening.

### 7. Lever Positioning



Lower the lever until it fits in with the plunger.

### 8. Dispensing



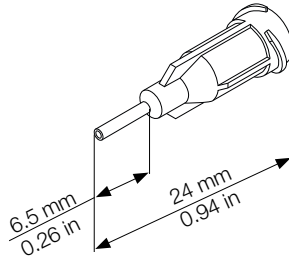
Press the DPMs upper part downwards until solder paste comes out.

**Note:** When the lever reaches the end of its stroke, the plunger is reloaded automatically by lifting and pressing down the DPMs upper part, the lever automatically jumps into the next plunger groove and the solder paste can be dispensed again.

## Dispensing Needles\* and Tapered Tips\*

JBC offers two different types of dispensing tips, each type with different tip diameters. Available at [www.jbctools.com](http://www.jbctools.com).

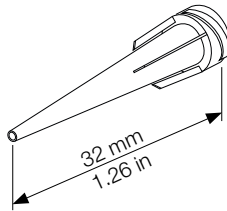
### Dispensing Needles with Stainless Steel Tips



STYLE	Ref.	COLOR	SOLDER PASTE (recomended)	GAUGE	ØID (mm/in)	ØOD (mm/in)	LENGTH (mm/in)	TOTAL LENGTH (mm/in)	QTY
Stainless Steel Needles	ND18S6	Green	Type 2	18	0.84/0.050	1.27/0.033	6.5/0.26	24/0.94	10
	ND20S6	Pink	Type 3	20	0.61/0.036	0.90/0.024			
	ND21S6	Purple	Type 3	21	0.51/0.032	0.82/0.020			
	ND22S6	Blue	Type 3	22	0.41/0.028	0.72/0.016			
	ND23S6	Orange	Type 3	23	0.31/0.025	0.63/0.013			
	ND25S6	Plan Red	Type 4	25	0.25/0.020	0.50/0.010			
	ND27S6	Clear	Type 5	27	0.2/0.016	0.40/0.008			
	ND30S6	Lavender	Type 6	30	0.15/0.012	0.31/0.006			

\* not included

**Tapered Tips**



STYLE	Ref.	COLOR	SOLDER PASTE (recomended)	GAUGE	ØID (mm/in)	ØOD (mm/in)	TOTAL LENGTH (mm/in)	QTY
Tapered Tips	ND18P	Green	Type 2	18	0.84/0.033	1.27/0.050	32/1.26	10
	ND20P	Pink	Type 3	20	0.64/0.024	1.20/0.048		
	ND22P	Blue	Type 3	22	0.41/0.016	0.72/0.028		
	ND25P	Red	Type 4	25	0.25/0.010	0.50/0.020		
	ND27P	Clear	Type 5	27	0.2/0.008	0.40/0.016		

# Specifications

## DPM

### Manual Solder Paste Dispenser

Ref.: **DPM-B**

- Dimensions/Net Weight: 130 x 66 x 16 mm / 0.05 kg  
(L x W x H) 5.12 x 2.60 x 0.63 in / 0.11 lb
- Package Dimensions/Weight: 155 x 55 x 45 mm / 0.074 kg  
(L x W x H) 6.10 x 2.17 x 1.77 in / 0.16 lb

Complies with CE standards  
ESD Safe

# JBC

## Warranty

JBC's 2 year warranty covers this equipment against all manufacturing defects, including the replacement of defective parts and labour.

Warranty does not cover product wear or misuse.

In order for the warranty to be valid, equipment must be returned, postage paid, to the dealer where it was purchased.



This product should not be thrown in the garbage.

In accordance with the European directive 2012/19/EU, electronic equipment at the end of its life must be collected and returned to an authorized recycling facility.



[www.jbctools.com](http://www.jbctools.com)



## **X-ON Electronics**

Largest Supplier of Electrical and Electronic Components

*Click to view similar products for JBC Tools manufacturer:*

Other Similar products are found below :

[DR560-A](#) [C245-766](#) [KNE-A](#) [T245-NA](#) [C420-275](#) [C105-211](#) [C245-201](#) [C245-260](#) [SHR2175](#) [TESE-2A](#) [JBC-TESE-2QA](#) [0201730](#) [AL-SD](#)  
[BE-SB](#) [C245-247](#) [C245-305](#) [C560-009](#) [NANE-2C](#) [NP115-A](#) [PHS-SA](#) [QSC-A](#) [PHSE-2KA](#) [C420-286](#) [C420-288](#) [C470-057](#) [FAE1-2A](#)  
[PHBE-2KA](#) [0551903](#) [HT470-A](#) [0650507](#) [FAE1-100](#) [CL7984](#) [FAE060](#) [FAE080](#) [ALE-210VA](#) [AT-SB](#) [DN-SF](#) [DR-SF](#) [DS-SF](#) [HDT-SE](#)  
[HRL-A](#) [DI-2D](#) [AL-2A](#) [DME-2A](#) [C105-222](#) [NP105-A](#) [8002008](#) [C245-010](#) [0008752](#) [C245-748](#)