

为您的产品保驾护航

PRODUCT DATASHEET

Electro-Static Discharge

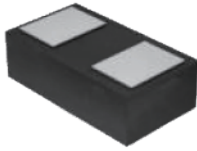
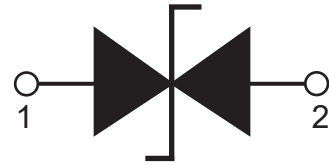
JEN1006-3.3V-C ESD

Features

- Ultra small package: 1.0x0.6x0.37mm(DFN1006)
- Capacitance: 10pF(typ.)
- Reverse Working Voltage: 3.3V
- IEC 61000-4-2 (ESD Air): ±30KV
- IEC 61000-4-2 (ESD Contact): ±30KV
- IEC 61000-4-5 (Lightning 8/20μs): 8.5A

Applications

- Cellular phones
- Portable devices
- Digital cameras
- Power supplies

Pin Description

Schematic Diagram

Limiting Values(T_A = 25 °C, unless otherwise specified)

| Symbol | Parameter | Conditions | Min | Max | Unit |
|------------------|---------------------------------|---------------------------------|-----|-----|------|
| V _{ESD} | Electrostatic Discharge Voltage | IEC 61000-4-2;Contact Discharge | - | ±30 | kV |
| | | IEC 61000-4-2;Air Discharge | - | ±30 | kV |
| P _{PP} | Peak Pulse Power | t _p =8/20μs | - | 72 | W |
| I _{PPM} | Rated Peak Pulse Current | t _p =8/20μs | - | 8.5 | A |
| T _A | Ambient Temperature Range | - | -55 | 125 | °C |
| T _{stg} | Storage Temperature Range | - | -55 | 150 | °C |

Electrical Characteristics(T_A = 25 °C, unless otherwise specified)

| Symbol | Parameter | Conditions | Min | Typ. | Max | Unit |
|------------------|-------------------------|--|-----|------|-----|------|
| V _{RWM} | Reverse Working Voltage | T _A =25°C | - | - | 3.3 | V |
| V _{BR} | Breakdown Voltage | I _R =1mA;T _A =25°C | 5.0 | 5.5 | 6.0 | V |
| I _R | Reverse Leakage Current | V _{RWM} =3.3V;T _A =25°C | - | - | 0.1 | μA |
| V _C | Clamping Voltage | I _{PP} =1A,t _p =8/20μs | - | - | 5 | V |
| | | I _{PP} =8.5A,t _p =8/20μs | - | - | 8.5 | V |
| C _J | Junction Capacitance | V _R =0V,f=1 MHz | - | 10 | - | pF |

Typical Characteristics

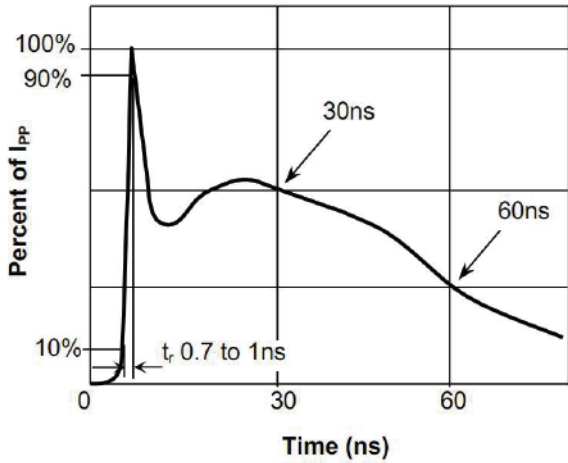


Fig.1 Pulse Waveform-ESD (IEC61000-4-2)

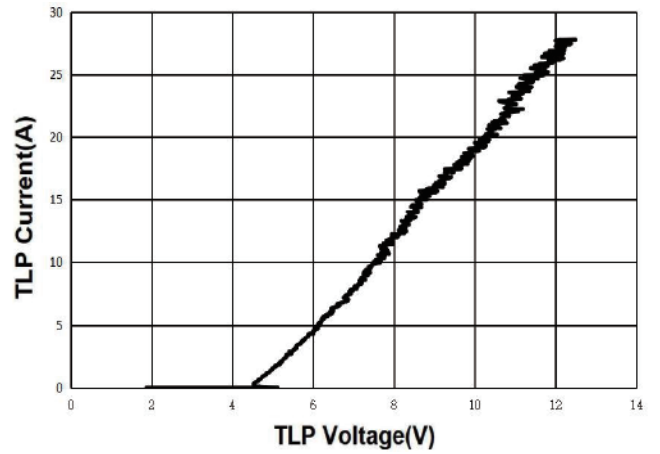


Fig.2 Transmission Line Pulse (TLP)

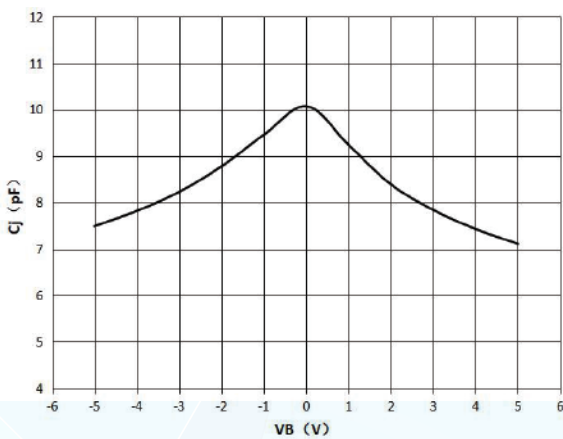


Fig.3 V-I Characteristics for Bidirectional Diode

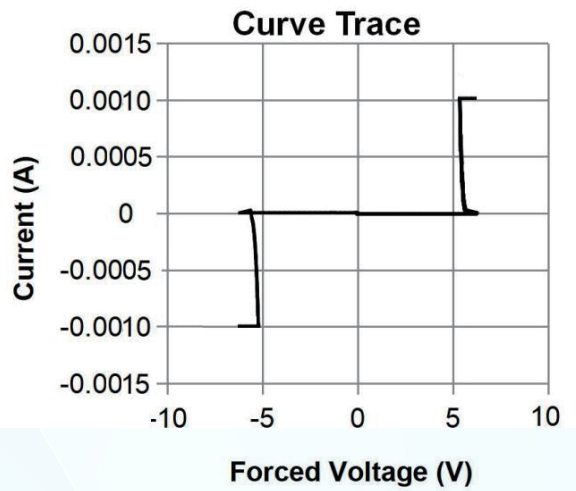
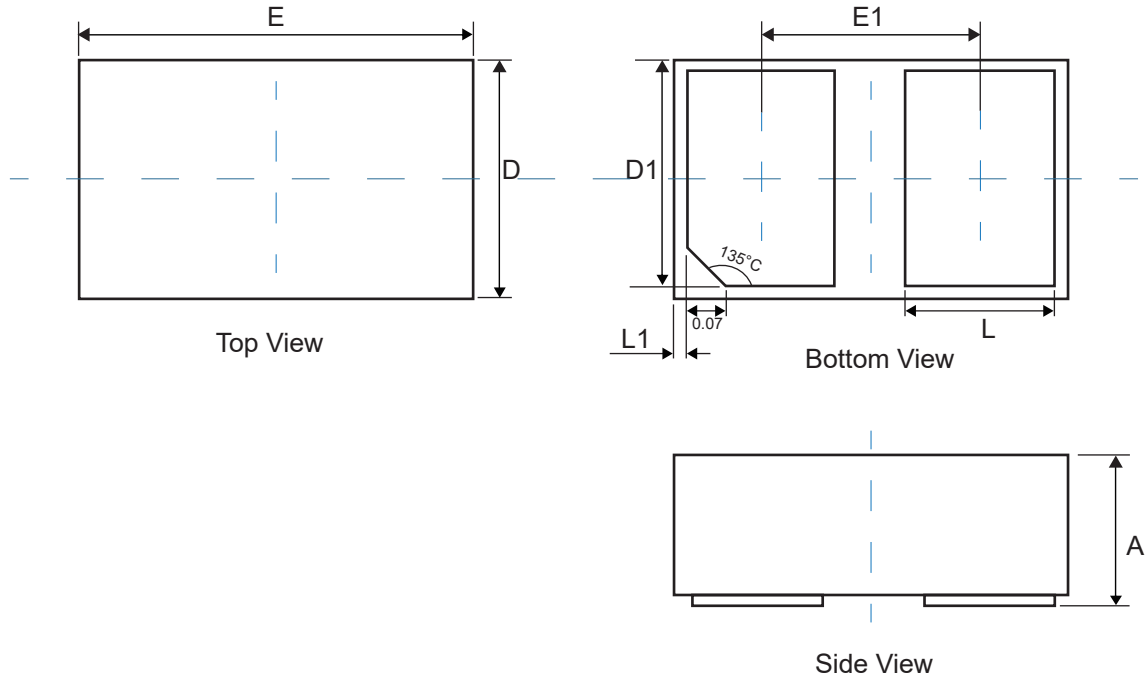


Fig.4 IV Curve

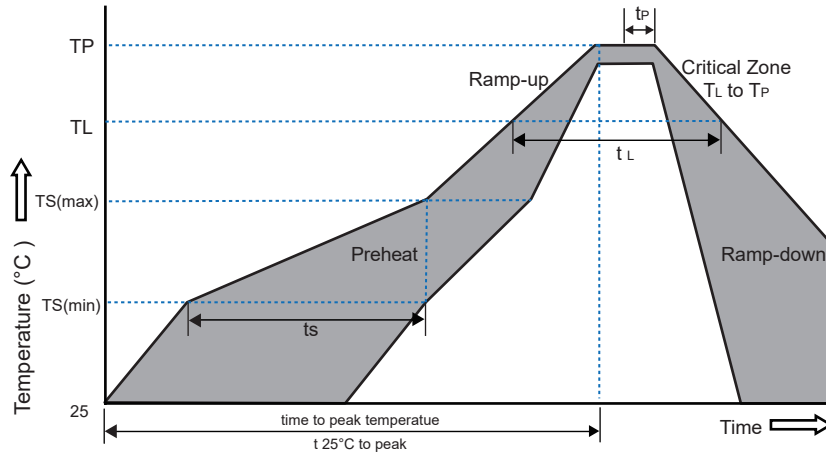
Physical Dimensions(mm.)


| Symbol | Dimensions In Millimeters | | Dimensions In Inches | |
|--------|---------------------------|-------|----------------------|-------|
| | Min. | Max. | Min. | Max. |
| A | 0.350 | 0.450 | 0.014 | 0.018 |
| D | 0.550 | 0.650 | 0.022 | 0.026 |
| E | 0.950 | 1.050 | 0.037 | 0.041 |
| D1 | 0.420 | 0.520 | 0.017 | 0.020 |
| E1 | 0.550 | 0.650 | 0.022 | 0.026 |
| L | 0.270 | 0.370 | 0.011 | 0.015 |
| L1 | 0.000 | 0.100 | 0.000 | 0.004 |

Packaging Quantity

| Part Number | Size(mm) | Delivery Form | Delivery Quantity |
|----------------|----------------|---------------|-------------------|
| JEN1006-3.3V-C | 1.00x0.60x0.37 | 7"T&R | 10,000 |

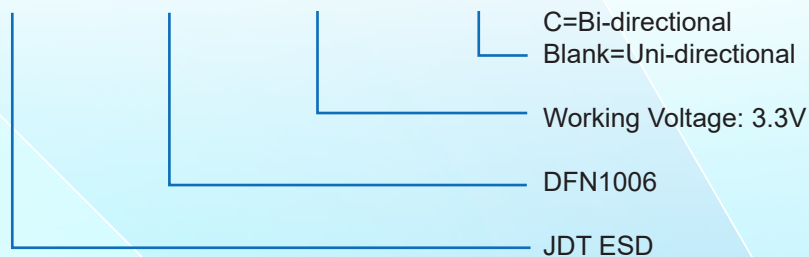
Soldering Parameters



| Reflow Condition | | Pb-Free Assembly |
|--|----------------------------------|------------------|
| Pre-heat | -Temperature Min($T_{s(min)}$) | +150°C |
| | -Temperature Max($T_{s(max)}$) | +200°C |
| | -Time(Min to Max)(t_s) | 60~180 secs. |
| Average ramp up rate (Liquid us Temp(T_L) to peak) | | 3°C/sec. Max |
| Ts(max) to T_L - Ramp-up Rate | | 3°C/sec. Max |
| Reflow | -Temperature(T_L)(Liquid us) | +217°C |
| | -Temperature (t_L) | 60~150 secs. |
| Peak Temp (T_p) | | +260(+0/-5)°C |
| Time within 5°C of actual Peak Temp (t_p) | | 30 secs. Max |
| Ramp-down Rate | | 6°C/sec. Max |
| xTime 25°C to Peak Temp (TP) | | 8 min. Max |
| Do not exceed | | +260°C |

Part Number System

JE N1006 - 3.3V - C



X-ON Electronics

Largest Supplier of Electrical and Electronic Components

Click to view similar products for [ESD Suppressors / TVS Diodes](#) category:

Click to view products by [JDT](#) manufacturer:

Other Similar products are found below :

[60KS200C](#) [D18V0L1B2LP-7B](#) [D5V0F4U5P5-7](#) [NTE4902](#) [P4KE27CA](#) [P6KE11CA](#) [P6KE39CA-TP](#) [P6KE8.2A](#) [JANTX1N6053A](#)
[SA110CA](#) [SA60CA](#) [SA64CA](#) [SMBJ12CATR](#) [SMBJ33CATR](#) [SMBJ8.0A](#) [ESD101-B1-02ELS E6327](#) [ESD105-B1-02EL E6327](#) [ESD112-B1-02EL E6327](#) [ESD119B1W01005E6327XTSA1](#) [ESD5V0L1B02VH6327XTSA1](#) [ESD7451N2T5G](#) [19180-510](#) [CPDT-5V0USP-HF](#)
[3.0SMCJ33CA-F](#) [3.0SMCJ36A-F](#) [HSPC16701B02TP](#) [JANTX1N6126A](#) [JANTX1N6462](#) [JANTX1N6465](#) [USB50805e3/TR7](#)
[D3V3Q1B2DLP3-7](#) [D55V0M1B2WS-7](#) [DRTR5V0U4SL-7](#) [SCM1293A-04SO](#) [ESD200-B1-CSP0201 E6327](#) [SM12-7](#) [SM1605E3/TR13](#)
[SMLJ45CA-TP](#) [CEN955 W/DATA](#) [82350120560](#) [VESD12A1A-HD1-GS08](#) [CPDUR5V0R-HF](#) [CPDQC5V0U-HF](#) [CPDQC5V0USP-HF](#)
[CPDQC5V0-HF](#) [D1213A-01LP4-7B](#) [ESD101-B1-02EL E6327](#) [824500181](#) [MMAD1108/TR13](#) [5KP100A](#)