

承 认 书

SPECIFICATION FOR APPROVAL

客户名称 Customer : _____

货 名 Description : _____ 表面声波谐振器 (SAW Resonator) _____

客户料号 Part No: _____

物料编号 Code No: _____ B21D339210A010CT _____

频 率 Frequency: _____ 433.920MHZ _____

日 期 Date: _____ 2022-11-02 _____

备 注 Note: _____ RoHS compliance with Directive (EU) 2015/863 _____

制作(Prepare by)	检查(Check by)	批准 (Approve by)
江丹娜	甘瑛	邓攀

客户批准 Approve by customer	
批准日期 Approval date	

Add:广东省深圳市华发北路桑达工业区桑达雅苑 7P

7 P Sangda Yayuan Huafa North Road, Futian District, Shenzhen, Guangdong

Tel: 86-755-83048260 86-755-83048290

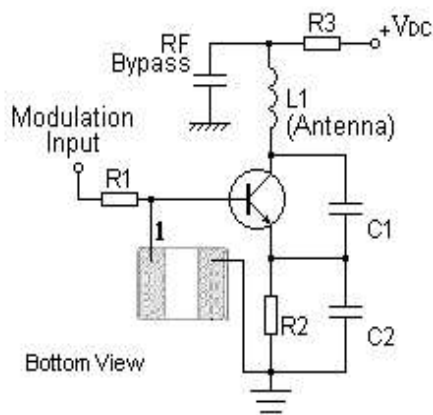
Fax: 86-755-83048280

Features

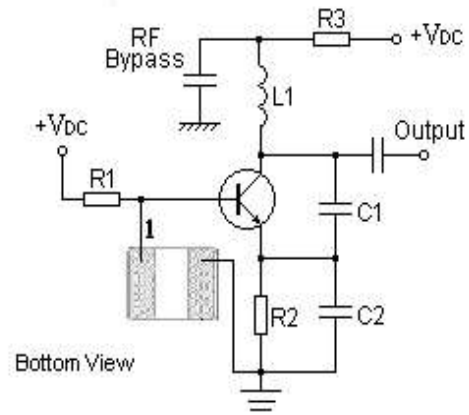
- 1-port Resonator
- CSP Package for **Surface Mounted Technology (SMT)**
- **RoHS** compatible
- Package size 2.00x1.60x0.90mm³
- **Electrostatic Sensitive Device(ESD)**

Application

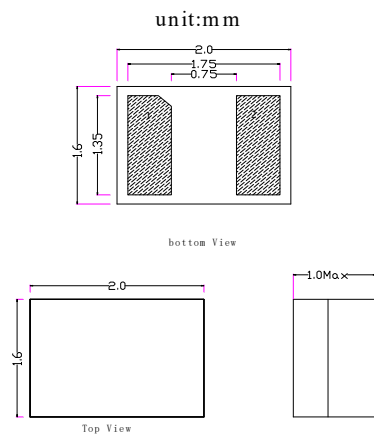
Typical Low-Power Transmitter Application



Typical Local Oscillator Application



Package Dimensions



Pin Configuration

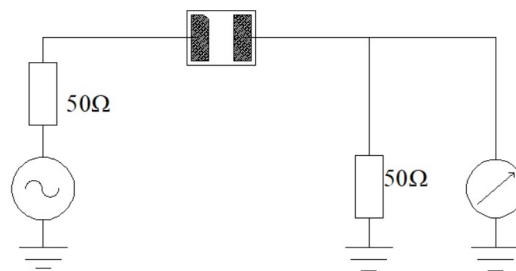
1	Input/ Output
2	Output/ Input

Part No.	:	R434
Pages	:	5
Date	:	2020/05/28
Revision	:	1.0

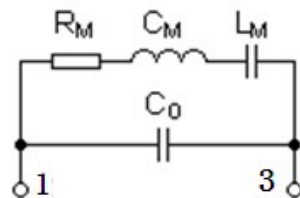
Marking



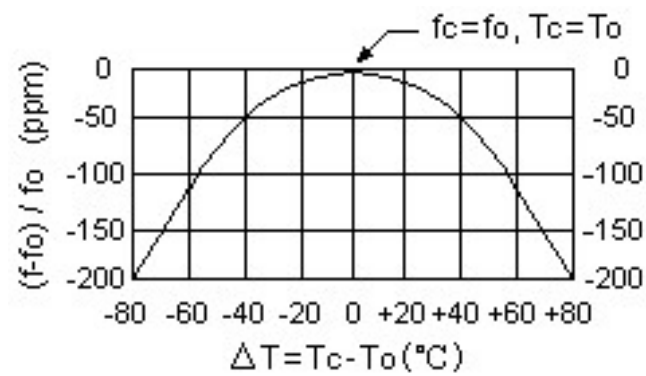
Test Circuit



Equivalent LC Model



Temperature Characteristics



The curve shown above accounts for resonator contribution only and does not include LC component temperature contributions.

Performance**Maximum Rating**

Item		Value	Unit
DC Voltage	V_{DC}	10	V
Operation Temperature	T	-40 ~ +85	°C
Storage Temperature	T_{stg}	-55 ~ +125	°C
RF Power Dissipation	P	10	dBm

Electronic Characteristics

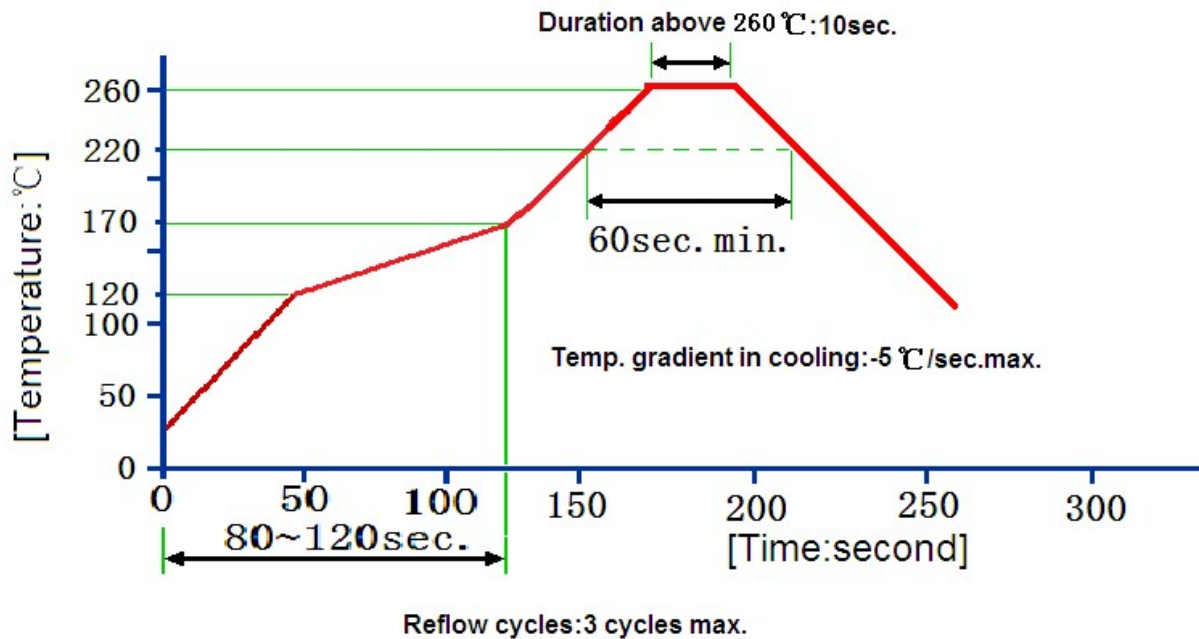
Test Temperature: $25^{\circ}\text{C} \pm 2^{\circ}\text{C}$

Terminating source impedance: 50Ω

Terminating load impedance: 50Ω

Item			Minimum	Typical	Maximum	Unit
Center Frequency	Absolute Frequency	f_c	433.820	433.920	434.020	MHz
	Tolerance from 433.920MHz	Δf_c	Fc-100		Fc+100	KHz
Insertion Loss(min)		IL		1.3	2.2	dB
Quality Factor	Unloaded Q	Q_U		12000		
	50Ω Loaded Q	Q_L		1500		
Temperature Stability	Turnover Temperature	T_0	10	25	40	°C
	Turnover Frequency	f_0		f_c		
	Frequency Temperature Coefficient	FTC		0.032		ppm/°C
Frequency Aging	Absolute Value during the First Year	$ f_A $		≤ 10		ppm/yr
DC Insulation Resistance between Any Two Pins			1.0			MΩ
RF Equivalent RLC Model	Motional Resistance	R_M		12.196		Ω
	Motional Inductance	L_M		183.82		μH
	Motional Capacitance	C_M		0.733		fF
	Static Capacitance	C_0		2.23		pF

Recommended Reflow Soldering Diagram



Notes

1. As a result of the particularity of inner structure of SAW products, it is easy to be breakdown by electrostatic, so we should pay attention to **ESD protect** in the test.
2. **Static voltage** between signal load and ground may cause deterioration and destruction of the component. Please avoid static voltage.
3. **Ultrasonic cleaning** may cause deterioration and destruction of the component. Please avoid ultrasonic cleaning.
4. Only leads of component may **be soldered**. Please avoid soldering another part of component.
5. There is a close relationship between the device's performance and **matching network**. The specifications of this device are based on the test circuit shown above. L and C values may change depending on board layout. Values shown are intended as a guide only.
6. The temperature of manual welding should not exceed 300 °C.

X-ON Electronics

Largest Supplier of Electrical and Electronic Components

Click to view similar products for [SAW Oscillators](#) category:

Click to view products by [JGHC](#) manufacturer:

Other Similar products are found below :

[XG-2102CA 100.0000M-LGPAL3](#) [XG-2102CA 156.2500M-LGPAL3](#) [CCSO-914XL-500.000](#) [XG-2102CA 125.0000M-PHPA](#) [SK3530H](#)
[B21D339210A010CT](#) [EG-2121CA 100.0000M-LHPAB](#) [EG-2121CA 125.0000M-LGPNB](#) [EG-2121CA 125.0000M-LHPAB](#) [EG-2121CA](#)
[125.0000M-PHPAL3](#) [CVCSO-914-1000](#) [CCSO-914X-1000](#) [S1614E-25.0000\(T\)](#) [EG-2121CA 100.0000M-LGPAL3](#) [EG-2121CA 125.0000M-](#)
[LGRNLX](#) [EG-2121CA 125.0000M-LHPAL3](#) [EG-2121CA 200.0000M-LHPAB](#) [EG-2121CA 200.0000M-LHPAL3](#) [EG-2121CA 200.0000M-](#)
[PHPAL3](#) [EG-2121CA 212.5000M-PHPAB](#) [EG-2121CA 312.5000M-LGPAB](#) [EG-2121CA 200.0000M-LGPAB](#) [XG-2102CA 312.5000M-](#)
[LGRN](#) [XG-2102CA 200.0000M-LHPA](#) [VS-705-ECE-KAAN-155M520000](#) [VS-705-ECE-KAAN-983M040000](#) [VS-705-ECE-SAAN-](#)
[125M000000](#)