

SMD TCXO 2.5 x 2.0 x 0.95 mm(6PAD)



Features

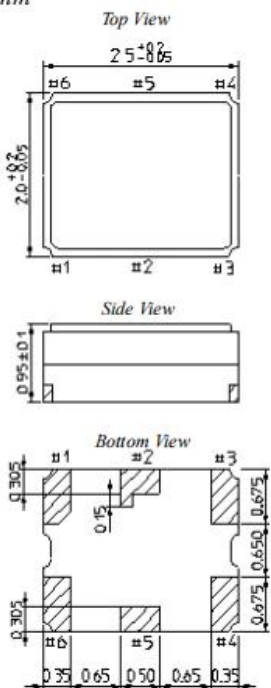
- External dimensions: 2.5 x 2.0 x 0.95mm;
- Frequency range: 16.367667 MHz, 16.368 MHz, 16.369 MHz, 19.2 MHz, 26 MHz, 33.6 MHz, 38.4 MHz, 40 MHz, 52 MHz
- Temperature Stability: ± 0.5 ppm ~ ± 2.0 ppm;
- Supply Voltage: 1.8 V ~ 3.3 V;
- Voltage Control Function Available
- Applications : GPS, WiMAX, Cellular and Wireless Communications.
- Tri-state function available;
- RoHS Compliant / Pb Free.

Electrical Specifications

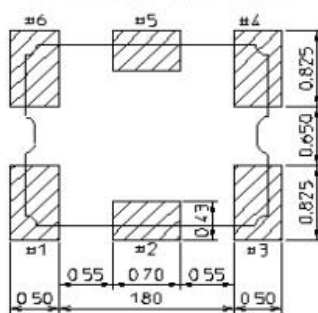
Frequency Range	13 ~ 52 MHz
Output Type	10K Ω // 10 pF
Oscillation Mode	Fundamental
Supply Voltage	1.8 ~ 3.3 V
Frequency Tolerance	± 2.5 ppm Max.
Temperature range	- 30 ~ + 85 $^{\circ}$ C
Supply Voltage	± 0.2 ppm Max.
Load sensitivity	± 0.2 ppm Max.
Clipped Sinewave Output Voltage	0.8 Vp-p typical
Start-up Time	5 ms Max
Current	2.0 mA Max.
Aging (at 25 $^{\circ}$ C)	± 1 ppm / year Max.

Dimensions

Unit: mm

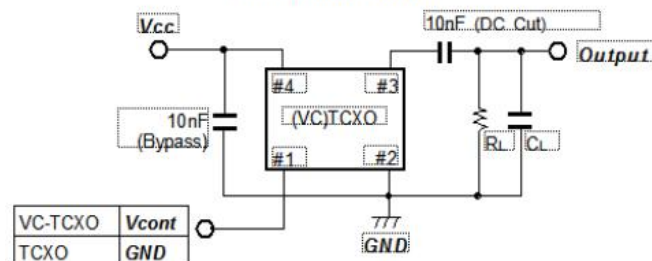


Recommended Land Pattern



Pad No.	Connection	
	VC-TCXO	TCXO
#1	V _{cont}	GND
#3	GND	GND
#4	Output	Output
#6	V _{cc}	V _{cc}
#2, #5	N.C.	N.C.

Measurement Circuit



Note:

Please connect a bypass capacitor closely to V_{cc} Pad.

Load capacitance (C_L) includes probe and test board capacitance.

X-ON Electronics

Largest Supplier of Electrical and Electronic Components

Click to view similar products for [Standard Clock Oscillators](#) category:

Click to view products by [JGHC](#) manufacturer:

Other Similar products are found below :

[EP1400SJTSC-125.000M](#) [601137](#) [601252](#) [CSX750FBC-24.000M-UT](#) [CSX750FBC-33.333M-UT](#) [CSX750FCC-3.6864M-UT](#) [F335-12](#) [F335-25](#) [F535L-50](#) [DSC506-03FM2](#) [ASA-20.000MHZ-L-T](#) [ASA-25.000MHZ-L-T](#) [ASA-27.000MHZ-L-T](#) [ASV-20.000MHZ-LR-T](#) [ECS-2018-160-BN-TR](#) [EL13C7-H2F-125.00M](#) [MXO45HS-2C-66.6666MHZ](#) [NBXDBB017LN1TAG](#) [NBXHBA019LN1TAG](#) [SiT1602BI-22-33E-50.000000E](#) [SIT8003AC-11-33S-2.04800X](#) [SiT8256AC-23-33E-156.250000X](#) [SIT8918AA-11-33S-50.000000G](#) [SM4420TEV-40.0M-T1K](#) [SMA4306-TL-H](#) [F335-24](#) [F335-40](#) [F335-50](#) [F535L-10](#) [F535L-12](#) [F535L-16](#) [F535L-24](#) [F535L-27](#) [F535L-48](#) [CSX750FBC-20.000M-UT](#) [CSX-750FBC33333000T](#) [CSX750FBC-4.000M-UT](#) [CSX750FBC-7.3728M-UT](#) [CSX750FBC-8.000M-UT](#) [CSX-750FCC14745600T](#) [CSX750FCC-16.000M-UT](#) [CSX-750FCC40000000T](#) [CSX750FCC-4.000M-UT](#) [ASA-22.000MHZ-L-T](#) [ASA2-26.000MHZ-L-T](#) [ASA-40.000MHZ-L-T](#) [ASA-48.000MHZ-L-T](#) [ASA-60.000MHZ-L-T](#) [ASF1-3.686MHZ-N-K-S](#) [XLH735025.000JU4I8](#)