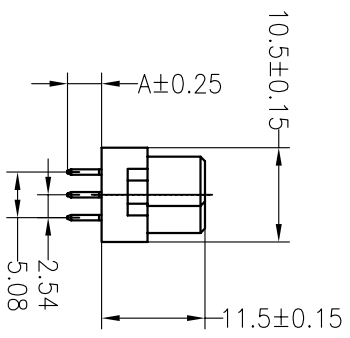
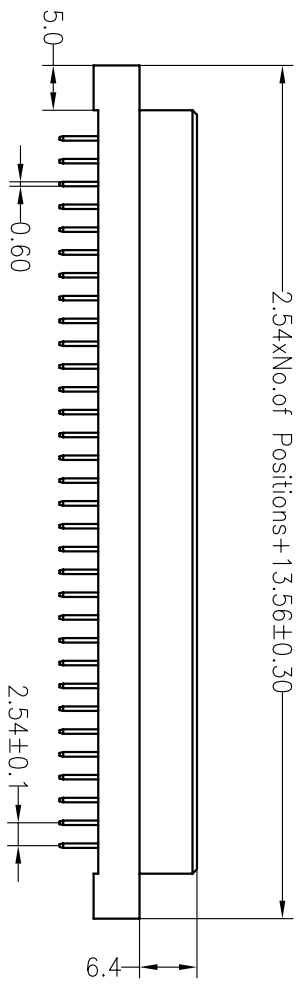
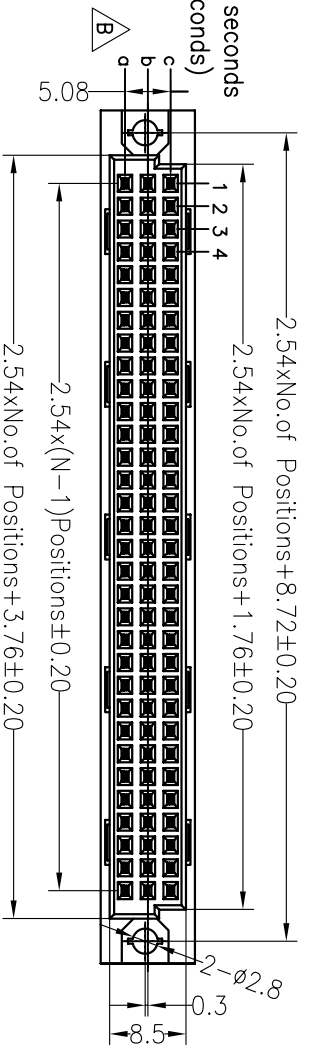
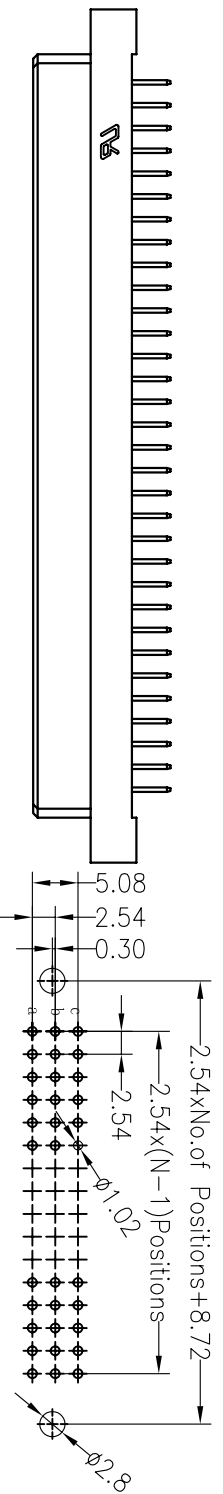


**SPECIFICATIONS**

Rated Current: 3.0AMP  
 Contact Resistance: 30mΩ Max  
 Withstand Voltage: 1000V AC/DC  
 Insulation Resistance: 1000MΩ Min  
 Operation Temperature: -40°C to +105°C

Contact Material: Brass  
 Contact Plating: Au or Sn Over Ni  
 Insulator Material: Polyester (UL94V-0)  
 Standard: PBT  
 Max. Processing Temp: 180°C for 30-60 seconds (200°C for 10 seconds)



**Ordering Information**

35113 XX A F S XX BNA1

No. of Pins 320~396  
 Contact Type F=Female  
 Contact Plating  
 G0:Gold Flash  
 S0:Gold Flash/Tin  
 S1:2U" Gold/Tin  
 S2:5U" Gold/Tin  
 S3:10U" Gold/Tin  
 S4:15U" Gold/Tin  
 S5:30U" Gold/Tin  
 SN:Tin

Dimension antitheses list

ITEM	A
Standard	4.00
Alternate	

OPERATION	X.X	±0.30	DRAW	YTYuSheng	16.07.05	SCALE	FIT	PART NO.	TITLE:
	X.XX	±0.20		CHECK			UNIT		
X.XXX	±0.10	CHECK	APPROVE	SHEET	1/1	PROJ.	A4	DIN 41612 3xNpin 180° Female	
	Angle								±3°
MODIFICATION DESCRIPTION	CHANGE	DIM	TOL	APPROVE					
REV	DATE	MODIFICATION DESCRIPTION							
1									
2									
3									
4									
5									
6									
7									
8									
9									

**JILIN** 深圳市锦凌电子有限公司  
 SHENZHEN JINLING ELECTRONIC CO.,LTD  
 Tel: 86-755-2997-5806/5802 Fax: 86-755-2997-5992

Recommended P.C.B Layout(Top Side)  
 (PCB BOARD TOLERANCE±0.05)

## X-ON Electronics

Largest Supplier of Electrical and Electronic Components

*Click to view similar products for [Board to Board & Mezzanine Connectors](#) category:*

*Click to view products by [JILN](#) manufacturer:*

Other Similar products are found below :

[589158040000018](#) [MDF7C-18P-2.54DSA\(55\)](#) [FCN-268F036-G/BD](#) [FCN-268M012-G/0D](#) [FCN-268M024-G/1D](#) [MIS-048-01-F-D-DP-K](#)  
[832-10-034-10-001000](#) [FX4C-80S-1.27DSA](#) [93696-330](#) [224393](#) [FCN-235D050-G/C](#) [210-93-314-41-105000](#) [MDF7-40DP-2.54DSA\(55\)](#)  
[MIT-114-03-F-D-K](#) [55323-1519](#) [026-6203-PDB](#) [027-6203-PDB](#) [069159702701000](#) [101A10019X](#) [105061100000861+](#) [55650-0588-C](#) [75140-](#)  
[7012](#) [87471-650](#) [YTW-30-07-H-Q-410-140](#) [YTT-112-01-H-Q](#) [063209](#) [10124054-515LF](#) [68685-603](#) [8-1616154-3](#) [MIS-019-01-F-D](#) [YTQ-](#)  
[12103HQ](#) [541371078](#) [IL-WX-10PB-HF-B-E1000E](#) [FCN-214J100-G/0](#) [FCN-230C068-E/S](#) [354184](#) [MIT-019-04-F-D-K](#) [P50-028-DDS-TG](#)  
[53309-2471](#) [54546-2071](#) [1586617-1](#) [504208-3010](#) [504208-5010](#) [504248-1010](#) [504248-1210](#) [504248-2010](#) [LST-115-07-S-D](#) [LST-105-07-G-](#)  
[D](#) [9159005551906](#) [NDS100-004-BF](#)