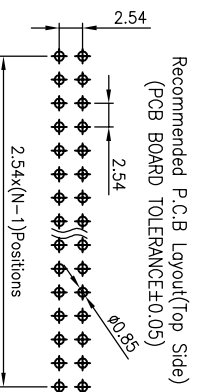
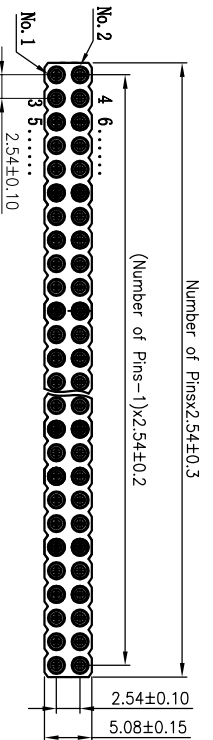
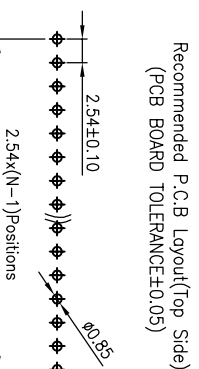
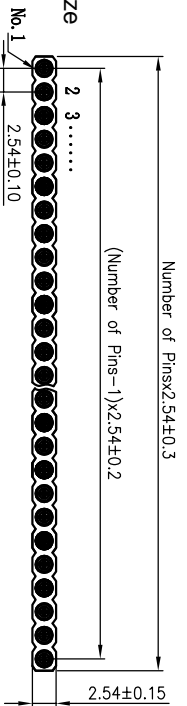




### Technical Specs:

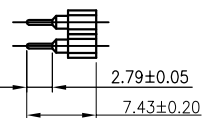
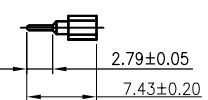
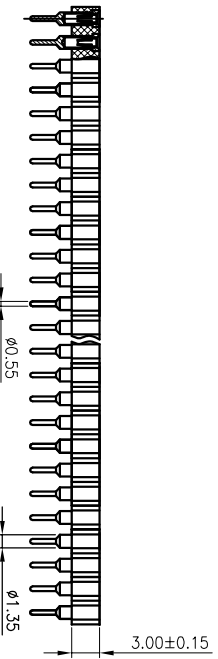
**Insulator:** Black glass filled polyester PPS-GF30-FR  
**Flammability:** UL 94V-O  
**Sleeve:** Brass  
**Contact clip(4/6 finger):** Beryllium copper(C17200)/Phosphor Bronze  
**Accepted pin:** Ø0.40 to 0.56mm  
**Forces:** 2 N typ  
 --Insertion 2 N typ  
 --Withdrawal 1 N typ  
**Mechanical life:** min500 cycles  
**Rated current:** 3A  
**Contact resistance:** max 10mΩ  
**Dielectric resistance:** Min 1000V RMS  
**Max.Processing Temp:**230°C for 30-60 seconds  
 (260°C for 10 seconds)



## Ordering Information

3620 30 X XX S XX 074 01

**Insulator Type**  
 Code  
 1:Single row  
 2:Double row  
**No.of Pins**  
 1-40Pin  
**Contact Plating**  
 G0:Gold Flash  
 S0:Gold  
 S4:5u"Gold/Tin  
 S5:10u"Gold/Tin  
 S6:30u"Gold/Tin  
**Length**  
 074=7.43mm



OPERATION		DRAW		JINCHENGXIN 17.08.05		SCALE		FIT		PART NO.	
X.X	±0.30					UNIT	mm				
X.XX	±0.20	CHECK				SIZE	A4				362030XXXXSX07401
X.XXX	±0.10	APPROVE				SHEET	1/1			TITLE:	2.54X3.0圓孔母座 180° L=7.43
Angle	±3°					PROJ.					
REV	DATE	MODIFICATION DESCRIPTION		CHANGE							
A0	2017.08.05	NEW DRAWING									
1											

**深圳市锦凌电子有限公司**  
**JILIN SHENZHEN JINLING ELECTRONIC CO.,LTD**  
 Tel: 86-755-2997-5806/5802 Fax: 86-755-2997-5992

## X-ON Electronics

Largest Supplier of Electrical and Electronic Components

*Click to view similar products for [Headers & Wire Housings](#) category:*

*Click to view products by [JILN](#) manufacturer:*

Other Similar products are found below :

[95000-104TRLF](#) [10135584-644402LF](#) [DF62W-EP2022PCA](#) [95000-106TRLF](#) [DF62W-2022SCA](#) [DF62W-EP2022PC](#) [2203348](#) [DF62W-2022SC](#) [1084018](#) [1029039](#) [1084017](#) [802-10-012-10-002000](#) [1112640](#) [1112639](#) [891-007-9SS-BST1T](#) [000-34000](#) [0008550134](#) [0009482033](#) [0009507031](#) [57102-F02-18ULF](#) [57102-S06-03LF](#) [57202-S52-04LF](#) [PCN6-15S-2.5E](#) [0039019024](#) [58102-G61-06LF](#) [582553-1](#) [0009485154](#) [0009508121](#) [0022285053](#) [0050291907](#) [018731A](#) [LY20-4P-DT1-P1E-BR](#) [02.125.8002.8](#) [60101931](#) [60598-1 \(Cut Strip\)](#) [M1625-3R/100](#) [61062-3](#) [61082-181009](#) [CSU011177004](#) [636-1427](#) [638009-1](#) [641938-9](#) [641991-4](#) [644168-1](#) [644827-2](#) [647662-1](#) [65039-019ELF](#) [65692-001LF](#) [65781-018](#) [65781-047](#)