

NOTES1:

UL Standard

1. Rated voltage/current : 300V / 20A
3. Torque value : M2.5 , 3.5Lb.in
4. Wire range : 30~12AWG

IEC Standard

1. Rated voltage/current : 250V / 24A
2. Torque value : M2.5 , 0.4N.m
3. Wire range : 0.5~2.5mm<sup>2</sup>

NOTES2:

1. Dimension shall be interpreted per ASME Y14.5-2009
2. Pitch : 5.00mm, Poles : N=01~24P
3. Stripping length : 12~13mm
4. Withstanding voltage : AC2000V/1Min
5. Operating temperature : -40°C~+105°C
6. Undimensioned tolerances:

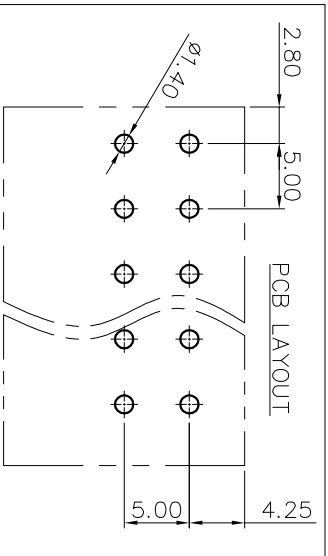
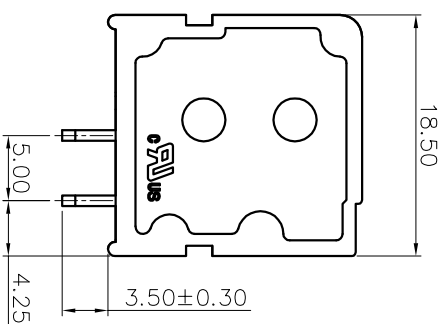
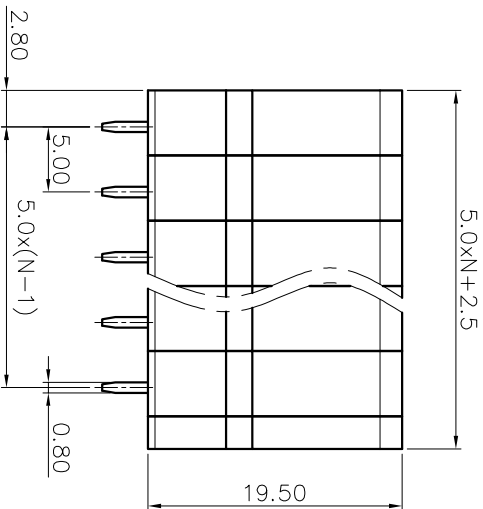
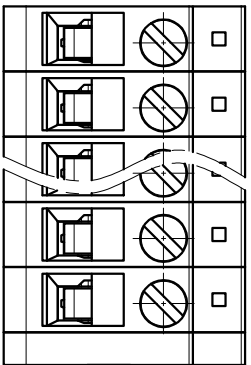
Pitch range in mm	Nominal dimension range in mm		Tolerance
	Over	Under	
6 TO 10	10 TO 30	60 TO 100	0.1/10
10 TO 24	30 TO 60	100 TO 150	<
	±0.15/±0.20	±0.30/±0.50	±1.00/±1.30

7. RoHS Compliance

# Ordering Information

JL105V-500 XX G 0 1

- Pitch 500=5.0PH
- No. of pins 2P~24P
- Housing Color B=Black G=Green U=Blue R=Red W=White Y=Yellow D=Orange E=Grey
- Packaging 0=Pe bag T=Tube A=Tray



REVISION RECORD				
REV	ECN	DESCRIPTION	DRFT	DATE
A0		NEW		21.08.16

DRAW	SHUANGPING ZHENG		SCALE	FIT	PART NO.	TITLE:
	UNIT	mm	A4	1/1		
CHECK	LICHAD LIU		SIZE	A4	JL105V-500XXG01	JL105V-5.0-XXP 螺钉式直脚绿色
APPROVE	YONGLIANG GAO		SHEET	1/1		
			PRDJ			

**JILIN** 东莞市锦凌电子有限公司  
DONGGUAN JINLING ELECTRONIC CO., LTD

PART NO. JL105V-500XXG01

TITLE: JL105V-5.0-XXP 螺钉式直脚绿色

## **X-ON Electronics**

Largest Supplier of Electrical and Electronic Components

*Click to view similar products for [Fixed Terminal Blocks](#) category:*

*Click to view products by [JILN](#) manufacturer:*

Other Similar products are found below :

[MBE-1512](#) [MBE-1520](#) [MBE-154](#) [MBE-156](#) [MBES-156](#) [MH-2512](#) [MHE-132](#) [MHE-163](#) [MI-254 \(35\)](#) [MI-272](#) [MPT-275](#) [ELM10110G](#)  
[BA311TU](#) [BA411SU](#) [MV-253/NCNOC](#) [MV-254-D](#) [MV-255](#) [MV-493](#) [MVE-252](#) [MVE-253](#) [MVE-273](#) [MVEB-153](#) [1700096](#) [1705142](#)  
[1712417](#) [1713088](#) [1745195](#) [1760594](#) [1-796689-8](#) [1-796692-6](#) [1800114](#) [20020314-C121B01LF](#) [20020316-G041B01LF](#) [KP03215000J0G](#)  
[KP04215000J0G](#) [S451](#) [29.007](#) [29.116](#) [30.103](#) [30.106](#) [30.503](#) [30.608](#) [30.755](#) [30.756](#) [30.853](#) [9872-0-00-15-00-00-33-0](#) [996750](#) [1706303](#)  
[1710052](#) [1712418](#)